

UCLA ANDERSON FORECAST DATA RELEASE
SEASONALLY ADJUSTED REGIONAL JOB DATA FOR CALIFORNIA
June 2005 Job Data released 7-22-05

Headline economic data announced for the U.S. economy are invariably published in seasonally adjusted form, and most of the statewide data are so adjusted as well. California is a very large economy, with many highly diverse regional economies. Unfortunately the regional data are not seasonally adjusted by state agencies. As a result, the local data are not amenable to analysis of recent short-run trends in the local economies, since in the absence of seasonal adjustment, analysts typically look at job levels and growth rates compared to those of a year earlier, in order to abstract from seasonal influences. This practice provides a relevant perspective on how regional economic growth has developed over the past year, but it says little or nothing about how regional growth has progressed in recent months.

To address these deficiencies in the local data, the UCLA Anderson Forecast will publish seasonally adjusted versions of employment data for the ten major metropolitan economies within California. On the 2nd Friday of each month, when the unadjusted regional data are released by EDD, our economists will compile seasonally adjusted versions of the major components of payroll employment, aggregate employment within both the household and payroll surveys, and unemployment rates. Soon after the EDD data release we will publish a summary table of our seasonally adjusted employment data for each of the covered metropolitan regions, along with summary charts.

The ten economic regions covered at this time will be Los Angeles County, Orange County, San Diego County, the Riverside-San Bernardino (Inland Empire) economic region, Ventura County, Santa Clara County (San Jose MSA), the San Francisco-San Mateo-Marín metro region (San Francisco MSA), the Alameda-Contra Costa (Oakland MSA) region, the Sacramento-Placer-El Dorado area (Sacramento MSA) and Fresno-Madera region (Fresno MSA).

Any or all of these summary tables can be obtained through the Media Relations Office at the UCLA Anderson School of Management (call Hilary Rehder, 310-206-7707). For our economists' commentary on the data, please refer to the following contact list. If you are unable to reach one of economists please contact Hilary Rehder. For general information about the UCLA Anderson Forecast please call 310-825-1623.

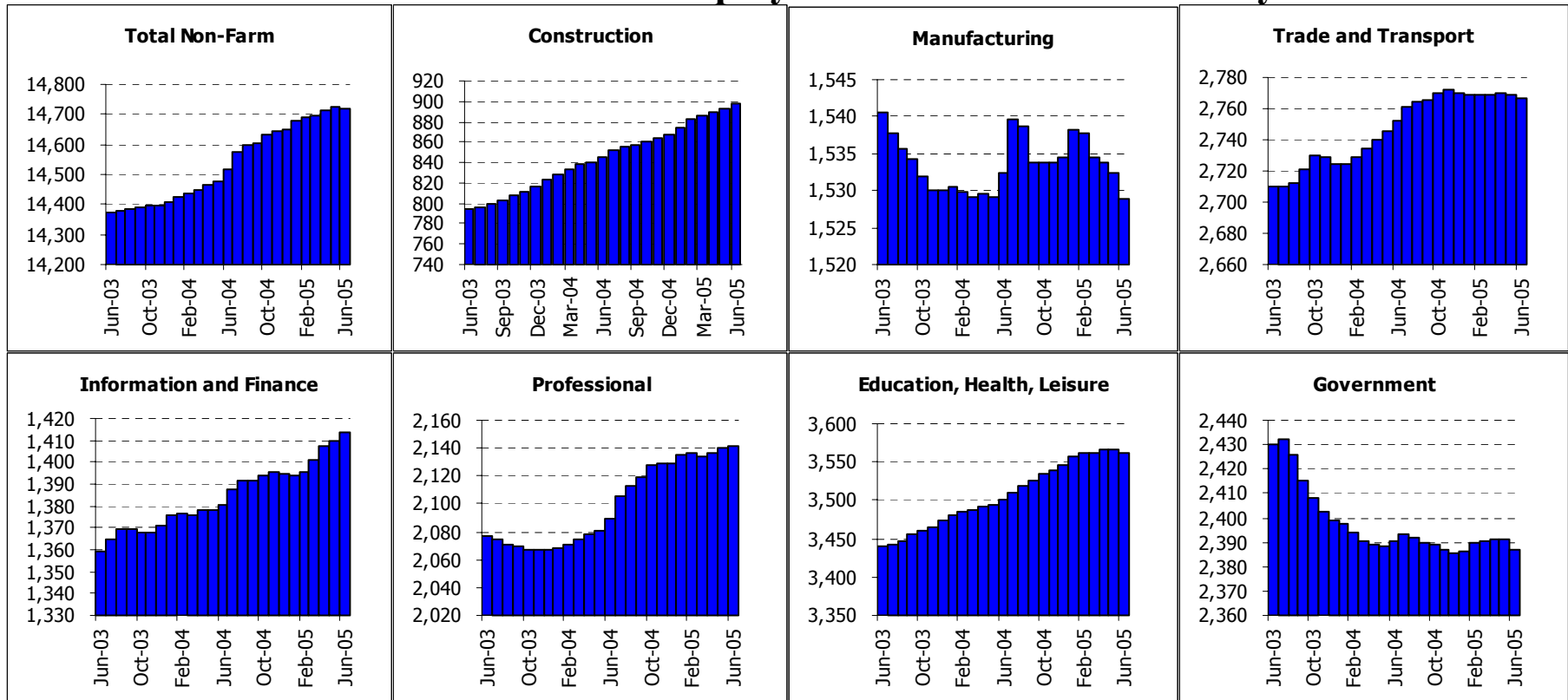
Economist	Contact	Economist	Contact
Christopher Thornberg	310-794-6382 UCLA 310-739-3286 OFFICE	Michael Bazdarich	310-206-1132 UCLA 818-249-3450 OFFICE

California Overview

Payroll Employment

	Current	Monthly Change							
	Level	May-05	Apr-05	Quarterly Change		Year-to-date 2005		Year-to-date 2004	
	Jun-05	Jun-05	May-05	Abs.	% AR	Abs.	% AR	Abs.	% AR
California	14720.1	-4.4	8.2	21.4	0.6%	71.4	1.0%	108.9	1.5%
Los Angeles	4025.1	5.9	5.7	19.3	1.9%	32.2	1.6%	12.7	0.6%
Orange County	1478.8	0.4	0.9	3.5	1.0%	8.5	1.2%	19.3	2.7%
Riverside	1168.5	0.9	0.1	1.2	0.4%	5.5	0.9%	26.0	4.7%
San Diego	1273.7	0.7	0.8	2.7	0.9%	8.8	1.4%	11.9	1.9%
Ventura	285.6	-1.2	-0.3	-1.7	-2.3%	1.0	0.7%	0.4	0.3%
Santa Barbara	172.1	0.7	0.6	1.7	4.1%	3.2	3.8%	1.1	1.3%
Bakersfield	215.1	0.2	0.5	1.4	2.6%	2.4	2.3%	3.8	3.7%
East Bay	1029.8	0.6	1.5	4.2	1.6%	5.7	1.1%	3.6	0.7%
San Francisco	942.8	-1.4	-0.1	-0.6	-0.3%	1.9	0.4%	-1.1	-0.2%
San Jose	857.7	1.3	1.3	4.3	2.0%	1.4	0.3%	-1.7	-0.4%
Sacramento	867.2	1.2	0.5	1.5	0.7%	4.5	1.0%	3.8	0.9%
Santa Rosa	185.9	0.3	0.1	0.5	1.1%	0.7	0.8%	0.2	0.2%
Fresno	291.0	0.4	0.0	0.5	0.7%	3.1	2.2%	1.2	0.8%

State of California: Employment Charts and Summary



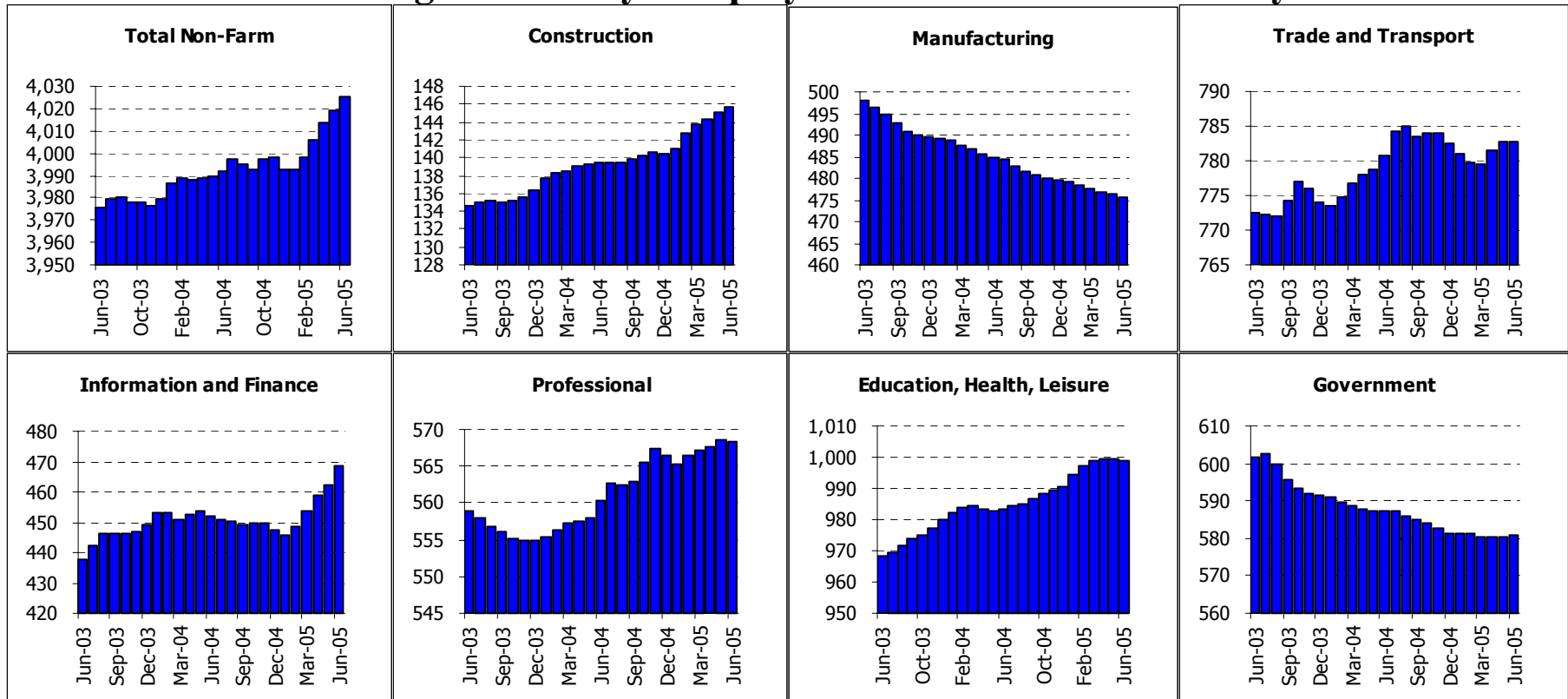
Summary: California lost 4,400 jobs in June from May. This number differs substantially from the EDD estimate of a gain of 15,000 jobs. We use a different algorithm for the seasonal adjustment process, hence the differences in the figures. We currently see a 20,000 job gain for the last three months, a .6% annualized growth rate, as opposed to the 50,000, 1.5% growth rate in the official EDD numbers. The weaknesses we see are across the board—our employment growth figures are lower in every sector except Information and the Public Sector. We see the government sector as slightly stronger than the EDD, with a recorded loss of 3,800 jobs compared to the 6,000 jobs in the official EDD numbers. Overall Construction, Information and Professional Services jobs remain the largest drivers of new jobs in the state. Manufacturing and Transportation remains the weakest sectors of the economy. However better news comes from the Household side of the equation, where we see unemployment falling to 5.2% with a large surge in household employment.

State of California: Employment Tables (thousands)

	Current	Monthly Change		Quarterly Change		Year-to-date 2005		Year-to-date 2004	
	Level	May-05	Apr-05						
Payroll Statistics	Jun-05	Jun-05	May-05	Abs.	% AR	Abs.	% AR	Abs.	% AR
Total Non-Farm	14720.1	-4.4	8.2	21.4	0.6%	71.4	1.0%	108.9	1.5%
Total Private	12332.9	-0.5	7.9	24.7	0.8%	69.4	1.1%	117.4	2.0%
Construction	897.7	4.9	3.3	10.9	5.0%	30.6	7.2%	28.7	7.1%
Durable Manufacturing	978.6	-2.1	0.0	-1.8	-0.7%	-1.4	-0.3%	3.2	0.7%
Non-Durable Manufacturing	550.3	-1.2	-1.4	-3.8	-2.7%	-4.3	-1.5%	-0.9	-0.3%
Wholesale Trade	658.7	-0.5	-0.2	-0.4	-0.2%	0.9	0.3%	5.7	1.8%
Retail Trade	1624.1	0.0	-0.1	0.6	0.1%	-0.9	-0.1%	19.9	2.5%
Transportation and Utilities	484.2	-1.6	-1.0	-2.6	-2.1%	-2.5	-1.0%	2.7	1.1%
Information	497.1	4.2	2.7	13.3	11.5%	17.2	7.3%	1.2	0.5%
Financial Activities	916.7	0.1	-0.3	-0.6	-0.3%	1.7	0.4%	7.7	1.7%
Professional Services	921.9	1.6	3.0	6.3	2.8%	9.1	2.0%	6.1	1.4%
Management Companies	230.9	0.2	0.1	0.2	0.3%	0.2	0.2%	-7.0	-5.8%
Administrative Support	988.8	-0.4	0.8	1.6	0.6%	3.0	0.6%	23.1	5.0%
Education and Healthcare	1582.6	-0.7	2.0	4.2	1.1%	9.4	1.2%	11.5	1.5%
Leisure and Hospitality	1470.6	-3.2	-0.3	-1.5	-0.4%	7.3	1.0%	16.3	2.3%
Other Services	507.5	-1.9	-1.2	-3.0	-2.3%	-1.0	-0.4%	-1.5	-0.6%
Total Government	2387.2	-3.8	0.2	-3.3	-0.6%	2.0	0.2%	-8.5	-0.7%
Federal Government	246.8	-0.1	0.2	0.1	0.2%	-0.3	-0.2%	-3.1	-2.4%
State and Local Education	1142.4	-1.4	0.0	-2.4	-0.8%	1.5	0.3%	1.6	0.3%
Other State and Local	998.0	-2.3	0.1	-0.9	-0.4%	0.9	0.2%	-7.0	-1.4%
Household Statistics									
Labor Force	17795.7	15.9	67.9	141.7	3.2%	161.8	1.8%	83.2	1.0%
Household Employment	16879.0	52.6	69.6	189.6	4.6%	286.2	3.5%	130.6	1.6%
Unemployment Rate	5.2%	-0.21%	-0.03%	-0.31%		-0.75%		-0.30%	

The California EDD also releases seasonally adjusted data for California. As the EDD uses a different algorithm for this process, their numbers may differ from ours on a month to month basis.

Los Angeles County: Employment Charts and Summary

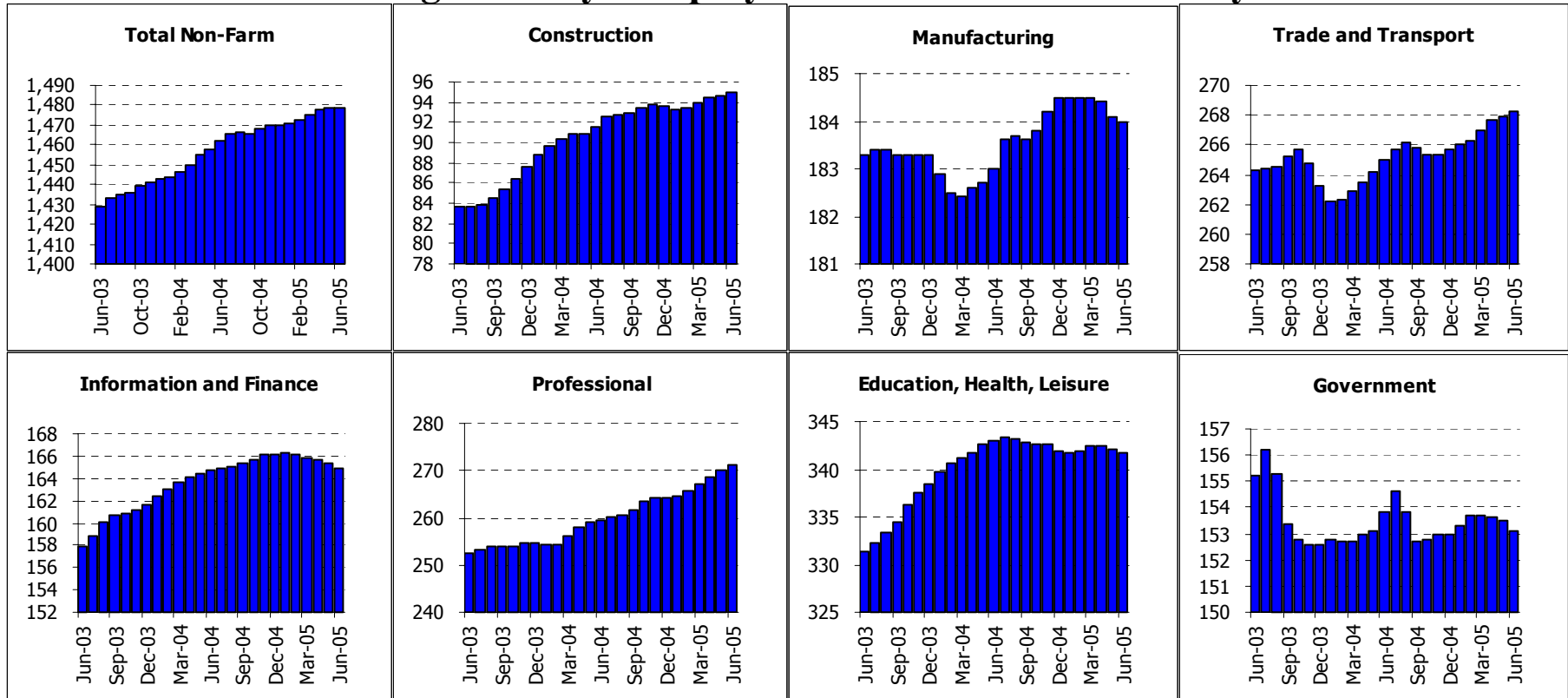


Summary: Los Angeles showed strong job gains in June, the fifth month in a row the MSA has seen solid growth. This brings the quarterly growth up to 19,300, a 2% annualized growth rate. Construction, retail trade and professional services have all seen solid growth. The largest driver of job formation, however, is the Motion Picture industry in the Information sector. This sector has added 20,000 jobs since the start of the year. This is a good sign for the economy, but it must also be remembered that jobs in this industry are quite variable, and strong gains in the short run are often offset by job losses later on. We remain cautious in our assessment of the overall health of the economy, especially given the distended nature of the real estate markets, and the lack of solid job formation in manufacturing. Unemployment fell last month as well, but this was largely due to a decline in the labor force.

Los Angeles County: Employment Tables (thousands)

	Current	Monthly Change		Quarterly Change		Year-to-date 2005		Year-to-date 2004	
	Level	May-05	Apr-05						
Payroll Statistics	Jun-05	Jun-05	May-05	Abs.	% AR	Abs.	% AR	Abs.	% AR
Total Non-Farm	4025.1	5.9	5.7	19.3	1.9%	32.2	1.6%	12.7	0.6%
Total Private	3444.4	5.8	5.5	19.1	2.2%	32.8	1.9%	16.5	1.0%
Construction	145.7	0.7	0.7	1.9	5.4%	5.2	7.5%	3.0	4.4%
Durable Manufacturing	266.5	-0.2	0.0	-0.1	-0.1%	-0.3	-0.2%	-1.3	-1.0%
Non-Durable Manufacturing	209.1	-0.5	-0.7	-2.0	-3.7%	-3.4	-3.2%	-3.4	-3.1%
Wholesale Trade	212.4	-0.2	0.2	0.1	0.2%	-1.2	-1.1%	0.8	0.7%
Retail Trade	407.0	0.7	1.2	2.9	2.9%	3.0	1.5%	4.2	2.1%
Transportation and Utilities	163.4	-0.4	-0.1	-0.2	-0.5%	0.5	0.6%	2.0	2.5%
Information	223.3	6.2	3.5	14.4	30.6%	20.2	20.9%	1.5	1.4%
Financial Activities	245.3	0.2	0.1	0.3	0.5%	1.0	0.8%	1.1	0.9%
Professional Services	240.3	0.6	0.6	1.0	1.7%	1.4	1.2%	1.9	1.6%
Management Companies	70.6	-0.4	-0.2	-0.7	-3.9%	0.2	0.6%	-2.8	-7.4%
Administrative Support	257.5	-0.2	0.4	0.8	1.3%	0.4	0.3%	6.3	5.2%
Education and Healthcare	473.8	0.1	-0.1	0.1	0.1%	2.5	1.1%	1.0	0.4%
Leisure and Hospitality	379.4	-0.4	-0.3	-0.1	-0.1%	5.3	2.9%	2.8	1.5%
Other Services	145.9	0.0	0.1	0.4	1.1%	0.5	0.7%	-0.5	-0.7%
Total Government	580.7	0.1	0.2	0.3	0.2%	-0.5	-0.2%	-3.8	-1.3%
Federal Government	54.2	0.1	0.2	0.5	3.8%	0.5	1.9%	-0.3	-1.1%
State and Local Education	290.0	0.1	0.1	-0.3	-0.4%	-2.7	-1.8%	-1.9	-1.3%
Other State and Local	236.5	0.0	-0.1	0.2	0.3%	1.7	1.5%	-1.7	-1.4%
Household Statistics									
Labor Force	4897.2	-16.6	16.2	41.5	3.5%	59.5	2.5%	34.8	1.5%
Household Employment	4635.8	-0.3	18.5	61.0	5.4%	104.6	4.7%	38.9	1.8%
Unemployment Rate	5.3%	-0.31%	-0.07%	-0.45%		-1.00%		-0.13%	

Orange County: Employment Charts and Summary

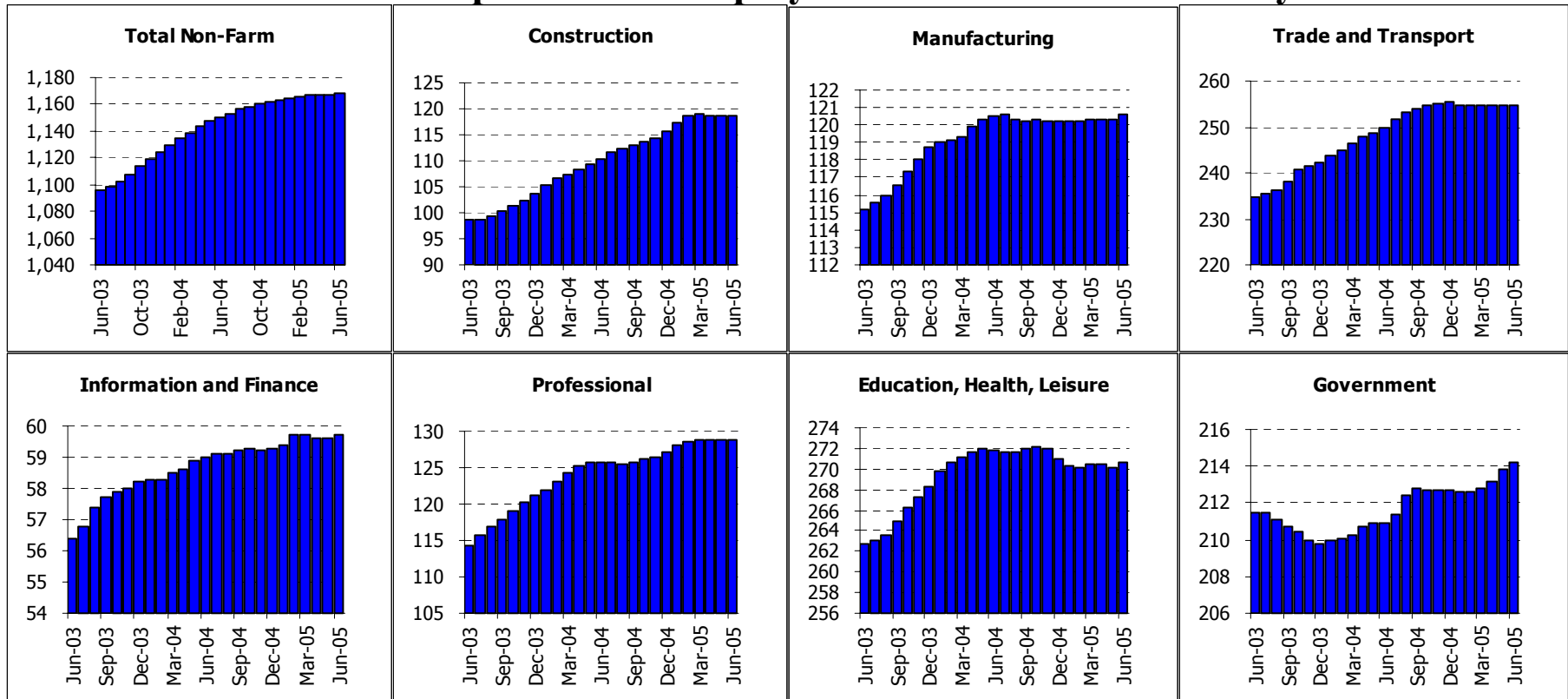


Summary: Orange County employment growth was slow again in June, bringing the quarterly growth rate to a paltry 1%. Gains in construction, transport, and professional services were offset by losses in manufacturing, information and surprisingly in the healthcare and leisure industries. Public employment also remains a weak point in the economy. Still last year at this time the County was also showing slow growth, and this was erased with the substantial revisions in the data that occurred at the start of this year. It remains to be seen if next year's revisions will alter our view of the economy accordingly. Unemployment remains steady at 3.6%, indicative of an economy that is added jobs, but not at a pace that would match last year.

Orange County: Employment Tables (thousands)

	Current	Monthly Change		Quarterly Change		Year-to-date 2005		Year-to-date 2004	
	Level	May-05	Apr-05						
Payroll Statistics	Jun-05	Jun-05	May-05	Abs.	% AR	Abs.	% AR	Abs.	% AR
Total Non-Farm	1478.8	0.4	0.9	3.5	1.0%	8.5	1.2%	19.3	2.7%
Total Private	1325.7	0.8	1.0	4.1	1.2%	8.5	1.3%	18.0	2.8%
Construction	94.9	0.2	0.3	1.0	4.3%	1.3	2.8%	4.0	9.3%
Durable Manufacturing	127.7	0.0	-0.1	-0.2	-0.6%	0.1	0.2%	-0.1	-0.2%
Non-Durable Manufacturing	56.3	0.0	-0.3	-0.4	-2.8%	-0.4	-1.4%	-0.2	-0.7%
Wholesale Trade	82.6	0.3	0.0	0.2	1.0%	0.5	1.2%	0.5	1.2%
Retail Trade	156.8	0.3	0.4	1.3	3.4%	3.2	4.2%	1.4	1.9%
Transportation and Utilities	28.9	-0.2	-0.1	-0.3	-4.0%	-0.3	-2.0%	-0.1	-0.7%
Information	32.1	-0.5	-0.2	-0.9	-10.5%	-1.1	-6.5%	-0.7	-4.1%
Financial Activities	132.8	0.1	-0.1	-0.1	-0.3%	-0.2	-0.3%	3.8	6.0%
Professional Services	99.4	0.4	0.6	1.4	5.8%	2.0	4.1%	1.4	2.9%
Management Companies	31.3	0.2	0.3	0.9	12.4%	0.5	3.3%	-0.2	-1.3%
Administrative Support	140.6	0.7	0.7	2.1	6.2%	4.6	6.9%	3.8	6.0%
Education and Healthcare	130.5	0.2	-0.1	-0.2	-0.6%	0.0	0.0%	1.3	2.0%
Leisure and Hospitality	163.6	-0.3	-0.3	-0.3	-0.7%	-0.7	-0.9%	2.7	3.4%
Other Services	47.6	-0.2	-0.1	-0.2	-1.7%	0.4	1.7%	0.5	2.1%
Total Government	153.1	-0.4	-0.1	-0.6	-1.6%	0.1	0.1%	1.2	1.6%
Federal Government	11.4	0.1	0.1	0.1	3.6%	-0.1	-1.7%	0.1	1.7%
State and Local Education	90.6	-0.2	-0.1	-0.3	-1.3%	0.4	0.9%	0.9	2.0%
Other State and Local	51.1	-0.2	0.0	-0.2	-1.6%	-0.1	-0.4%	0.2	0.8%
Household Statistics									
Labor Force	1620.4	8.9	8.4	21.3	5.4%	23.1	2.9%	14.1	1.8%
Household Employment	1562.7	9.4	8.6	23.3	6.2%	29.4	3.9%	17.8	2.4%
Unemployment Rate	3.6%	-0.05%	-0.03%	-0.17%		-0.45%		-0.27%	

Inland Empire MSA: Employment Charts and Summary



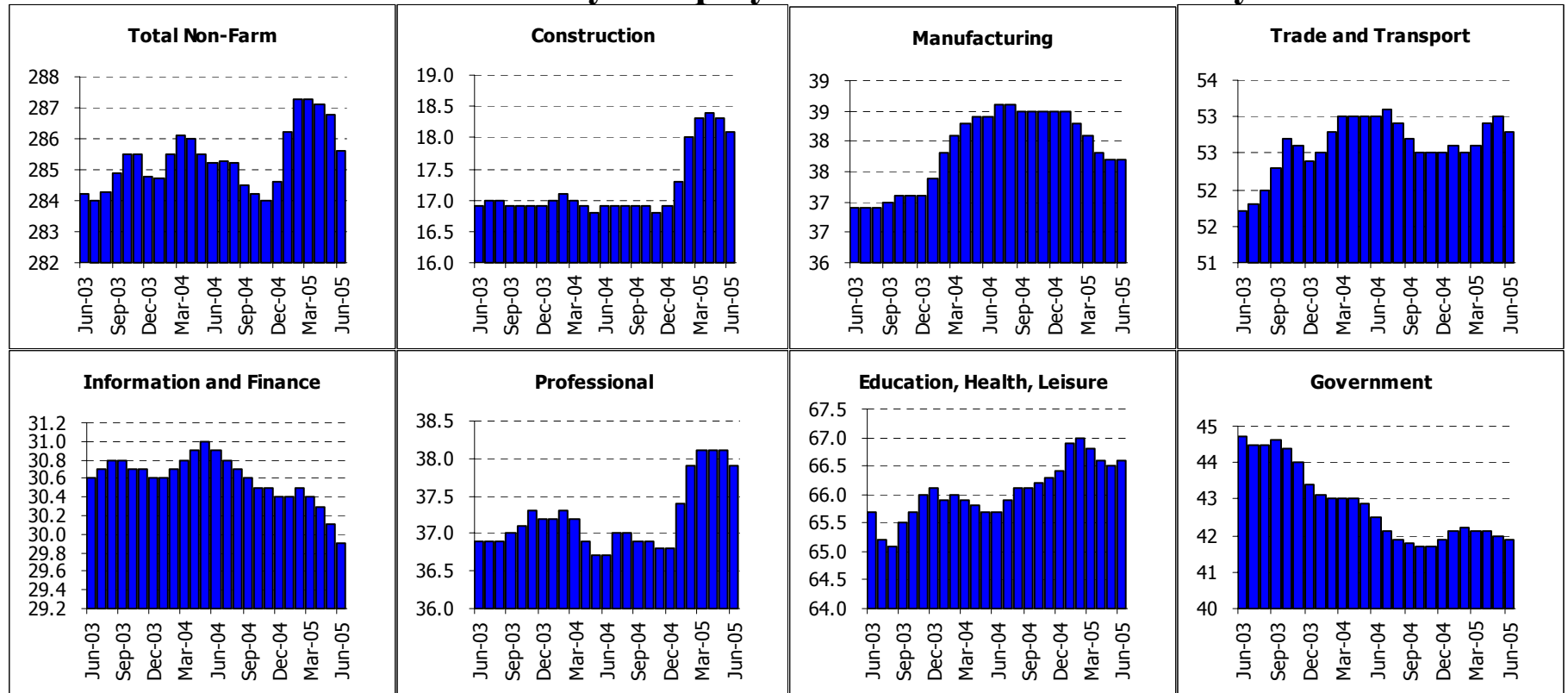
Summary: The job growth picture in the inland empire perked up slightly in June, with a registered increase in employment of 900. This brings the quarterly growth rate up to a .4% annualized—slightly less than the 4.7% annualized increase in jobs seen in the community this time last year. Still, there are problems with the employment surveys in both Orange County and the Inland Empire that make it likely that these numbers will be upgraded somewhat. Still—even while growth may be undercounted, it is clear that overall growth has slowed somewhat since last year. A leveling off in new home construction may be one reason for this, accounting for the leveling off of new jobs in the construction industry. Still construction has added more jobs than any other sector since the start of the year, followed by public sector jobs and jobs in professional services. Unemployment stayed steady%, indicative of an economy that is added jobs, but not at a pace that would match last year.

Inland Empire MSA: Employment Tables (thousands)

	Current	Monthly Change		Quarterly Change		Year-to-date 2005		Year-to-date 2004	
	Level	May-05	Apr-05						
Payroll Statistics	Jun-05	Jun-05	May-05	Abs.	% AR	Abs.	% AR	Abs.	% AR
Total Non-Farm	1168.5	0.9	0.1	1.2	0.4%	5.5	0.9%	26.0	4.7%
Total Private	954.3	0.5	-0.5	-0.2	-0.1%	4.1	0.9%	25.0	5.5%
Construction	118.6	0.0	-0.1	-0.4	-1.3%	2.9	5.1%	6.6	13.1%
Durable Manufacturing	85.9	0.2	0.1	0.2	0.9%	-0.1	-0.2%	1.6	3.8%
Non-Durable Manufacturing	34.7	0.1	-0.1	0.1	1.2%	0.5	2.9%	0.2	1.2%
Wholesale Trade	45.2	0.0	0.0	-0.1	-0.9%	-0.3	-1.3%	0.6	2.8%
Retail Trade	153.5	0.3	0.1	0.4	1.0%	0.0	0.0%	4.8	6.6%
Transportation and Utilities	56.2	-0.1	-0.2	-0.3	-2.1%	0.6	2.2%	2.5	9.9%
Information	13.7	0.0	0.0	-0.1	-2.9%	0.1	1.5%	-0.1	-1.4%
Financial Activities	46.0	0.1	0.0	0.1	0.9%	0.3	1.3%	0.9	4.1%
Professional Services	32.2	0.3	0.3	1.0	13.5%	0.9	5.8%	1.9	13.5%
Management Companies	11.9	0.1	0.1	0.2	7.0%	0.4	7.1%	0.1	1.8%
Administrative Support	84.6	-0.4	-0.6	-1.2	-5.5%	0.3	0.7%	2.6	6.5%
Education and Healthcare	118.1	0.3	0.1	0.6	2.1%	1.0	1.7%	1.2	2.1%
Leisure and Hospitality	113.3	0.1	-0.4	-0.6	-2.1%	-2.1	-3.6%	2.3	4.1%
Other Services	39.2	0.1	0.0	0.2	2.1%	0.7	3.7%	0.0	0.0%
Total Government	214.2	0.4	0.6	1.4	2.7%	1.5	1.4%	1.1	1.1%
Federal Government	17.4	0.2	0.2	0.6	15.1%	0.5	6.0%	0.0	0.0%
State and Local Education	107.9	0.0	0.0	-0.1	-0.4%	-0.7	-1.3%	0.6	1.1%
Other State and Local	88.9	0.3	0.4	1.1	5.1%	1.8	4.2%	0.5	1.2%
Household Statistics									
Labor Force	1684.7	9.2	7.5	18.2	4.4%	21.0	2.5%	28.1	3.5%
Household Employment	1601.2	9.8	7.7	21.2	5.5%	27.8	3.6%	30.6	4.1%
Unemployment Rate	5.0%	-0.06%	-0.03%	-0.23%		-0.47%		-0.25%	

The Inland Empire is made up of Riverside and San Bernardino counties

Ventura County: Employment Charts and Summary

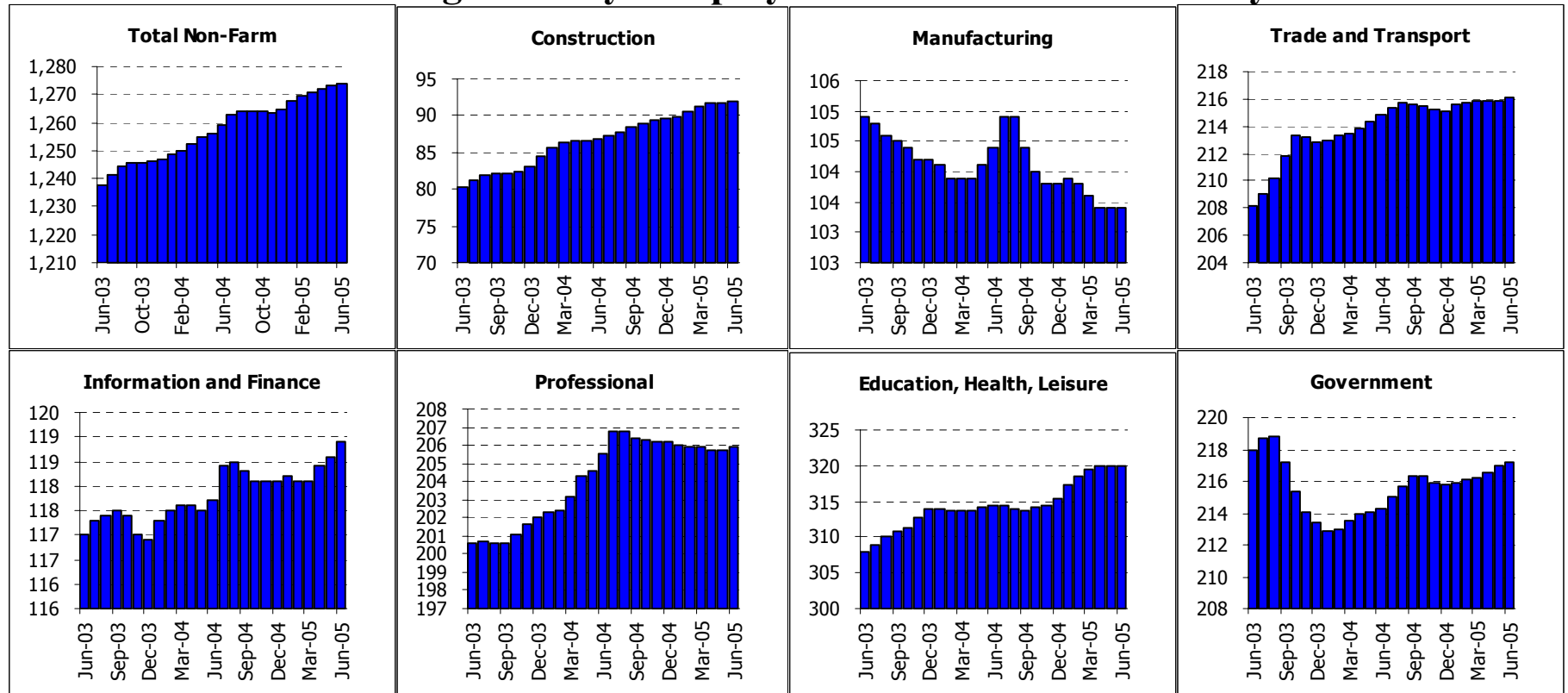


Summary: Ventura lost 1,200 jobs in June, bringing the quarterly job losses up to 1,700 total. Losses have been led by declines in finance employment (600), education (500) and administrative support (300). Still the numbers for Ventura are notoriously volatile, and these slow growth figures come on top of strong gains at the start of the year. Employment is still up by 1,000 jobs. Unemployment remains at 4.7%.

Ventura County: Employment Tables (thousands)

	Current	Monthly Change		Quarterly Change		Year-to-date 2005		Year-to-date 2004	
	Level	May-05	Apr-05						
Payroll Statistics	Jun-05	Jun-05	May-05	Abs.	% AR	Abs.	% AR	Abs.	% AR
Total Non-Farm	285.6	-1.2	-0.3	-1.7	-2.3%	1.0	0.7%	0.4	0.3%
Total Private	243.7	-1.0	-0.3	-1.4	-2.3%	1.0	0.8%	1.2	1.0%
Construction	18.1	-0.2	-0.1	-0.2	-4.3%	1.2	14.7%	0.0	0.0%
Durable Manufacturing	24.0	0.0	-0.1	-0.2	-3.3%	-0.3	-2.5%	0.5	4.2%
Non-Durable Manufacturing	13.7	0.0	0.0	-0.2	-5.6%	-0.5	-6.9%	0.8	12.4%
Wholesale Trade	11.4	-0.2	0.0	-0.2	-6.7%	-0.5	-8.2%	0.3	5.2%
Retail Trade	35.7	0.0	0.1	0.3	3.4%	0.9	5.2%	0.3	1.7%
Transportation and Utilities	5.7	0.1	0.0	0.1	7.3%	0.2	7.4%	0.1	3.6%
Information	6.8	0.0	0.0	0.1	6.1%	0.2	6.2%	0.1	2.9%
Financial Activities	23.1	-0.2	-0.2	-0.6	-9.7%	-0.7	-5.8%	0.2	1.7%
Professional Services	14.0	0.0	0.1	0.1	2.9%	0.3	4.4%	0.1	1.5%
Management Companies	3.5	0.1	0.0	0.1	12.3%	0.1	6.0%	-0.3	-14.8%
Administrative Support	20.4	-0.2	-0.1	-0.3	-5.7%	0.7	7.2%	-0.3	-3.0%
Education and Healthcare	28.2	0.1	-0.1	-0.1	-1.4%	0.1	0.7%	-0.4	-2.9%
Leisure and Hospitality	28.3	0.0	0.0	0.0	0.0%	0.0	0.0%	0.2	1.4%
Other Services	10.1	0.0	0.0	-0.1	-3.9%	0.1	2.0%	-0.2	-3.8%
Total Government	41.9	-0.1	-0.1	-0.2	-1.9%	0.0	0.0%	-0.9	-4.1%
Federal Government	7.5	0.0	0.0	0.0	0.0%	0.0	0.0%	0.1	2.6%
State and Local Education	18.5	-0.1	-0.1	-0.5	-10.1%	-0.4	-4.2%	-0.6	-6.1%
Other State and Local	15.9	0.0	0.0	-0.1	-2.5%	-0.1	-1.2%	-0.4	-4.8%
Household Statistics									
Labor Force	421.2	1.0	1.3	2.4	2.3%	5.0	2.4%	1.7	0.8%
Household Employment	401.6	1.2	1.3	3.2	3.3%	6.3	3.2%	2.0	1.0%
Unemployment Rate	4.7%	-0.06%	-0.01%	-0.22%		-0.37%		-0.09%	

San Diego County: Employment Charts and Summary

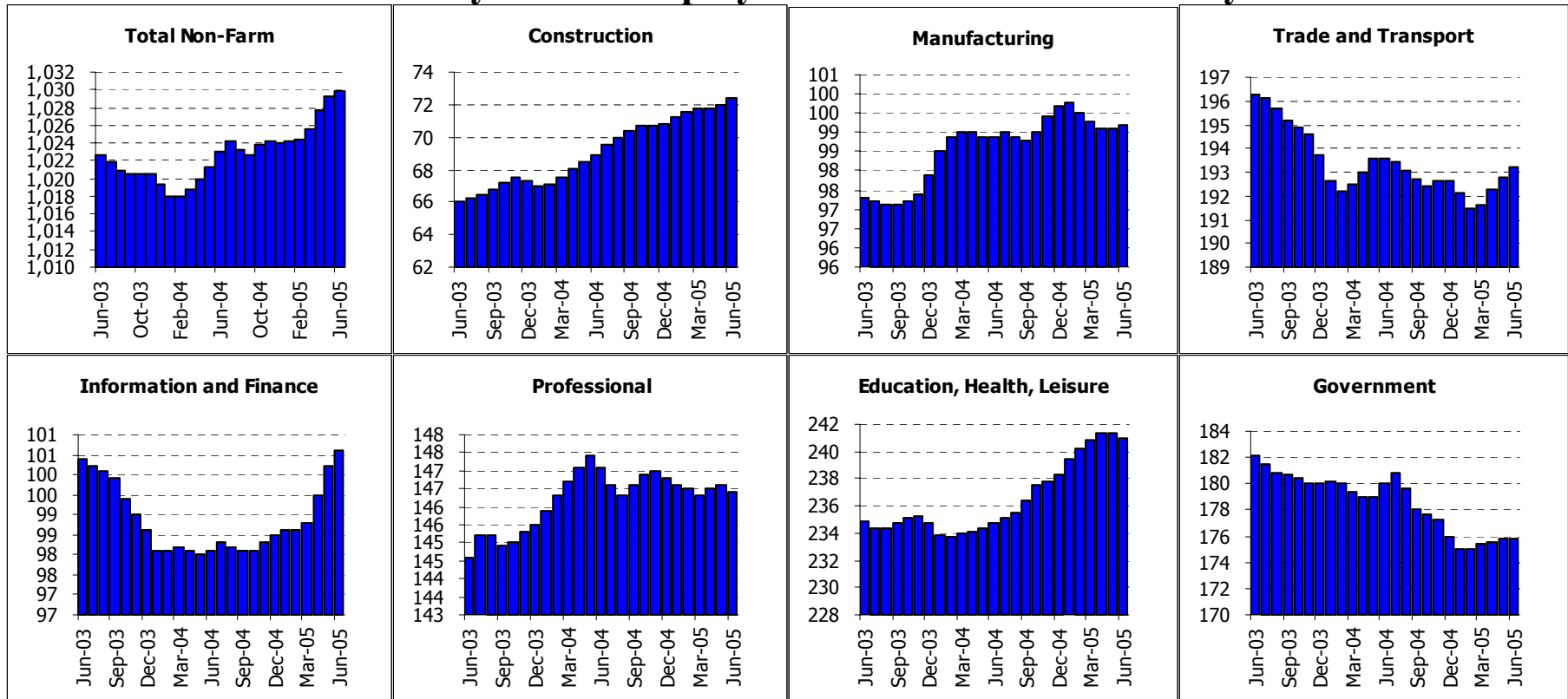


Summary: Besides LA, San Diego is one of the few economies in the state seeing solid growth in information employment. This sector added 500 jobs of the last quarter. Gains here plus in professional services and of course construction have kept the economy ticking forward, although not at the same pace as last year. Overall the economy has added 8,800 jobs since December, as opposed to 12,000 by this time last year. Some weakness in Manufacturing and in Administrative Support jobs (primarily temporary employment) explains the shift. Still, unemployment remains at a low 4.1%.

San Diego County: Employment Tables (thousands)

	Current	Monthly Change		Quarterly Change		Year-to-date 2005		Year-to-date 2004	
	Level	May-05	Apr-05						
Payroll Statistics	Jun-05	Jun-05	May-05	Abs.	% AR	Abs.	% AR	Abs.	% AR
Total Non-Farm	1273.7	0.7	0.8	2.7	0.9%	8.8	1.4%	11.9	1.9%
Total Private	1056.5	0.5	0.3	1.7	0.6%	7.4	1.4%	11.1	2.2%
Construction	91.9	0.1	0.1	0.6	2.7%	2.3	5.2%	3.7	9.1%
Durable Manufacturing	77.8	0.0	0.1	0.0	0.0%	0.1	0.3%	0.2	0.5%
Non-Durable Manufacturing	25.6	0.0	-0.1	-0.2	-3.1%	-0.4	-3.1%	0.0	0.0%
Wholesale Trade	42.2	0.2	-0.1	0.0	0.0%	0.0	0.0%	-0.1	-0.5%
Retail Trade	145.6	0.1	0.1	0.5	1.4%	1.8	2.5%	2.3	3.2%
Transportation and Utilities	28.3	0.0	-0.1	-0.2	-2.8%	-0.2	-1.4%	-0.1	-0.7%
Information	36.9	0.1	0.1	0.5	5.6%	0.6	3.3%	0.1	0.6%
Financial Activities	82.0	0.2	0.1	0.3	1.5%	0.2	0.5%	0.7	1.7%
Professional Services	99.6	0.3	0.3	0.6	2.4%	0.3	0.6%	-1.8	-3.5%
Management Companies	18.1	0.0	0.0	0.1	2.2%	0.0	0.0%	-0.3	-3.2%
Administrative Support	88.2	-0.1	-0.3	-0.7	-3.1%	-0.5	-1.1%	5.6	14.2%
Education and Healthcare	122.6	0.2	0.1	0.3	1.0%	1.4	2.3%	-1.3	-2.1%
Leisure and Hospitality	148.4	-0.2	0.0	0.4	1.1%	2.7	3.7%	1.8	2.5%
Other Services	48.9	0.0	-0.1	-0.2	-1.6%	0.3	1.2%	0.0	0.0%
Total Government	217.2	0.2	0.5	1.0	1.9%	1.4	1.3%	0.9	0.8%
Federal Government	38.8	0.1	-0.1	-0.1	-1.0%	-0.2	-1.0%	-0.1	-0.5%
State and Local Education	99.9	0.6	0.7	1.7	7.1%	1.5	3.1%	0.5	1.0%
Other State and Local	78.5	-0.4	-0.1	-0.5	-2.5%	0.2	0.5%	0.6	1.6%
Household Statistics									
Labor Force	1522.7	9.3	8.1	19.0	5.2%	24.1	3.2%	11.7	1.6%
Household Employment	1460.2	10.0	8.0	21.2	6.0%	29.0	4.1%	13.3	1.9%
Unemployment Rate	4.1%	-0.07%	-0.02%	-0.20%		-0.39%		-0.15%	

East Bay MSA: Employment Charts and Summary



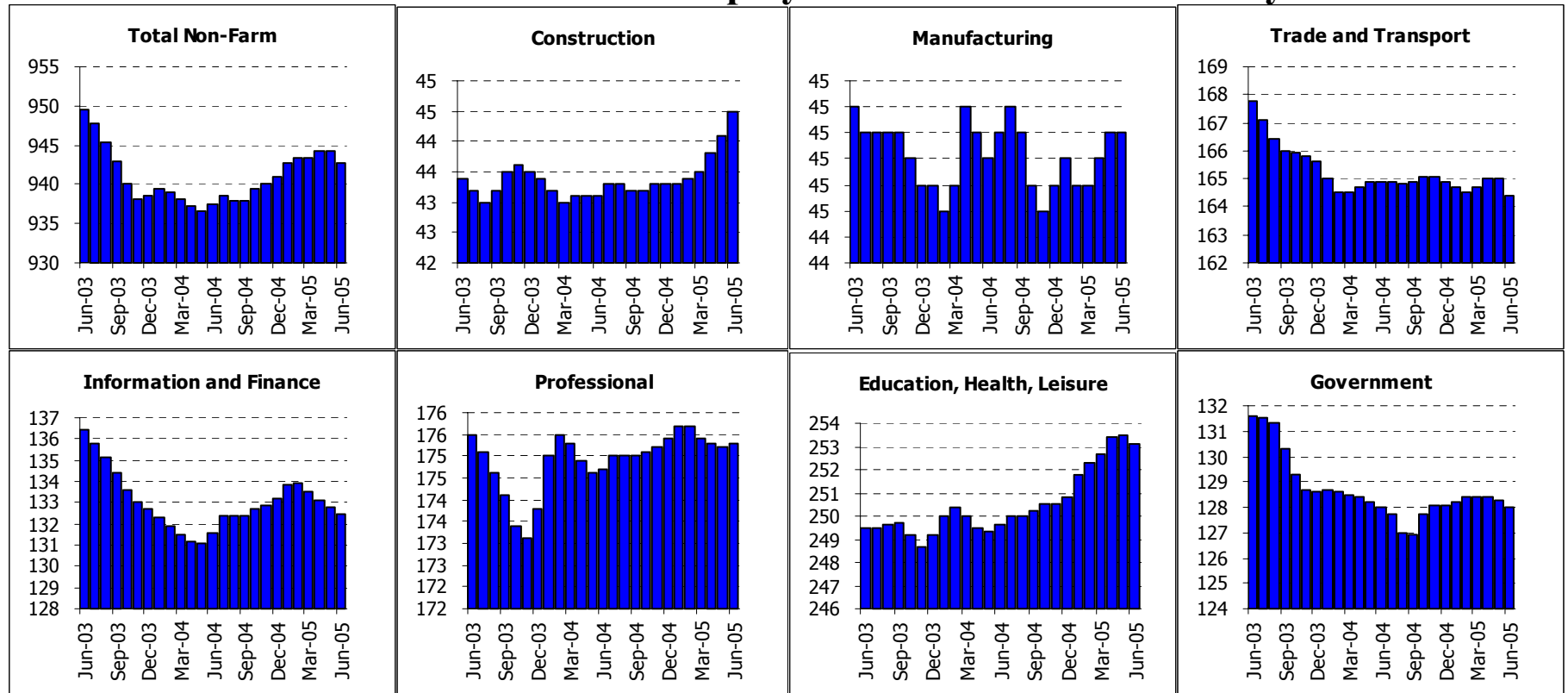
Summary: The East Bay added 600 jobs in June, bringing its quarterly growth up to 1.6% annualized. Administrative Support jobs and employment in durable manufacturing were the weakest sectors, offsetting gains almost everywhere else. The unemployment rate fell again, to 4.7%. The East Bay is now growing faster than it did last year, illustrating the recovery in the region.

East Bay MSA: Employment Tables (thousands)

	Current	Monthly Change		Quarterly Change		Year-to-date 2005		Year-to-date 2004	
	Level	May-05	Apr-05						
Payroll Statistics	Jun-05	Jun-05	May-05	Abs.	% AR	Abs.	% AR	Abs.	% AR
Total Non-Farm	1029.8	0.6	1.5	4.2	1.6%	5.7	1.1%	3.6	0.7%
Total Private	854.0	0.6	1.4	3.8	1.8%	5.9	1.4%	3.6	0.9%
Construction	72.4	0.4	0.2	0.6	3.4%	1.6	4.6%	1.6	4.8%
Durable Manufacturing	62.9	0.0	-0.2	-0.5	-3.1%	-0.8	-2.5%	1.3	4.2%
Non-Durable Manufacturing	36.3	0.2	0.1	0.4	4.5%	0.3	1.7%	-0.2	-1.1%
Wholesale Trade	48.3	0.2	0.1	0.3	2.5%	-0.4	-1.6%	-0.3	-1.2%
Retail Trade	110.6	0.2	0.3	1.1	4.1%	1.3	2.4%	0.4	0.7%
Transportation and Utilities	34.3	0.1	0.1	0.2	2.4%	0.3	1.8%	-0.3	-1.7%
Information	30.3	-0.1	0.2	0.3	4.1%	0.0	0.0%	-0.5	-3.1%
Financial Activities	70.3	0.5	0.5	1.5	9.0%	2.1	6.3%	0.0	0.0%
Professional Services	70.0	0.2	0.4	0.7	4.1%	0.2	0.6%	0.2	0.6%
Management Companies	21.2	0.0	0.0	0.1	1.9%	0.2	1.9%	-0.2	-1.8%
Administrative Support	55.2	-0.3	-0.3	-0.7	-4.9%	-0.7	-2.5%	1.7	6.4%
Education and Healthcare	122.3	0.2	0.0	0.4	1.3%	2.6	4.4%	0.4	0.7%
Leisure and Hospitality	82.1	-0.3	0.0	-0.1	-0.5%	0.4	1.0%	-0.4	-1.0%
Other Services	36.6	-0.2	-0.1	-0.1	-1.1%	-0.3	-1.6%	0.0	0.0%
Total Government	175.8	0.0	0.2	0.4	0.9%	-0.2	-0.2%	0.0	0.0%
Federal Government	17.0	0.0	0.0	0.1	2.4%	0.0	0.0%	-0.6	-6.6%
State and Local Education	84.5	0.1	0.1	0.3	1.4%	1.3	3.1%	1.9	4.6%
Other State and Local	74.3	0.1	0.1	0.1	0.5%	-1.4	-3.7%	-1.3	-3.3%
Household Statistics									
Labor Force	1275.6	6.8	6.9	16.7	5.4%	14.0	2.2%	-5.4	-0.9%
Household Employment	1215.6	8.0	7.5	20.1	6.9%	22.2	3.8%	1.8	0.3%
Unemployment Rate	4.7%	-0.12%	-0.07%	-0.33%		-0.70%		-0.55%	

East Bay is also known as the Oakland MSA. It is made up of Alameda and Contra Costa counties.

San Francisco MSA: Employment Charts and Summary



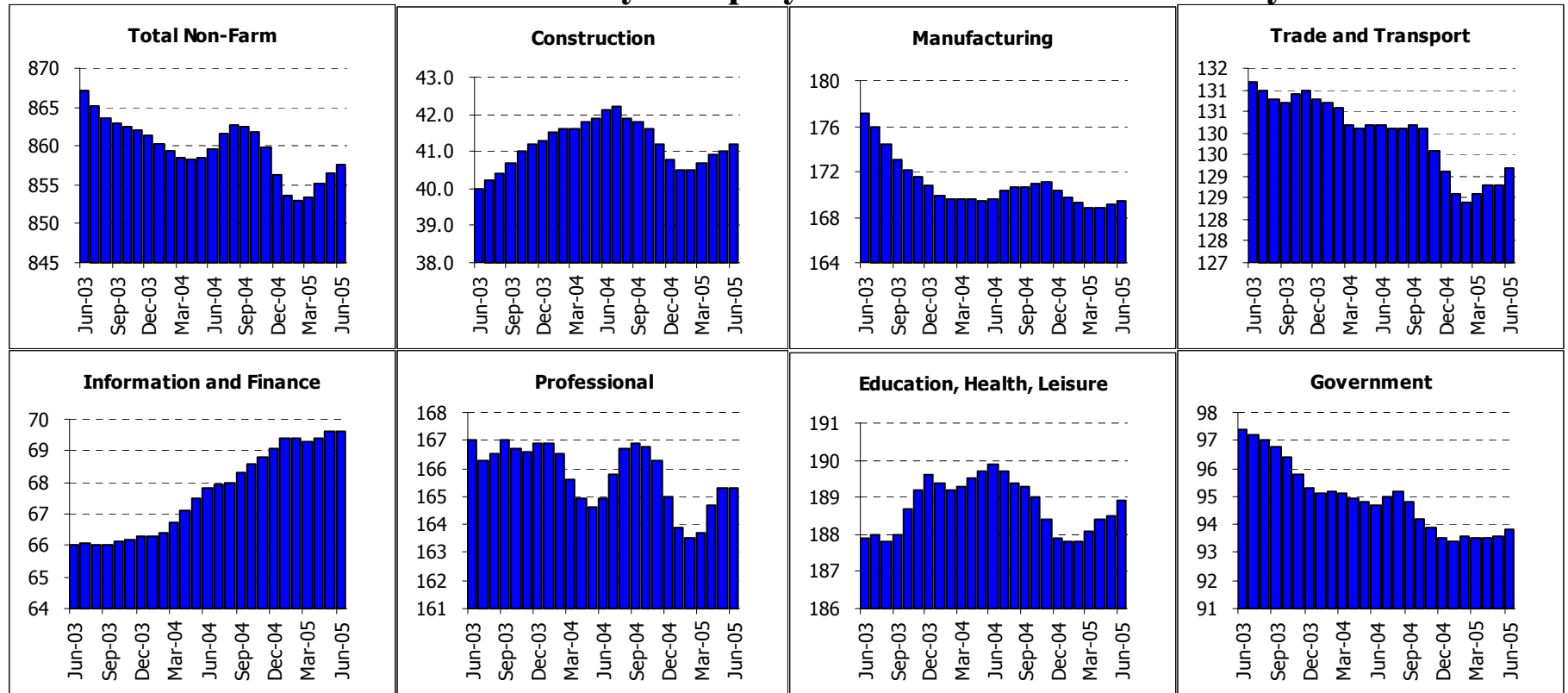
Summary: San Francisco and the peninsula lost 1400 payroll jobs this month, in an across the board drop in most sectors – construction was the only sector to experience significant job growth this month. Transportation and Education/Health Care were especially hard hit. In contrast, the household survey shows an increase of 3,500 jobs, making the overall employment picture murky at best. The unemployment rate fell to 4.3%.

San Francisco MSA: Employment Tables (thousands)

	Current	Monthly Change		Quarterly Change		Year-to-date 2005		Year-to-date 2004	
	Level	May-05	Apr-05						
Payroll Statistics	Jun-05	Jun-05	May-05	Abs.	% AR	Abs.	% AR	Abs.	% AR
Total Non-Farm	942.8	-1.4	-0.1	-0.6	-0.3%	1.9	0.4%	-1.1	-0.2%
Total Private	814.8	-1.1	0.0	-0.2	-0.1%	2.0	0.5%	-0.6	-0.1%
Construction	44.5	0.4	0.3	1.0	9.5%	1.2	5.6%	-0.4	-1.8%
Durable Manufacturing	22.2	-0.1	-0.1	-0.1	-1.8%	-0.2	-1.8%	0.0	0.0%
Non-Durable Manufacturing	22.6	0.1	0.2	0.3	5.5%	0.5	4.6%	0.1	0.9%
Wholesale Trade	26.8	0.0	0.1	0.1	1.5%	0.2	1.5%	-0.2	-1.5%
Retail Trade	93.5	0.0	0.1	0.2	0.9%	0.5	1.1%	-0.2	-0.4%
Transportation and Utilities	44.1	-0.5	-0.2	-0.7	-6.1%	-0.6	-2.7%	-0.2	-0.9%
Information	42.9	-0.2	-0.3	-0.8	-7.1%	-0.9	-4.1%	-0.6	-2.7%
Financial Activities	89.6	-0.1	0.0	-0.2	-0.9%	0.2	0.4%	-0.5	-1.1%
Professional Services	99.0	0.1	0.0	0.0	0.0%	-0.1	-0.2%	0.9	1.9%
Management Companies	21.2	-0.1	-0.2	-0.5	-8.9%	-0.3	-2.8%	-1.1	-9.3%
Administrative Support	55.1	0.1	0.2	0.4	3.0%	0.3	1.1%	1.1	4.2%
Education and Healthcare	100.5	-0.4	-0.1	-0.2	-0.8%	0.6	1.2%	0.5	1.0%
Leisure and Hospitality	115.9	-0.1	0.1	0.2	0.7%	1.4	2.5%	0.5	0.9%
Other Services	36.7	0.1	0.1	0.4	4.5%	0.3	1.7%	-0.6	-3.2%
Total Government	128.0	-0.3	-0.1	-0.4	-1.2%	-0.1	-0.2%	-0.6	-0.9%
Federal Government	21.4	-0.1	0.0	-0.2	-3.7%	-0.3	-2.7%	-0.1	-0.9%
State and Local Education	48.0	-0.1	-0.1	-0.3	-2.5%	0.0	0.0%	-0.4	-1.7%
Other State and Local	58.6	0.0	0.1	0.2	1.4%	0.3	1.0%	0.0	0.0%
Household Statistics									
Labor Force	928.0	2.6	3.6	7.4	3.3%	7.4	1.6%	-6.0	-1.3%
Household Employment	888.2	3.5	3.9	9.9	4.6%	13.3	3.1%	-1.3	-0.3%
Unemployment Rate	4.3%	-0.11%	-0.05%	-0.31%		-0.68%		-0.48%	

The San Francisco MSA includes Marin, San Francisco and San Mateo counties

Santa Clara County: Employment Charts and Summary



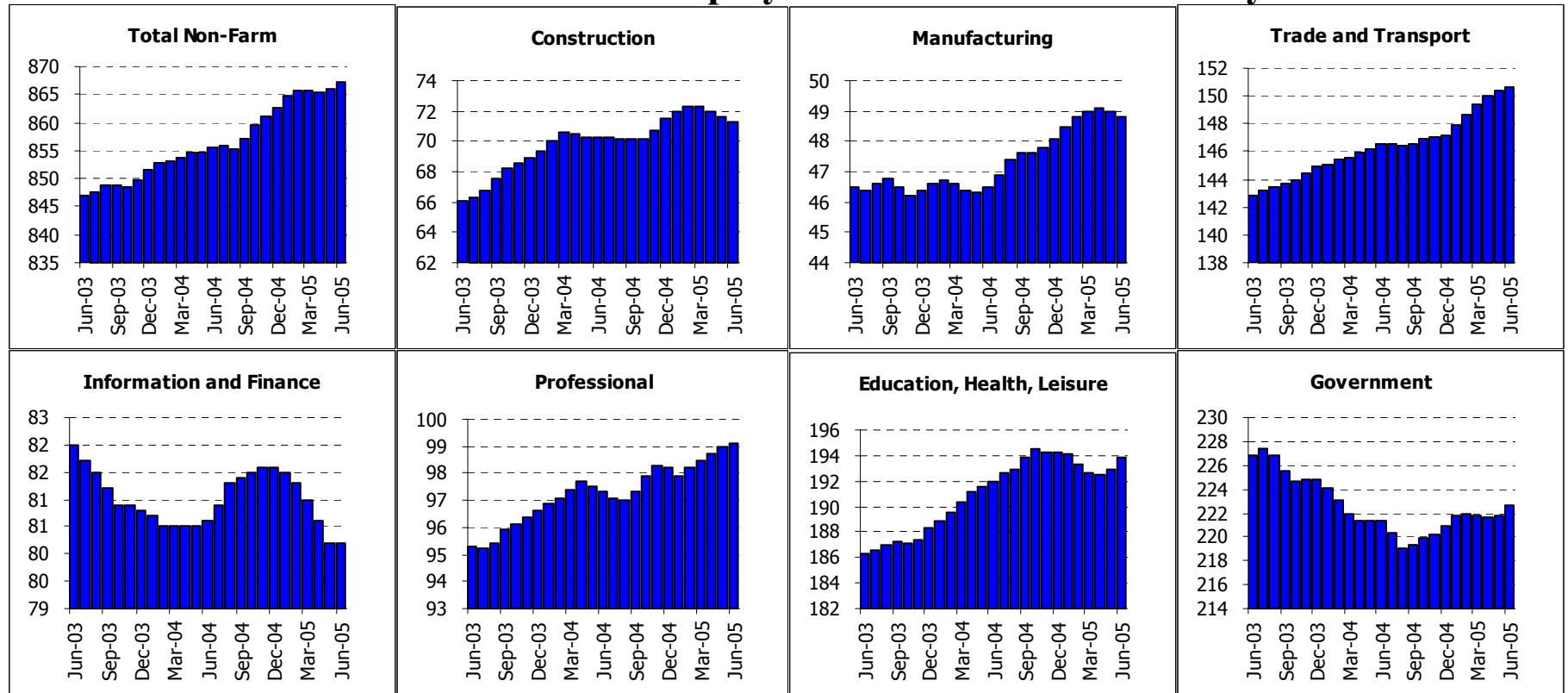
Summary: Santa Clara County continues its upward surge after the lethargy of late last year, adding 1300 new jobs to nonfarm payrolls. The recovery is across all major sectors of the economy, with only leisure/hospitality and professional/business services showing job losses. Unemployment continues to drop, bringing the San Jose area back in line with the rest of California.

Santa Clara County: Employment Tables (thousands)

	Current	Monthly Change		Quarterly Change		Year-to-date 2005		Year-to-date 2004	
	Level	May-05	Apr-05						
Payroll Statistics	Jun-05	Jun-05	May-05	Abs.	% AR	Abs.	% AR	Abs.	% AR
Total Non-Farm	857.7	1.3	1.3	4.3	2.0%	1.4	0.3%	-1.7	-0.4%
Total Private	763.9	1.2	1.2	4.1	2.2%	1.2	0.3%	-1.1	-0.3%
Construction	41.2	0.2	0.1	0.5	5.0%	0.4	2.0%	0.8	3.9%
Durable Manufacturing	157.5	0.2	0.2	0.4	1.0%	-0.4	-0.5%	-0.6	-0.8%
Non-Durable Manufacturing	12.0	0.2	0.1	0.2	7.0%	-0.3	-4.8%	-0.5	-8.0%
Wholesale Trade	34.8	0.2	0.0	0.3	3.5%	0.2	1.2%	0.0	0.0%
Retail Trade	81.5	0.3	0.1	0.6	3.0%	0.8	2.0%	-0.2	-0.5%
Transportation and Utilities	12.9	0.0	-0.2	-0.3	-8.8%	-0.6	-8.7%	-0.5	-7.1%
Information	34.3	0.0	0.2	0.4	4.8%	0.6	3.6%	1.2	7.7%
Financial Activities	35.3	0.0	0.0	-0.1	-1.1%	-0.1	-0.6%	0.3	1.7%
Professional Services	94.8	-0.1	-0.1	-0.1	-0.4%	-1.4	-2.9%	-2.0	-4.0%
Management Companies	14.8	-0.1	0.0	-0.2	-5.2%	-0.4	-5.2%	-0.1	-1.3%
Administrative Support	55.7	0.3	0.7	1.9	14.9%	2.1	8.0%	0.1	0.4%
Education and Healthcare	96.1	0.5	0.2	0.6	2.5%	1.0	2.1%	0.3	0.6%
Leisure and Hospitality	67.7	-0.3	-0.1	0.0	0.0%	-0.3	-0.9%	0.2	0.6%
Other Services	25.1	0.2	0.0	0.2	3.3%	0.3	2.4%	-0.2	-1.6%
Total Government	93.8	0.2	0.1	0.3	1.3%	0.3	0.6%	-0.6	-1.3%
Federal Government	9.9	0.0	0.0	0.0	0.0%	-0.2	-3.9%	-0.1	-2.0%
State and Local Education	45.4	0.1	0.1	0.1	0.9%	0.4	1.8%	0.2	0.9%
Other State and Local	38.5	0.1	0.1	0.3	3.2%	0.2	1.0%	-0.6	-3.0%
Household Statistics									
Labor Force	853.4	4.1	4.8	10.9	5.3%	5.4	1.3%	-10.2	-2.3%
Household Employment	808.8	5.5	5.3	13.9	7.2%	11.7	3.0%	-1.1	-0.3%
Unemployment Rate	5.2%	-0.19%	-0.09%	-0.42%		-0.78%		-0.97%	

The San Jose MSA is Santa Clara and San Benito counties.

Sacramento MSA: Employment Charts and Summary



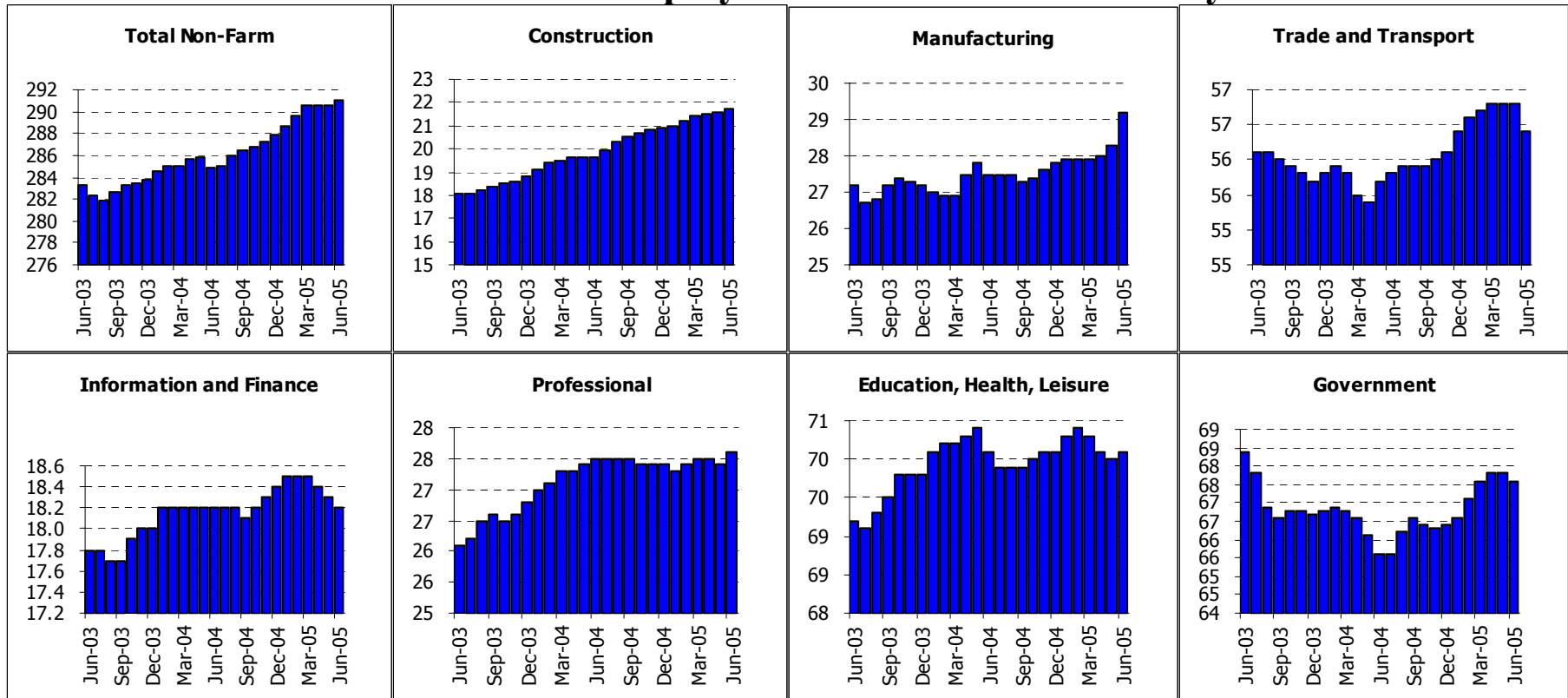
Summary: The Sacramento MSA added 1200 jobs this month, with strong gains in education, health care, retail, and professional services. The loss of information and finance jobs looks to be leveling off; however, the continuing loss of construction jobs remains as a drag on job growth in the region. Local unemployment is still well below the California average, and household employment numbers continue to outpace non-farm payroll growth.

Sacramento MSA: Employment Tables (thousands)

	Current	Monthly Change		Quarterly Change		Year-to-date 2005		Year-to-date 2004	
	Level	May-05	Apr-05						
Payroll Statistics	Jun-05	Jun-05	May-05	Abs.	% AR	Abs.	% AR	Abs.	% AR
Total Non-Farm	867.2	1.2	0.5	1.5	0.7%	4.5	1.0%	3.8	0.9%
Total Private	644.6	0.4	0.4	0.7	0.4%	2.8	0.9%	7.2	2.3%
Construction	71.3	-0.3	-0.4	-1.0	-5.4%	-0.2	-0.6%	1.4	4.1%
Durable Manufacturing	34.2	0.0	-0.1	-0.2	-2.3%	0.6	3.6%	-0.1	-0.6%
Non-Durable Manufacturing	14.6	-0.1	0.0	0.0	0.0%	0.1	1.4%	0.2	3.0%
Wholesale Trade	26.2	0.0	0.0	0.1	1.5%	0.1	0.8%	0.0	0.0%
Retail Trade	100.2	0.2	0.4	1.1	4.5%	3.2	6.7%	1.2	2.5%
Transportation and Utilities	24.2	0.0	0.0	0.0	0.0%	0.5	4.3%	0.4	3.6%
Information	19.6	-0.1	-0.3	-0.6	-11.4%	-1.1	-10.3%	-0.8	-7.3%
Financial Activities	60.6	0.1	-0.1	-0.2	-1.3%	-0.3	-1.0%	0.6	2.0%
Professional Services	43.5	0.2	0.3	0.5	4.7%	0.8	3.8%	0.0	0.0%
Management Companies	8.9	0.2	0.0	0.1	4.6%	0.0	0.0%	-0.6	-11.8%
Administrative Support	46.7	-0.2	0.1	0.0	0.0%	0.2	0.9%	1.3	6.0%
Education and Healthcare	87.1	0.8	0.2	0.9	4.2%	1.2	2.8%	2.2	5.4%
Leisure and Hospitality	78.2	0.2	0.3	0.5	2.6%	-1.7	-4.2%	1.4	3.6%
Other Services	28.6	0.0	-0.1	-0.2	-2.7%	0.2	1.4%	0.1	0.7%
Total Government	222.6	0.8	0.1	0.8	1.5%	1.7	1.5%	-3.5	-3.1%
Federal Government	12.0	0.0	0.0	-0.1	-3.3%	-0.1	-1.6%	-0.5	-7.7%
State and Local Education	91.6	0.9	0.3	1.1	5.0%	1.8	4.0%	0.2	0.4%
Other State and Local	119.0	-0.1	-0.1	-0.1	-0.3%	0.1	0.2%	-3.2	-5.2%
Household Statistics									
Labor Force	1023.1	5.8	5.6	12.7	5.1%	13.2	2.6%	3.1	0.6%
Household Employment	977.6	7.0	5.5	14.6	6.2%	19.1	4.0%	5.6	1.2%
Unemployment Rate	4.4%	-0.14%	-0.02%	-0.24%		-0.64%		-0.27%	

The Sacramento MSA is made up of El Dorado, Placer, Yolo & Sacramento counties

Fresno MSA: Employment Charts and Summary



Summary: Fresno County continues to experience robust growth in manufacturing, while trade and financial services again show a small job loss in June. Leisure and Hospitality bounced back from last month's dip. While Fresno County's unemployment is still high at 8.7%, nonfarm job growth year-to-date stands at a respectable 2.2% annual rate, well above the 0.8% growth at this time last year.

Fresno MSA: Employment Tables (thousands)

	Current	Monthly Change		Quarterly Change		Year-to-date 2005		Year-to-date 2004	
	Level	May-05	Apr-05						
Payroll Statistics	Jun-05	Jun-05	May-05	Abs.	% AR	Abs.	% AR	Abs.	% AR
Total Non-Farm	291.0	0.4	0.0	0.5	0.7%	3.1	2.2%	1.2	0.8%
Total Private	223.4	0.7	0.0	0.6	1.1%	1.9	1.7%	2.2	2.0%
Construction	21.7	0.1	0.1	0.3	5.7%	0.8	7.8%	0.8	8.7%
Durable Manufacturing	11.2	0.1	0.2	0.6	24.6%	0.7	13.8%	0.1	2.0%
Non-Durable Manufacturing	18.0	0.8	0.1	0.8	19.9%	0.7	8.3%	0.2	2.4%
Wholesale Trade	12.3	-0.1	-0.1	-0.3	-9.2%	-0.2	-3.2%	0.2	3.3%
Retail Trade	34.1	-0.1	0.0	0.0	0.0%	0.2	1.2%	-0.1	-0.6%
Transportation and Utilities	10.0	0.0	0.0	0.0	0.0%	0.2	4.1%	0.0	0.0%
Information	4.5	0.0	0.0	0.0	0.0%	0.1	4.6%	0.1	4.6%
Financial Activities	13.7	-0.1	-0.1	-0.3	-8.3%	-0.3	-4.2%	0.1	1.5%
Professional Services	9.7	0.1	0.1	0.3	13.4%	0.2	4.3%	0.1	2.1%
Management Companies	3.7	0.0	0.0	0.0	0.0%	0.0	0.0%	0.0	0.0%
Administrative Support	14.2	0.1	-0.1	-0.2	-5.4%	0.1	1.4%	0.5	7.6%
Education and Healthcare	35.5	0.0	0.0	0.0	0.0%	0.2	1.1%	-0.2	-1.1%
Leisure and Hospitality	24.2	0.2	-0.1	0.0	0.0%	0.2	1.7%	0.5	4.3%
Other Services	10.4	-0.1	0.0	-0.2	-7.3%	-0.4	-7.3%	0.0	0.0%
Total Government	67.6	-0.2	0.0	0.0	0.0%	1.2	3.6%	-1.1	-3.3%
Federal Government	11.1	-0.1	-0.2	-0.1	-3.5%	1.0	20.8%	-1.1	-18.7%
State and Local Education	33.3	0.2	0.1	0.3	3.7%	0.2	1.2%	0.1	0.6%
Other State and Local	23.2	-0.1	-0.1	-0.1	-1.7%	0.1	0.9%	0.1	0.9%
Household Statistics									
Labor Force	407.8	0.5	0.8	1.3	1.3%	0.3	0.1%	2.0	1.0%
Household Employment	372.3	0.9	0.3	1.3	1.4%	3.5	1.9%	3.5	1.9%
Unemployment Rate	8.7%	-0.11%	0.11%	-0.03%		-0.79%		-0.42%	

The Fresno MSA is made up of Fresno County only now.