

**UCLA ANDERSON FORECAST DATA RELEASE**  
**SEASONALLY ADJUSTED REGIONAL JOB DATA FOR CALIFORNIA**  
**September 2005 Job Data Released on October 21, 2005**

Headline economic data announced for the U.S. economy are invariably published in seasonally adjusted form, and most of the statewide data are so adjusted as well. California is a very large economy, with many highly diverse regional economies. Unfortunately the regional data are not seasonally adjusted by state agencies. As a result, the local data are not amenable to analysis of recent short-run trends in the local economies, since in the absence of seasonal adjustment, analysts typically look at job levels and growth rates compared to those of a year earlier, in order to abstract from seasonal influences. This practice provides a relevant perspective on how regional economic growth has developed over the past year, but it says little or nothing about how regional growth has progressed in recent months.

To address these deficiencies in the local data, the UCLA Anderson Forecast will publish seasonally adjusted versions of employment data for the ten major metropolitan economies within California. On the 2nd Friday of each month, when the unadjusted regional data are released by EDD, our economists will compile seasonally adjusted versions of the major components of payroll employment, aggregate employment within both the household and payroll surveys, and unemployment rates. Soon after the EDD data release we will publish a summary table of our seasonally adjusted employment data for each of the covered metropolitan regions, along with summary charts.

The ten economic regions covered at this time will be Los Angeles County, Orange County, San Diego County, the Riverside-San Bernardino (Inland Empire) economic region, Ventura County, Santa Clara County (San Jose MSA), the San Francisco-San Mateo-Marín metro region (San Francisco MSA), the Alameda-Contra Costa (Oakland MSA) region, the Sacramento-Placer-El Dorado area (Sacramento MSA) and Fresno-Madera region (Fresno MSA).

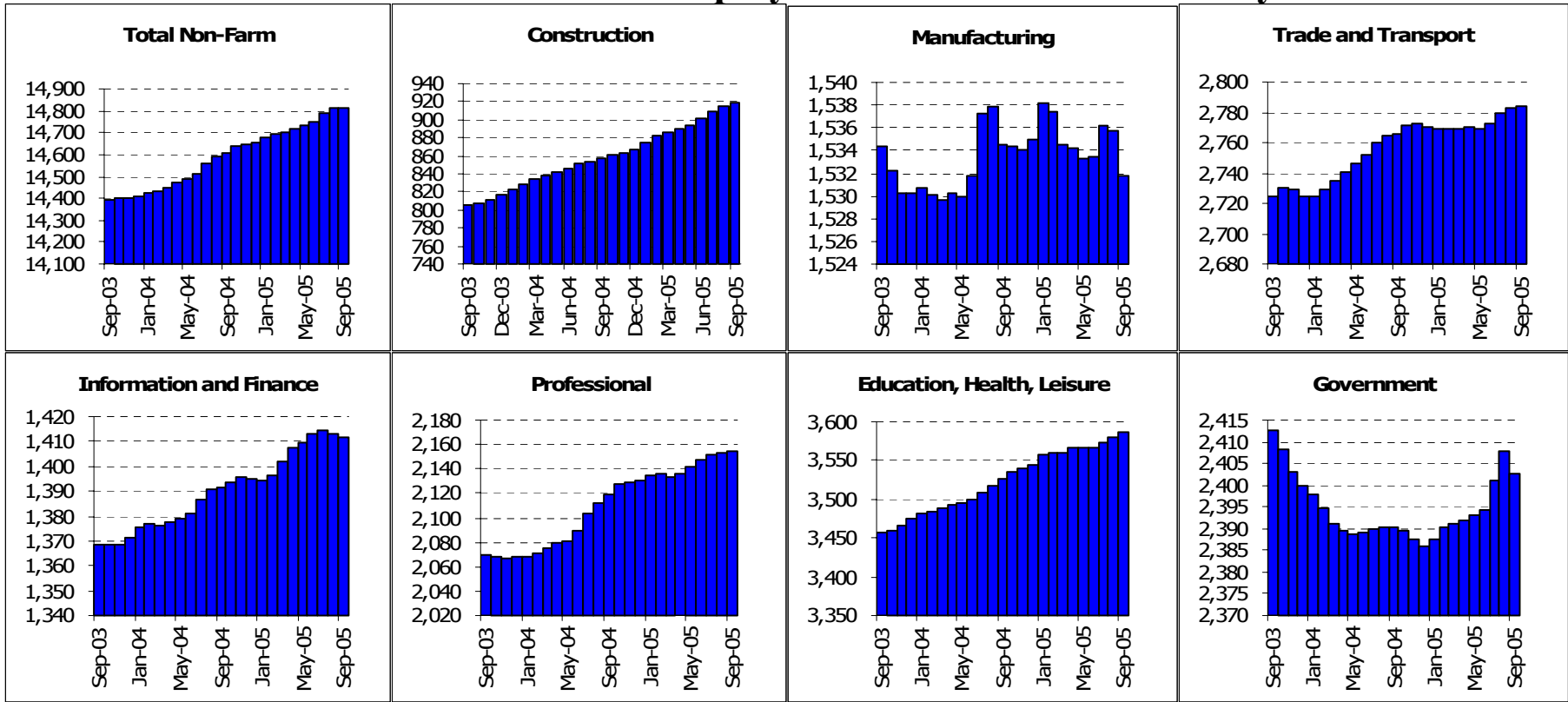
Any or all of these summary tables can be obtained through the Media Relations Office at the UCLA Anderson School of Management (call Hilary Rehder, 310-206-7707). For our economists' commentary on the data, please refer to the following contact list. If you are unable to reach one of economists please contact Hilary Rehder. For general information about the UCLA Anderson Forecast please call 310-825-1623.

Economist	Contact	Economist	Contact
Christopher Thornberg	310-794-6382 UCLA 310-739-3286 OFFICE	Michael Bazdarich	310-206-1132 UCLA 818-249-3450 OFFICE

## California Overview Payroll Employment

	Current	Monthly Change		Quarterly Change		Year-to-date 2005		Year-to-date 2004	
	Level	Aug-05	Jul-05	Quarterly Change		Year-to-date 2005		Year-to-date 2004	
	Sep-05	Sep-05	Aug-05	Abs.	%AR	Abs.	%AR	Abs.	%AR
California	14813.2	1.4	22.8	64.0	1.7%	161.9	1.5%	201.5	1.9%
Los Angeles	4027.1	-4.1	-0.7	1.0	0.1%	33.6	1.1%	13.9	0.5%
Orange County	1491.8	1.4	2.1	8.1	2.2%	21.3	1.9%	23.3	2.2%
Riverside	1179.9	2.1	4.6	11.3	3.9%	17.0	2.0%	34.6	4.1%
San Diego	1281.0	0.9	1.0	5.0	1.6%	15.9	1.7%	16.9	1.8%
Ventura	286.0	-0.5	0.1	-0.4	-0.6%	1.4	0.7%	-0.1	0.0%
Santa Barbara	171.8	-0.1	0.0	0.1	0.2%	2.8	2.2%	1.2	1.0%
Bakersfield	217.8	-0.1	1.1	2.0	3.8%	5.2	3.3%	4.4	2.8%
East Bay	1039.7	0.6	1.7	6.4	2.5%	15.7	2.0%	3.2	0.4%
San Francisco	945.9	-1.3	0.0	0.4	0.2%	4.9	0.7%	-0.3	0.0%
San Jose	861.6	1.5	1.6	4.9	2.3%	5.1	0.8%	0.9	0.1%
Sacramento	870.0	1.4	0.8	3.3	1.5%	7.4	1.1%	5.4	0.8%
Santa Rosa	184.2	-1.8	0.1	-1.3	-2.8%	-1.2	-0.9%	1.6	1.2%
Fresno	288.4	-0.7	-0.6	-1.6	-2.2%	0.7	0.3%	2.8	1.3%

# State of California: Employment Charts and Summary

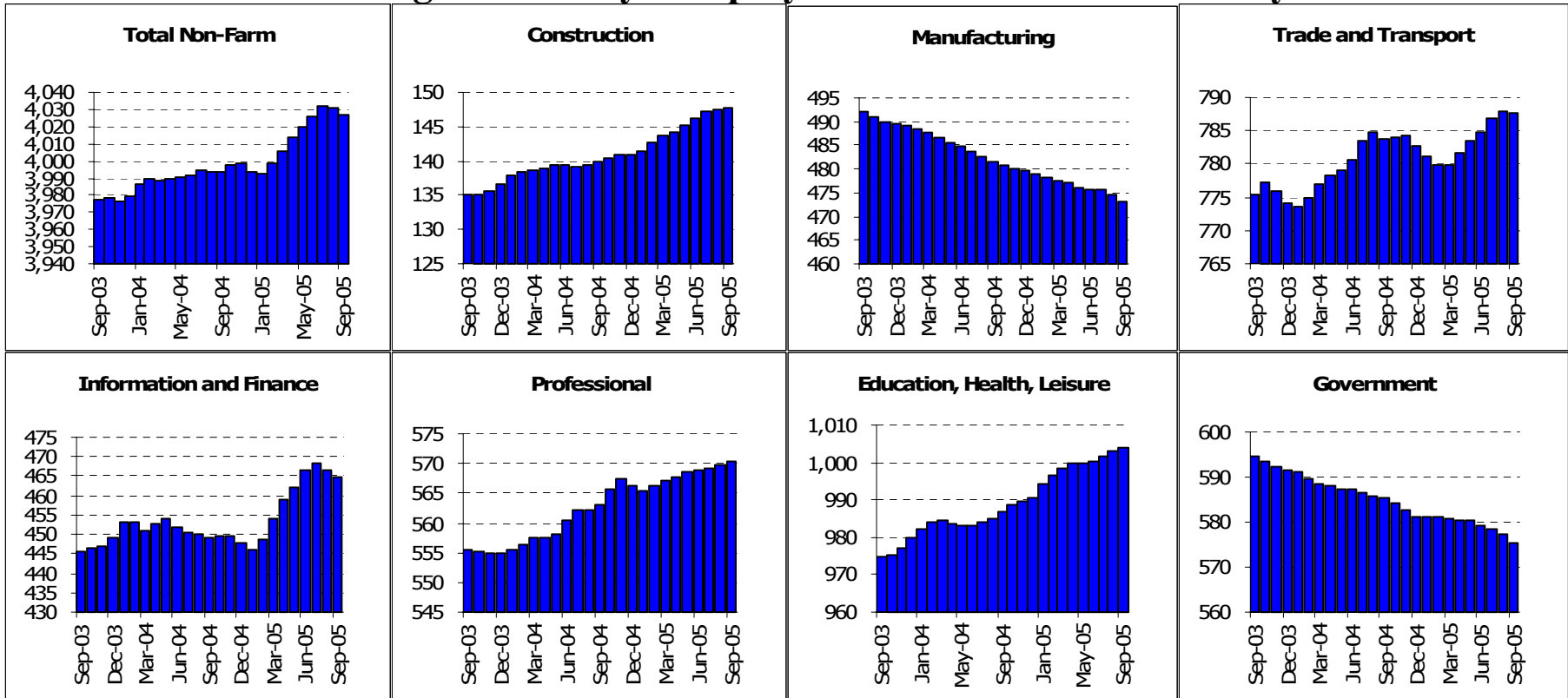


## State of California: Employment Tables (thousands)

	Current	Monthly Change		Quarterly Change		Year-to-date 2005		Year-to-date 2004	
	Level	Aug-05	Jul-05	Abs.	% AR	Abs.	% AR	Abs.	% AR
<b>Payroll Statistics</b>	Sep-05	Sep-05	Aug-05	Abs.	% AR	Abs.	% AR	Abs.	% AR
Total Non-Farm	14813.2	1.4	22.8	64.0	1.7%	161.9	1.5%	201.5	1.9%
Total Private	12410.7	6.8	15.9	55.7	1.8%	145.5	1.6%	210.8	2.3%
Construction	918.4	4.2	4.9	17.6	8.0%	51.2	7.9%	40.6	6.7%
Durable Manufacturing	984.4	0.1	1.1	3.2	1.3%	4.2	0.6%	11.6	1.6%
Non-Durable Manufacturing	547.4	-4.1	-1.5	-4.8	-3.4%	-7.3	-1.8%	-7.4	-1.7%
Wholesale Trade	660.5	0.1	0.2	1.0	0.6%	2.5	0.5%	8.3	1.7%
Retail Trade	1639.6	0.9	3.6	11.7	2.9%	14.3	1.2%	27.2	2.3%
Transportation and Utilities	483.6	-0.4	-0.3	-1.0	-0.8%	-3.1	-0.8%	6.1	1.7%
Information	489.3	-2.7	-3.1	-5.4	-4.3%	8.9	2.5%	1.8	0.5%
Financial Activities	922.7	1.8	1.4	4.6	2.0%	7.9	1.2%	18.4	2.8%
Professional Services	928.6	1.2	1.2	4.7	2.1%	15.1	2.2%	15.7	2.3%
Management Companies	229.6	-0.5	-0.3	-0.9	-1.6%	-1.1	-0.6%	-8.3	-4.6%
Administrative Support	996.8	0.9	0.7	4.4	1.8%	11.2	1.5%	44.1	6.4%
Education and Healthcare	1591.0	1.6	3.0	7.5	1.9%	17.7	1.5%	19.0	1.6%
Leisure and Hospitality	1484.6	3.9	4.2	11.2	3.1%	21.3	1.9%	29.6	2.8%
Other Services	510.3	0.2	0.7	1.4	1.1%	1.9	0.5%	2.6	0.7%
Total Government	2402.5	-5.3	6.9	8.3	1.4%	16.4	0.9%	-9.4	-0.5%
Federal Government	245.3	0.0	-0.5	-1.4	-2.3%	-2.0	-1.1%	-2.1	-1.1%
State and Local Education	1153.4	-5.5	6.6	7.6	2.7%	12.0	1.4%	0.2	0.0%
Other State and Local	1003.8	0.2	0.8	2.2	0.9%	6.5	0.9%	-7.5	-1.0%
<b>Household Statistics</b>									
Labor Force	17928.2	-12.7	47.6	91.2	2.1%	291.6	2.2%	151.7	1.2%
Household Employment	17004.2	-5.0	48.2	108.7	2.6%	405.9	3.3%	238.6	2.0%
Unemployment Rate	5.2%	-0.04%	-0.02%	-0.12%		-0.73%		-0.55%	

The California EDD also releases seasonally adjusted data for California. As the EDD uses a different algorithm for this process, their numbers may differ from ours on a month to month basis.

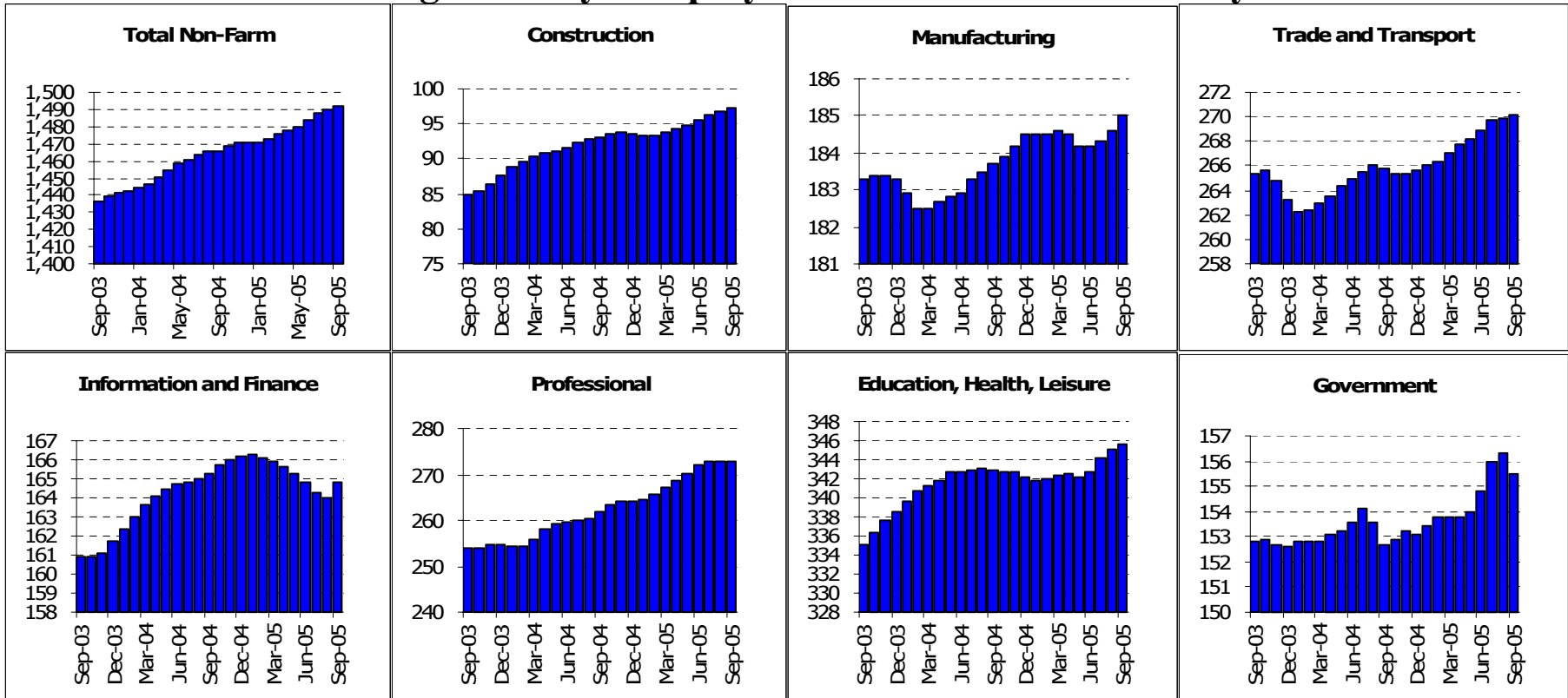
# Los Angeles County: Employment Charts and Summary



## Los Angeles County: Employment Tables (thousands)

	Current	Monthly Change		Quarterly Change		Year-to-date 2005		Year-to-date 2004	
	Level	Aug-05	Jul-05	Abs.	%AR	Abs.	%AR	Abs.	%AR
<b>Payroll Statistics</b>	Sep-05	Sep-05	Aug-05	Abs.	%AR	Abs.	%AR	Abs.	%AR
Total Non-Farm	4027.1	-4.1	-0.7	1.0	0.1%	33.6	1.1%	13.9	0.5%
Total Private	3451.9	-2.0	0.4	5.1	0.6%	39.7	1.6%	20.0	0.8%
Construction	147.7	0.3	0.3	1.5	4.2%	6.9	6.6%	3.3	3.2%
Durable Manufacturing	264.2	-0.8	-0.7	-1.9	-2.8%	-2.7	-1.3%	-1.7	-0.8%
Non-Durable Manufacturing	209.0	-0.5	-0.3	-0.5	-1.0%	-3.5	-2.2%	-6.3	-3.8%
Wholesale Trade	212.7	0.1	0.0	0.2	0.4%	-0.9	-0.6%	0.5	0.3%
Retail Trade	410.3	-0.2	0.5	1.9	1.9%	6.0	2.0%	5.8	1.9%
Transportation and Utilities	164.7	0.0	0.4	0.9	2.2%	1.8	1.5%	3.3	2.8%
Information	218.6	-1.9	-2.1	-2.7	-4.8%	15.4	10.2%	-3.0	-1.9%
Financial Activities	246.3	0.3	0.2	0.9	1.5%	1.9	1.0%	3.0	1.7%
Professional Services	240.6	-0.4	0.1	0.2	0.3%	1.7	0.9%	4.6	2.6%
Management Companies	71.0	0.2	0.1	0.2	1.1%	0.6	1.1%	-4.0	-7.1%
Administrative Support	258.8	0.7	0.4	1.2	1.9%	1.6	0.8%	7.5	4.1%
Education and Healthcare	475.6	0.6	0.5	1.6	1.4%	4.4	1.2%	2.5	0.7%
Leisure and Hospitality	382.3	0.4	0.8	2.1	2.2%	8.2	2.9%	4.9	1.8%
Other Services	146.0	-0.2	0.0	0.0	0.0%	0.6	0.6%	-0.4	-0.4%
Total Government	575.2	-2.1	-1.0	-4.0	-2.7%	-6.1	-1.4%	-6.1	-1.4%
Federal Government	53.4	-0.1	-0.2	-0.6	-4.4%	-0.3	-0.7%	0.0	0.0%
State and Local Education	286.8	-1.2	-0.3	-2.1	-2.9%	-5.9	-2.7%	-5.3	-2.4%
Other State and Local	235.0	-0.7	-0.4	-1.3	-2.2%	0.2	0.1%	-0.9	-0.5%
<b>Household Statistics</b>									
Labor Force	4876.7	-14.0	-2.1	-23.2	-1.9%	37.3	1.0%	47.0	1.3%
Household Employment	4654.7	-2.1	10.4	16.0	1.4%	122.5	3.6%	64.6	1.9%
Unemployment Rate	4.6%	-0.23%	-0.25%	-0.78%		-1.80%		-0.43%	

# Orange County: Employment Charts and Summary

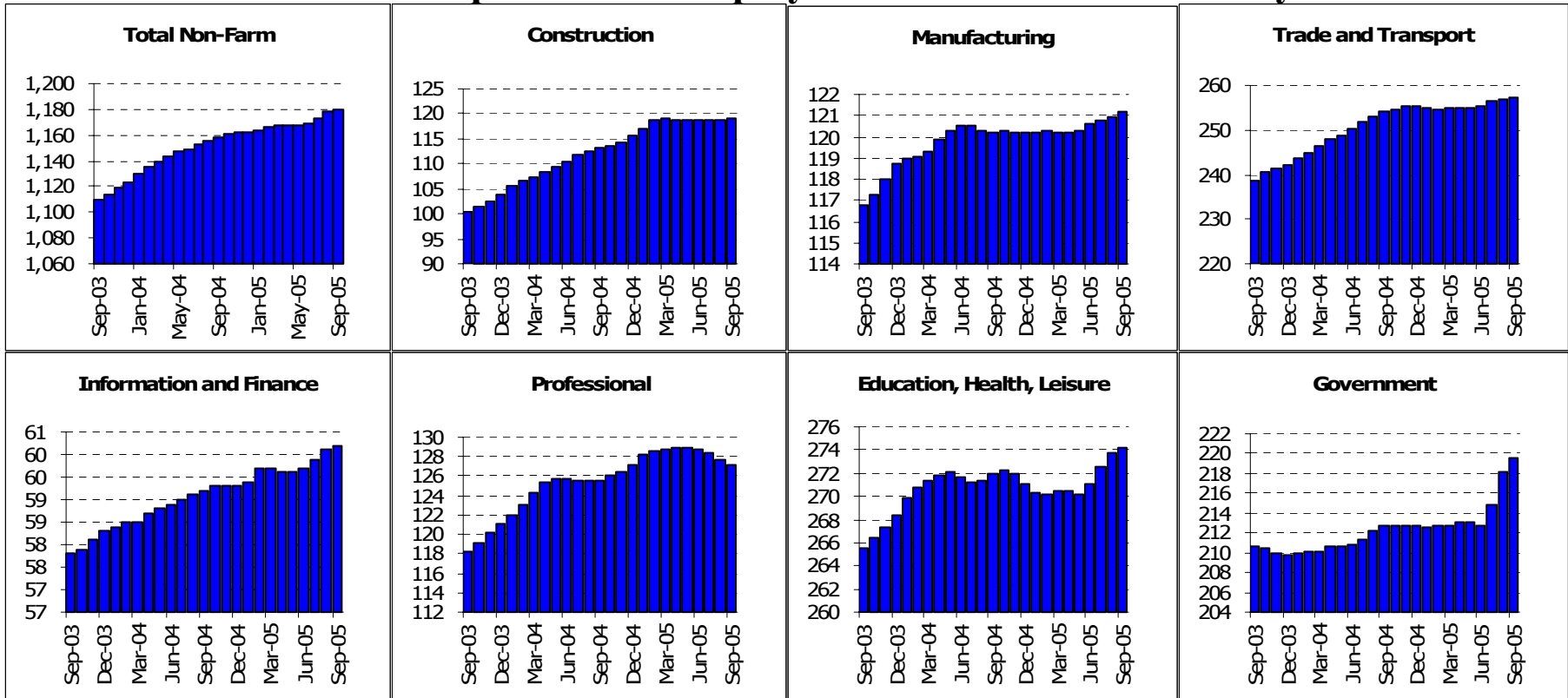


## Orange County: Employment Tables (thousands)

	Current	Monthly Change		Quarterly Change		Year-to-date 2005		Year-to-date 2004	
	Level	Aug-05	Jul-05	Abs.	% AR	Abs.	% AR	Abs.	% AR
<b>Payroll Statistics</b>	Sep-05	Sep-05	Aug-05	Abs.	% AR	Abs.	% AR	Abs.	% AR
Total Non-Farm	1491.8	1.4	2.1	8.1	2.2%	21.3	1.9%	23.3	2.2%
Total Private	1336.3	2.3	1.7	7.4	2.2%	19.0	1.9%	23.2	2.4%
Construction	97.2	0.5	0.5	1.7	7.3%	3.6	5.2%	5.4	8.3%
Durable Manufacturing	129.2	0.4	0.4	1.2	3.8%	1.6	1.7%	0.4	0.4%
Non-Durable Manufacturing	55.8	0.1	-0.2	-0.3	-2.1%	-0.9	-2.1%	-0.1	-0.2%
Wholesale Trade	84.0	0.6	0.4	1.3	6.4%	1.9	3.1%	0.1	0.2%
Retail Trade	157.2	-0.2	-0.2	0.0	0.0%	3.5	3.0%	2.6	2.3%
Transportation and Utilities	28.9	-0.1	0.0	-0.1	-1.4%	-0.3	-1.4%	-0.1	-0.5%
Information	32.5	0.2	0.1	0.3	3.8%	-0.7	-2.8%	-1.0	-3.9%
Financial Activities	132.3	0.6	-0.4	-0.3	-0.9%	-0.7	-0.7%	4.6	4.8%
Professional Services	101.0	0.6	0.4	1.5	6.2%	3.5	4.8%	1.6	2.2%
Management Companies	31.0	0.0	-0.1	-0.2	-2.5%	0.2	0.9%	0.1	0.4%
Administrative Support	140.9	-0.3	-0.3	-0.2	-0.6%	4.9	4.8%	5.4	5.7%
Education and Healthcare	131.9	0.0	0.4	1.0	3.1%	1.3	1.3%	1.1	1.1%
Leisure and Hospitality	165.2	0.4	0.5	1.3	3.2%	0.9	0.7%	3.1	2.6%
Other Services	48.5	0.1	0.1	0.5	4.2%	1.2	3.4%	0.1	0.3%
Total Government	155.5	-0.8	0.3	0.7	1.8%	2.4	2.1%	0.1	0.1%
Federal Government	11.4	0.0	0.1	0.1	3.6%	-0.1	-1.2%	-0.1	-1.1%
State and Local Education	93.0	-0.4	0.4	1.0	4.4%	2.7	4.0%	0.3	0.4%
Other State and Local	51.1	-0.4	0.0	-0.3	-2.3%	-0.1	-0.3%	0.0	0.0%
<b>Household Statistics</b>									
Labor Force	1640.8	2.6	7.3	18.5	4.6%	43.0	3.6%	24.0	2.0%
Household Employment	1580.2	2.4	5.6	16.0	4.2%	46.0	4.0%	30.7	2.7%
Unemployment Rate	3.7%	0.01%	0.09%	0.11%		-0.29%		-0.49%	



# Inland Empire MSA: Employment Charts and Summary

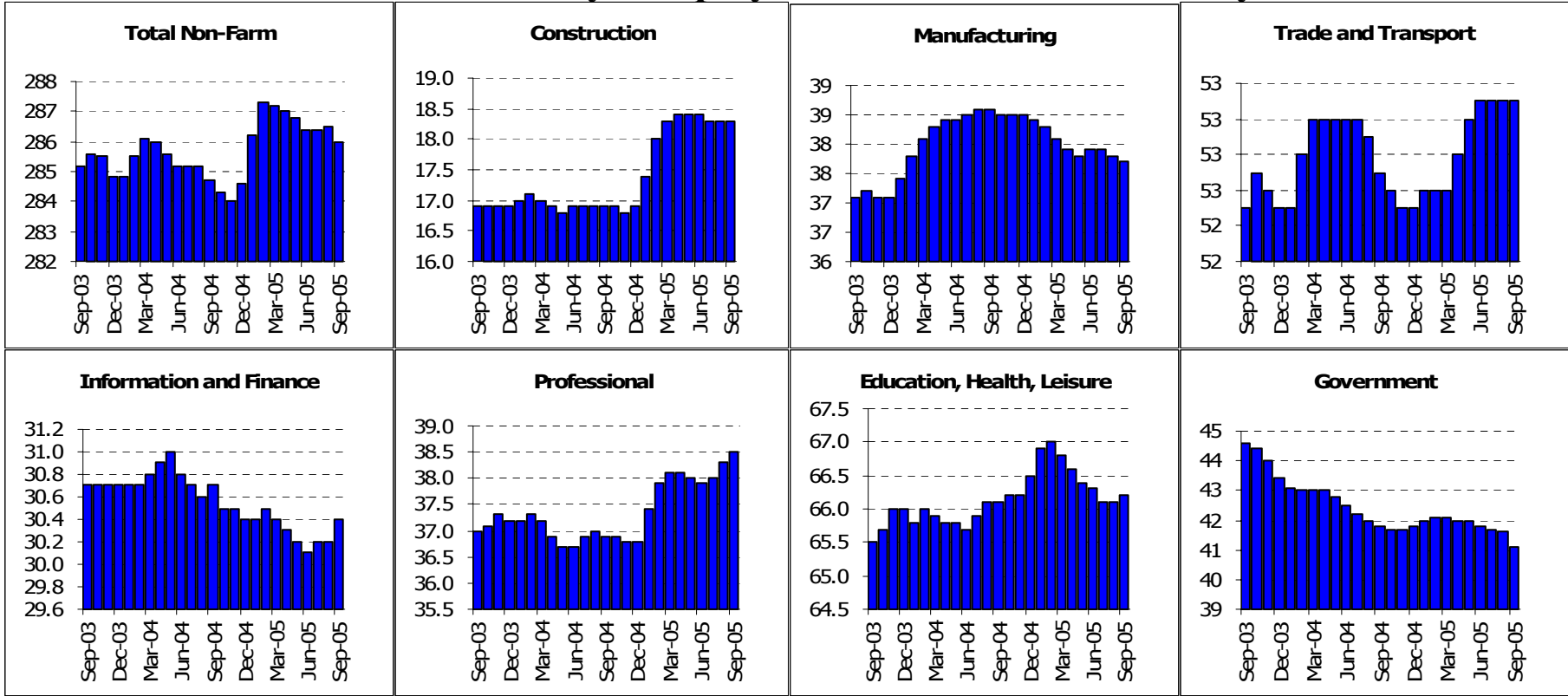


## Inland Empire MSA: Employment Tables (thousands)

	Current	Monthly Change		Quarterly Change		Year-to-date 2005		Year-to-date 2004	
	Level	Aug-05	Jul-05	Abs.	% AR	Abs.	% AR	Abs.	% AR
<b>Payroll Statistics</b>	Sep-05	Sep-05	Aug-05	Abs.	% AR	Abs.	% AR	Abs.	% AR
Total Non-Farm	1179.9	2.1	4.6	11.3	3.9%	17.0	2.0%	34.6	4.1%
Total Private	960.4	0.8	1.2	4.6	1.9%	10.4	1.5%	31.6	4.6%
Construction	119.0	0.3	-0.1	0.1	0.3%	3.4	3.9%	9.3	12.1%
Durable Manufacturing	86.5	0.3	0.2	0.6	2.8%	0.5	0.8%	1.7	2.7%
Non-Durable Manufacturing	34.7	0.0	0.0	0.0	0.0%	0.5	2.0%	-0.2	-0.8%
Wholesale Trade	45.3	0.2	0.0	0.1	0.9%	-0.2	-0.6%	1.5	4.6%
Retail Trade	155.5	0.4	0.5	1.7	4.5%	2.0	1.7%	6.8	6.2%
Transportation and Utilities	56.6	-0.1	0.1	0.1	0.7%	1.0	2.4%	3.5	9.1%
Information	13.5	0.0	0.0	-0.1	-2.9%	-0.1	-1.0%	-0.3	-2.9%
Financial Activities	46.7	0.1	0.2	0.6	5.3%	1.0	2.9%	1.2	3.6%
Professional Services	32.5	0.2	0.0	0.3	3.8%	1.1	4.7%	2.6	12.1%
Management Companies	11.6	-0.1	0.0	-0.2	-6.6%	0.1	1.2%	0.2	2.4%
Administrative Support	83.1	-0.6	-0.6	-1.6	-7.3%	-1.2	-1.9%	1.5	2.5%
Education and Healthcare	117.9	0.3	0.0	0.1	0.3%	0.7	0.8%	0.3	0.3%
Leisure and Hospitality	116.5	0.0	1.0	2.6	9.4%	1.1	1.3%	3.4	4.0%
Other Services	39.8	0.2	0.1	0.5	5.2%	1.3	4.5%	-0.1	-0.3%
Total Government	219.5	1.3	3.4	6.8	13.4%	6.7	4.2%	2.9	1.8%
Federal Government	18.0	0.1	0.2	0.5	11.9%	1.1	8.8%	0.0	0.0%
State and Local Education	112.4	1.2	3.2	6.1	25.0%	3.8	4.7%	2.0	2.5%
Other State and Local	89.1	0.1	0.1	0.3	1.4%	2.0	3.1%	0.8	1.3%
<b>Household Statistics</b>									
Labor Force	1708.8	4.0	11.2	25.6	6.2%	44.5	3.6%	44.6	3.7%
Household Employment	1623.2	3.5	9.4	23.3	6.0%	49.3	4.2%	51.7	4.6%
Unemployment Rate	5.0%	0.02%	0.07%	0.06%		-0.42%		-0.59%	

The Inland Empire is made up of Riverside and San Bernardino counties

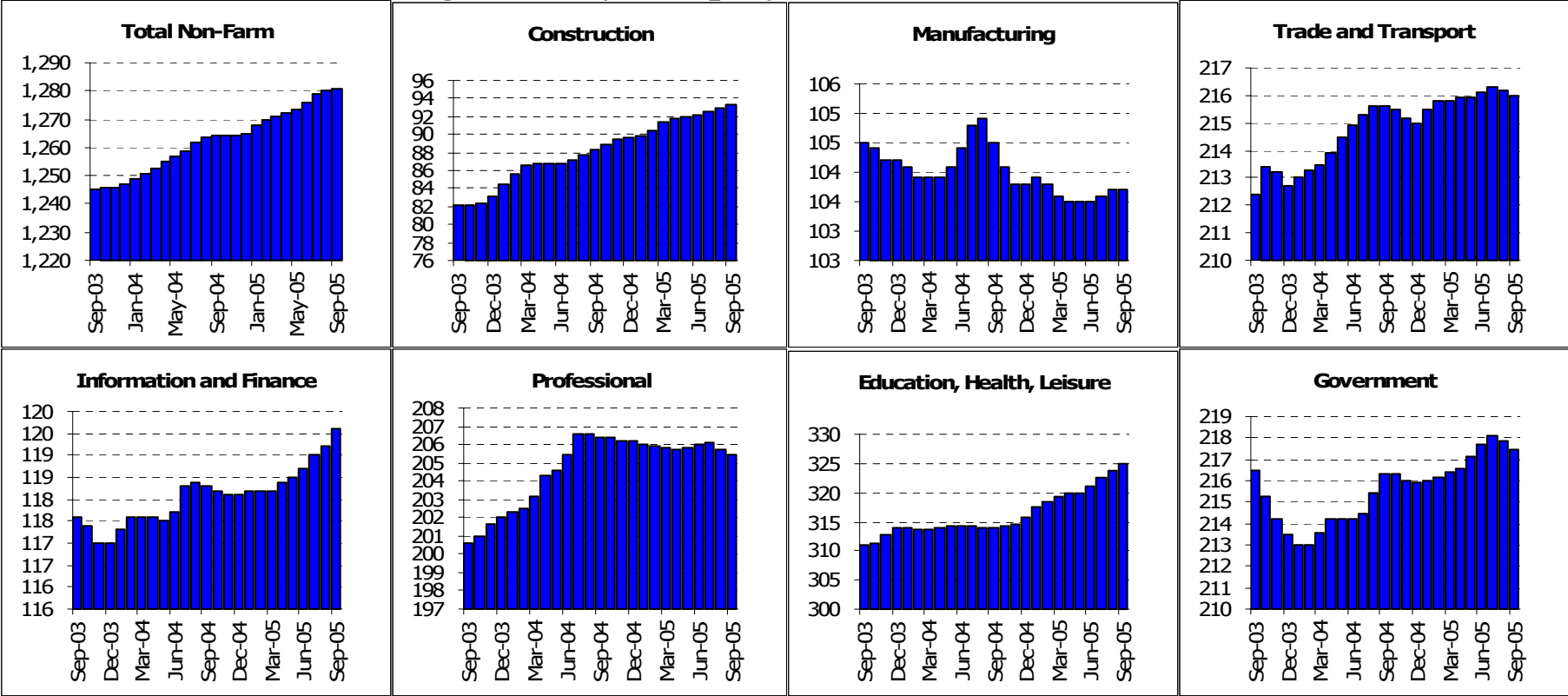
# Ventura County: Employment Charts and Summary



## Ventura County: Employment Tables (thousands)

	Current	Monthly Change		Quarterly Change		Year-to-date 2005		Year-to-date 2004	
	Level	Aug-05	Jul-05	Abs.	% AR	Abs.	% AR	Abs.	% AR
<b>Payroll Statistics</b>	Sep-05	Sep-05	Aug-05	Abs.	% AR	Abs.	% AR	Abs.	% AR
Total Non-Farm	286.0	-0.5	0.1	-0.4	-0.6%	1.4	0.7%	-0.1	0.0%
Total Private	244.9	0.0	0.2	0.3	0.5%	2.2	1.2%	1.4	0.8%
Construction	18.3	0.0	0.0	-0.1	-2.2%	1.4	11.2%	0.0	0.0%
Durable Manufacturing	24.1	0.0	0.0	0.0	0.0%	-0.2	-1.1%	0.5	2.8%
Non-Durable Manufacturing	13.6	-0.1	-0.1	-0.2	-5.7%	-0.6	-5.6%	0.9	9.1%
Wholesale Trade	12.0	0.1	0.1	0.2	7.0%	0.1	1.1%	0.4	4.6%
Retail Trade	35.6	-0.1	0.0	-0.1	-1.1%	0.7	2.7%	-0.1	-0.4%
Transportation and Utilities	5.5	0.0	0.0	-0.1	-7.0%	0.0	0.0%	0.0	0.0%
Information	6.9	0.1	0.0	0.1	6.0%	0.3	6.1%	-0.2	-3.8%
Financial Activities	23.5	0.1	0.0	0.2	3.5%	-0.3	-1.7%	0.2	1.1%
Professional Services	14.2	0.1	0.0	0.2	5.8%	0.5	4.9%	0.3	2.9%
Management Companies	3.7	0.1	0.1	0.2	24.9%	0.3	11.9%	-0.4	-13.4%
Administrative Support	20.6	0.1	0.1	0.2	4.0%	0.9	6.1%	-0.3	-2.0%
Education and Healthcare	27.9	0.0	0.0	-0.1	-1.4%	-0.2	-0.9%	-0.2	-1.0%
Leisure and Hospitality	28.0	0.0	-0.1	-0.2	-2.8%	-0.3	-1.4%	0.5	2.4%
Other Services	10.3	0.1	0.1	0.2	8.2%	0.2	2.6%	-0.2	-2.6%
Total Government	41.1	-0.5	-0.1	-0.7	-6.5%	-0.7	-2.2%	-1.6	-4.9%
Federal Government	7.4	0.0	-0.1	-0.1	-5.2%	-0.1	-1.8%	0.0	0.0%
State and Local Education	17.7	-0.4	-0.1	-0.7	-14.4%	-1.1	-7.7%	-1.0	-6.8%
Other State and Local	16.0	0.0	0.1	0.1	2.5%	0.0	0.0%	-0.6	-4.8%
<b>Household Statistics</b>									
Labor Force	423.3	-0.3	1.1	1.8	1.7%	6.9	2.2%	2.7	0.9%
Household Employment	403.6	-0.7	1.2	1.8	1.8%	8.1	2.7%	4.6	1.6%
Unemployment Rate	4.7%	0.10%	-0.04%	-0.02%		-0.37%		-0.49%	

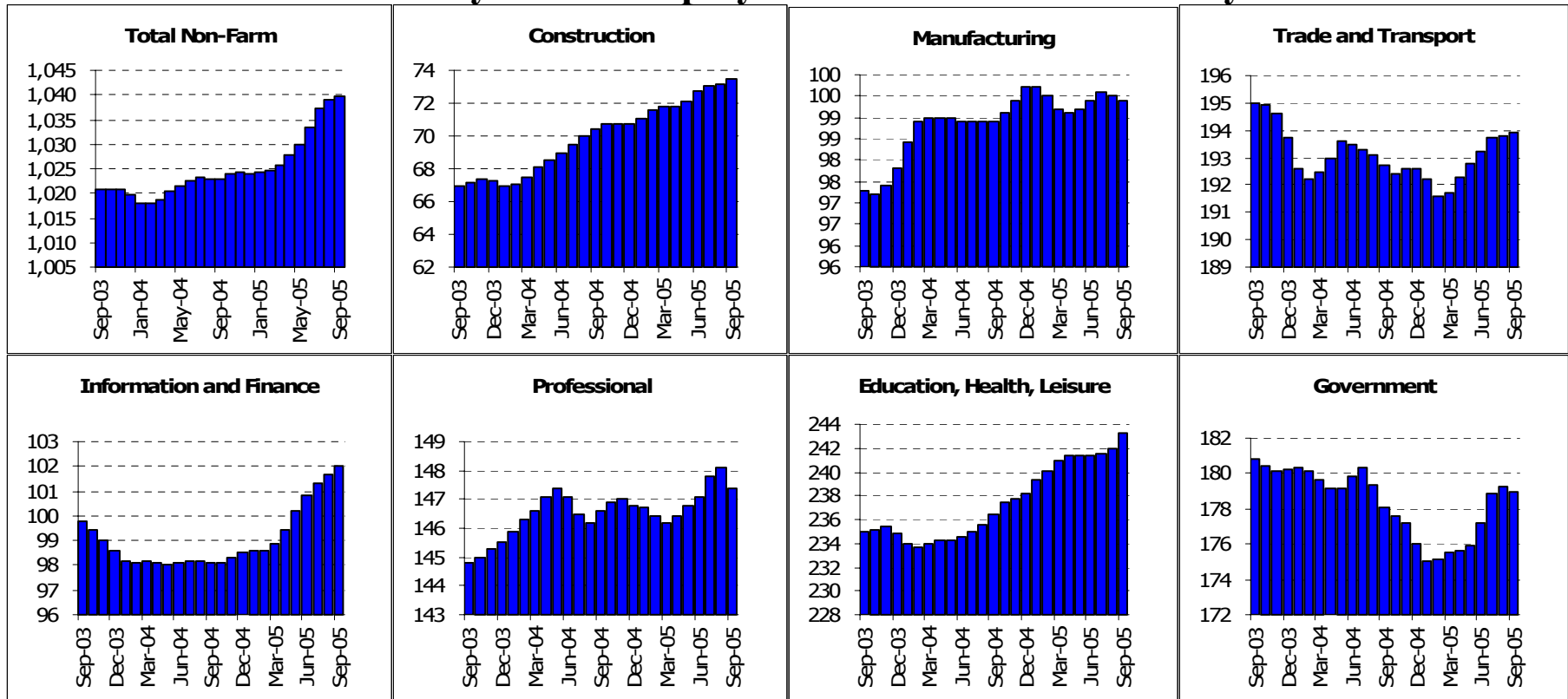
# San Diego County: Employment Charts and Summary



## San Diego County: Employment Tables (thousands)

	Current	Monthly Change		Quarterly Change		Year-to-date 2005		Year-to-date 2004	
	Level	Aug-05	Jul-05	Abs.	%AR	Abs.	%AR	Abs.	%AR
<b>Payroll Statistics</b>	Sep-05	Sep-05	Aug-05	Abs.	%AR	Abs.	%AR	Abs.	%AR
Total Non-Farm	1281.0	0.9	1.0	5.0	1.6%	15.9	1.7%	16.9	1.8%
Total Private	1063.5	1.4	1.1	5.2	2.0%	14.4	1.8%	14.1	1.8%
Construction	93.4	0.5	0.3	1.2	5.3%	3.8	5.7%	5.2	8.4%
Durable Manufacturing	77.9	0.0	0.0	0.1	0.5%	0.2	0.3%	0.5	0.9%
Non-Durable Manufacturing	25.8	0.1	0.0	0.1	1.6%	-0.2	-1.0%	-0.2	-1.0%
Wholesale Trade	41.9	0.0	-0.1	-0.2	-1.9%	-0.2	-0.6%	0.0	0.0%
Retail Trade	145.7	-0.2	-0.1	0.0	0.0%	1.8	1.7%	2.2	2.1%
Transportation and Utilities	28.4	0.1	0.1	0.2	2.9%	-0.1	-0.5%	0.6	2.9%
Information	36.8	0.1	0.0	0.1	1.1%	0.5	1.8%	0.4	1.5%
Financial Activities	82.8	0.3	0.2	0.8	4.0%	1.0	1.6%	0.9	1.5%
Professional Services	99.4	0.0	-0.1	0.0	0.0%	0.0	0.0%	-1.6	-2.1%
Management Companies	18.1	-0.1	0.0	-0.1	-2.2%	0.0	0.0%	-0.3	-2.1%
Administrative Support	87.9	-0.1	-0.2	-0.4	-1.8%	-0.8	-1.2%	6.2	10.3%
Education and Healthcare	124.6	0.1	0.6	1.6	5.3%	3.3	3.6%	-2.3	-2.5%
Leisure and Hospitality	150.7	0.8	0.4	1.7	4.6%	4.9	4.5%	1.5	1.4%
Other Services	49.7	0.2	0.2	0.6	5.0%	1.1	3.0%	0.8	2.3%
Total Government	217.5	-0.4	-0.2	-0.2	-0.4%	1.6	1.0%	2.8	1.8%
Federal Government	38.7	0.0	0.0	-0.1	-1.0%	-0.3	-1.0%	-0.3	-1.0%
State and Local Education	99.6	-0.7	-0.2	-0.4	-1.6%	1.1	1.5%	1.9	2.6%
Other State and Local	79.2	0.3	0.1	0.5	2.6%	0.9	1.5%	1.3	2.3%
<b>Household Statistics</b>									
Labor Force	1536.9	1.6	4.3	13.3	3.5%	37.5	3.3%	21.5	1.9%
Household Employment	1472.1	1.1	3.5	11.4	3.2%	39.9	3.7%	27.9	2.7%
Unemployment Rate	4.2%	0.03%	0.04%	0.09%		-0.27%		-0.50%	

# East Bay MSA: Employment Charts and Summary



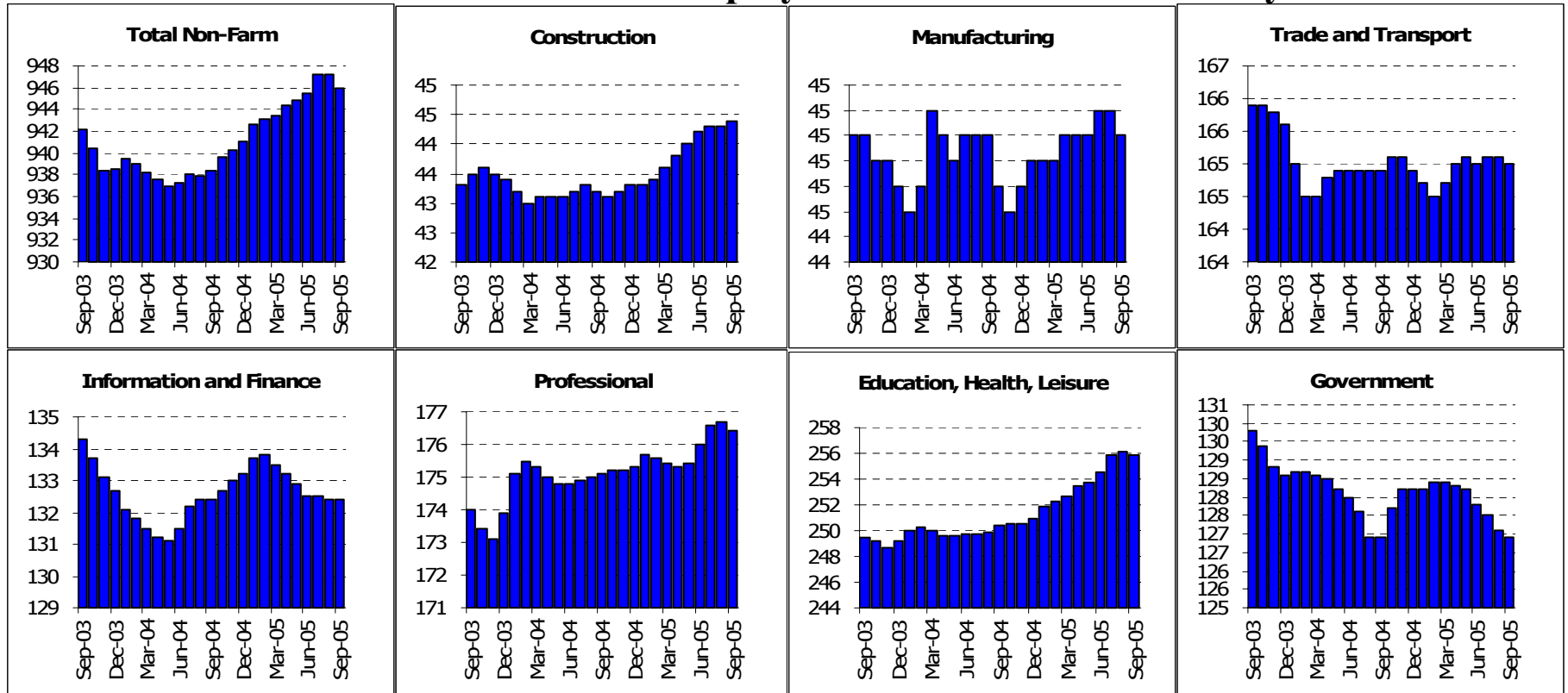
## East Bay MSA: Employment Tables (thousands)

	Current	Monthly Change		Quarterly Change		Year-to-date 2005		Year-to-date 2004	
	Level	Aug-05	Jul-05	Abs.	%AR	Abs.	%AR	Abs.	%AR
<b>Payroll Statistics</b>	Sep-05	Sep-05	Aug-05	Abs.	%AR	Abs.	%AR	Abs.	%AR
Total Non-Farm	1039.7	0.6	1.7	6.4	2.5%	15.7	2.0%	3.2	0.4%
Total Private	860.7	0.9	1.3	4.6	2.2%	12.7	2.0%	5.3	0.8%
Construction	73.5	0.3	0.1	0.8	4.5%	2.8	5.3%	3.1	6.2%
Durable Manufacturing	62.4	-0.3	-0.2	-0.5	-3.1%	-1.2	-2.5%	1.4	3.0%
Non-Durable Manufacturing	37.0	0.2	0.2	0.6	6.8%	1.0	3.7%	-0.3	-1.1%
Wholesale Trade	48.4	0.0	0.1	0.2	1.7%	-0.3	-0.8%	-0.4	-1.1%
Retail Trade	110.8	0.1	0.1	0.3	1.1%	1.5	1.8%	0.0	0.0%
Transportation and Utilities	34.7	0.0	0.1	0.3	3.5%	0.7	2.8%	-0.6	-2.3%
Information	30.8	0.1	0.1	0.3	4.0%	0.5	2.2%	-1.0	-4.2%
Financial Activities	71.2	0.2	0.3	0.9	5.2%	3.0	5.9%	0.5	1.0%
Professional Services	70.5	0.1	0.1	0.3	1.7%	0.7	1.3%	0.5	1.0%
Management Companies	21.4	0.1	0.2	0.3	5.8%	0.4	2.5%	-0.6	-3.6%
Administrative Support	55.5	-0.9	0.1	-0.3	-2.1%	-0.5	-1.2%	1.2	3.0%
Education and Healthcare	124.4	0.9	0.4	1.8	6.0%	4.7	5.3%	1.3	1.5%
Leisure and Hospitality	82.7	0.6	0.2	0.6	3.0%	1.1	1.8%	0.1	0.2%
Other Services	36.1	-0.2	-0.3	-0.6	-6.4%	-0.8	-2.9%	0.1	0.4%
Total Government	179.0	-0.3	0.4	1.8	4.1%	3.0	2.3%	-2.1	-1.6%
Federal Government	17.1	0.2	0.0	0.2	4.8%	0.1	0.8%	-0.7	-5.2%
State and Local Education	87.4	-0.4	0.4	1.6	7.7%	4.2	6.8%	1.0	1.6%
Other State and Local	74.5	0.1	0.0	0.1	0.5%	-1.2	-2.1%	-2.4	-4.0%
<b>Household Statistics</b>									
Labor Force	1292.1	1.2	5.7	13.7	4.4%	29.8	3.2%	-2.6	-0.3%
Household Employment	1228.8	1.0	3.7	11.1	3.7%	34.8	3.9%	7.9	0.9%
Unemployment Rate	4.9%	0.01%	0.13%	0.15%		-0.51%		-0.82%	

East Bay is also known as the Oakland MSA. It is made up of Alameda and Contra Costa counties.



# San Francisco MSA: Employment Charts and Summary

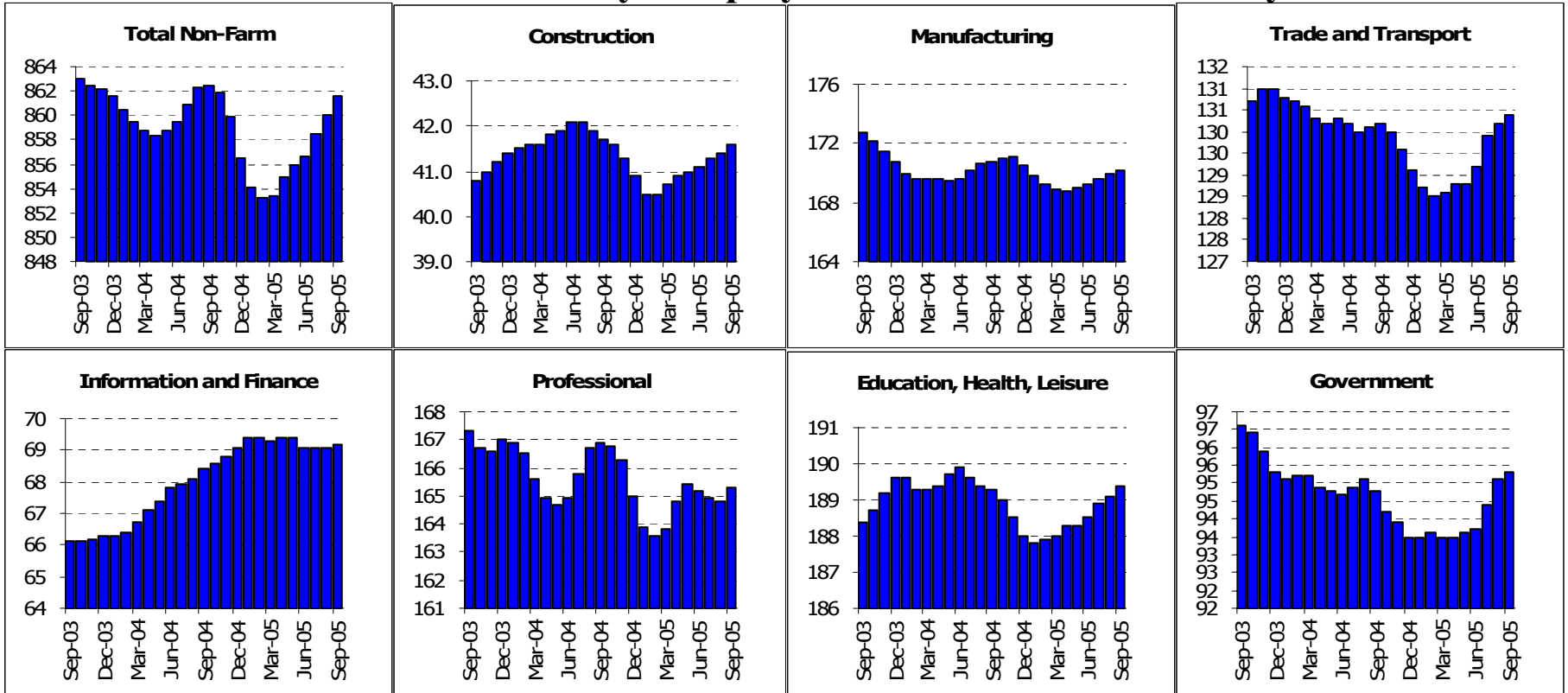


## San Francisco MSA: Employment Tables (thousands)

	Current	Monthly Change		Quarterly Change		Year-to-date 2005		Year-to-date 2004	
	Level	Aug-05	Jul-05	Abs.	%AR	Abs.	%AR	Abs.	%AR
<b>Payroll Statistics</b>	Sep-05	Sep-05	Aug-05	Abs.	%AR	Abs.	%AR	Abs.	%AR
Total Non-Farm	945.9	-1.3	0.0	0.4	0.2%	4.9	0.7%	-0.3	0.0%
Total Private	819.0	-1.1	0.4	1.4	0.7%	6.2	1.0%	1.4	0.2%
Construction	44.4	0.1	0.0	0.2	1.8%	1.1	3.4%	-0.3	-0.9%
Durable Manufacturing	22.1	0.0	-0.1	-0.1	-1.8%	-0.3	-1.8%	-0.1	-0.6%
Non-Durable Manufacturing	22.7	-0.1	0.1	0.1	1.8%	0.6	3.6%	0.2	1.2%
Wholesale Trade	26.6	-0.1	0.0	-0.2	-3.0%	0.0	0.0%	-0.3	-1.5%
Retail Trade	93.8	0.0	0.0	0.1	0.4%	0.7	1.0%	0.2	0.3%
Transportation and Utilities	44.6	0.1	0.1	0.1	0.9%	-0.1	-0.3%	-0.6	-1.8%
Information	42.0	-0.2	-0.3	-0.7	-6.4%	-1.8	-5.4%	-0.8	-2.4%
Financial Activities	90.4	0.2	0.2	0.6	2.7%	1.0	1.5%	0.5	0.8%
Professional Services	99.6	0.2	0.1	0.5	2.0%	0.5	0.7%	1.8	2.5%
Management Companies	20.9	-0.2	-0.1	-0.4	-7.3%	-0.6	-3.7%	-1.9	-10.8%
Administrative Support	55.9	-0.2	0.1	0.4	2.9%	1.1	2.7%	1.5	3.8%
Education and Healthcare	102.3	0.1	0.3	0.9	3.6%	2.3	3.1%	1.0	1.3%
Leisure and Hospitality	116.6	-0.4	0.1	0.3	1.0%	2.1	2.5%	0.7	0.8%
Other Services	36.9	-0.1	0.0	0.1	1.1%	0.5	1.8%	-0.5	-1.8%
Total Government	126.9	-0.2	-0.4	-0.9	-2.8%	-1.3	-1.3%	-1.7	-1.8%
Federal Government	21.2	0.0	0.0	-0.1	-1.9%	-0.5	-3.1%	-0.2	-1.2%
State and Local Education	46.2	-0.3	-0.7	-1.5	-12.0%	-1.8	-5.0%	-1.5	-4.1%
Other State and Local	59.5	0.2	0.3	0.8	5.6%	1.2	2.8%	-0.1	-0.2%
<b>Household Statistics</b>									
Labor Force	936.8	0.1	2.8	6.9	3.0%	16.0	2.3%	-1.6	-0.2%
Household Employment	894.4	-0.5	1.7	4.9	2.2%	19.3	3.0%	5.4	0.8%
Unemployment Rate	4.5%	0.06%	0.10%	0.18%		-0.44%		-0.75%	

The San Francisco MSA includes Marin, San Francisco and San Mateo counties

# Santa Clara County: Employment Charts and Summary

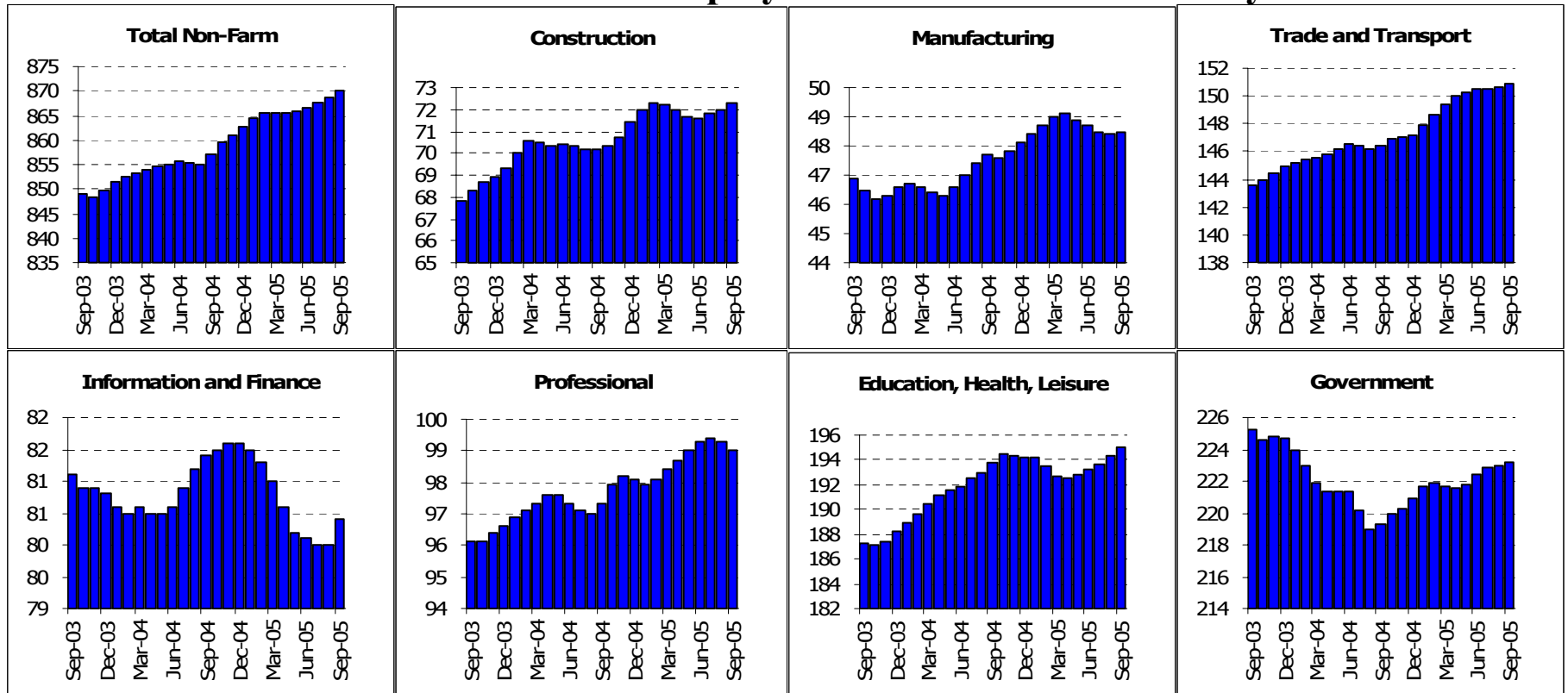


## Santa Clara County: Employment Tables (thousands)

	Current	Monthly Change		Quarterly Change		Year-to-date 2005		Year-to-date 2004	
	Level	Aug-05	Jul-05	Abs.	% AR	Abs.	% AR	Abs.	% AR
<b>Payroll Statistics</b>	Sep-05	Sep-05	Aug-05	Abs.	% AR	Abs.	% AR	Abs.	% AR
Total Non-Farm	861.6	1.5	1.6	4.9	2.3%	5.1	0.8%	0.9	0.1%
Total Private	766.3	1.4	0.8	3.4	1.8%	3.4	0.6%	1.4	0.2%
Construction	41.6	0.2	0.1	0.5	5.0%	0.7	2.3%	0.3	1.0%
Durable Manufacturing	158.0	0.3	0.2	0.8	2.1%	-0.1	-0.1%	0.1	0.1%
Non-Durable Manufacturing	12.2	0.1	0.0	0.3	10.5%	-0.1	-1.1%	-0.2	-2.2%
Wholesale Trade	35.5	0.3	0.2	0.7	8.3%	0.9	3.5%	0.2	0.8%
Retail Trade	82.0	0.0	0.1	0.5	2.5%	1.3	2.2%	-0.4	-0.6%
Transportation and Utilities	12.9	0.0	0.0	0.0	0.0%	-0.5	-4.9%	-0.5	-4.8%
Information	34.0	0.0	0.1	0.1	1.2%	0.3	1.2%	1.7	7.2%
Financial Activities	35.2	0.1	-0.1	0.0	0.0%	-0.2	-0.8%	0.4	1.5%
Professional Services	95.8	0.6	0.1	0.8	3.4%	-0.4	-0.6%	-1.7	-2.3%
Management Companies	14.1	-0.1	-0.2	-0.5	-13.0%	-1.1	-9.5%	-0.1	-0.9%
Administrative Support	55.4	0.0	0.0	-0.1	-0.7%	1.8	4.5%	1.9	4.8%
Education and Healthcare	96.5	0.2	0.2	0.7	3.0%	1.3	1.8%	0.6	0.9%
Leisure and Hospitality	67.8	-0.1	0.0	0.0	0.0%	-0.2	-0.4%	-0.7	-1.3%
Other Services	25.1	0.2	0.0	0.2	3.3%	0.3	1.6%	-0.2	-1.1%
Total Government	95.3	0.2	0.7	1.6	7.0%	1.8	2.6%	-0.5	-0.7%
Federal Government	9.7	0.0	0.0	-0.1	-4.0%	-0.4	-5.2%	0.0	0.0%
State and Local Education	47.1	0.2	0.9	1.7	15.8%	2.1	6.3%	0.3	0.9%
Other State and Local	38.5	0.0	0.0	0.0	0.0%	0.2	0.7%	-0.8	-2.7%
<b>Household Statistics</b>									
Labor Force	861.9	1.6	3.6	9.1	4.3%	13.6	2.1%	-9.6	-1.5%
Household Employment	814.9	1.1	2.6	7.5	3.8%	17.5	2.9%	3.8	0.6%
Unemployment Rate	5.5%	0.05%	0.09%	0.13%		-0.55%		-1.48%	

The San Jose MSA is Santa Clara and San Benito counties.

# Sacramento MSA: Employment Charts and Summary

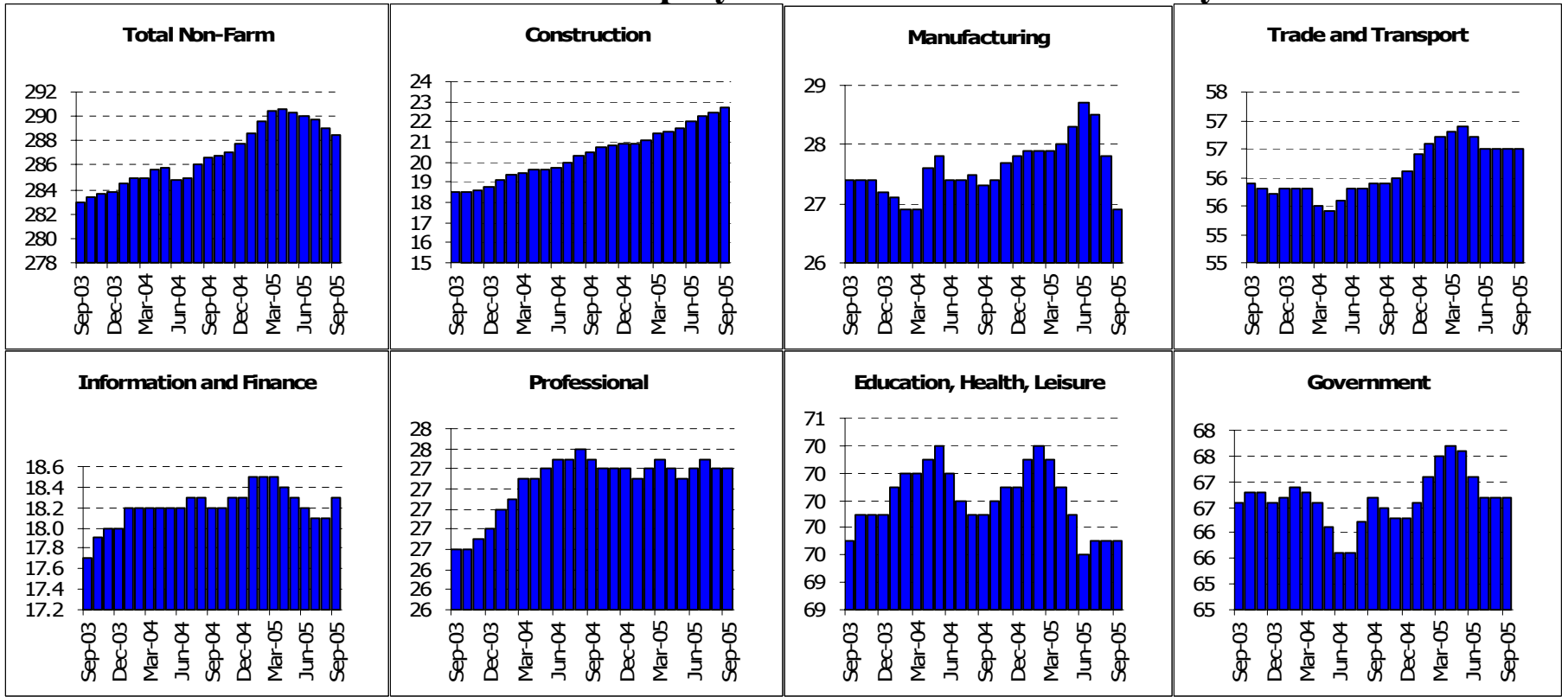


## Sacramento MSA: Employment Tables (thousands)

	Current	Monthly Change		Quarterly Change		Year-to-date 2005		Year-to-date 2004	
	Level	Aug-05	Jul-05	Abs.	%AR	Abs.	%AR	Abs.	%AR
<b>Payroll Statistics</b>	Sep-05	Sep-05	Aug-05	Abs.	%AR	Abs.	%AR	Abs.	%AR
Total Non-Farm	870.0	1.4	0.8	3.3	1.5%	7.4	1.1%	5.4	0.8%
Total Private	646.8	1.2	0.8	2.6	1.6%	5.2	1.1%	10.8	2.3%
Construction	72.3	0.3	0.2	0.7	4.0%	0.9	1.7%	1.3	2.5%
Durable Manufacturing	34.3	0.2	0.0	0.2	2.4%	0.7	2.8%	0.2	0.8%
Non-Durable Manufacturing	14.2	0.0	-0.2	-0.3	-8.0%	-0.3	-2.7%	1.1	11.0%
Wholesale Trade	26.0	0.0	0.0	-0.1	-1.5%	-0.1	-0.5%	-0.3	-1.5%
Retail Trade	100.6	0.3	0.1	0.5	2.0%	3.6	5.0%	1.2	1.7%
Transportation and Utilities	24.3	0.1	0.0	0.1	1.7%	0.6	3.4%	0.7	4.2%
Information	19.8	0.2	0.0	0.2	4.1%	-0.9	-5.8%	-0.9	-5.5%
Financial Activities	60.6	0.2	0.0	0.1	0.7%	-0.3	-0.7%	1.5	3.4%
Professional Services	44.0	0.3	0.1	0.5	4.7%	1.3	4.1%	0.3	0.9%
Management Companies	8.7	-0.2	-0.1	-0.1	-4.5%	-0.2	-3.0%	-0.9	-11.9%
Administrative Support	46.3	-0.3	-0.2	-0.6	-5.0%	-0.1	-0.3%	1.2	3.6%
Education and Healthcare	86.6	-0.1	0.2	0.3	1.4%	0.7	1.1%	3.3	5.4%
Leisure and Hospitality	79.7	0.6	0.5	1.4	7.3%	-0.2	-0.3%	1.8	3.1%
Other Services	28.7	0.1	0.0	0.1	1.4%	0.3	1.4%	0.4	1.9%
Total Government	223.2	0.2	0.1	0.8	1.4%	2.3	1.4%	-5.4	-3.2%
Federal Government	12.2	0.1	0.0	0.1	3.3%	0.1	1.1%	-0.4	-4.2%
State and Local Education	90.8	0.0	-0.4	-0.3	-1.3%	1.0	1.5%	-0.9	-1.3%
Other State and Local	120.2	0.3	0.5	1.1	3.7%	1.3	1.5%	-4.2	-4.5%
<b>Household Statistics</b>									
Labor Force	1031.4	2.8	3.6	10.1	4.0%	21.3	2.8%	7.4	1.0%
Household Employment	982.7	1.4	2.9	8.0	3.3%	23.6	3.3%	11.8	1.7%
Unemployment Rate	4.7%	0.12%	0.05%	0.16%		-0.33%		-0.48%	

The Sacramento MSA is made up of El Dorado, Placer, Yolo & Sacramento counties

# Fresno MSA: Employment Charts and Summary



## Fresno MSA: Employment Tables (thousands)

	Current	Monthly Change		Quarterly Change		Year-to-date 2005		Year-to-date 2004	
	Level	Aug-05	Jul-05	Abs.	% AR	Abs.	% AR	Abs.	% AR
<b>Payroll Statistics</b>	Sep-05	Sep-05	Aug-05	Abs.	% AR	Abs.	% AR	Abs.	% AR
Total Non-Farm	288.4	-0.7	-0.6	-1.6	-2.2%	0.7	0.3%	2.8	1.3%
Total Private	221.7	-0.7	-0.6	-1.2	-2.1%	0.3	0.2%	2.8	1.7%
Construction	22.7	0.2	0.2	0.7	13.3%	1.8	11.6%	1.7	12.2%
Durable Manufacturing	11.3	0.0	0.1	0.1	3.6%	0.8	10.3%	0.3	4.0%
Non-Durable Manufacturing	15.6	-0.9	-0.7	-1.9	-36.9%	-1.7	-12.9%	-0.2	-1.5%
Wholesale Trade	12.3	0.0	0.0	0.0	0.0%	-0.2	-2.1%	0.3	3.3%
Retail Trade	34.3	-0.1	0.1	0.0	0.0%	0.4	1.6%	-0.1	-0.4%
Transportation and Utilities	9.9	0.1	0.0	0.0	0.0%	0.1	1.4%	0.0	0.0%
Information	4.6	0.1	0.0	0.1	9.2%	0.2	6.1%	0.0	0.0%
Financial Activities	13.7	0.1	0.0	0.0	0.0%	-0.2	-1.9%	0.2	2.0%
Professional Services	9.6	0.1	0.0	0.0	0.0%	0.1	1.4%	0.1	1.4%
Management Companies	3.7	0.0	0.0	0.0	0.0%	0.0	0.0%	-0.1	-3.4%
Administrative Support	14.1	0.0	-0.1	0.0	0.0%	0.0	0.0%	0.6	6.0%
Education and Healthcare	35.4	-0.1	0.0	-0.1	-1.1%	0.1	0.4%	-0.3	-1.1%
Leisure and Hospitality	23.8	0.1	0.0	0.1	1.7%	-0.3	-1.7%	0.4	2.3%
Other Services	10.5	0.0	0.0	0.1	3.9%	-0.2	-2.5%	-0.1	-1.2%
Total Government	66.7	0.0	0.0	-0.4	-2.4%	0.4	0.8%	0.1	0.2%
Federal Government	10.2	0.0	-0.1	-0.4	-14.3%	0.1	1.3%	-0.6	-7.1%
State and Local Education	32.6	0.0	-0.1	-0.3	-3.6%	-0.4	-1.6%	0.5	2.1%
Other State and Local	23.9	0.2	0.1	0.5	8.8%	0.8	4.6%	0.2	1.2%
<b>Household Statistics</b>									
Labor Force	408.9	-4.1	-0.2	-1.9	-1.8%	1.3	0.4%	-2.0	-0.6%
Household Employment	370.2	-4.1	-1.1	-3.7	-3.9%	1.4	0.5%	-0.2	-0.1%
Unemployment Rate	9.5%	0.09%	0.22%	0.48%		-0.05%		-0.39%	

The Fresno MSA is made up of Fresno County only now.