

**UCLA ANDERSON FORECAST DATA RELEASE**  
**SEASONALLY ADJUSTED REGIONAL JOB DATA FOR CALIFORNIA**  
**October 2005 Released on November 18, 2005**

Headline economic data announced for the U.S. economy are invariably published in seasonally adjusted form, and most of the statewide data are so adjusted as well. California is a very large economy, with many highly diverse regional economies. Unfortunately the regional data are not seasonally adjusted by state agencies. As a result, the local data are not amenable to analysis of recent short-run trends in the local economies, since in the absence of seasonal adjustment, analysts typically look at job levels and growth rates compared to those of a year earlier, in order to abstract from seasonal influences. This practice provides a relevant perspective on how regional economic growth has developed over the past year, but it says little or nothing about how regional growth has progressed in recent months.

To address these deficiencies in the local data, the UCLA Anderson Forecast will publish seasonally adjusted versions of employment data for the ten major metropolitan economies within California. On the 2nd Friday of each month, when the unadjusted regional data are released by EDD, our economists will compile seasonally adjusted versions of the major components of payroll employment, aggregate employment within both the household and payroll surveys, and unemployment rates. Soon after the EDD data release we will publish a summary table of our seasonally adjusted employment data for each of the covered metropolitan regions, along with summary charts.

The ten economic regions covered at this time will be Los Angeles County, Orange County, San Diego County, the Riverside-San Bernardino (Inland Empire) economic region, Ventura County, Santa Clara County (San Jose MSA), the San Francisco-San Mateo-Marín metro region (San Francisco MSA), the Alameda-Contra Costa (Oakland MSA) region, the Sacramento-Placer-El Dorado area (Sacramento MSA) and Fresno-Madera region (Fresno MSA).

Any or all of these summary tables can be obtained through the Media Relations Office at the UCLA Anderson School of Management (call Hilary Rehder, 310-206-7707). For our economists' commentary on the data, please refer to the following contact list. If you are unable to reach one of economists please contact Hilary Rehder. For general information about the UCLA Anderson Forecast please call 310-825-1623.

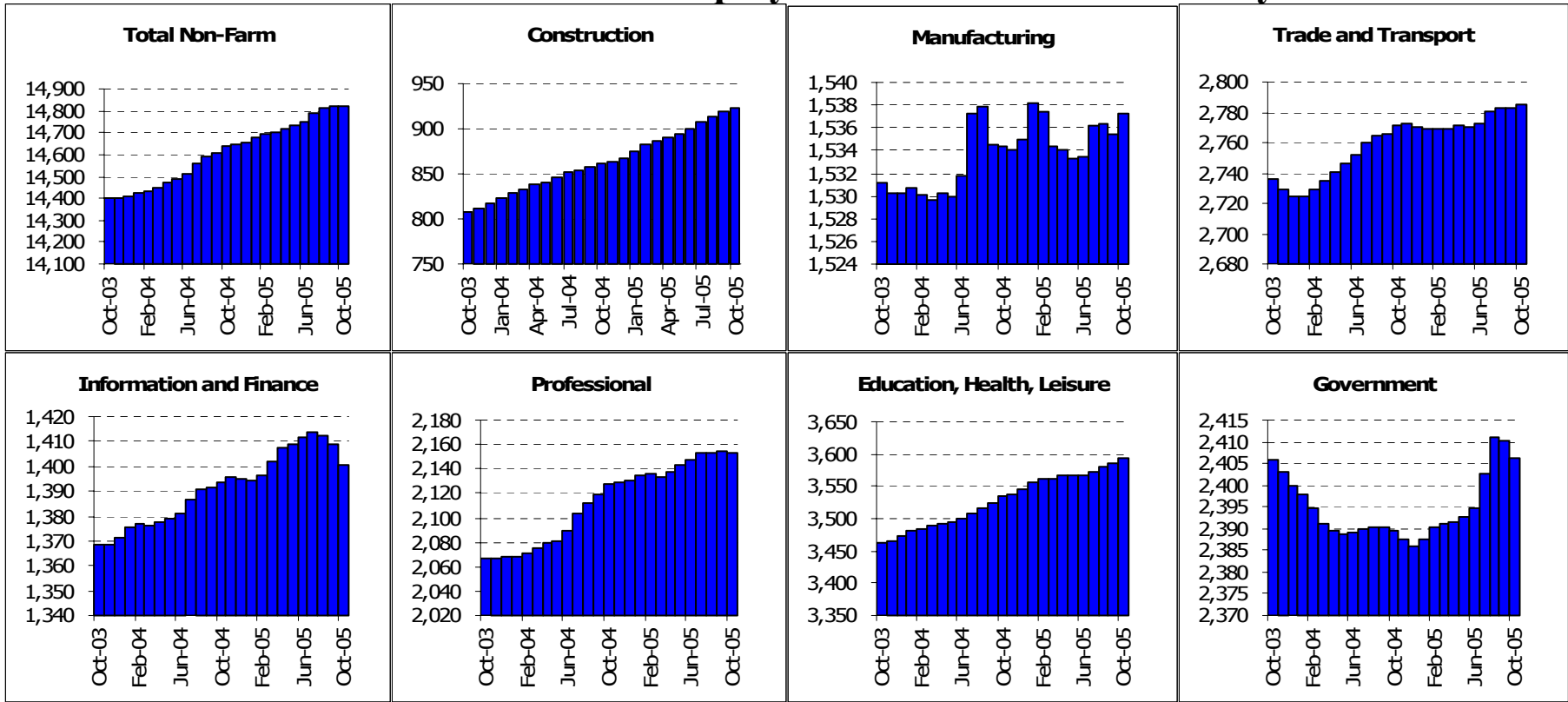
Economist	Contact	Economist	Contact
Christopher Thornberg	310-794-6382 UCLA	Ryan Ratcliff	310-206-4642 UCLA

## California Overview

### Payroll Employment

	Current	Monthly Change		Quarterly Change		Year-to-date 2005		Year-to-date 2004	
	Level	Sep-05	Aug-05	Quarterly Change		Year-to-date 2005		Year-to-date 2004	
	Oct-05	Oct-05	Sep-05	Abs.	%AR	Abs.	%AR	Abs.	%AR
California	14823.2	4.2	4.9	33.2	0.9%	171.9	1.4%	229.1	1.9%
Los Angeles	4020.5	-8.7	-3.5	-11.4	-1.1%	27.0	0.8%	18.3	0.6%
Orange County	1486.8	-1.1	-1.7	-2.1	-0.6%	16.3	1.3%	25.7	2.1%
Riverside	1180.6	0.7	1.7	7.0	2.4%	17.7	1.8%	36.5	3.9%
San Diego	1280.2	0.0	-0.5	0.6	0.2%	15.1	1.4%	17.1	1.6%
Ventura	287.5	0.2	0.4	1.0	1.4%	2.9	1.2%	-0.5	-0.2%
Santa Barbara	172.3	0.2	0.1	0.4	0.9%	3.3	2.3%	1.0	0.7%
Bakersfield	219.3	0.3	0.7	2.2	4.1%	6.7	3.8%	4.6	2.7%
East Bay	1042.0	2.6	0.3	4.4	1.7%	18.0	2.1%	4.2	0.5%
San Francisco	950.8	2.2	0.6	3.4	1.4%	9.8	1.3%	1.0	0.1%
San Jose	860.0	0.6	-0.1	1.3	0.6%	3.5	0.5%	0.3	0.0%
Sacramento	872.5	2.1	1.7	4.8	2.2%	9.9	1.4%	8.0	1.1%
Santa Rosa	184.3	-1.1	-1.1	-1.8	-3.8%	-1.1	-0.7%	0.8	0.5%
Fresno	289.5	0.0	0.0	-0.3	-0.4%	1.8	0.8%	3.0	1.3%

# State of California: Employment Charts and Summary

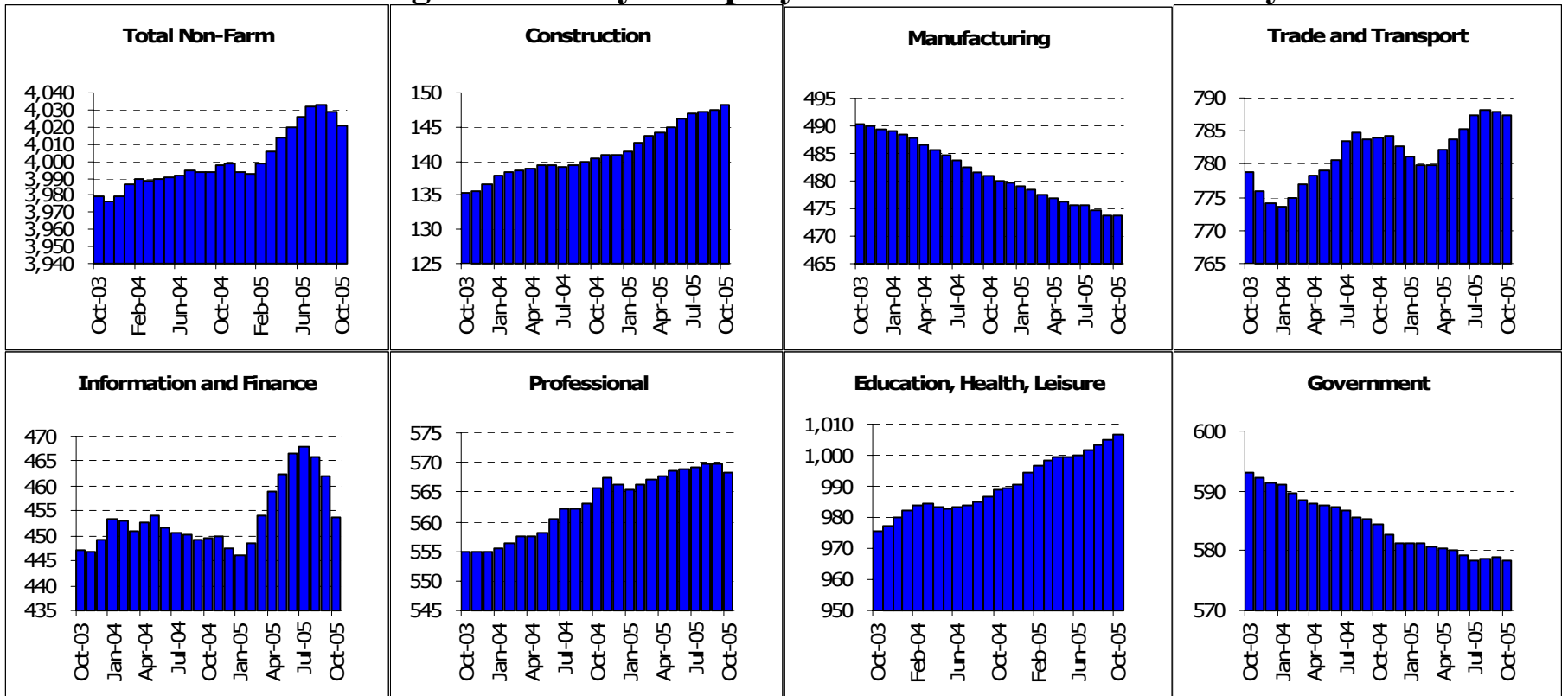


## State of California: Employment Tables (thousands)

	Current	Monthly Change		Quarterly Change		Year-to-date 2005		Year-to-date 2004	
	Level	Sep-05	Aug-05	Abs.	%AR	Abs.	%AR	Abs.	%AR
<b>Payroll Statistics</b>	Oct-05	Oct-05	Sep-05	Abs.	%AR	Abs.	%AR	Abs.	%AR
Total Non-Farm	14823.2	4.2	4.9	33.2	0.9%	171.9	1.4%	229.1	1.9%
Total Private	12416.9	8.3	5.7	29.6	1.0%	151.7	1.5%	239.2	2.4%
Construction	923.0	4.7	4.7	15.0	6.8%	55.8	7.8%	44.0	6.5%
Durable Manufacturing	986.2	1.3	0.5	2.9	1.2%	6.0	0.7%	12.1	1.5%
Non-Durable Manufacturing	551.1	0.5	-1.4	-1.8	-1.3%	-3.6	-0.8%	-8.0	-1.7%
Wholesale Trade	661.9	1.0	0.4	1.8	1.1%	3.9	0.7%	9.3	1.7%
Retail Trade	1638.2	0.6	-0.6	2.6	0.6%	12.9	1.0%	29.9	2.2%
Transportation and Utilities	484.5	0.3	-0.1	0.2	0.2%	-2.2	-0.5%	7.3	1.8%
Information	477.3	-9.3	-4.8	-16.9	-13.0%	-3.1	-0.8%	2.3	0.6%
Financial Activities	923.1	0.9	1.2	3.3	1.4%	8.3	1.1%	20.4	2.8%
Professional Services	928.1	0.2	0.6	1.9	0.8%	14.6	1.9%	18.0	2.4%
Management Companies	229.6	-0.3	-0.3	-0.9	-1.6%	-1.1	-0.6%	-8.3	-4.1%
Administrative Support	995.8	-0.6	0.1	0.1	0.0%	10.2	1.2%	50.5	6.5%
Education and Healthcare	1598.0	5.1	3.2	11.6	3.0%	24.7	1.9%	22.1	1.7%
Leisure and Hospitality	1487.7	5.1	2.8	11.0	3.0%	24.4	2.0%	34.5	2.9%
Other Services	508.6	-0.8	-0.5	-0.9	-0.7%	0.2	0.0%	4.0	1.0%
Total Government	2406.3	-4.1	-0.7	3.6	0.6%	20.2	1.0%	-10.2	-0.5%
Federal Government	245.3	-0.3	0.1	-0.5	-0.8%	-2.0	-1.0%	-2.5	-1.2%
State and Local Education	1156.8	-3.3	-1.3	2.7	0.9%	15.4	1.6%	-0.4	0.0%
Other State and Local	1004.2	-0.4	0.4	1.5	0.6%	6.9	0.8%	-7.2	-0.9%
<b>Household Statistics</b>									
Labor Force	17944.8	1.2	5.5	55.1	1.2%	308.2	2.1%	173.1	1.2%
Household Employment	17003.6	1.0	0.7	45.7	1.1%	405.3	2.9%	265.7	2.0%
Unemployment Rate	5.2%	0.00%	0.03%	0.04%		-0.64%		-0.59%	

The California EDD also releases seasonally adjusted data for California. As the EDD uses a different algorithm for this process, their numbers may differ from ours on a month to month basis.

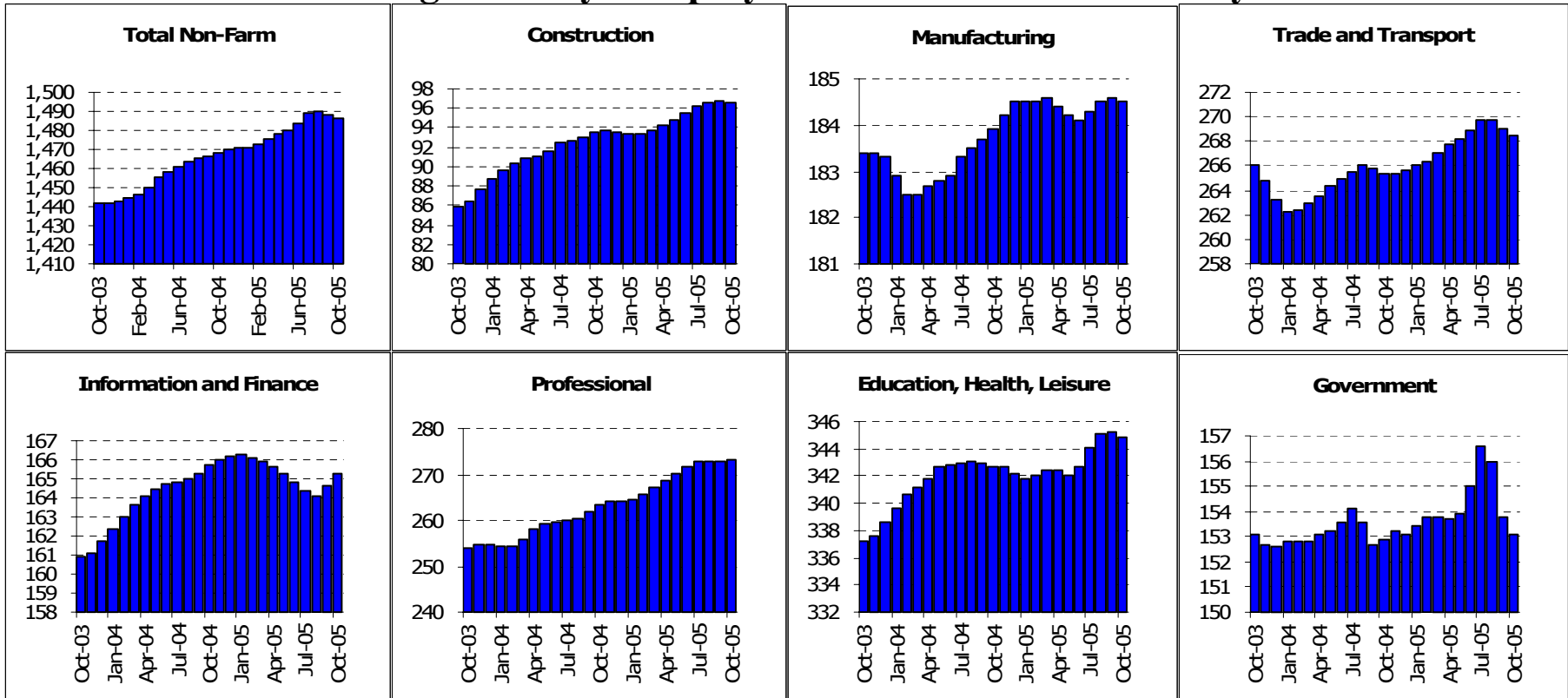
# Los Angeles County: Employment Charts and Summary



## Los Angeles County: Employment Tables (thousands)

	Current	Monthly Change		Quarterly Change		Year-to-date 2005		Year-to-date 2004	
	Level	Sep-05	Aug-05	Abs.	%AR	Abs.	%AR	Abs.	%AR
<b>Payroll Statistics</b>	Oct-05	Oct-05	Sep-05	Abs.	%AR	Abs.	%AR	Abs.	%AR
Total Non-Farm	4020.5	-8.7	-3.5	-11.4	-1.1%	27.0	0.8%	18.3	0.6%
Total Private	3442.1	-8.0	-3.9	-11.3	-1.3%	29.9	1.1%	25.2	0.9%
Construction	148.2	0.6	0.3	1.2	3.3%	7.4	6.3%	3.8	3.3%
Durable Manufacturing	265.1	0.3	-0.3	-0.6	-0.9%	-1.8	-0.8%	-2.0	-0.9%
Non-Durable Manufacturing	208.8	-0.2	-0.5	-1.0	-1.9%	-3.7	-2.1%	-6.7	-3.6%
Wholesale Trade	212.9	0.3	0.0	0.3	0.6%	-0.7	-0.4%	0.4	0.2%
Retail Trade	410.2	-0.5	-0.2	-0.1	-0.1%	5.9	1.8%	5.3	1.6%
Transportation and Utilities	164.2	-0.2	-0.4	-0.3	-0.7%	1.3	1.0%	3.9	3.0%
Information	207.1	-8.7	-4.1	-15.0	-24.4%	3.9	2.3%	-2.7	-1.6%
Financial Activities	246.6	0.5	0.2	0.9	1.5%	2.2	1.1%	3.1	1.5%
Professional Services	240.1	-0.5	-0.4	-0.8	-1.3%	1.2	0.6%	5.1	2.6%
Management Companies	71.0	0.1	0.2	0.3	1.7%	0.6	1.0%	-4.1	-6.6%
Administrative Support	257.2	-0.9	0.1	-0.4	-0.6%	0.0	0.0%	9.7	4.7%
Education and Healthcare	478.3	1.7	1.2	3.6	3.1%	7.1	1.8%	3.7	1.0%
Leisure and Hospitality	382.8	0.3	0.5	1.7	1.8%	8.7	2.8%	5.4	1.8%
Other Services	145.5	-0.2	-0.3	-0.6	-1.6%	0.1	0.1%	-0.1	-0.1%
Total Government	578.4	-0.6	0.4	-0.1	-0.1%	-2.9	-0.6%	-7.0	-1.4%
Federal Government	53.5	-0.1	0.0	-0.3	-2.2%	-0.2	-0.4%	-0.2	-0.4%
State and Local Education	288.4	0.3	-0.2	0.0	0.0%	-4.3	-1.8%	-5.3	-2.1%
Other State and Local	236.5	-0.7	0.5	0.3	0.5%	1.7	0.9%	-1.5	-0.8%
<b>Household Statistics</b>									
Labor Force	4887.9	4.2	-5.8	-6.6	-0.5%	48.5	1.2%	56.0	1.4%
Household Employment	4668.9	9.9	3.7	22.1	1.9%	136.7	3.6%	72.5	2.0%
Unemployment Rate	4.5%	-0.12%	-0.19%	-0.58%		-1.87%		-0.42%	

# Orange County: Employment Charts and Summary

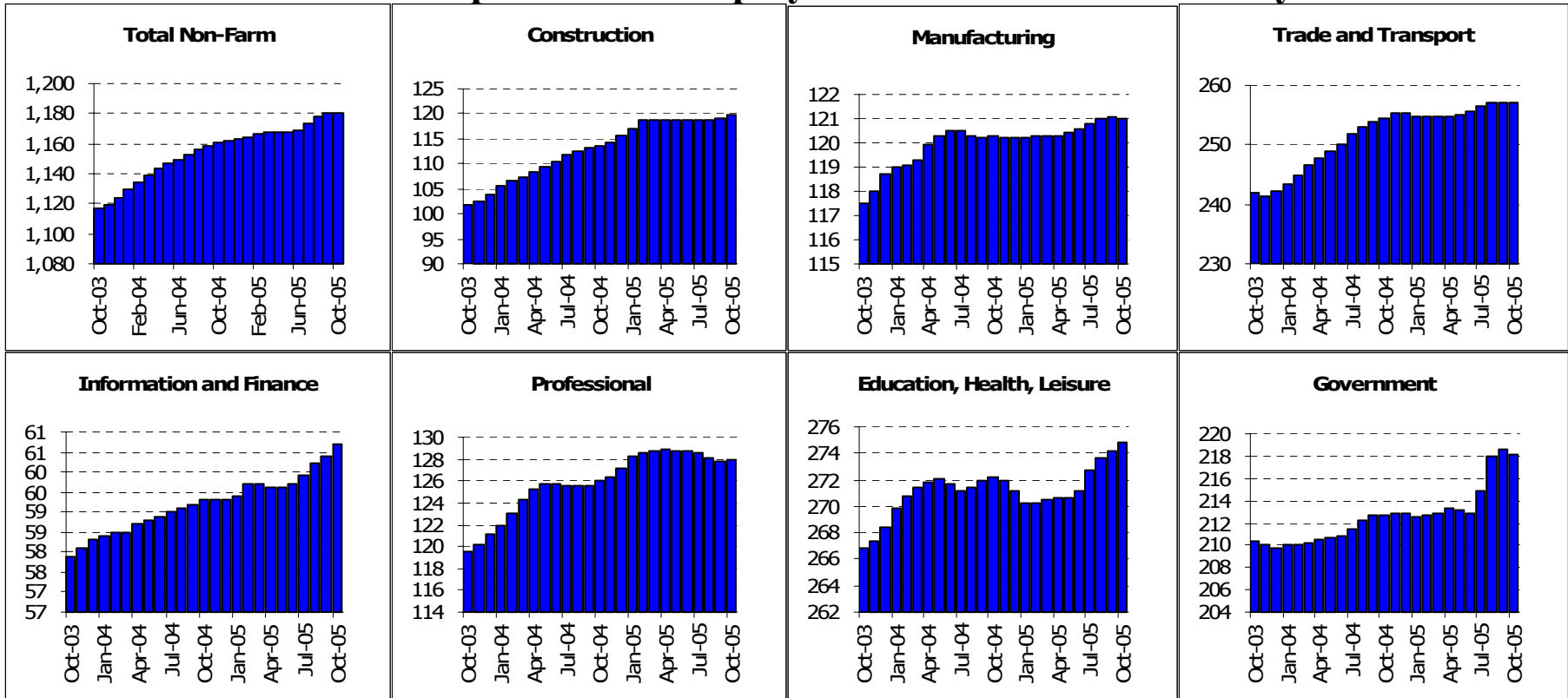


## Orange County: Employment Tables (thousands)

	Current	Monthly Change		Quarterly Change		Year-to-date 2005		Year-to-date 2004	
	Level	Sep-05	Aug-05	Abs.	%AR	Abs.	%AR	Abs.	%AR
<b>Payroll Statistics</b>	Oct-05	Oct-05	Sep-05						
Total Non-Farm	1486.8	-1.1	-1.7	-2.1	-0.6%	16.3	1.3%	25.7	2.1%
Total Private	1333.7	-0.3	0.4	1.5	0.5%	16.4	1.5%	25.5	2.4%
Construction	96.6	-0.1	0.2	0.4	1.7%	3.0	3.9%	5.9	8.1%
Durable Manufacturing	128.8	0.0	0.1	0.4	1.3%	1.2	1.1%	0.6	0.6%
Non-Durable Manufacturing	55.7	-0.1	0.1	-0.2	-1.4%	-1.0	-2.1%	0.0	0.0%
Wholesale Trade	83.1	-0.1	0.0	0.1	0.5%	1.0	1.5%	-0.1	-0.1%
Retail Trade	156.5	-0.5	-0.4	-1.2	-3.0%	2.8	2.2%	2.3	1.8%
Transportation and Utilities	28.9	0.0	-0.1	-0.1	-1.4%	-0.3	-1.2%	-0.1	-0.4%
Information	32.9	0.3	0.3	0.7	9.0%	-0.3	-1.1%	-0.9	-3.1%
Financial Activities	132.4	0.4	0.2	0.2	0.6%	-0.6	-0.5%	4.9	4.6%
Professional Services	101.2	0.3	0.4	1.2	4.9%	3.7	4.6%	1.7	2.1%
Management Companies	31.0	0.1	-0.1	-0.1	-1.3%	0.2	0.8%	0.1	0.4%
Administrative Support	141.0	0.0	-0.3	-0.5	-1.4%	5.0	4.4%	6.9	6.5%
Education and Healthcare	131.8	-0.1	0.0	0.3	0.9%	1.2	1.1%	0.7	0.6%
Leisure and Hospitality	164.8	-0.1	0.1	0.4	1.0%	0.5	0.4%	3.5	2.6%
Other Services	48.3	-0.1	0.0	0.1	0.8%	1.0	2.5%	-0.1	-0.3%
Total Government	153.1	-0.7	-2.2	-3.5	-8.6%	0.0	0.0%	0.3	0.2%
Federal Government	11.2	0.0	-0.1	-0.1	-3.5%	-0.3	-3.1%	-0.2	-2.0%
State and Local Education	91.0	-0.3	-2.0	-2.8	-11.4%	0.7	0.9%	0.2	0.3%
Other State and Local	50.9	-0.2	-0.3	-0.5	-3.8%	-0.3	-0.7%	0.3	0.7%
<b>Household Statistics</b>									
Labor Force	1631.6	-5.4	-0.4	0.7	0.2%	33.8	2.5%	25.4	1.9%
Household Employment	1568.2	-6.4	-2.2	-4.1	-1.0%	34.0	2.7%	32.8	2.6%
Unemployment Rate	3.9%	0.07%	0.11%	0.29%		-0.09%		-0.54%	



# Inland Empire MSA: Employment Charts and Summary

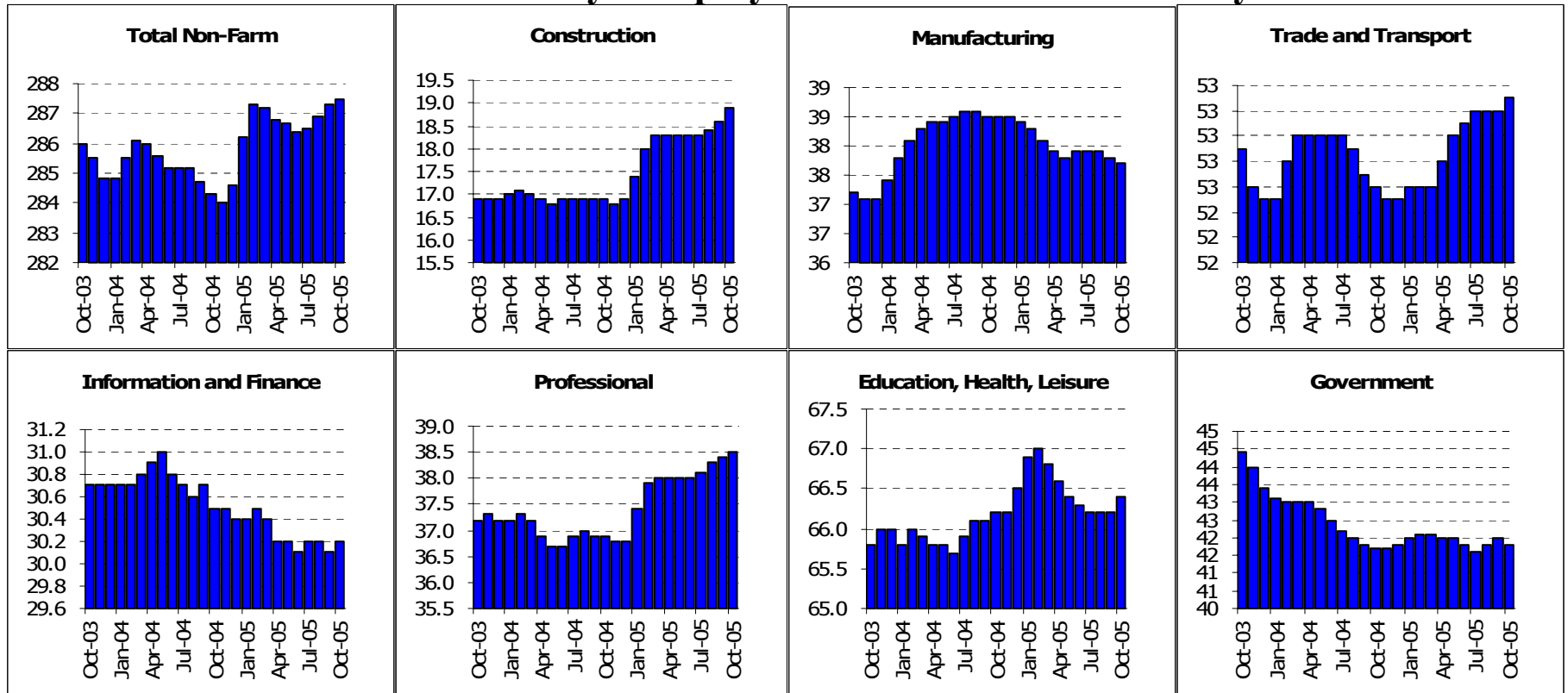


## Inland Empire MSA: Employment Tables (thousands)

	Current	Monthly Change		Quarterly Change		Year-to-date 2005		Year-to-date 2004	
	Level	Sep-05	Aug-05	Abs.	%AR	Abs.	%AR	Abs.	%AR
<b>Payroll Statistics</b>	Oct-05	Oct-05	Sep-05	Abs.	%AR	Abs.	%AR	Abs.	%AR
Total Non-Farm	1180.6	0.7	1.7	7.0	2.4%	17.7	1.8%	36.5	3.9%
Total Private	962.5	1.3	1.0	3.8	1.6%	12.5	1.6%	33.6	4.4%
Construction	119.7	0.6	0.4	0.9	3.1%	4.1	4.3%	9.8	11.4%
Durable Manufacturing	86.5	0.1	0.2	0.5	2.3%	0.5	0.7%	1.8	2.6%
Non-Durable Manufacturing	34.5	-0.1	-0.1	-0.2	-2.3%	0.3	1.1%	-0.3	-1.0%
Wholesale Trade	45.5	0.2	0.2	0.4	3.6%	0.0	0.0%	1.8	5.0%
Retail Trade	155.3	-0.1	0.2	0.6	1.6%	1.8	1.4%	7.0	5.7%
Transportation and Utilities	56.3	-0.1	-0.2	-0.3	-2.1%	0.7	1.5%	3.5	8.2%
Information	13.5	0.0	0.0	0.0	0.0%	-0.1	-0.9%	-0.2	-1.7%
Financial Activities	47.2	0.3	0.2	0.8	7.1%	1.5	4.0%	1.2	3.3%
Professional Services	32.6	0.2	0.0	0.3	3.8%	1.2	4.6%	2.6	10.8%
Management Companies	11.8	0.1	0.0	0.1	3.5%	0.3	3.1%	0.3	3.2%
Administrative Support	83.6	0.0	-0.4	-0.9	-4.2%	-0.7	-1.0%	2.0	3.0%
Education and Healthcare	118.5	0.6	0.3	0.9	3.1%	1.3	1.3%	0.3	0.3%
Leisure and Hospitality	116.3	-0.2	0.0	0.7	2.4%	0.9	0.9%	3.6	3.8%
Other Services	40.0	0.2	0.2	0.5	5.2%	1.5	4.7%	-0.1	-0.3%
Total Government	218.1	-0.5	0.6	3.2	6.1%	5.3	3.0%	2.9	1.7%
Federal Government	17.8	0.0	0.0	0.1	2.3%	0.9	6.4%	-0.1	-0.7%
State and Local Education	111.3	-0.4	0.7	3.1	12.0%	2.7	3.0%	1.8	2.0%
Other State and Local	89.0	0.1	-0.1	0.1	0.5%	1.9	2.6%	1.1	1.5%
<b>Household Statistics</b>									
Labor Force	1707.4	-0.6	4.0	14.5	3.5%	43.1	3.1%	46.1	3.4%
Household Employment	1618.2	-2.0	1.8	7.9	2.0%	44.3	3.4%	54.0	4.3%
Unemployment Rate	5.2%	0.08%	0.12%	0.35%		-0.21%		-0.64%	

The Inland Empire is made up of Riverside and San Bernardino counties

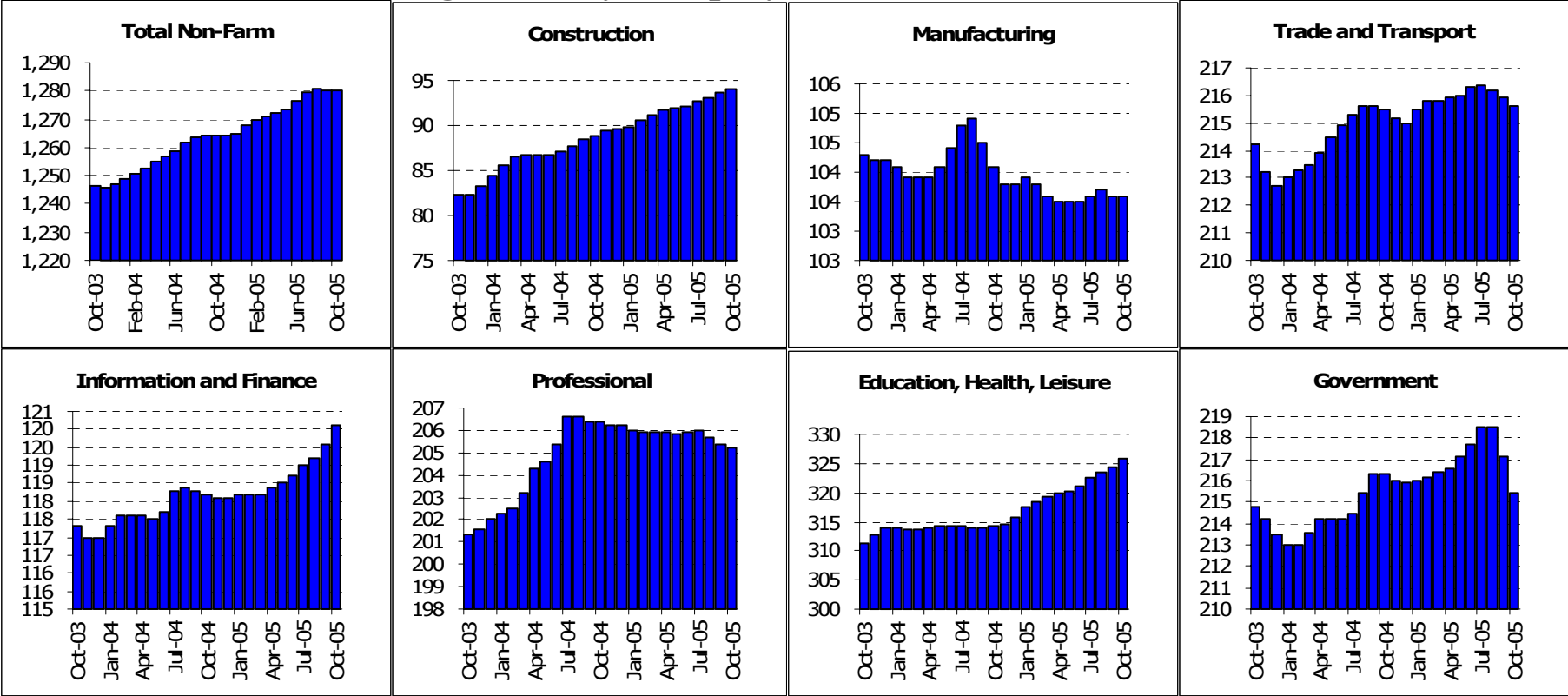
# Ventura County: Employment Charts and Summary



## Ventura County: Employment Tables (thousands)

	Current	Monthly Change		Quarterly Change		Year-to-date 2005		Year-to-date 2004	
	Level	Sep-05	Aug-05	Abs.	%AR	Abs.	%AR	Abs.	%AR
<b>Payroll Statistics</b>	Oct-05	Oct-05	Sep-05	Abs.	%AR	Abs.	%AR	Abs.	%AR
Total Non-Farm	287.5	0.2	0.4	1.0	1.4%	2.9	1.2%	-0.5	-0.2%
Total Private	245.7	0.4	0.2	0.9	1.5%	3.0	1.5%	1.1	0.5%
Construction	18.9	0.3	0.2	0.6	13.8%	2.0	14.4%	0.0	0.0%
Durable Manufacturing	24.1	0.0	0.0	0.0	0.0%	-0.2	-1.0%	0.5	2.5%
Non-Durable Manufacturing	13.6	0.0	-0.1	-0.2	-5.7%	-0.6	-5.0%	0.9	8.2%
Wholesale Trade	12.0	0.1	0.0	0.2	7.0%	0.1	1.0%	0.3	3.1%
Retail Trade	35.6	0.0	-0.1	-0.1	-1.1%	0.7	2.4%	-0.2	-0.7%
Transportation and Utilities	5.7	0.1	0.1	0.1	7.3%	0.2	4.4%	-0.1	-2.1%
Information	6.7	0.0	-0.1	-0.1	-5.8%	0.1	1.8%	-0.3	-5.1%
Financial Activities	23.5	0.1	0.0	0.1	1.7%	-0.3	-1.5%	0.1	0.5%
Professional Services	14.3	0.1	0.0	0.2	5.8%	0.6	5.3%	0.2	1.8%
Management Companies	3.6	0.0	0.0	0.1	11.9%	0.2	7.1%	-0.5	-15.2%
Administrative Support	20.6	0.0	0.1	0.2	4.0%	0.9	5.5%	-0.1	-0.6%
Education and Healthcare	27.9	0.0	0.0	0.0	0.0%	-0.2	-0.9%	-0.1	-0.4%
Leisure and Hospitality	28.3	0.2	0.0	0.1	1.4%	0.0	0.0%	0.5	2.1%
Other Services	10.2	0.0	0.0	0.1	4.0%	0.1	1.2%	-0.2	-2.3%
Total Government	41.8	-0.2	0.2	0.2	1.9%	0.0	0.0%	-1.7	-4.7%
Federal Government	7.4	0.0	0.0	-0.1	-5.2%	-0.1	-1.6%	0.0	0.0%
State and Local Education	18.0	-0.5	0.1	-0.2	-4.3%	-0.8	-5.1%	-1.0	-6.1%
Other State and Local	16.4	0.3	0.1	0.5	13.2%	0.4	3.0%	-0.6	-4.3%
<b>Household Statistics</b>									
Labor Force	424.2	-0.3	0.6	1.6	1.5%	7.8	2.3%	1.9	0.6%
Household Employment	403.9	-0.6	0.4	0.9	0.9%	8.4	2.6%	3.9	1.2%
Unemployment Rate	4.8%	0.07%	0.04%	0.15%		-0.23%		-0.51%	

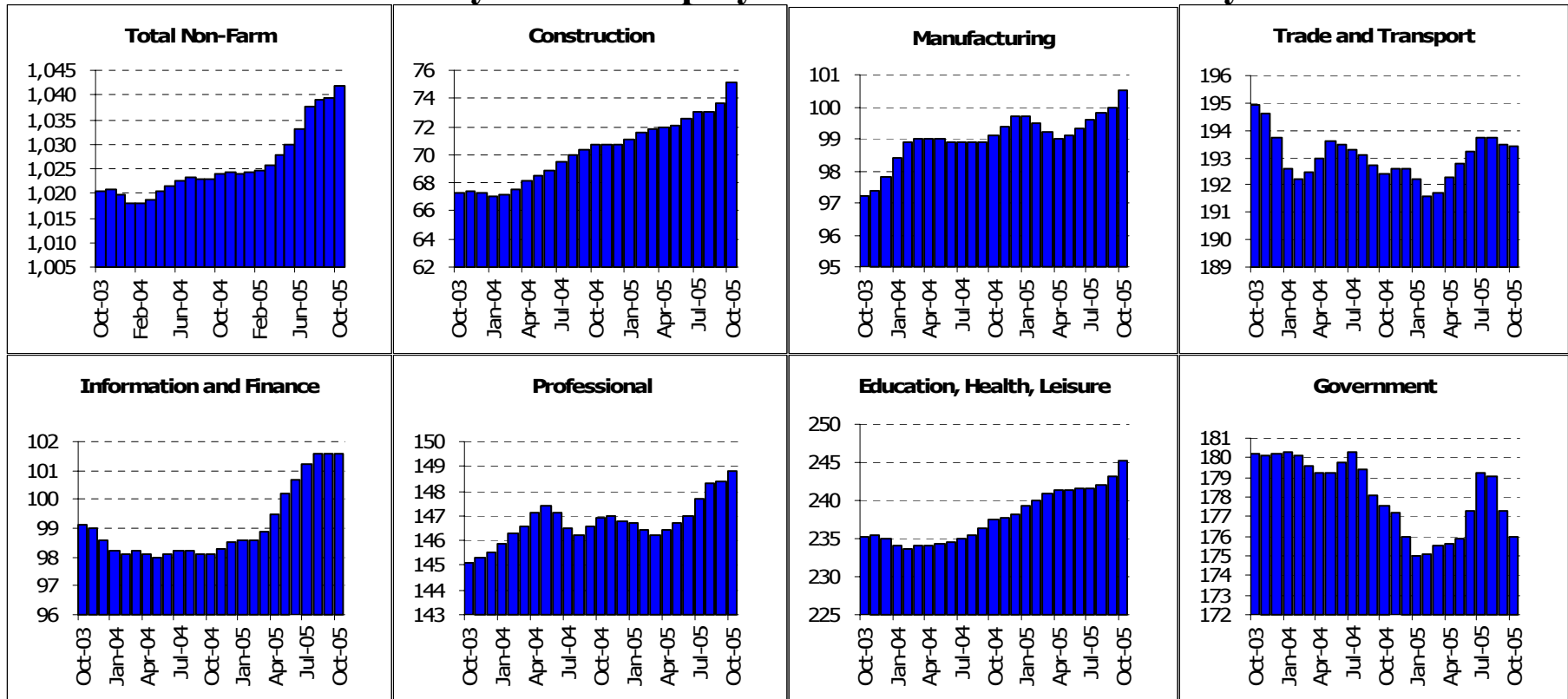
# San Diego County: Employment Charts and Summary



## San Diego County: Employment Tables (thousands)

	Current	Monthly Change		Quarterly Change		Year-to-date 2005		Year-to-date 2004	
	Level	Sep-05	Aug-05	Abs.	%AR	Abs.	%AR	Abs.	%AR
<b>Payroll Statistics</b>	Oct-05	Oct-05	Sep-05	Abs.	%AR	Abs.	%AR	Abs.	%AR
Total Non-Farm	1280.2	0.0	-0.5	0.6	0.2%	15.1	1.4%	17.1	1.6%
Total Private	1064.8	1.7	0.9	3.7	1.4%	15.7	1.8%	14.3	1.7%
Construction	94.0	0.4	0.5	1.4	6.2%	4.4	5.9%	5.7	8.3%
Durable Manufacturing	78.1	0.1	0.0	0.2	1.0%	0.4	0.6%	0.2	0.3%
Non-Durable Manufacturing	25.5	-0.1	-0.1	-0.2	-3.1%	-0.5	-2.3%	-0.3	-1.4%
Wholesale Trade	42.0	0.0	0.0	-0.1	-0.9%	-0.1	-0.3%	0.0	0.0%
Retail Trade	145.1	-0.3	-0.5	-1.0	-2.7%	1.2	1.0%	2.2	1.9%
Transportation and Utilities	28.5	0.1	0.1	0.3	4.3%	0.0	0.0%	0.5	2.1%
Information	36.8	0.1	0.0	0.1	1.1%	0.5	1.7%	0.2	0.7%
Financial Activities	83.3	0.4	0.4	1.0	4.9%	1.5	2.2%	1.0	1.5%
Professional Services	98.9	-0.3	-0.2	-0.6	-2.4%	-0.5	-0.6%	-1.9	-2.2%
Management Companies	17.9	-0.1	-0.1	-0.3	-6.4%	-0.2	-1.3%	-0.4	-2.6%
Administrative Support	88.4	0.2	0.1	0.2	0.9%	-0.3	-0.4%	6.5	9.6%
Education and Healthcare	125.1	0.3	0.3	1.2	3.9%	3.8	3.8%	-2.3	-2.2%
Leisure and Hospitality	150.6	0.9	0.2	1.1	3.0%	4.8	4.0%	1.4	1.2%
Other Services	50.2	0.4	0.3	0.9	7.5%	1.6	4.0%	1.2	3.1%
Total Government	215.4	-1.7	-1.4	-3.1	-5.6%	-0.5	-0.3%	2.8	1.6%
Federal Government	38.5	-0.1	-0.1	-0.2	-2.1%	-0.5	-1.5%	-0.5	-1.5%
State and Local Education	98.4	-1.2	-1.2	-2.4	-9.2%	-0.1	-0.1%	1.8	2.2%
Other State and Local	78.5	-0.3	-0.2	-0.4	-2.0%	0.2	0.3%	1.6	2.5%
<b>Household Statistics</b>									
Labor Force	1534.0	-1.7	1.0	3.9	1.0%	34.6	2.8%	21.0	1.7%
Household Employment	1466.6	-2.9	-0.6	-0.6	-0.2%	34.4	2.9%	26.8	2.3%
Unemployment Rate	4.4%	0.08%	0.10%	0.28%		-0.09%		-0.46%	

# East Bay MSA: Employment Charts and Summary



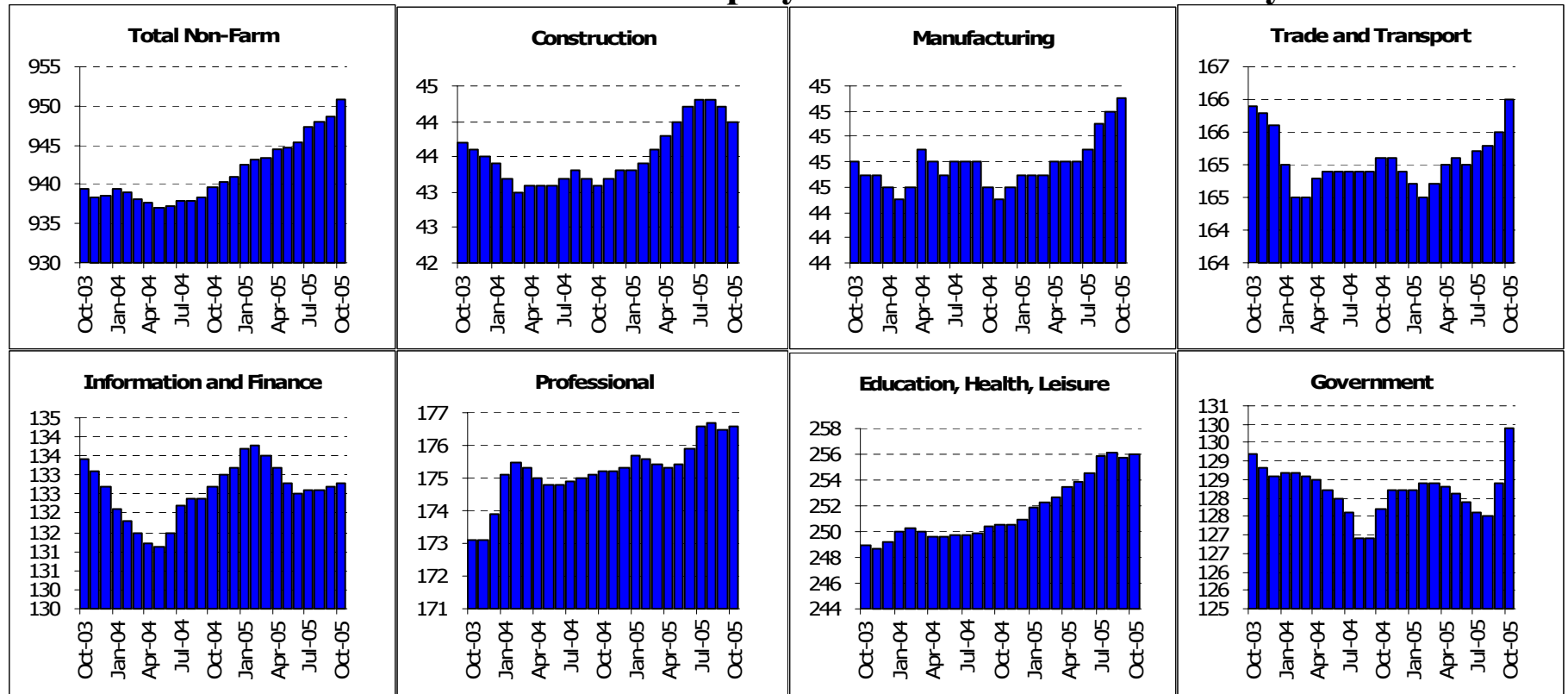
## East Bay MSA: Employment Tables (thousands)

	Current	Monthly Change		Quarterly Change		Year-to-date 2005		Year-to-date 2004	
	Level	Sep-05	Aug-05	Abs.	%AR	Abs.	%AR	Abs.	%AR
<b>Payroll Statistics</b>	Oct-05	Oct-05	Sep-05	Abs.	%AR	Abs.	%AR	Abs.	%AR
Total Non-Farm	1042.0	2.6	0.3	4.4	1.7%	18.0	2.1%	4.2	0.5%
Total Private	866.0	4.0	2.0	7.6	3.6%	18.0	2.6%	6.8	1.0%
Construction	75.2	1.5	0.6	2.2	12.6%	4.5	7.7%	3.4	6.1%
Durable Manufacturing	63.0	0.2	0.0	0.1	0.6%	-0.6	-1.1%	1.3	2.5%
Non-Durable Manufacturing	37.5	0.3	0.3	0.9	10.2%	1.5	5.0%	-0.1	-0.3%
Wholesale Trade	48.1	-0.1	-0.1	-0.2	-1.6%	-0.6	-1.5%	-0.4	-1.0%
Retail Trade	110.2	-0.2	-0.2	-0.4	-1.4%	0.9	1.0%	-0.4	-0.4%
Transportation and Utilities	35.1	0.3	0.1	0.5	5.9%	1.1	3.9%	-0.6	-2.1%
Information	30.4	-0.2	0.0	-0.1	-1.3%	0.1	0.4%	-1.2	-4.5%
Financial Activities	71.2	0.2	0.0	0.5	2.9%	3.0	5.3%	0.7	1.3%
Professional Services	70.4	0.0	0.0	0.1	0.6%	0.6	1.0%	0.5	0.9%
Management Companies	21.5	0.1	0.1	0.4	7.8%	0.5	2.9%	-0.7	-3.8%
Administrative Support	56.9	0.3	0.0	0.7	5.1%	0.9	1.9%	1.6	3.6%
Education and Healthcare	125.0	0.8	0.6	1.9	6.3%	5.3	5.3%	1.7	1.7%
Leisure and Hospitality	83.8	1.1	0.7	2.0	10.1%	2.2	3.2%	0.6	0.9%
Other Services	36.4	0.1	-0.1	-0.2	-2.2%	-0.5	-1.6%	0.3	1.0%
Total Government	176.0	-1.3	-1.8	-3.2	-7.0%	0.0	0.0%	-2.6	-1.7%
Federal Government	16.9	-0.1	0.1	0.0	0.0%	-0.1	-0.7%	-0.7	-4.6%
State and Local Education	85.1	-1.0	-1.6	-2.6	-11.3%	1.9	2.7%	0.6	0.9%
Other State and Local	74.0	-0.1	-0.2	-0.5	-2.7%	-1.7	-2.7%	-2.5	-3.8%
<b>Household Statistics</b>									
Labor Force	1294.6	2.1	1.9	8.7	2.7%	32.3	3.1%	-1.0	-0.1%
Household Employment	1228.6	1.2	0.2	4.2	1.4%	34.6	3.5%	9.7	1.0%
Unemployment Rate	5.1%	0.06%	0.12%	0.32%		-0.31%		-0.84%	

East Bay is also known as the Oakland MSA. It is made up of Alameda and Contra Costa counties.



# San Francisco MSA: Employment Charts and Summary

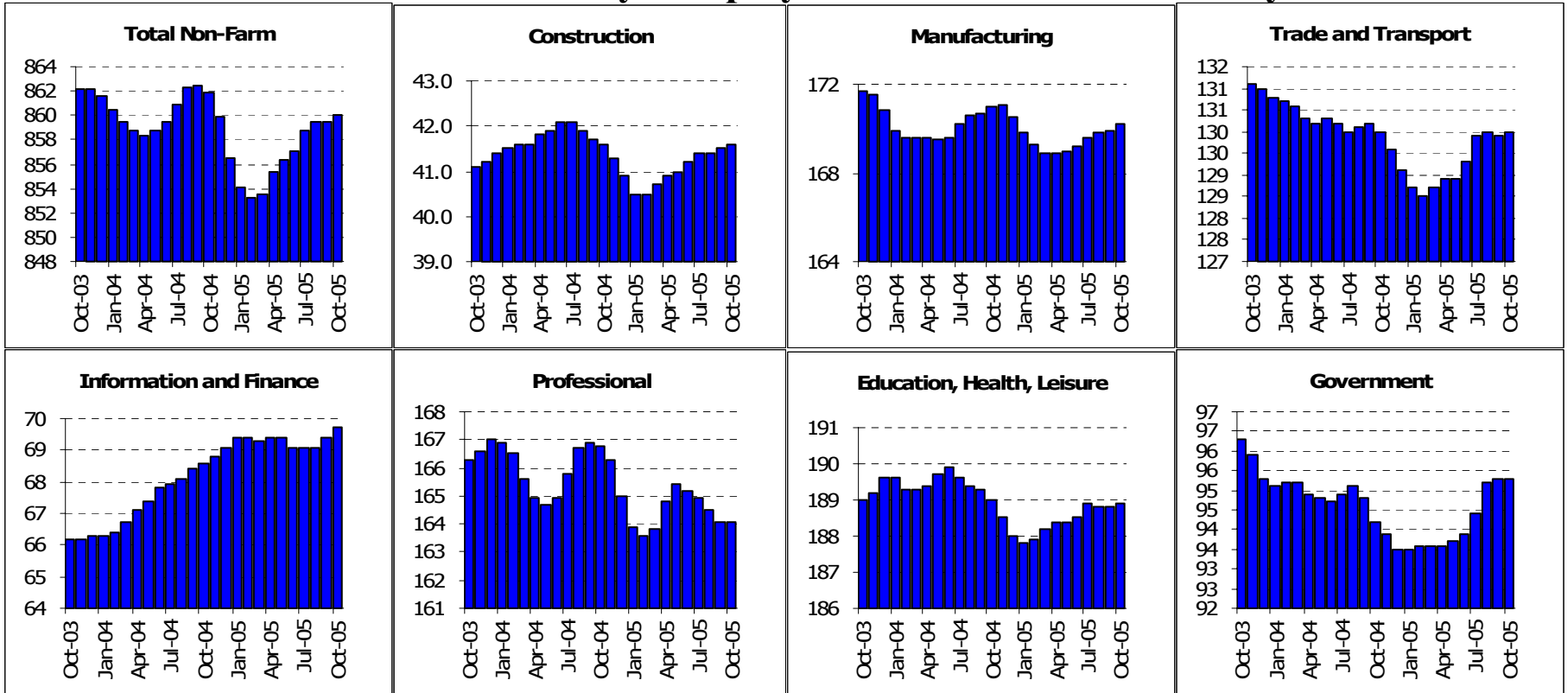


## San Francisco MSA: Employment Tables (thousands)

	Current	Monthly Change		Quarterly Change		Year-to-date 2005		Year-to-date 2004	
	Level	Sep-05	Aug-05	Abs.	%AR	Abs.	%AR	Abs.	%AR
<b>Payroll Statistics</b>	Oct-05	Oct-05	Sep-05	Abs.	%AR	Abs.	%AR	Abs.	%AR
Total Non-Farm	950.8	2.2	0.6	3.4	1.4%	9.8	1.3%	1.0	0.1%
Total Private	820.9	0.7	-0.3	1.1	0.5%	8.1	1.2%	2.0	0.3%
Construction	44.0	-0.2	-0.1	-0.3	-2.7%	0.7	1.9%	-0.4	-1.1%
Durable Manufacturing	22.1	0.0	0.0	-0.1	-1.8%	-0.3	-1.6%	-0.1	-0.5%
Non-Durable Manufacturing	23.2	0.1	0.2	0.5	9.1%	1.1	6.0%	0.1	0.5%
Wholesale Trade	26.7	0.1	-0.1	-0.1	-1.5%	0.1	0.5%	-0.2	-0.9%
Retail Trade	94.2	0.2	0.1	0.3	1.3%	1.1	1.4%	0.3	0.4%
Transportation and Utilities	45.1	0.3	0.2	0.6	5.5%	0.4	1.1%	-0.6	-1.6%
Information	42.3	0.1	-0.1	-0.2	-1.9%	-1.5	-4.1%	-0.7	-1.9%
Financial Activities	90.5	0.0	0.2	0.4	1.8%	1.1	1.5%	0.7	1.0%
Professional Services	99.7	0.2	0.1	0.4	1.6%	0.6	0.7%	1.7	2.1%
Management Companies	21.0	-0.1	-0.1	-0.2	-3.7%	-0.5	-2.8%	-2.0	-10.3%
Administrative Support	55.9	0.1	-0.2	-0.1	-0.7%	1.1	2.4%	1.8	4.1%
Education and Healthcare	102.3	0.1	0.0	0.4	1.6%	2.3	2.8%	1.0	1.2%
Leisure and Hospitality	116.6	0.0	-0.3	-0.3	-1.0%	2.1	2.2%	0.9	1.0%
Other Services	37.1	0.2	-0.1	0.1	1.1%	0.7	2.3%	-0.6	-1.9%
Total Government	129.9	1.5	0.9	2.3	7.4%	1.7	1.6%	-0.9	-0.8%
Federal Government	21.1	0.0	0.0	-0.1	-1.9%	-0.6	-3.3%	-0.1	-0.5%
State and Local Education	49.3	1.6	0.8	1.9	17.0%	1.3	3.3%	-0.7	-1.7%
Other State and Local	59.5	0.0	0.2	0.6	4.1%	1.2	2.5%	-0.2	-0.4%
<b>Household Statistics</b>									
Labor Force	939.4	1.0	1.2	5.3	2.3%	18.6	2.4%	-0.5	-0.1%
Household Employment	895.4	0.2	0.1	2.1	0.9%	20.3	2.8%	6.4	0.9%
Unemployment Rate	4.7%	0.08%	0.11%	0.32%		-0.28%		-0.75%	

The San Francisco MSA includes Marin, San Francisco and San Mateo counties

# Santa Clara County: Employment Charts and Summary

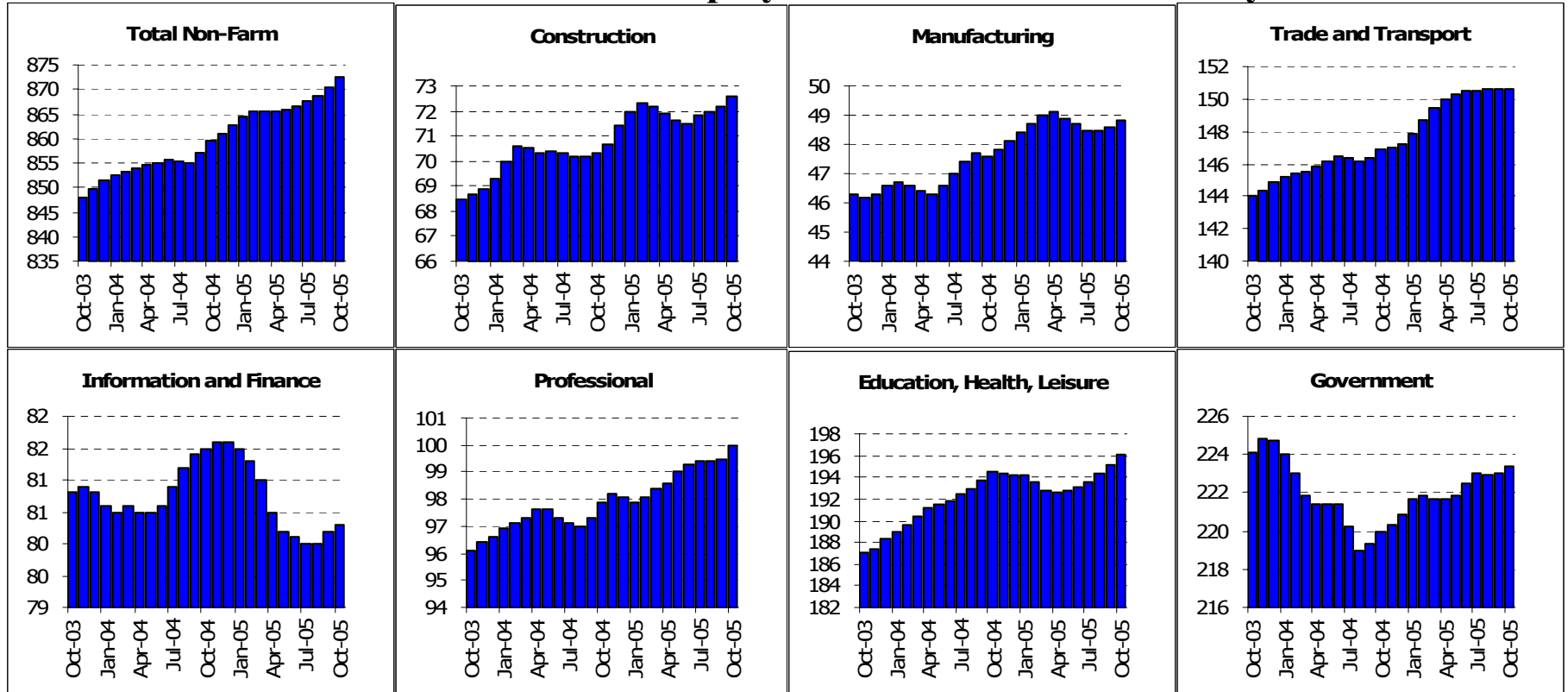


## Santa Clara County: Employment Tables (thousands)

	Current	Monthly Change		Quarterly Change		Year-to-date 2005		Year-to-date 2004	
	Level	Sep-05	Aug-05	Abs.	%AR	Abs.	%AR	Abs.	%AR
<b>Payroll Statistics</b>	Oct-05	Oct-05	Sep-05	Abs.	%AR	Abs.	%AR	Abs.	%AR
Total Non-Farm	860.0	0.6	-0.1	1.3	0.6%	3.5	0.5%	0.3	0.0%
Total Private	764.7	0.7	-0.3	0.5	0.3%	1.8	0.3%	1.3	0.2%
Construction	41.6	0.1	0.1	0.2	1.9%	0.7	2.1%	0.2	0.6%
Durable Manufacturing	157.9	0.3	0.0	0.4	1.0%	-0.2	-0.2%	0.1	0.1%
Non-Durable Manufacturing	12.3	0.1	0.1	0.2	6.8%	0.0	0.0%	0.1	1.0%
Wholesale Trade	35.2	0.0	0.1	0.2	2.3%	0.6	2.1%	0.3	1.1%
Retail Trade	81.8	0.1	-0.2	-0.1	-0.5%	1.1	1.6%	-0.7	-1.0%
Transportation and Utilities	13.0	0.1	0.0	0.1	3.1%	-0.4	-3.6%	-0.5	-4.3%
Information	34.3	0.1	0.2	0.4	4.8%	0.6	2.1%	1.8	6.9%
Financial Activities	35.4	0.2	0.1	0.2	2.3%	0.0	0.0%	0.5	1.7%
Professional Services	95.6	0.2	0.3	0.6	2.6%	-0.6	-0.7%	-1.6	-1.9%
Management Companies	14.0	-0.1	-0.1	-0.4	-10.7%	-1.2	-9.4%	-0.1	-0.8%
Administrative Support	54.5	-0.1	-0.5	-0.9	-6.3%	0.9	2.0%	1.6	3.6%
Education and Healthcare	96.2	0.1	0.0	0.1	0.4%	1.0	1.3%	0.8	1.0%
Leisure and Hospitality	67.3	-0.2	-0.2	-0.6	-3.5%	-0.7	-1.2%	-1.1	-1.9%
Other Services	25.4	0.2	0.2	0.5	8.3%	0.6	2.9%	-0.3	-1.4%
Total Government	95.3	0.0	0.1	0.9	3.9%	1.8	2.3%	-1.1	-1.4%
Federal Government	9.7	0.0	0.0	0.0	0.0%	-0.4	-4.7%	0.0	0.0%
State and Local Education	47.2	0.1	0.2	1.1	9.9%	2.2	5.9%	-0.2	-0.5%
Other State and Local	38.4	0.0	-0.1	-0.1	-1.0%	0.1	0.3%	-0.9	-2.7%
<b>Household Statistics</b>									
Labor Force	860.3	0.4	0.4	3.9	1.8%	12.0	1.7%	-10.3	-1.4%
Household Employment	812.0	-0.1	-0.4	1.2	0.6%	14.6	2.2%	4.0	0.6%
Unemployment Rate	5.6%	0.06%	0.09%	0.29%		-0.39%		-1.58%	

The San Jose MSA is Santa Clara and San Benito counties.

# Sacramento MSA: Employment Charts and Summary

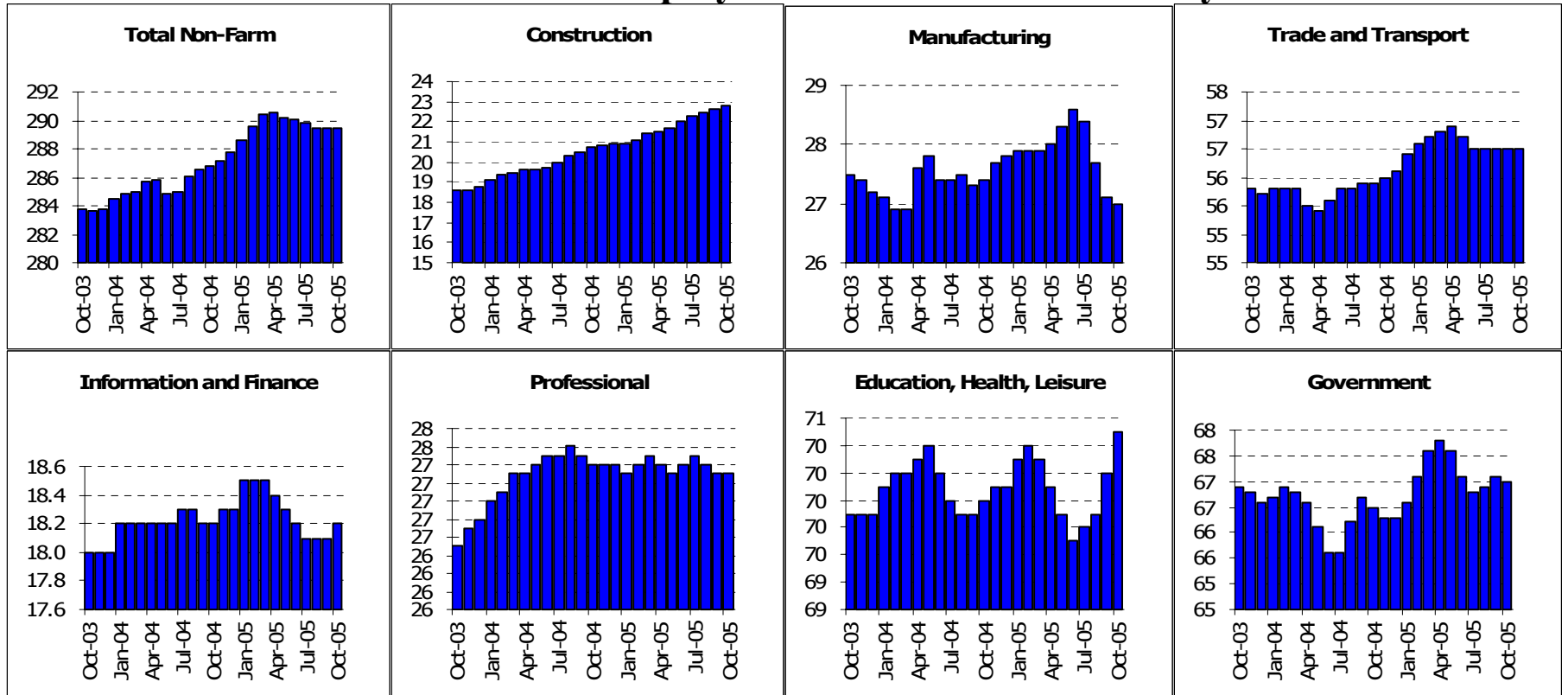


## Sacramento MSA: Employment Tables (thousands)

	Current	Monthly Change		Quarterly Change		Year-to-date 2005		Year-to-date 2004	
	Level	Sep-05	Aug-05	Abs.	%AR	Abs.	%AR	Abs.	%AR
<b>Payroll Statistics</b>	Oct-05	Oct-05	Sep-05	Abs.	%AR	Abs.	%AR	Abs.	%AR
Total Non-Farm	872.5	2.1	1.7	4.8	2.2%	9.9	1.4%	8.0	1.1%
Total Private	649.1	1.7	1.6	4.4	2.8%	7.5	1.4%	12.7	2.4%
Construction	72.6	0.4	0.2	0.8	4.5%	1.2	2.0%	1.4	2.4%
Durable Manufacturing	34.5	0.1	0.2	0.4	4.8%	0.9	3.2%	0.3	1.1%
Non-Durable Manufacturing	14.3	0.1	0.0	-0.1	-2.7%	-0.2	-1.7%	1.0	9.0%
Wholesale Trade	25.8	-0.1	-0.1	-0.2	-3.0%	-0.3	-1.4%	-0.3	-1.4%
Retail Trade	100.2	0.0	0.0	0.0	0.0%	3.2	4.0%	1.4	1.8%
Transportation and Utilities	24.6	0.2	0.1	0.4	6.8%	0.9	4.6%	0.8	4.3%
Information	19.6	0.0	0.0	0.0	0.0%	-1.1	-6.3%	-1.0	-5.5%
Financial Activities	60.7	0.1	0.2	0.3	2.0%	-0.2	-0.4%	1.7	3.5%
Professional Services	43.9	0.0	0.2	0.3	2.8%	1.2	3.4%	0.4	1.1%
Management Companies	9.1	0.1	0.0	0.1	4.5%	0.2	2.7%	-0.8	-9.6%
Administrative Support	47.0	0.4	0.0	0.2	1.7%	0.6	1.6%	1.8	4.9%
Education and Healthcare	86.8	0.1	0.1	0.3	1.4%	0.9	1.3%	3.6	5.3%
Leisure and Hospitality	80.6	0.7	0.7	2.1	11.1%	0.7	1.1%	2.2	3.4%
Other Services	28.7	0.1	0.0	0.1	1.4%	0.3	1.3%	0.4	1.7%
Total Government	223.4	0.4	0.1	0.4	0.7%	2.5	1.4%	-4.7	-2.5%
Federal Government	12.1	0.0	0.0	0.0	0.0%	0.0	0.0%	-0.3	-2.8%
State and Local Education	90.5	0.0	-0.3	-0.8	-3.5%	0.7	0.9%	-0.5	-0.7%
Other State and Local	120.8	0.5	0.5	1.4	4.8%	1.9	1.9%	-4.0	-3.9%
<b>Household Statistics</b>									
Labor Force	1033.7	2.4	2.6	8.6	3.4%	23.6	2.8%	10.2	1.2%
Household Employment	983.5	1.5	1.3	5.2	2.1%	24.4	3.1%	14.9	1.9%
Unemployment Rate	4.9%	0.08%	0.11%	0.29%		-0.19%		-0.52%	

The Sacramento MSA is made up of El Dorado, Placer, Yolo & Sacramento counties

# Fresno MSA: Employment Charts and Summary



## Fresno MSA: Employment Tables (thousands)

	Current	Monthly Change		Quarterly Change		Year-to-date 2005		Year-to-date 2004	
	Level	Sep-05	Aug-05	Abs.	%AR	Abs.	%AR	Abs.	%AR
<b>Payroll Statistics</b>	Oct-05	Oct-05	Sep-05	Abs.	%AR	Abs.	%AR	Abs.	%AR
Total Non-Farm	289.5	0.0	0.0	-0.3	-0.4%	1.8	0.8%	3.0	1.3%
Total Private	222.5	0.2	-0.3	-0.5	-0.9%	1.1	0.6%	3.1	1.7%
Construction	22.8	0.2	0.1	0.5	9.3%	1.9	11.0%	1.9	12.2%
Durable Manufacturing	11.3	0.0	0.0	0.1	3.6%	0.8	9.2%	0.3	3.6%
Non-Durable Manufacturing	15.7	-0.1	-0.6	-1.5	-30.6%	-1.6	-11.0%	-0.1	-0.7%
Wholesale Trade	12.2	0.0	-0.1	-0.1	-3.2%	-0.3	-2.9%	0.3	3.0%
Retail Trade	34.4	0.1	-0.1	0.1	1.2%	0.5	1.8%	-0.1	-0.4%
Transportation and Utilities	9.9	0.1	0.0	0.1	4.1%	0.1	1.2%	0.0	0.0%
Information	4.5	0.0	0.0	0.0	0.0%	0.1	2.7%	0.0	0.0%
Financial Activities	13.7	0.1	0.0	0.1	3.0%	-0.2	-1.7%	0.2	1.8%
Professional Services	9.5	0.0	0.0	0.0	0.0%	0.0	0.0%	0.1	1.3%
Management Companies	3.7	0.0	0.0	0.0	0.0%	0.0	0.0%	-0.1	-3.1%
Administrative Support	14.1	0.0	0.0	-0.1	-2.8%	0.0	0.0%	0.6	5.4%
Education and Healthcare	35.5	0.0	0.0	0.0	0.0%	0.2	0.7%	-0.4	-1.3%
Leisure and Hospitality	24.4	0.3	0.2	0.6	10.5%	0.3	1.5%	0.5	2.5%
Other Services	10.6	0.0	0.1	0.1	3.9%	-0.1	-1.1%	0.0	0.0%
Total Government	67.0	-0.1	0.2	0.2	1.2%	0.7	1.3%	-0.1	-0.2%
Federal Government	10.3	0.0	0.0	0.0	0.0%	0.2	2.4%	-0.8	-8.5%
State and Local Education	32.8	-0.1	0.0	0.0	0.0%	-0.2	-0.7%	0.5	1.8%
Other State and Local	23.9	0.1	0.1	0.3	5.2%	0.8	4.2%	0.2	1.1%
<b>Household Statistics</b>									
Labor Force	411.8	0.5	-1.7	-1.1	-1.1%	4.2	1.2%	-2.9	-0.8%
Household Employment	373.6	1.6	-2.0	-1.8	-1.9%	4.8	1.6%	0.3	0.1%
Unemployment Rate	9.3%	-0.28%	0.11%	0.19%		-0.24%		-0.71%	

The Fresno MSA is made up of Fresno County only now.