

UCLA ANDERSON FORECAST DATA RELEASE
SEASONALLY ADJUSTED REGIONAL JOB DATA FOR CALIFORNIA
March 2006 Released April 15, 2006

Headline economic data announced for the U.S. economy are invariably published in seasonally adjusted form, and most of the statewide data are so adjusted as well. California is a very large economy, with many highly diverse regional economies. Unfortunately the regional data are not seasonally adjusted by state agencies. As a result, the local data are not amenable to analysis of recent short-run trends in the local economies, since in the absence of seasonal adjustment, analysts typically look at job levels and growth rates compared to those of a year earlier, in order to abstract from seasonal influences. This practice provides a relevant perspective on how regional economic growth has developed over the past year, but it says little or nothing about how regional growth has progressed in recent months.

To address these deficiencies in the local data, the UCLA Anderson Forecast will publish seasonally adjusted versions of employment data for the ten major metropolitan economies within California. On the 2nd Friday of each month, when the unadjusted regional data are released by EDD, our economists will compile seasonally adjusted versions of the major components of payroll employment, aggregate employment within both the household and payroll surveys, and unemployment rates. Soon after the EDD data release we will publish a summary table of our seasonally adjusted employment data for each of the covered metropolitan regions, along with summary charts.

The ten economic regions covered at this time will be Los Angeles County, Orange County, San Diego County, the Riverside-San Bernardino (Inland Empire) economic region, Ventura County, Santa Clara County (San Jose MSA), the San Francisco-San Mateo-Marín metro region (San Francisco MSA), the Alameda-Contra Costa (Oakland MSA) region, the Sacramento-Placer-El Dorado area (Sacramento MSA) and Fresno-Madera region (Fresno MSA).

Any or all of these summary tables can be obtained through the Media Relations Office at the UCLA Anderson School of Management (call Hilary Rehder, 310-206-7707). For our economists' commentary on the data, please refer to the following contact list. If you are unable to reach one of economists please contact Hilary Rehder. For general information about the UCLA Anderson Forecast please call 310-825-1623.

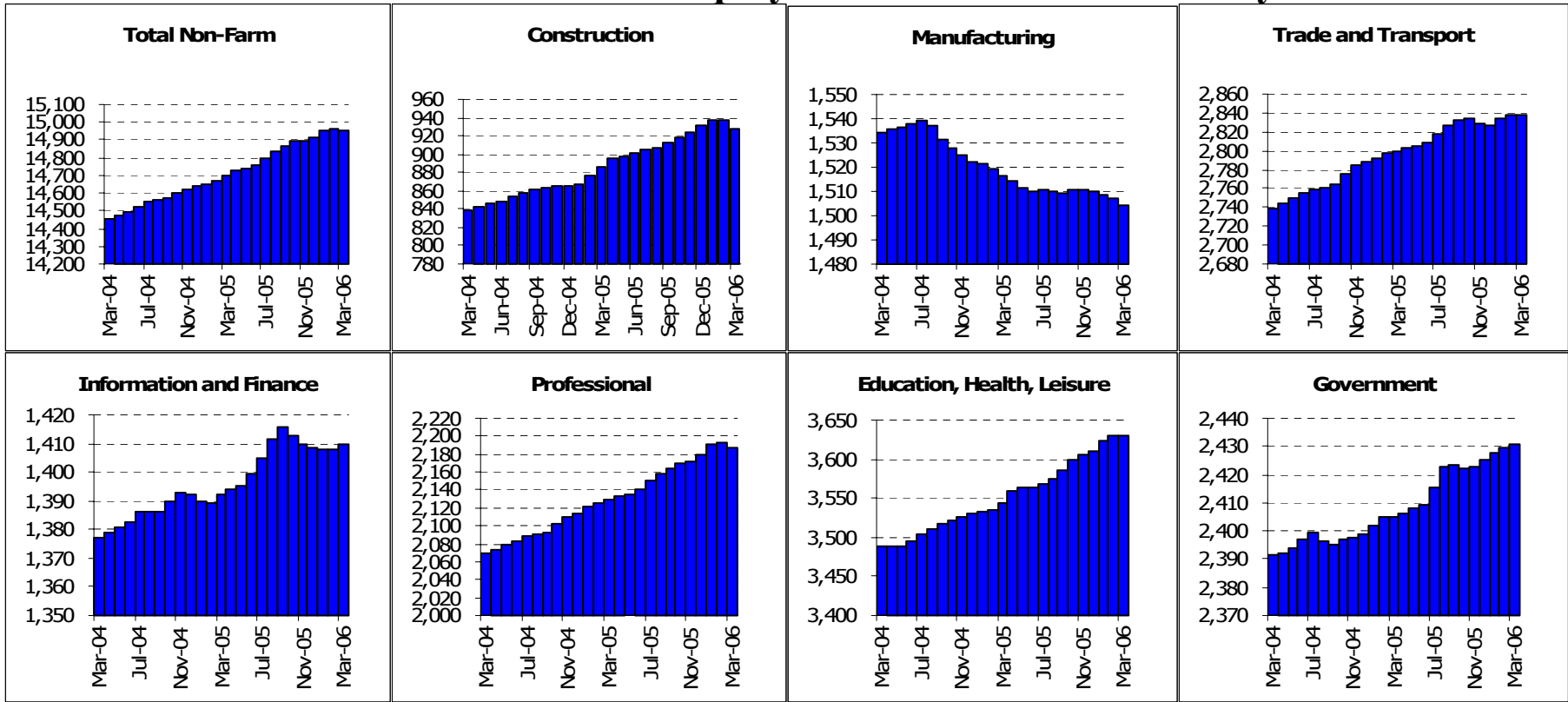
Economist	Contact	Economist	Contact
Christopher Thornberg	310-794-6382 UCLA	Ryan Ratcliff	310-206-4642 UCLA

California Overview

Payroll Employment

	Current	Monthly Change		Quarterly Change		Year-to-date 2006		Year-to-date 2005	
	Level	Feb-06	Jan-06	Quarterly Change		Year-to-date 2006		Year-to-date 2005	
	Mar-06	Mar-06	Feb-06	Abs.	%AR	Abs.	%AR	Abs.	%AR
California	14949.2	-17.5	14.6	33.3	0.9%	33.3	0.9%	61.0	1.7%
Los Angeles	4050.9	2.4	5.2	12.2	1.2%	12.2	1.2%	-1.2	-0.1%
Orange County	1507.6	2.7	4.3	10.0	2.7%	10.0	2.7%	11.5	3.2%
Riverside	1235.7	1.2	1.2	3.5	1.1%	3.5	1.1%	18.1	6.2%
San Diego	1300.2	1.3	3.3	8.9	2.8%	8.9	2.8%	6.6	2.1%
Ventura	296.0	-0.1	0.6	1.8	2.5%	1.8	2.5%	2.6	3.7%
Santa Barbara	172.4	0.0	0.0	-0.1	-0.2%	-0.1	-0.2%	2.0	4.8%
Bakersfield	225.9	0.2	0.7	1.6	2.9%	1.6	2.9%	2.2	4.1%
East Bay	1051.8	-0.5	2.1	5.4	2.1%	5.4	2.1%	2.0	0.8%
San Francisco	952.3	0.7	1.8	4.0	1.7%	4.0	1.7%	1.6	0.7%
San Jose	875.2	2.0	2.5	5.8	2.7%	5.8	2.7%	2.2	1.0%
Sacramento	900.8	1.3	2.5	6.6	3.0%	6.6	3.0%	7.6	3.6%
Santa Rosa	189.1	-0.4	0.4	0.7	1.5%	0.7	1.5%	0.6	1.3%
Fresno	298.6	1.1	1.1	3.5	4.8%	3.5	4.8%	3.1	4.4%

State of California: Employment Charts and Summary

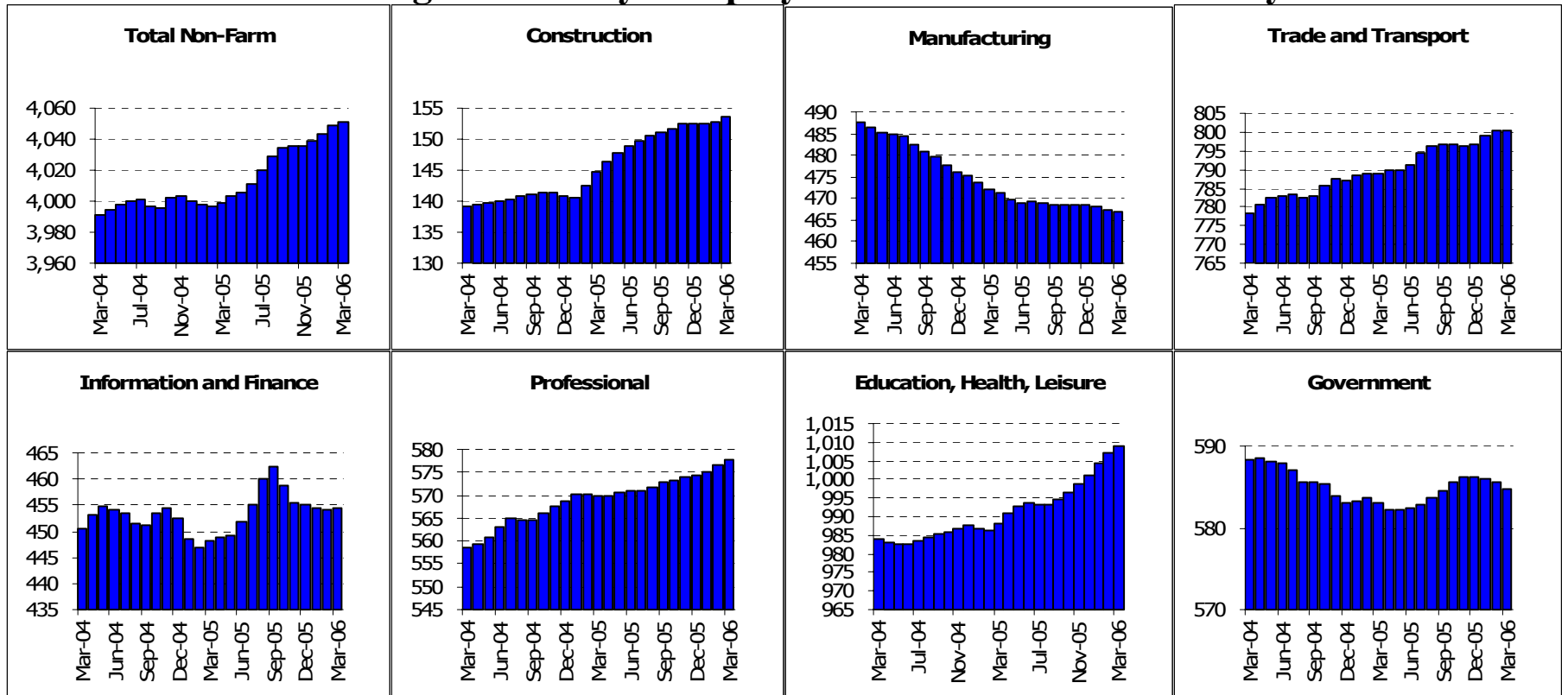


State of California: Employment Tables (thousands)

	Current	Monthly Change		Quarterly Change		Year-to-date 2006		Year-to-date 2005	
	Level	Feb-06	Jan-06	Abs.	%AR	Abs.	%AR	Abs.	%AR
Payroll Statistics	Mar-06	Mar-06	Feb-06	Abs.	%AR	Abs.	%AR	Abs.	%AR
Total Non-Farm	14949.2	-17.5	14.6	33.3	0.9%	33.3	0.9%	61.0	1.7%
Total Private	12518.5	-18.4	12.3	27.7	0.9%	27.7	0.9%	54.8	1.8%
Construction	928.4	-9.1	-0.7	-3.2	-1.4%	-3.2	-1.4%	21.2	10.2%
Durable Manufacturing	963.5	-1.4	-0.7	-1.7	-0.7%	-1.7	-0.7%	-2.9	-1.2%
Non-Durable Manufacturing	540.7	-1.2	-1.1	-3.8	-2.8%	-3.8	-2.8%	-3.2	-2.3%
Wholesale Trade	681.4	0.6	0.9	2.5	1.5%	2.5	1.5%	4.2	2.6%
Retail Trade	1665.7	-0.6	3.3	6.2	1.5%	6.2	1.5%	9.6	2.4%
Transportation and Utilities	490.8	-0.5	0.6	2.1	1.7%	2.1	1.7%	-1.6	-1.3%
Information	467.1	0.9	-1.5	-3.3	-2.8%	-3.3	-2.8%	-6.5	-5.3%
Financial Activities	942.4	0.8	1.6	4.4	1.9%	4.4	1.9%	6.3	2.8%
Professional Services	975.5	0.0	2.9	7.2	3.0%	7.2	3.0%	12.5	5.5%
Management Companies	222.9	-0.9	0.7	2.1	3.9%	2.1	3.9%	-0.3	-0.5%
Administrative Support	988.0	-6.3	-0.5	-1.9	-0.8%	-1.9	-0.8%	2.2	0.9%
Education and Healthcare	1602.8	-0.9	2.8	5.9	1.5%	5.9	1.5%	4.7	1.2%
Leisure and Hospitality	1508.7	1.0	3.4	10.9	2.9%	10.9	2.9%	6.9	1.9%
Other Services	517.7	-0.3	0.6	1.4	1.1%	1.4	1.1%	2.5	2.0%
Total Government	2430.7	0.9	2.3	5.6	0.9%	5.6	0.9%	6.1	1.0%
Federal Government	247.9	0.6	0.4	0.4	0.6%	0.4	0.6%	-0.8	-1.3%
State and Local Education	1156.0	-1.5	0.5	0.3	0.1%	0.3	0.1%	0.9	0.3%
Other State and Local	1026.8	1.8	1.6	5.0	2.0%	5.0	2.0%	6.0	2.4%
Household Statistics									
Labor Force	17678.0	5.3	-42.5	-99.1	-2.2%	-99.1	-2.2%	10.0	0.2%
Household Employment	16834.7	33.7	-39.9	-56.7	-1.3%	-56.7	-1.3%	48.7	1.2%
Unemployment Rate	4.8%	-0.16%	0.00%	-0.21%		-0.21%		-0.22%	

The California EDD also releases seasonally adjusted data for California. As the EDD uses a different algorithm for this process, their numbers may differ from ours on a month to month basis.

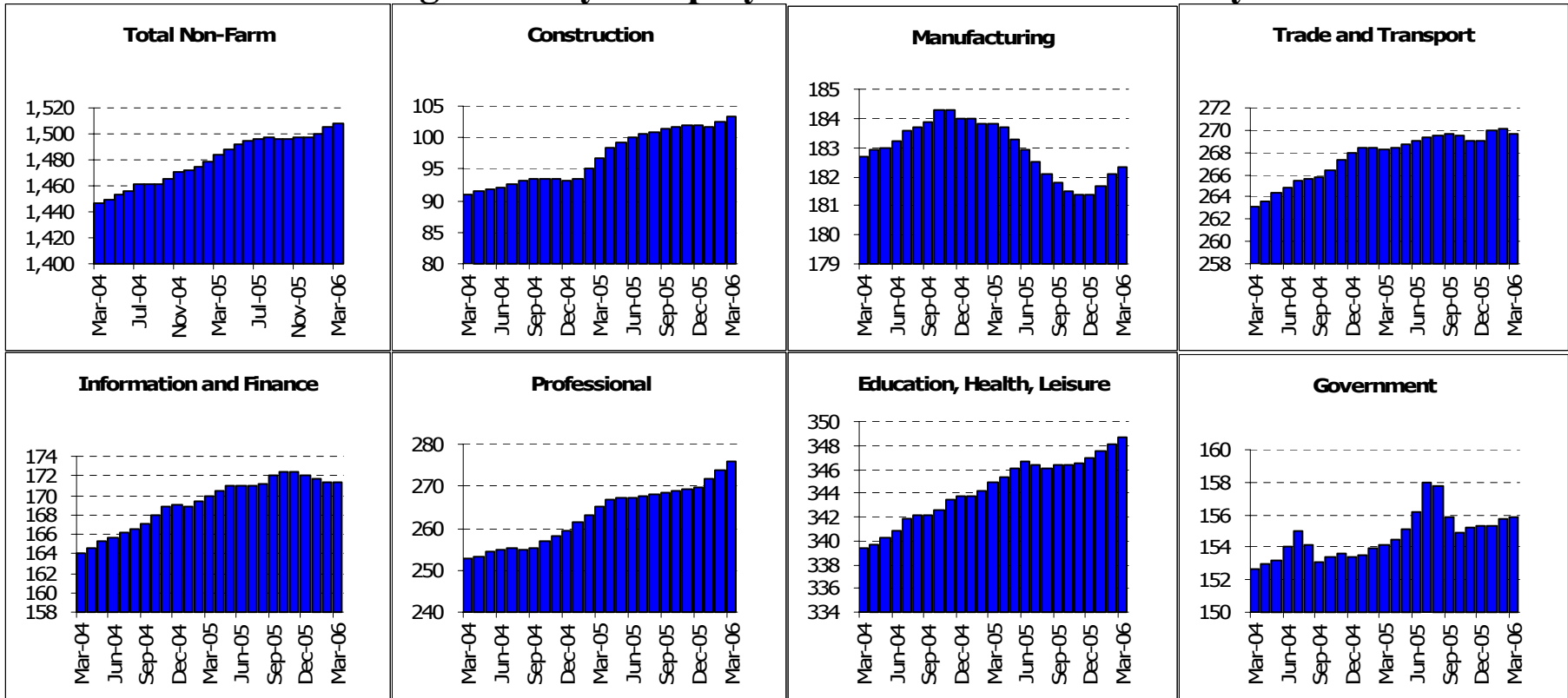
Los Angeles County: Employment Charts and Summary



Los Angeles County: Employment Tables (thousands)

	Current	Monthly Change		Quarterly Change		Year-to-date 2006		Year-to-date 2005	
	Level	Feb-06	Jan-06	Abs.	%AR	Abs.	%AR	Abs.	%AR
Payroll Statistics	Mar-06	Mar-06	Feb-06	Abs.	%AR	Abs.	%AR	Abs.	%AR
Total Non-Farm	4050.9	2.4	5.2	12.2	1.2%	12.2	1.2%	-1.2	-0.1%
Total Private	3466.2	3.4	5.4	13.7	1.6%	13.7	1.6%	-1.0	-0.1%
Construction	153.6	0.7	0.5	1.1	2.9%	1.1	2.9%	4.0	11.9%
Durable Manufacturing	261.1	-0.5	-0.2	-0.3	-0.5%	-0.3	-0.5%	-1.3	-1.9%
Non-Durable Manufacturing	205.9	-0.5	-0.5	-1.5	-2.9%	-1.5	-2.9%	-3.0	-5.6%
Wholesale Trade	219.8	0.2	0.4	0.9	1.7%	0.9	1.7%	0.9	1.7%
Retail Trade	416.4	0.1	1.2	2.6	2.5%	2.6	2.5%	2.1	2.1%
Transportation and Utilities	164.0	0.3	0.7	1.8	4.5%	1.8	4.5%	-1.3	-3.2%
Information	207.4	0.4	-0.8	-1.7	-3.2%	-1.7	-3.2%	-4.7	-8.6%
Financial Activities	247.2	0.2	0.4	1.2	2.0%	1.2	2.0%	0.3	0.5%
Professional Services	253.2	0.5	1.0	2.4	3.9%	2.4	3.9%	2.2	3.7%
Management Companies	70.4	-0.1	0.2	0.6	3.5%	0.6	3.5%	0.2	1.1%
Administrative Support	252.6	-1.2	-0.3	-1.1	-1.7%	-1.1	-1.7%	-1.8	-2.8%
Education and Healthcare	474.1	-0.5	0.6	1.4	1.2%	1.4	1.2%	-0.2	-0.2%
Leisure and Hospitality	386.3	2.3	1.7	5.4	5.8%	5.4	5.8%	0.3	0.3%
Other Services	148.5	0.1	0.3	0.8	2.2%	0.8	2.2%	0.6	1.7%
Total Government	584.7	-0.9	-0.3	-1.5	-1.0%	-1.5	-1.0%	-0.1	-0.1%
Federal Government	53.2	0.0	0.1	0.1	0.8%	0.1	0.8%	-0.2	-1.5%
State and Local Education	293.8	-0.9	-0.5	-1.8	-2.4%	-1.8	-2.4%	-1.4	-1.9%
Other State and Local	237.7	0.1	0.1	0.4	0.7%	0.4	0.7%	1.5	2.6%
Household Statistics									
Labor Force	4878.0	15.1	6.1	20.0	1.7%	20.0	1.7%	-1.6	-0.1%
Household Employment	4638.9	33.8	4.4	33.9	3.0%	33.9	3.0%	10.9	1.0%
Unemployment Rate	4.9%	-0.40%	0.03%	-0.31%		-0.31%		-0.26%	

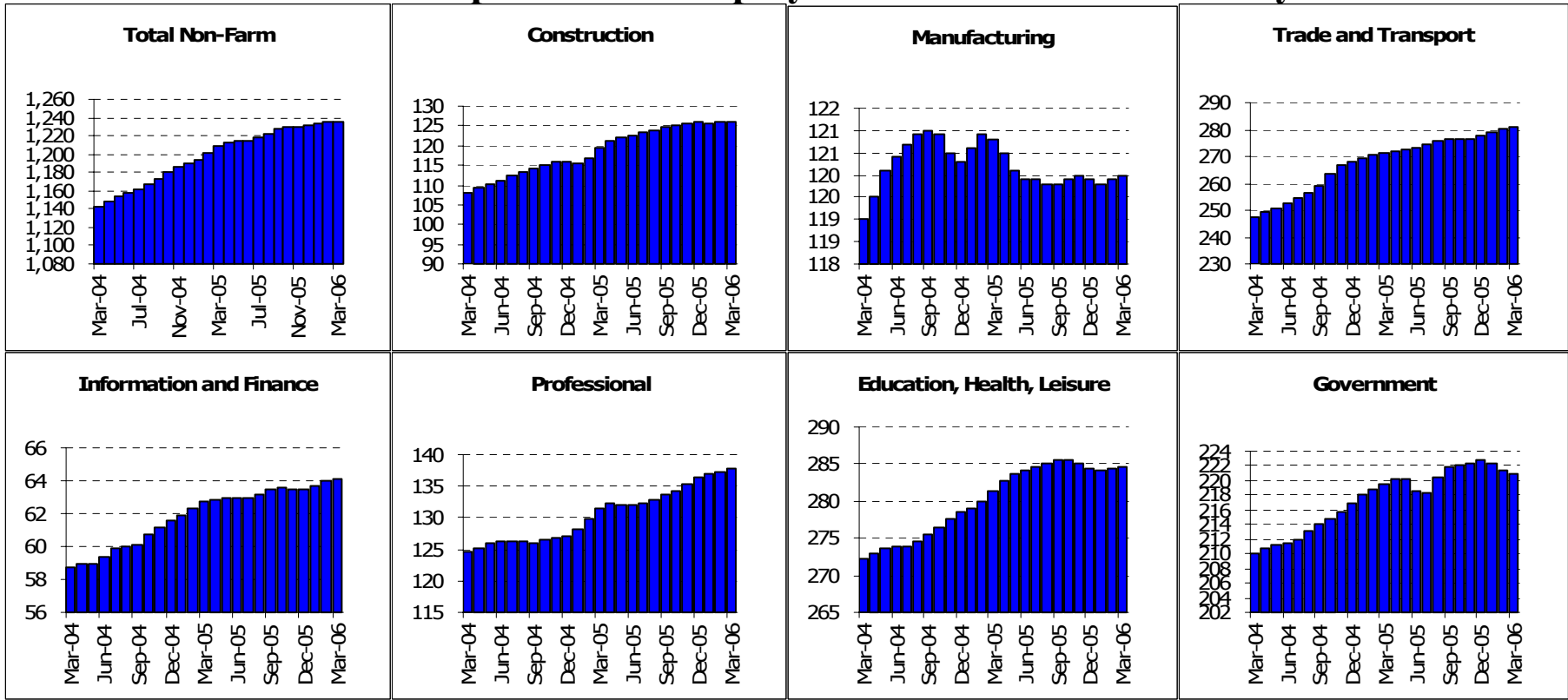
Orange County: Employment Charts and Summary



Orange County: Employment Tables (thousands)

	Current	Monthly Change		Quarterly Change		Year-to-date 2006		Year-to-date 2005	
	Level	Feb-06	Jan-06	Abs.	%AR	Abs.	%AR	Abs.	%AR
Payroll Statistics	Mar-06	Mar-06	Feb-06	Abs.	%AR	Abs.	%AR	Abs.	%AR
Total Non-Farm	1507.6	2.7	4.3	10.0	2.7%	10.0	2.7%	11.5	3.2%
Total Private	1351.8	2.6	4.0	9.5	2.9%	9.5	2.9%	10.8	3.3%
Construction	103.3	0.9	0.6	1.4	5.6%	1.4	5.6%	3.5	15.9%
Durable Manufacturing	128.2	0.0	0.2	0.7	2.2%	0.7	2.2%	0.5	1.6%
Non-Durable Manufacturing	54.1	0.1	0.0	0.2	1.5%	0.2	1.5%	-0.9	-6.3%
Wholesale Trade	82.6	-0.1	-0.1	-0.2	-1.0%	-0.2	-1.0%	0.2	1.0%
Retail Trade	157.8	-0.1	0.5	1.1	2.8%	1.1	2.8%	0.3	0.8%
Transportation and Utilities	29.1	0.0	0.0	0.2	2.8%	0.2	2.8%	-0.2	-2.7%
Information	32.1	-0.1	-0.1	-0.3	-3.7%	-0.3	-3.7%	-0.3	-3.5%
Financial Activities	139.3	0.1	-0.1	-0.4	-1.1%	-0.4	-1.1%	1.1	3.3%
Professional Services	104.6	0.4	0.5	1.3	5.1%	1.3	5.1%	1.5	6.1%
Management Companies	29.9	0.0	-0.1	-0.2	-2.6%	-0.2	-2.6%	-0.3	-3.8%
Administrative Support	140.5	0.6	1.5	4.1	12.6%	4.1	12.6%	4.2	13.7%
Education and Healthcare	134.8	0.0	0.1	0.3	0.9%	0.3	0.9%	0.7	2.1%
Leisure and Hospitality	165.4	0.6	0.5	1.4	3.5%	1.4	3.5%	-0.1	-0.2%
Other Services	48.5	0.0	0.0	0.1	0.8%	0.1	0.8%	0.5	4.3%
Total Government	155.8	0.1	0.4	0.5	1.3%	0.5	1.3%	0.7	1.8%
Federal Government	11.3	0.0	-0.1	-0.1	-3.5%	-0.1	-3.5%	-0.1	-3.4%
State and Local Education	91.5	0.1	0.3	0.3	1.3%	0.3	1.3%	0.5	2.2%
Other State and Local	53.0	0.2	0.1	0.4	3.1%	0.4	3.1%	0.3	2.3%
Household Statistics									
Labor Force	1591.7	-2.5	-4.7	-13.0	-3.2%	-13.0	-3.2%	0.5	0.1%
Household Employment	1540.5	0.4	-3.2	-7.3	-1.9%	-7.3	-1.9%	3.3	0.9%
Unemployment Rate	3.2%	-0.18%	-0.08%	-0.33%		-0.33%		-0.18%	

Inland Empire MSA: Employment Charts and Summary

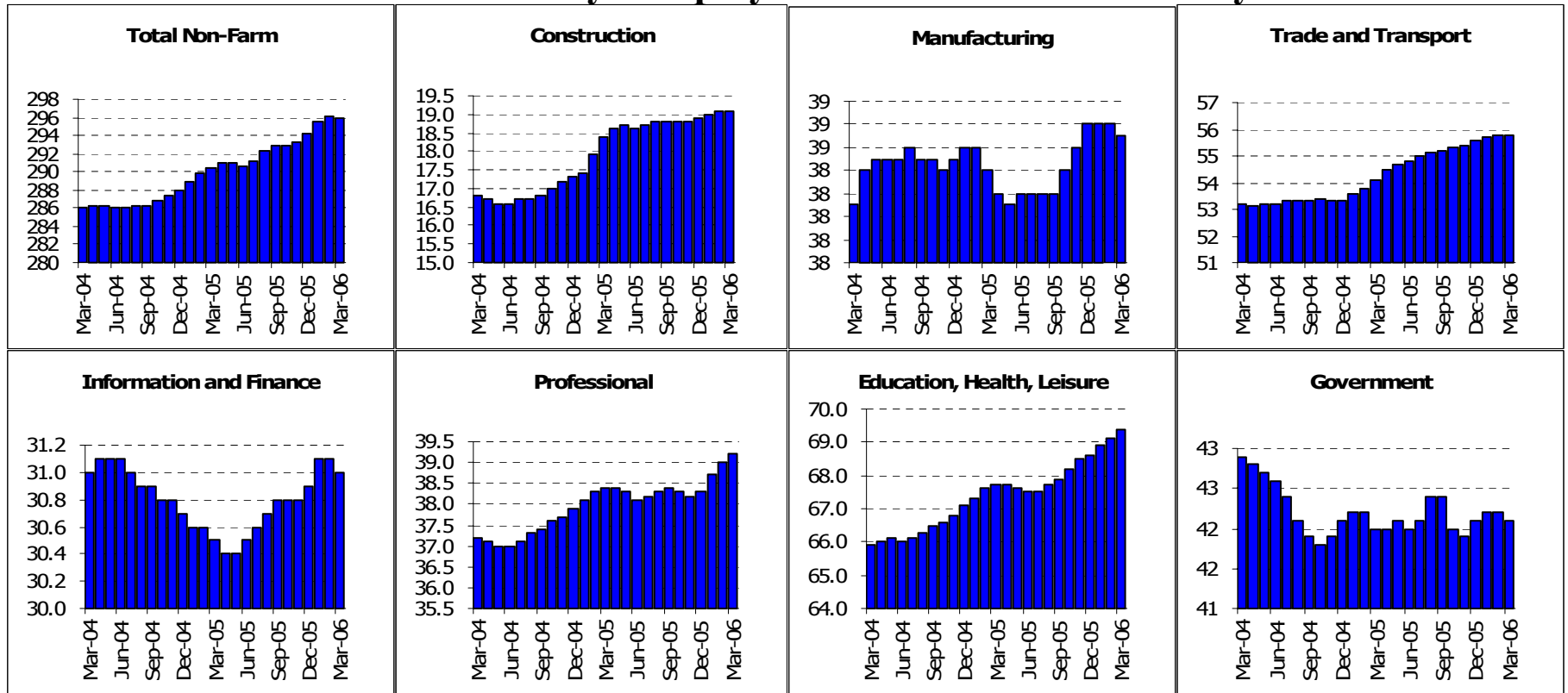


Inland Empire MSA: Employment Tables (thousands)

	Current	Monthly Change		Quarterly Change		Year-to-date 2006		Year-to-date 2005	
	Level	Feb-06	Jan-06	Abs.	%AR	Abs.	%AR	Abs.	%AR
Payroll Statistics	Mar-06	Mar-06	Feb-06	Abs.	%AR	Abs.	%AR	Abs.	%AR
Total Non-Farm	1235.7	1.2	1.2	3.5	1.1%	3.5	1.1%	18.1	6.2%
Total Private	1014.7	1.7	2.1	5.2	2.1%	5.2	2.1%	15.5	6.5%
Construction	126.1	0.2	0.1	0.1	0.3%	0.1	0.3%	3.6	13.0%
Durable Manufacturing	85.6	0.0	0.1	0.1	0.5%	0.1	0.5%	-0.2	-0.9%
Non-Durable Manufacturing	34.4	0.0	0.0	0.0	0.0%	0.0	0.0%	0.6	7.2%
Wholesale Trade	50.9	0.1	0.2	0.7	5.7%	0.7	5.7%	0.3	2.5%
Retail Trade	168.1	0.5	0.8	1.9	4.7%	1.9	4.7%	1.8	4.5%
Transportation and Utilities	61.6	0.3	0.4	1.1	7.5%	1.1	7.5%	1.1	7.7%
Information	14.5	0.1	0.1	0.3	8.7%	0.3	8.7%	0.3	8.7%
Financial Activities	49.6	0.0	0.2	0.3	2.5%	0.3	2.5%	0.8	6.9%
Professional Services	35.1	0.2	-0.1	-0.1	-1.1%	-0.1	-1.1%	0.9	11.6%
Management Companies	12.8	0.0	0.1	0.2	6.5%	0.2	6.5%	0.0	0.0%
Administrative Support	89.5	-0.1	0.2	1.0	4.6%	1.0	4.6%	3.3	16.9%
Education and Healthcare	120.7	0.2	0.2	0.3	1.0%	0.3	1.0%	0.8	2.7%
Leisure and Hospitality	122.5	0.1	0.1	0.0	0.0%	0.0	0.0%	1.2	4.1%
Other Services	41.5	0.1	-0.1	-0.1	-1.0%	-0.1	-1.0%	0.9	9.3%
Total Government	221.0	-0.5	-0.8	-1.7	-3.0%	-1.7	-3.0%	2.7	5.1%
Federal Government	18.6	0.0	0.0	-0.1	-2.1%	-0.1	-2.1%	0.4	9.4%
State and Local Education	107.7	-0.6	-1.1	-2.4	-8.4%	-2.4	-8.4%	0.1	0.4%
Other State and Local	94.7	0.3	0.3	1.0	4.3%	1.0	4.3%	2.1	9.7%
Household Statistics									
Labor Force	1706.5	-1.8	-7.4	-17.3	-4.0%	-17.3	-4.0%	11.3	2.7%
Household Employment	1630.5	0.0	-6.2	-12.3	-3.0%	-12.3	-3.0%	14.3	3.6%
Unemployment Rate	4.5%	-0.10%	-0.05%	-0.25%		-0.25%		-0.21%	

The Inland Empire is made up of Riverside and San Bernardino counties

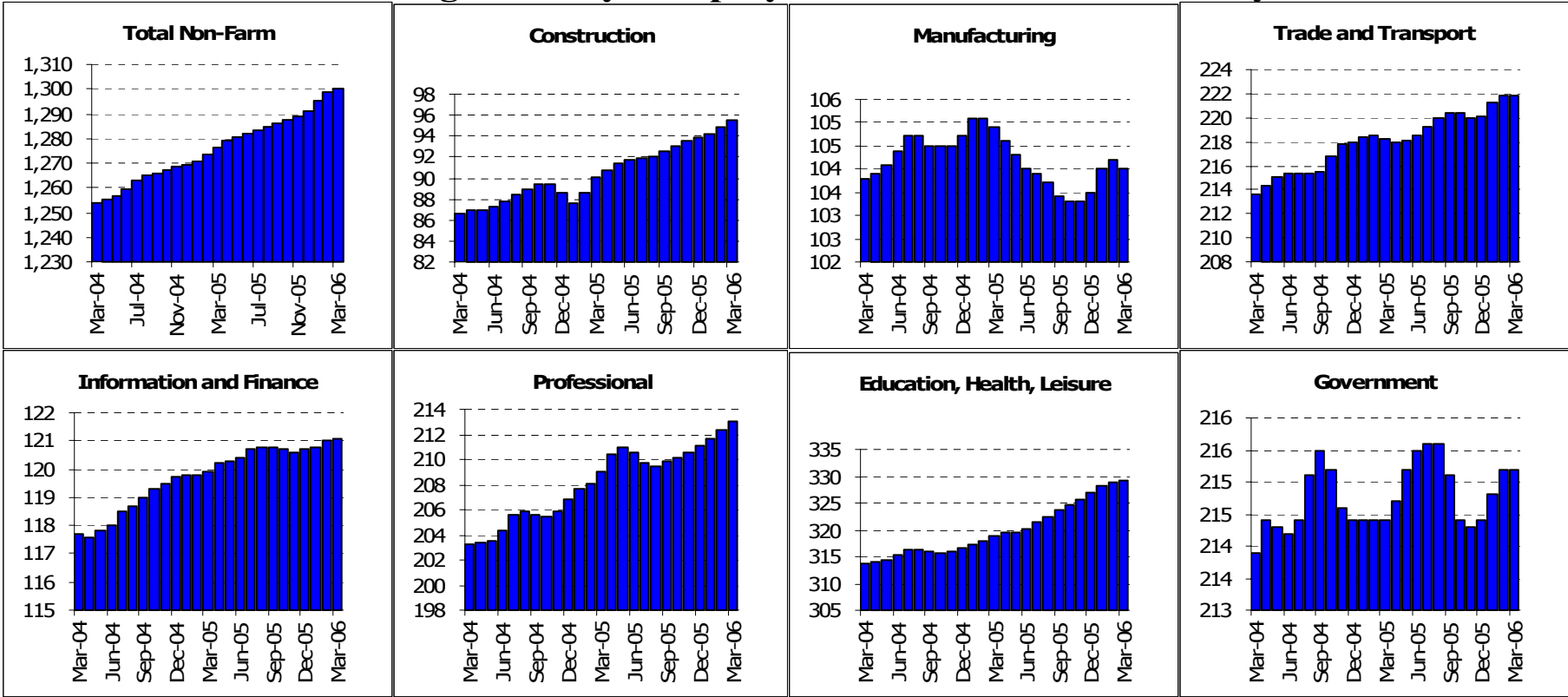
Ventura County: Employment Charts and Summary



Ventura County: Employment Tables (thousands)

	Current	Monthly Change		Quarterly Change		Year-to-date 2006		Year-to-date 2005	
	Level	Feb-06	Jan-06	Abs.	%AR	Abs.	%AR	Abs.	%AR
Payroll Statistics	Mar-06	Mar-06	Feb-06	Abs.	%AR	Abs.	%AR	Abs.	%AR
Total Non-Farm	296.0	-0.1	0.6	1.8	2.5%	1.8	2.5%	2.6	3.7%
Total Private	253.9	0.0	0.7	1.8	2.9%	1.8	2.9%	2.6	4.3%
Construction	19.1	0.0	0.1	0.2	4.3%	0.2	4.3%	1.1	28.0%
Durable Manufacturing	24.3	-0.1	-0.1	-0.2	-3.2%	-0.2	-3.2%	0.0	0.0%
Non-Durable Manufacturing	14.4	0.0	0.1	0.2	5.8%	0.2	5.8%	0.0	0.0%
Wholesale Trade	12.7	0.0	0.0	0.0	0.0%	0.0	0.0%	-0.1	-3.2%
Retail Trade	37.1	0.2	0.0	0.2	2.2%	0.2	2.2%	0.7	8.2%
Transportation and Utilities	6.0	0.1	0.0	0.1	7.0%	0.1	7.0%	0.0	0.0%
Information	6.0	-0.1	-0.1	-0.1	-6.4%	-0.1	-6.4%	-0.2	-12.1%
Financial Activities	25.0	0.0	0.1	0.2	3.3%	0.2	3.3%	0.0	0.0%
Professional Services	15.6	0.1	0.2	0.6	17.0%	0.6	17.0%	0.2	5.6%
Management Companies	3.6	0.0	0.0	0.0	0.0%	0.0	0.0%	-0.1	-10.7%
Administrative Support	19.9	0.0	0.1	0.3	6.3%	0.3	6.3%	0.3	6.2%
Education and Healthcare	29.3	0.0	0.1	0.2	2.8%	0.2	2.8%	0.4	5.9%
Leisure and Hospitality	29.7	0.3	0.1	0.6	8.5%	0.6	8.5%	0.1	1.4%
Other Services	10.4	0.0	0.0	0.0	0.0%	0.0	0.0%	0.1	3.9%
Total Government	42.1	-0.1	0.0	0.0	0.0%	0.0	0.0%	-0.1	-0.9%
Federal Government	7.2	0.0	0.0	-0.1	-5.4%	-0.1	-5.4%	-0.1	-5.2%
State and Local Education	18.9	-0.1	-0.1	0.0	0.0%	0.0	0.0%	0.3	6.5%
Other State and Local	16.6	0.1	0.1	0.1	2.4%	0.1	2.4%	-0.2	-4.8%
Household Statistics									
Labor Force	419.0	-0.4	-1.4	-3.2	-3.0%	-3.2	-3.0%	2.2	2.1%
Household Employment	401.4	0.1	-1.4	-2.7	-2.6%	-2.7	-2.6%	2.6	2.7%
Unemployment Rate	4.2%	-0.12%	0.01%	-0.09%		-0.09%		-0.12%	

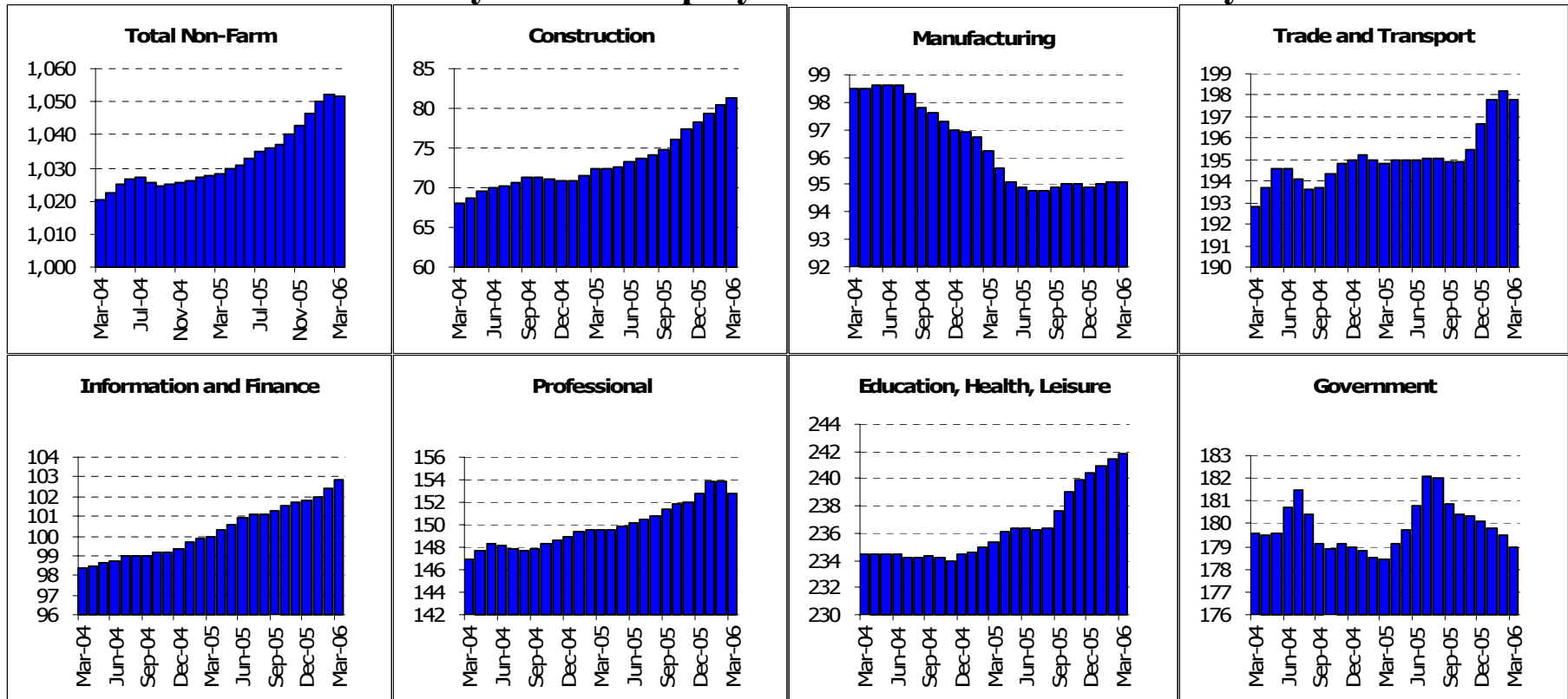
San Diego County: Employment Charts and Summary



San Diego County: Employment Tables (thousands)

	Current	Monthly Change		Quarterly Change		Year-to-date 2006		Year-to-date 2005	
	Level	Feb-06	Jan-06	Abs.	%AR	Abs.	%AR	Abs.	%AR
Payroll Statistics	Mar-06	Mar-06	Feb-06	Abs.	%AR	Abs.	%AR	Abs.	%AR
Total Non-Farm	1300.2	1.3	3.3	8.9	2.8%	8.9	2.8%	6.6	2.1%
Total Private	1085.0	1.3	3.0	8.2	3.1%	8.2	3.1%	6.6	2.5%
Construction	95.5	0.6	0.7	1.6	7.0%	1.6	7.0%	1.5	6.9%
Durable Manufacturing	78.5	-0.2	0.2	0.5	2.6%	0.5	2.6%	0.5	2.6%
Non-Durable Manufacturing	25.5	-0.1	0.0	0.0	0.0%	0.0	0.0%	-0.4	-6.1%
Wholesale Trade	45.3	0.1	0.1	0.5	4.5%	0.5	4.5%	0.4	3.8%
Retail Trade	147.8	0.3	0.7	1.8	5.0%	1.8	5.0%	0.1	0.3%
Transportation and Utilities	28.7	-0.1	0.0	0.0	0.0%	0.0	0.0%	-0.4	-5.4%
Information	37.1	0.2	0.1	0.2	2.2%	0.2	2.2%	0.2	2.2%
Financial Activities	84.0	-0.1	0.1	0.2	1.0%	0.2	1.0%	0.0	0.0%
Professional Services	106.1	0.2	0.0	0.4	1.5%	0.4	1.5%	2.6	10.7%
Management Companies	17.8	0.0	0.1	0.1	2.3%	0.1	2.3%	-0.1	-2.3%
Administrative Support	88.5	-0.2	0.2	0.8	3.7%	0.8	3.7%	-0.2	-0.9%
Education and Healthcare	125.3	-0.1	0.3	1.0	3.3%	1.0	3.3%	0.4	1.3%
Leisure and Hospitality	154.8	0.3	0.4	1.1	2.9%	1.1	2.9%	1.5	4.2%
Other Services	49.0	0.1	0.0	0.2	1.6%	0.2	1.6%	0.3	2.5%
Total Government	215.2	0.0	0.4	0.8	1.5%	0.8	1.5%	0.0	0.0%
Federal Government	39.1	0.0	0.1	0.1	1.0%	0.1	1.0%	-0.2	-2.0%
State and Local Education	98.4	0.1	0.2	0.3	1.2%	0.3	1.2%	-0.2	-0.8%
Other State and Local	77.7	0.0	0.1	0.5	2.6%	0.5	2.6%	0.4	2.1%
Household Statistics									
Labor Force	1501.3	-1.3	-4.0	-9.3	-2.4%	-9.3	-2.4%	0.1	0.0%
Household Employment	1446.3	2.8	-2.8	-2.7	-0.7%	-2.7	-0.7%	2.0	0.6%
Unemployment Rate	3.7%	-0.27%	-0.07%	-0.41%		-0.41%		-0.13%	

East Bay MSA: Employment Charts and Summary

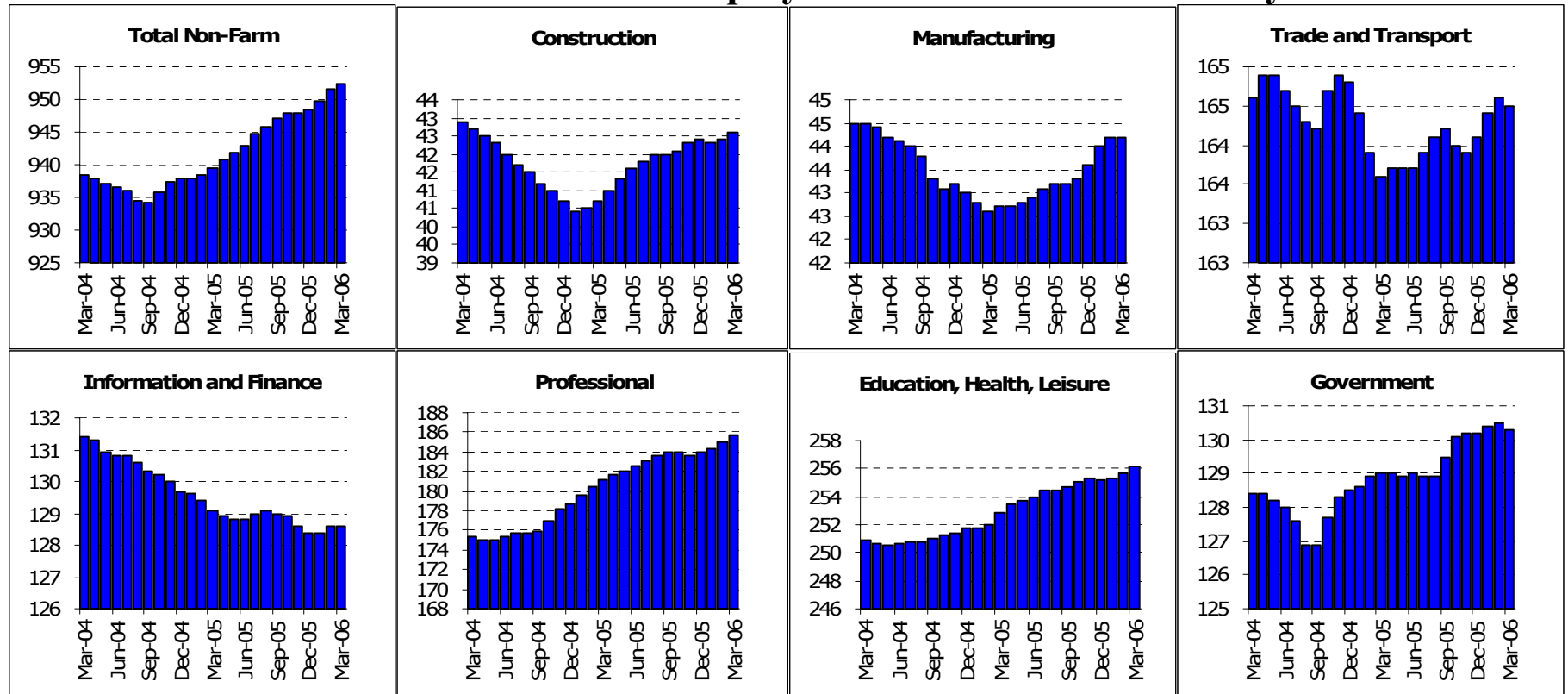


East Bay MSA: Employment Tables (thousands)

	Current	Monthly Change		Quarterly Change		Year-to-date 2006		Year-to-date 2005	
	Level	Feb-06	Jan-06	Abs.	%AR	Abs.	%AR	Abs.	%AR
Payroll Statistics	Mar-06	Mar-06	Feb-06						
Total Non-Farm	1051.8	-0.5	2.1	5.4	2.1%	5.4	2.1%	2.0	0.8%
Total Private	872.8	0.0	2.5	6.5	3.0%	6.5	3.0%	2.6	1.2%
Construction	81.4	0.9	1.2	3.2	17.4%	3.2	17.4%	1.6	9.3%
Durable Manufacturing	60.0	-0.1	0.2	0.3	2.0%	0.3	2.0%	-0.4	-2.6%
Non-Durable Manufacturing	35.1	0.0	-0.1	-0.1	-1.1%	-0.1	-1.1%	-0.5	-5.5%
Wholesale Trade	48.5	-0.3	0.2	0.3	2.5%	0.3	2.5%	-0.9	-7.1%
Retail Trade	114.8	0.2	0.4	1.2	4.3%	1.2	4.3%	0.7	2.5%
Transportation and Utilities	34.4	-0.1	0.0	0.0	0.0%	0.0	0.0%	0.0	0.0%
Information	30.0	0.2	0.1	0.3	4.1%	0.3	4.1%	0.0	0.0%
Financial Activities	72.9	0.3	0.3	0.8	4.5%	0.8	4.5%	0.7	4.1%
Professional Services	72.2	-0.4	-0.2	-0.3	-1.6%	-0.3	-1.6%	0.6	3.4%
Management Companies	22.0	0.1	0.3	0.8	16.0%	0.8	16.0%	-0.1	-1.8%
Administrative Support	58.1	-1.2	-0.3	-0.9	-6.0%	-0.9	-6.0%	0.0	0.0%
Education and Healthcare	120.7	0.2	0.0	0.4	1.3%	0.4	1.3%	0.4	1.4%
Leisure and Hospitality	85.5	0.3	0.5	1.3	6.3%	1.3	6.3%	0.7	3.5%
Other Services	35.6	-0.1	-0.1	-0.3	-3.3%	-0.3	-3.3%	-0.1	-1.1%
Total Government	179.0	-0.5	-0.3	-1.1	-2.4%	-1.1	-2.4%	-0.6	-1.3%
Federal Government	17.2	0.0	-0.1	-0.2	-4.5%	-0.2	-4.5%	0.0	0.0%
State and Local Education	84.9	-0.4	0.1	-0.3	-1.4%	-0.3	-1.4%	-0.6	-2.8%
Other State and Local	76.9	-0.1	-0.2	-0.4	-2.1%	-0.4	-2.1%	0.0	0.0%
Household Statistics									
Labor Force	1254.5	-1.0	-5.5	-11.4	-3.6%	-11.4	-3.6%	-6.0	-1.9%
Household Employment	1202.7	2.0	-4.0	-4.9	-1.6%	-4.9	-1.6%	-2.6	-0.9%
Unemployment Rate	4.1%	-0.24%	-0.10%	-0.48%		-0.48%		-0.25%	

East Bay is also known as the Oakland MSA. It is made up of Alameda and Contra Costa counties.

San Francisco MSA: Employment Charts and Summary

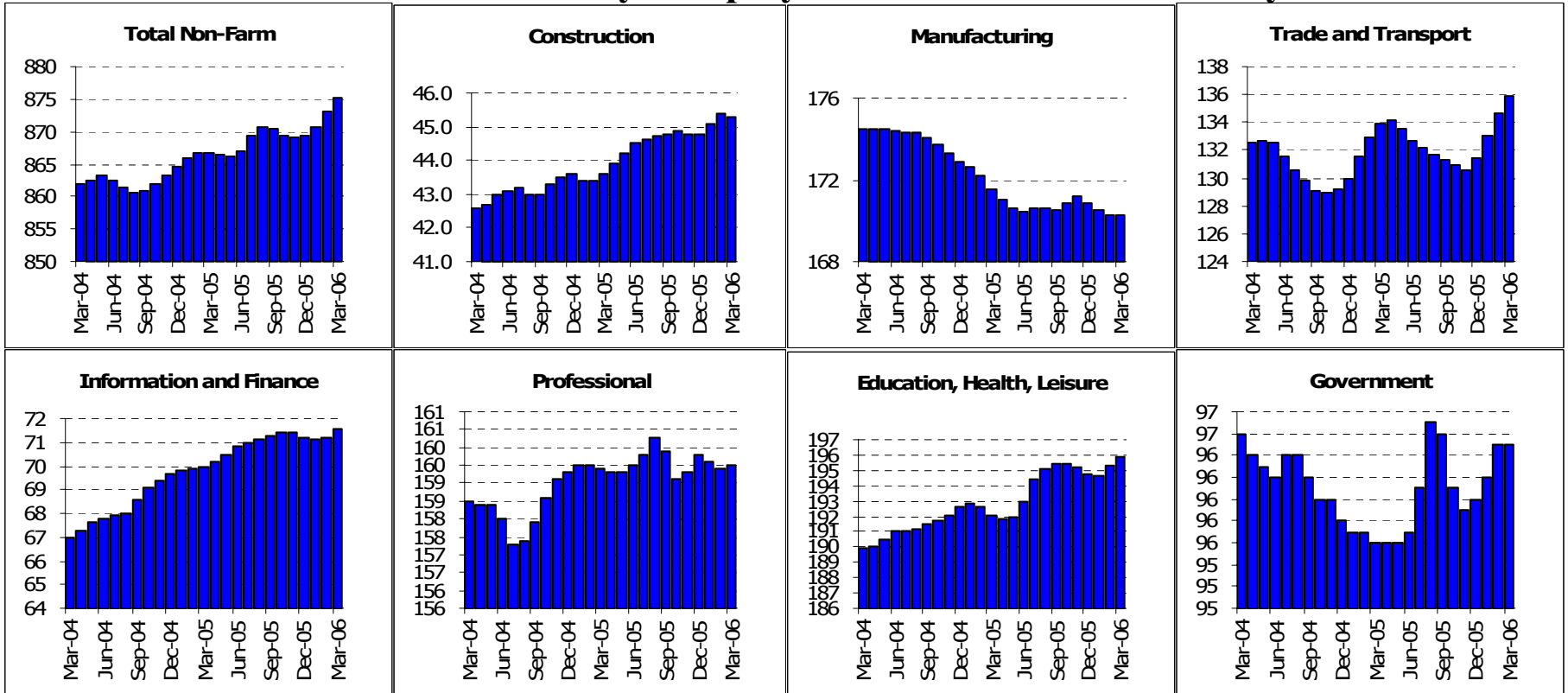


San Francisco MSA: Employment Tables (thousands)

	Current	Monthly Change		Quarterly Change		Year-to-date 2006		Year-to-date 2005	
	Level	Feb-06	Jan-06	Abs.	%AR	Abs.	%AR	Abs.	%AR
Payroll Statistics	Mar-06	Mar-06	Feb-06	Abs.	%AR	Abs.	%AR	Abs.	%AR
Total Non-Farm	952.3	0.7	1.8	4.0	1.7%	4.0	1.7%	1.6	0.7%
Total Private	822.0	1.0	1.6	4.0	2.0%	4.0	2.0%	1.1	0.5%
Construction	42.6	0.2	0.1	0.2	1.9%	0.2	1.9%	0.0	0.0%
Durable Manufacturing	21.3	0.0	0.1	0.2	3.8%	0.2	3.8%	-0.1	-1.9%
Non-Durable Manufacturing	22.9	0.0	0.1	0.4	7.3%	0.4	7.3%	-0.4	-7.1%
Wholesale Trade	26.8	0.1	0.1	0.3	4.6%	0.3	4.6%	-0.2	-3.0%
Retail Trade	94.9	0.2	0.2	0.6	2.6%	0.6	2.6%	-0.2	-0.9%
Transportation and Utilities	42.7	-0.2	0.0	-0.2	-1.9%	-0.2	-1.9%	-1.0	-8.7%
Information	40.0	-0.1	0.0	-0.2	-2.0%	-0.2	-2.0%	-0.7	-6.4%
Financial Activities	88.6	0.1	0.2	0.4	1.8%	0.4	1.8%	0.1	0.5%
Professional Services	108.7	0.2	0.3	1.0	3.8%	1.0	3.8%	1.8	7.1%
Management Companies	20.0	0.0	0.0	0.0	0.0%	0.0	0.0%	0.1	1.9%
Administrative Support	56.5	-0.1	0.1	0.3	2.2%	0.3	2.2%	0.6	4.5%
Education and Healthcare	101.1	-0.1	-0.1	-0.3	-1.2%	-0.3	-1.2%	0.5	2.0%
Leisure and Hospitality	117.7	0.6	0.5	1.3	4.5%	1.3	4.5%	0.4	1.4%
Other Services	37.4	0.0	0.0	0.0	0.0%	0.0	0.0%	0.1	1.1%
Total Government	130.3	-0.2	0.1	0.1	0.3%	0.1	0.3%	0.5	1.6%
Federal Government	20.2	-0.1	0.0	-0.2	-3.9%	-0.2	-3.9%	-0.2	-3.8%
State and Local Education	49.4	0.0	0.1	0.2	1.6%	0.2	1.6%	0.3	2.5%
Other State and Local	60.7	0.0	0.1	0.1	0.7%	0.1	0.7%	0.5	3.4%
Household Statistics									
Labor Force	904.4	-1.6	-3.7	-9.6	-4.1%	-9.6	-4.1%	-5.2	-2.3%
Household Employment	870.3	1.3	-2.4	-4.4	-2.0%	-4.4	-2.0%	-2.0	-0.9%
Unemployment Rate	3.8%	-0.31%	-0.13%	-0.53%		-0.53%		-0.32%	

The San Francisco MSA includes Marin, San Francisco and San Mateo counties

Santa Clara County: Employment Charts and Summary

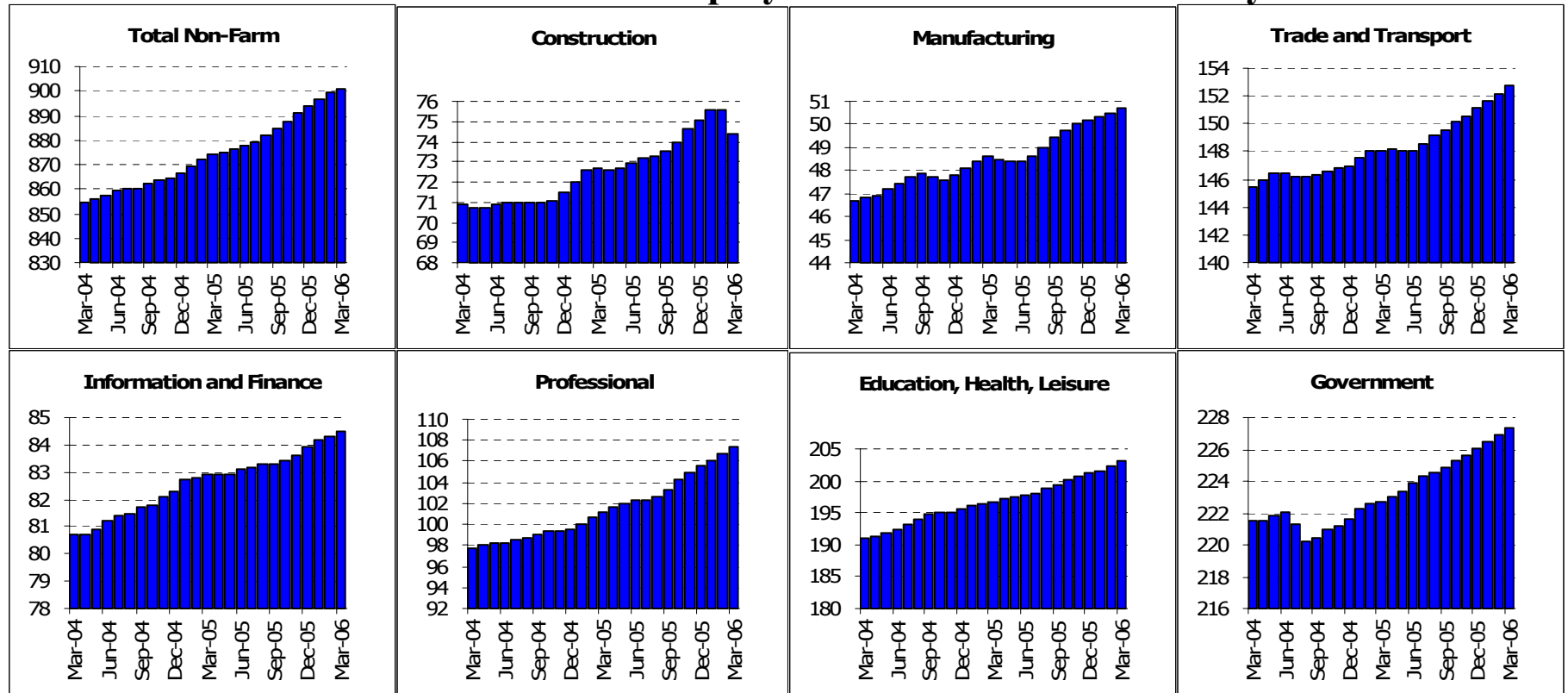


Santa Clara County: Employment Tables (thousands)

	Current	Monthly Change		Quarterly Change		Year-to-date 2006		Year-to-date 2005	
	Level	Feb-06	Jan-06	Abs.	%AR	Abs.	%AR	Abs.	%AR
Payroll Statistics	Mar-06	Mar-06	Feb-06	Abs.	%AR	Abs.	%AR	Abs.	%AR
Total Non-Farm	875.2	2.0	2.5	5.8	2.7%	5.8	2.7%	2.2	1.0%
Total Private	778.7	2.0	2.2	5.3	2.8%	5.3	2.8%	2.4	1.3%
Construction	45.3	-0.1	0.3	0.5	4.5%	0.5	4.5%	0.0	0.0%
Durable Manufacturing	157.7	-0.3	-0.2	-0.6	-1.5%	-0.6	-1.5%	-1.6	-3.9%
Non-Durable Manufacturing	12.6	0.2	0.0	0.0	0.0%	0.0	0.0%	0.1	3.5%
Wholesale Trade	39.6	1.4	1.6	4.4	60.2%	4.4	60.2%	3.6	49.9%
Retail Trade	83.3	0.1	0.1	0.5	2.4%	0.5	2.4%	0.3	1.5%
Transportation and Utilities	13.0	0.0	0.0	-0.1	-3.0%	-0.1	-3.0%	-0.1	-3.0%
Information	35.5	0.4	0.1	0.5	5.8%	0.5	5.8%	0.3	3.6%
Financial Activities	36.1	0.0	0.0	-0.1	-1.1%	-0.1	-1.1%	0.0	0.0%
Professional Services	100.6	0.4	0.3	0.7	2.8%	0.7	2.8%	0.5	2.1%
Management Companies	7.9	0.0	0.0	-0.1	-4.9%	-0.1	-4.9%	-0.3	-13.4%
Administrative Support	50.5	-0.8	-0.7	-1.4	-10.4%	-1.4	-10.4%	-0.2	-1.5%
Education and Healthcare	96.9	0.0	0.2	0.1	0.4%	0.1	0.4%	-0.3	-1.2%
Leisure and Hospitality	73.8	0.5	0.4	0.9	5.0%	0.9	5.0%	-0.1	-0.6%
Other Services	25.2	0.1	0.1	0.2	3.2%	0.2	3.2%	-0.1	-1.6%
Total Government	96.5	0.0	0.3	0.5	2.1%	0.5	2.1%	-0.2	-0.8%
Federal Government	11.0	0.0	-0.1	-0.1	-3.6%	-0.1	-3.6%	-0.2	-6.8%
State and Local Education	46.8	0.2	0.2	0.6	5.3%	0.6	5.3%	0.1	0.9%
Other State and Local	38.7	0.0	0.1	0.1	1.0%	0.1	1.0%	-0.1	-1.0%
Household Statistics									
Labor Force	834.1	-2.6	-4.8	-12.5	-5.8%	-12.5	-5.8%	-6.2	-2.9%
Household Employment	798.2	1.2	-2.9	-5.3	-2.6%	-5.3	-2.6%	-2.4	-1.2%
Unemployment Rate	4.3%	-0.44%	-0.20%	-0.79%		-0.79%		-0.41%	

The San Jose MSA is Santa Clara and San Benito counties.

Sacramento MSA: Employment Charts and Summary

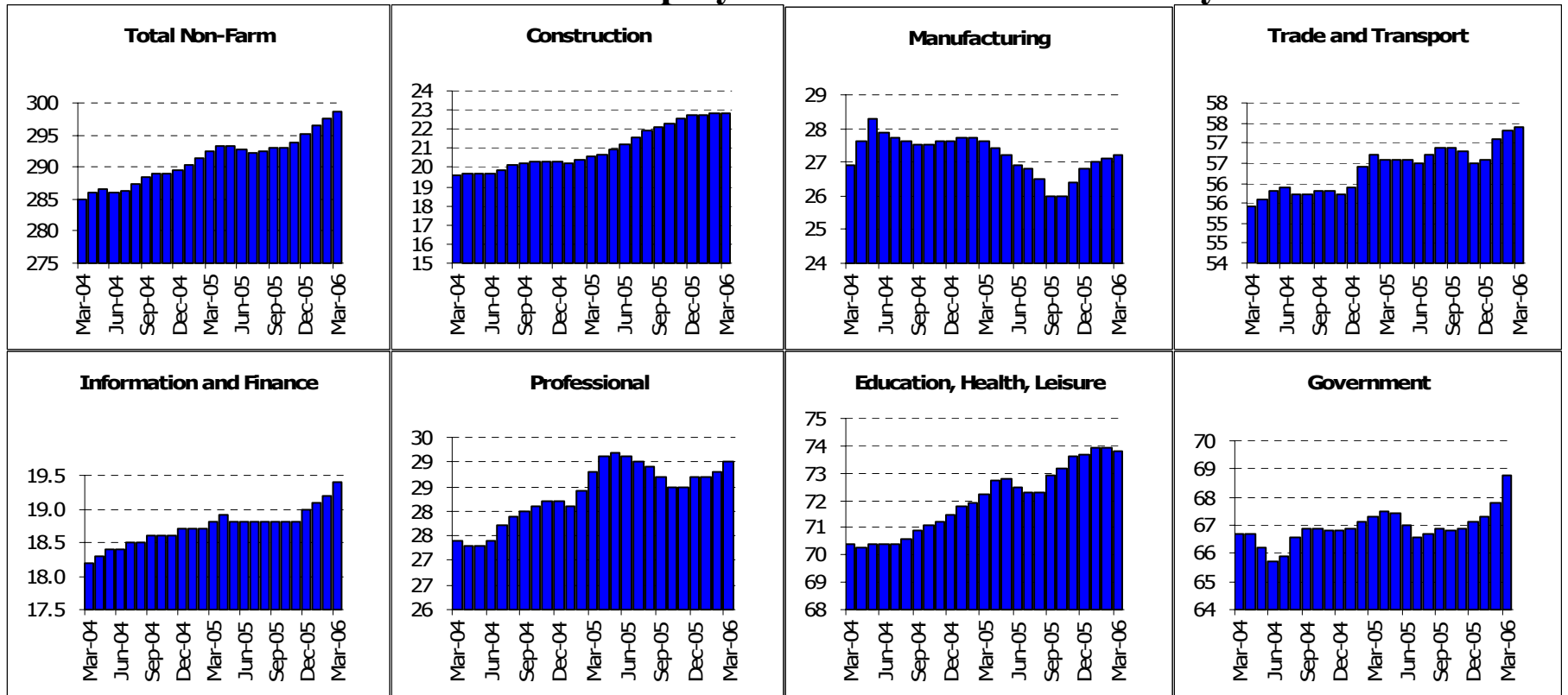


Sacramento MSA: Employment Tables (thousands)

	Current	Monthly Change		Quarterly Change		Year-to-date 2006		Year-to-date 2005	
	Level	Feb-06	Jan-06	Abs.	%AR	Abs.	%AR	Abs.	%AR
Payroll Statistics	Mar-06	Mar-06	Feb-06	Abs.	%AR	Abs.	%AR	Abs.	%AR
Total Non-Farm	900.8	1.3	2.5	6.6	3.0%	6.6	3.0%	7.6	3.6%
Total Private	673.5	1.0	2.1	5.4	3.3%	5.4	3.3%	6.5	4.1%
Construction	74.4	-1.2	0.0	-0.7	-3.7%	-0.7	-3.7%	1.2	6.9%
Durable Manufacturing	36.9	0.2	0.2	0.6	6.8%	0.6	6.8%	0.8	9.6%
Non-Durable Manufacturing	13.8	0.0	0.0	-0.1	-2.8%	-0.1	-2.8%	0.0	0.0%
Wholesale Trade	27.4	0.1	0.1	0.3	4.5%	0.3	4.5%	0.1	1.5%
Retail Trade	101.5	0.6	0.5	1.6	6.6%	1.6	6.6%	0.9	3.8%
Transportation and Utilities	23.8	0.1	0.0	0.1	1.7%	0.1	1.7%	0.2	3.5%
Information	19.6	0.0	0.0	0.0	0.0%	0.0	0.0%	-0.3	-5.7%
Financial Activities	64.9	0.2	0.1	0.6	3.8%	0.6	3.8%	0.9	6.0%
Professional Services	46.3	0.1	0.1	0.2	1.7%	0.2	1.7%	0.8	7.5%
Management Companies	9.2	0.0	0.0	0.0	0.0%	0.0	0.0%	-0.1	-4.2%
Administrative Support	51.6	0.3	0.3	1.3	10.7%	1.3	10.7%	1.2	10.8%
Education and Healthcare	88.3	0.3	0.1	0.4	1.8%	0.4	1.8%	1.0	4.7%
Leisure and Hospitality	85.9	0.7	0.6	1.6	7.8%	1.6	7.8%	-0.3	-1.5%
Other Services	28.9	-0.1	0.0	-0.1	-1.4%	-0.1	-1.4%	0.3	4.2%
Total Government	227.3	0.4	0.4	1.2	2.1%	1.2	2.1%	1.1	2.0%
Federal Government	12.6	0.0	0.0	-0.1	-3.1%	-0.1	-3.1%	0.1	3.2%
State and Local Education	90.9	0.1	0.2	0.5	2.2%	0.5	2.2%	0.2	0.9%
Other State and Local	123.8	0.3	0.3	0.9	3.0%	0.9	3.0%	0.8	2.7%
Household Statistics									
Labor Force	1027.9	1.5	-2.2	-3.5	-1.4%	-3.5	-1.4%	2.1	0.8%
Household Employment	984.1	2.8	-2.4	-2.2	-0.9%	-2.2	-0.9%	4.6	1.9%
Unemployment Rate	4.3%	-0.13%	0.03%	-0.11%		-0.11%		-0.26%	

The Sacramento MSA is made up of El Dorado, Placer, Yolo & Sacramento counties

Fresno MSA: Employment Charts and Summary



Fresno MSA: Employment Tables (thousands)

	Current	Monthly Change		Quarterly Change		Year-to-date 2006		Year-to-date 2005	
	Level	Feb-06	Jan-06	Abs.	%AR	Abs.	%AR	Abs.	%AR
Payroll Statistics	Mar-06	Mar-06	Feb-06	Abs.	%AR	Abs.	%AR	Abs.	%AR
Total Non-Farm	298.6	1.1	1.1	3.5	4.8%	3.5	4.8%	3.1	4.4%
Total Private	229.8	0.2	0.6	1.9	3.4%	1.9	3.4%	2.6	4.8%
Construction	22.8	0.0	0.1	0.1	1.8%	0.1	1.8%	0.3	6.0%
Durable Manufacturing	10.6	0.0	0.1	0.2	7.9%	0.2	7.9%	0.0	0.0%
Non-Durable Manufacturing	16.6	0.0	0.1	0.3	7.6%	0.3	7.6%	0.0	0.0%
Wholesale Trade	13.0	0.0	0.0	0.2	6.4%	0.2	6.4%	0.1	3.3%
Retail Trade	34.7	0.2	0.2	0.6	7.2%	0.6	7.2%	0.6	7.2%
Transportation and Utilities	9.7	0.0	0.1	0.2	8.7%	0.2	8.7%	-0.1	-4.1%
Information	4.7	0.1	0.1	0.3	30.2%	0.3	30.2%	0.1	9.4%
Financial Activities	14.7	0.1	0.0	0.1	2.8%	0.1	2.8%	0.0	0.0%
Professional Services	10.5	0.0	-0.1	-0.1	-3.7%	-0.1	-3.7%	0.4	16.8%
Management Companies	2.9	0.0	0.0	0.0	0.0%	0.0	0.0%	-0.2	-21.5%
Administrative Support	15.5	0.1	0.1	0.4	11.0%	0.4	11.0%	0.5	14.4%
Education and Healthcare	37.0	-0.1	0.0	0.2	2.2%	0.2	2.2%	0.0	0.0%
Leisure and Hospitality	26.0	0.0	0.0	0.0	0.0%	0.0	0.0%	0.6	10.0%
Other Services	10.8	0.0	0.0	-0.1	-3.6%	-0.1	-3.6%	0.1	3.9%
Total Government	68.8	1.0	0.5	1.7	10.5%	1.7	10.5%	0.5	3.0%
Federal Government	10.5	0.7	0.4	1.2	62.5%	1.2	62.5%	0.3	12.4%
State and Local Education	33.3	0.3	0.0	0.4	5.0%	0.4	5.0%	-0.1	-1.2%
Other State and Local	25.0	0.1	0.1	0.2	3.3%	0.2	3.3%	0.3	5.2%
Household Statistics									
Labor Force	406.0	3.0	-1.3	-2.4	-2.3%	-2.4	-2.3%	3.2	3.2%
Household Employment	375.5	2.3	-1.0	-1.4	-1.5%	-1.4	-1.5%	5.6	6.2%
Unemployment Rate	7.5%	0.12%	-0.05%	-0.20%		-0.20%		-0.66%	

The Fresno MSA is made up of Fresno County only now.