

UCLA ANDERSON FORECAST DATA RELEASE
SEASONALLY ADJUSTED REGIONAL JOB DATA FOR CALIFORNIA
April 2006 Released May 19, 2006

Headline economic data announced for the U.S. economy are invariably published in seasonally adjusted form, and most of the statewide data are so adjusted as well. California is a very large economy, with many highly diverse regional economies. Unfortunately the regional data are not seasonally adjusted by state agencies. As a result, the local data are not amenable to analysis of recent short-run trends in the local economies, since in the absence of seasonal adjustment, analysts typically look at job levels and growth rates compared to those of a year earlier, in order to abstract from seasonal influences. This practice provides a relevant perspective on how regional economic growth has developed over the past year, but it says little or nothing about how regional growth has progressed in recent months.

To address these deficiencies in the local data, the UCLA Anderson Forecast will publish seasonally adjusted versions of employment data for the ten major metropolitan economies within California. On the 2nd Friday of each month, when the unadjusted regional data are released by EDD, our economists will compile seasonally adjusted versions of the major components of payroll employment, aggregate employment within both the household and payroll surveys, and unemployment rates. Soon after the EDD data release we will publish a summary table of our seasonally adjusted employment data for each of the covered metropolitan regions, along with summary charts.

The ten economic regions covered at this time will be Los Angeles County, Orange County, San Diego County, the Riverside-San Bernardino (Inland Empire) economic region, Ventura County, Santa Clara County (San Jose MSA), the San Francisco-San Mateo-Marín metro region (San Francisco MSA), the Alameda-Contra Costa (Oakland MSA) region, the Sacramento-Placer-El Dorado area (Sacramento MSA) and Fresno-Madera region (Fresno MSA).

Any or all of these summary tables can be obtained through the Media Relations Office at the UCLA Anderson School of Management (call Hilary Rehder, 310-206-7707). For our economists' commentary on the data, please refer to the following contact list. If you are unable to reach one of economists please contact Hilary Rehder. For general information about the UCLA Anderson Forecast please call 310-825-1623.

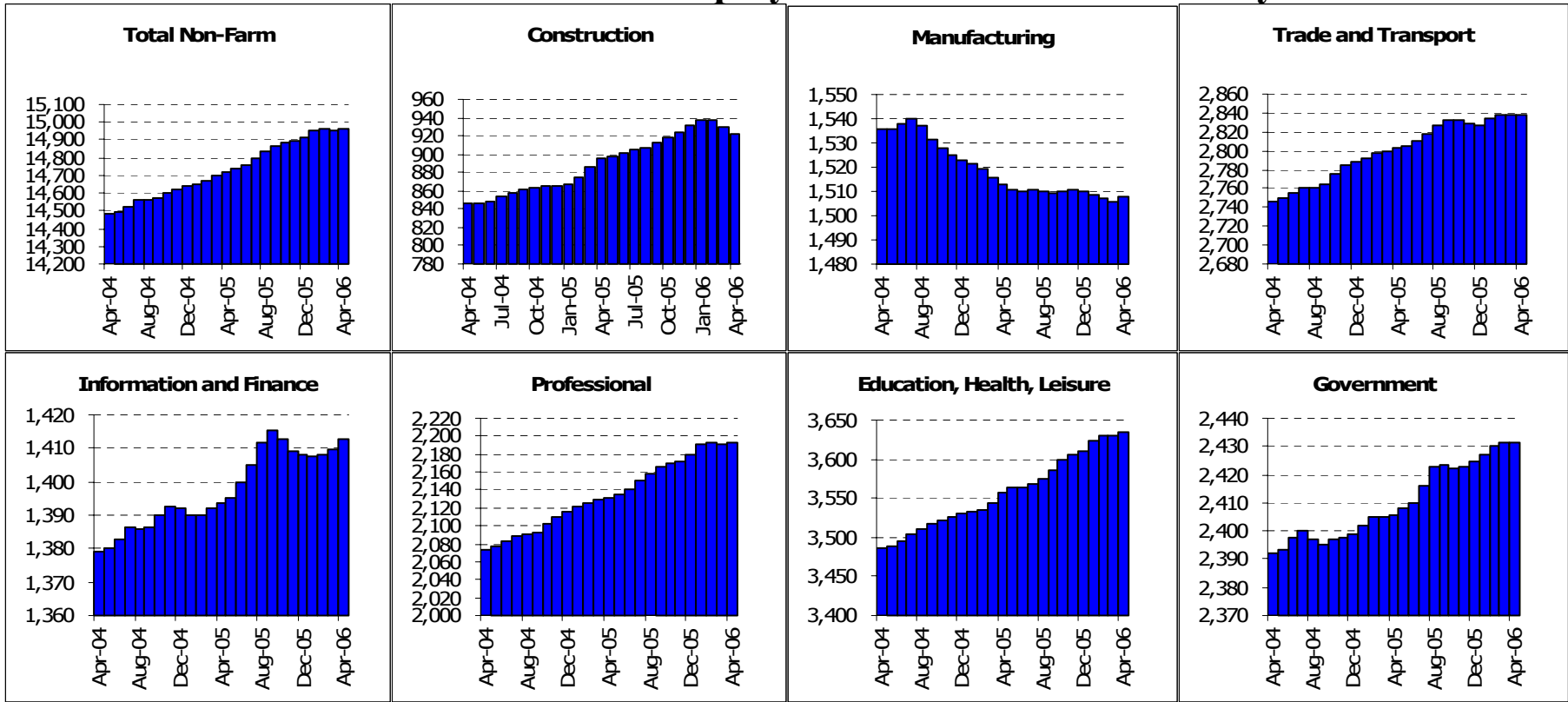
Economist	Contact	Economist	Contact
Christopher Thornberg	310-794-6382 UCLA	Ryan Ratcliff	310-206-4642 UCLA

California Overview

Payroll Employment

	Current	Monthly Change		Quarterly Change		Year-to-date 2006		Year-to-date 2005	
	Level	Mar-06	Feb-06	Quarterly Change		Year-to-date 2006		Year-to-date 2005	
	Apr-06	Apr-06	Mar-06	Abs.	%AR	Abs.	%AR	Abs.	%AR
California	14962.9	4.9	-8.2	11.1	0.3%	47.3	1.0%	85.0	1.8%
Los Angeles	4050.8	-0.4	2.3	7.3	0.7%	12.2	0.9%	2.6	0.2%
Orange County	1505.1	-1.1	1.5	4.6	1.2%	7.6	1.5%	16.6	3.4%
Riverside	1235.9	-0.9	1.3	1.9	0.6%	3.2	0.8%	21.9	5.6%
San Diego	1296.5	-1.9	-0.1	1.0	0.3%	5.3	1.2%	9.4	2.2%
Ventura	295.9	-0.1	-0.1	0.5	0.7%	1.8	1.8%	2.9	3.1%
Santa Barbara	172.5	-0.1	0.1	0.0	0.0%	0.0	0.0%	2.5	4.5%
Bakersfield	225.6	-0.5	0.2	0.6	1.1%	1.3	1.7%	3.2	4.5%
East Bay	1054.2	0.9	0.5	3.6	1.4%	7.6	2.2%	2.8	0.8%
San Francisco	953.7	0.8	1.1	3.9	1.7%	5.4	1.7%	2.8	0.9%
San Jose	875.2	1.3	1.4	4.7	2.2%	6.0	2.1%	2.0	0.7%
Sacramento	898.2	-1.8	0.4	1.1	0.5%	4.0	1.3%	8.6	3.0%
Santa Rosa	187.0	-1.8	-0.8	-2.1	-4.4%	-1.3	-2.1%	0.9	1.5%
Fresno	296.3	-1.3	0.3	0.1	0.1%	1.2	1.2%	3.8	4.0%

State of California: Employment Charts and Summary

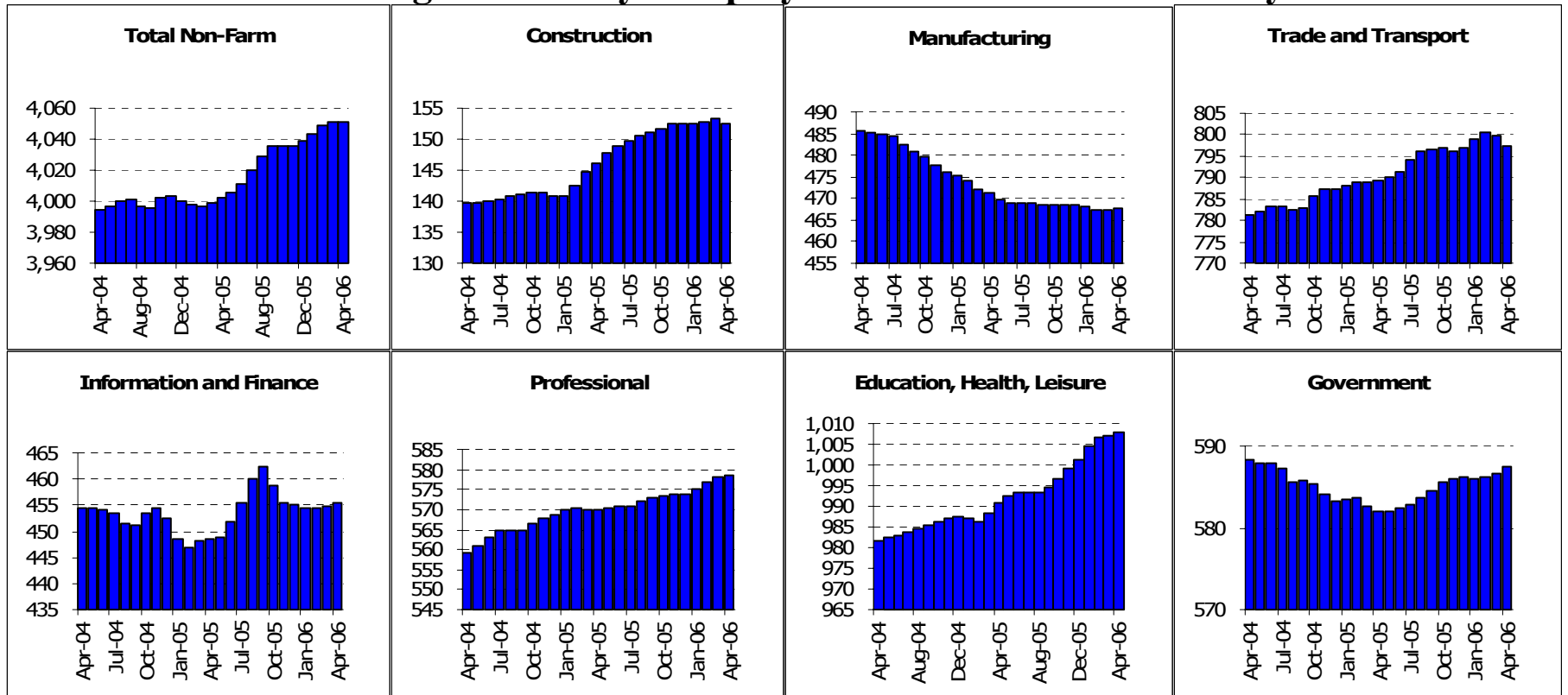


State of California: Employment Tables (thousands)

	Current	Monthly Change		Quarterly Change		Year-to-date 2006		Year-to-date 2005	
	Level	Mar-06	Feb-06	Abs.	%AR	Abs.	%AR	Abs.	%AR
Payroll Statistics	Apr-06	Apr-06	Mar-06	Abs.	%AR	Abs.	%AR	Abs.	%AR
Total Non-Farm	14962.9	4.9	-8.2	11.1	0.3%	47.3	1.0%	85.0	1.8%
Total Private	12531.4	4.8	-9.7	6.9	0.2%	40.7	1.0%	78.2	1.9%
Construction	921.4	-7.8	-7.9	-16.4	-6.8%	-10.1	-3.2%	28.9	10.4%
Durable Manufacturing	964.2	0.5	-1.1	-1.6	-0.7%	-1.2	-0.4%	-4.9	-1.5%
Non-Durable Manufacturing	543.6	1.6	0.0	0.7	0.5%	-0.9	-0.5%	-4.6	-2.5%
Wholesale Trade	682.1	0.6	0.6	2.2	1.3%	3.2	1.4%	6.1	2.8%
Retail Trade	1664.6	-0.7	-0.8	1.7	0.4%	5.3	1.0%	10.3	1.9%
Transportation and Utilities	491.9	0.8	-0.2	1.2	1.0%	3.2	2.0%	-1.4	-0.9%
Information	470.7	3.0	1.3	2.9	2.5%	0.5	0.3%	-6.7	-4.1%
Financial Activities	941.9	0.0	0.4	1.9	0.8%	4.0	1.3%	8.1	2.7%
Professional Services	976.7	0.7	0.4	4.1	1.7%	8.4	2.6%	16.3	5.3%
Management Companies	224.2	0.6	-0.3	1.1	2.0%	3.4	4.7%	-2.3	-3.0%
Administrative Support	992.2	1.4	-3.3	-2.6	-1.0%	2.1	0.6%	2.7	0.8%
Education and Healthcare	1605.7	1.6	0.2	4.8	1.2%	8.9	1.7%	9.3	1.8%
Leisure and Hospitality	1509.7	1.9	0.5	5.4	1.4%	11.7	2.4%	12.8	2.7%
Other Services	519.5	0.8	0.5	2.1	1.6%	3.2	1.9%	3.8	2.3%
Total Government	2431.5	0.1	1.5	4.2	0.7%	6.6	0.8%	6.8	0.9%
Federal Government	247.4	-0.1	0.3	0.5	0.8%	-0.1	-0.1%	-0.8	-1.0%
State and Local Education	1157.3	-0.2	-0.2	0.4	0.1%	1.8	0.5%	0.2	0.1%
Other State and Local	1026.8	0.6	1.3	3.4	1.3%	5.0	1.5%	7.4	2.2%
Household Statistics									
Labor Force	17706.6	21.4	10.4	-10.9	-0.2%	-72.5	-1.2%	62.9	1.1%
Household Employment	16840.2	7.6	24.6	0.4	0.0%	-47.7	-0.8%	127.4	2.3%
Unemployment Rate	4.9%	0.07%	-0.08%	-0.06%		-0.12%		-0.39%	

The California EDD also releases seasonally adjusted data for California. As the EDD uses a different algorithm for this process, their numbers may differ from ours on a month to month basis.

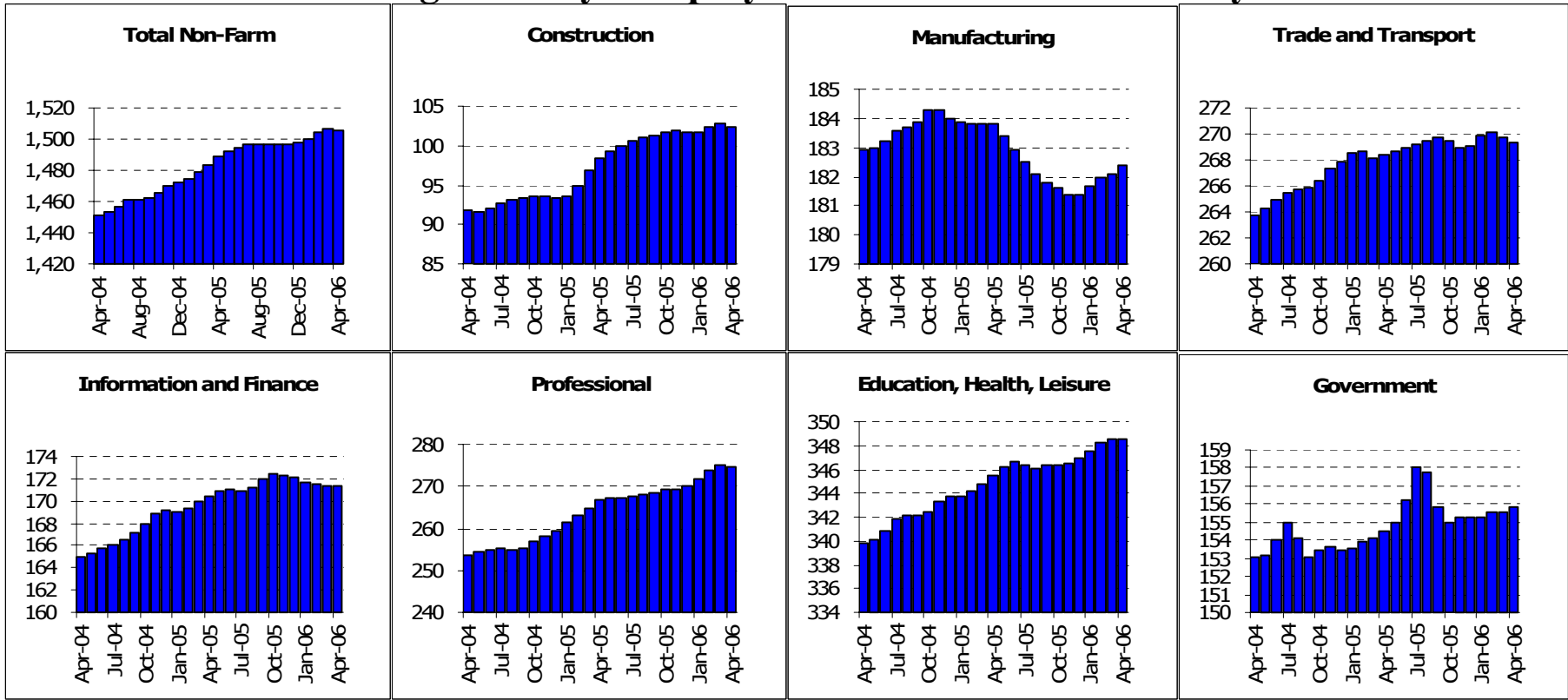
Los Angeles County: Employment Charts and Summary



Los Angeles County: Employment Tables (thousands)

	Current	Monthly Change		Quarterly Change		Year-to-date 2006		Year-to-date 2005	
	Level	Mar-06	Feb-06	Abs.	%AR	Abs.	%AR	Abs.	%AR
Payroll Statistics	Apr-06	Apr-06	Mar-06	Abs.	%AR	Abs.	%AR	Abs.	%AR
Total Non-Farm	4050.8	-0.4	2.3	7.3	0.7%	12.2	0.9%	2.6	0.2%
Total Private	3463.3	-1.2	1.8	5.9	0.7%	11.0	1.0%	3.9	0.3%
Construction	152.6	-0.6	0.3	0.1	0.3%	0.0	0.0%	5.4	12.0%
Durable Manufacturing	261.2	0.0	-0.4	-0.6	-0.9%	-0.1	-0.1%	-1.8	-2.0%
Non-Durable Manufacturing	206.3	0.2	-0.3	-0.6	-1.2%	-1.1	-1.6%	-3.3	-4.6%
Wholesale Trade	220.2	0.3	0.2	0.9	1.7%	1.3	1.8%	1.7	2.4%
Retail Trade	414.8	-1.1	-0.3	-0.2	-0.2%	1.0	0.7%	1.8	1.3%
Transportation and Utilities	163.7	-0.3	0.2	0.7	1.7%	1.5	2.8%	-1.3	-2.4%
Information	208.4	0.7	0.5	0.6	1.2%	-0.6	-0.9%	-4.8	-6.7%
Financial Activities	246.9	-0.2	0.0	0.3	0.5%	0.9	1.1%	1.0	1.2%
Professional Services	253.1	-0.1	0.4	1.5	2.4%	2.6	3.1%	3.0	3.7%
Management Companies	71.0	0.2	0.2	0.7	4.0%	1.1	4.8%	0.1	0.4%
Administrative Support	253.6	0.6	-0.7	-0.5	-0.8%	-0.1	-0.1%	-1.9	-2.2%
Education and Healthcare	473.8	0.0	-0.6	-0.2	-0.2%	1.1	0.7%	0.3	0.2%
Leisure and Hospitality	385.4	0.4	1.2	3.1	3.3%	4.5	3.6%	2.3	1.9%
Other Services	148.6	0.2	0.1	0.5	1.4%	0.9	1.8%	0.7	1.5%
Total Government	587.5	0.9	0.4	1.5	1.0%	1.3	0.7%	-1.2	-0.6%
Federal Government	53.2	0.1	0.0	0.2	1.5%	0.1	0.6%	-0.2	-1.1%
State and Local Education	296.2	0.5	0.4	0.9	1.2%	0.6	0.6%	-2.6	-2.6%
Other State and Local	238.1	0.4	0.1	0.6	1.0%	0.8	1.0%	1.6	2.1%
Household Statistics									
Labor Force	4871.5	-0.6	8.8	14.1	1.2%	13.0	0.8%	16.0	1.0%
Household Employment	4638.8	7.5	23.7	37.9	3.3%	34.5	2.3%	38.6	2.6%
Unemployment Rate	4.8%	-0.17%	-0.32%	-0.50%		-0.46%		-0.49%	

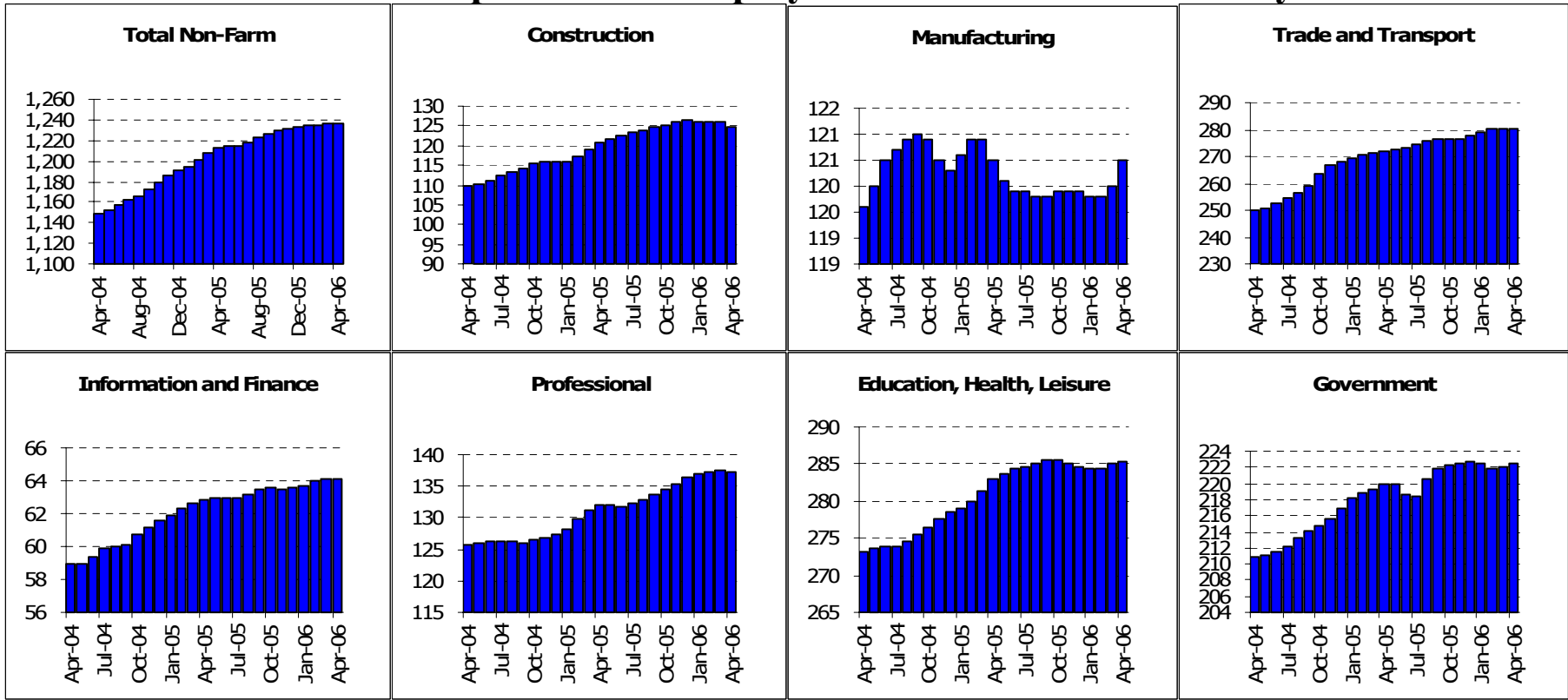
Orange County: Employment Charts and Summary



Orange County: Employment Tables (thousands)

	Current	Monthly Change		Quarterly Change		Year-to-date 2006		Year-to-date 2005	
	Level	Mar-06	Feb-06	Abs.	%AR	Abs.	%AR	Abs.	%AR
Payroll Statistics	Apr-06	Apr-06	Mar-06	Abs.	%AR	Abs.	%AR	Abs.	%AR
Total Non-Farm	1505.1	-1.1	1.5	4.6	1.2%	7.6	1.5%	16.6	3.4%
Total Private	1349.3	-1.2	1.5	4.2	1.3%	7.1	1.6%	15.5	3.6%
Construction	102.3	-0.4	0.3	0.5	2.0%	0.5	1.5%	5.1	17.3%
Durable Manufacturing	128.3	0.2	-0.1	0.3	0.9%	0.8	1.9%	0.5	1.2%
Non-Durable Manufacturing	54.0	0.0	0.0	0.0	0.0%	0.1	0.6%	-1.1	-5.8%
Wholesale Trade	82.5	-0.1	-0.1	-0.3	-1.4%	-0.3	-1.1%	0.2	0.7%
Retail Trade	158.0	0.1	0.0	0.7	1.8%	1.4	2.7%	0.5	1.0%
Transportation and Utilities	29.2	0.1	0.0	0.1	1.4%	0.3	3.1%	-0.3	-3.0%
Information	32.0	0.0	-0.2	-0.3	-3.7%	-0.4	-3.7%	-0.5	-4.4%
Financial Activities	139.3	0.0	0.0	-0.1	-0.3%	-0.4	-0.9%	1.8	4.0%
Professional Services	104.5	0.0	0.2	0.8	3.1%	1.2	3.5%	2.1	6.4%
Management Companies	29.9	0.0	0.0	-0.1	-1.3%	-0.2	-2.0%	-0.3	-2.9%
Administrative Support	139.9	-0.2	0.3	1.5	4.4%	3.4	7.7%	5.3	12.9%
Education and Healthcare	134.8	-0.1	0.0	0.1	0.3%	0.3	0.7%	1.0	2.3%
Leisure and Hospitality	165.4	0.1	0.5	1.1	2.7%	1.4	2.6%	0.2	0.4%
Other Services	48.3	-0.1	-0.1	-0.2	-1.6%	-0.1	-0.6%	0.6	3.8%
Total Government	155.8	0.2	0.0	0.5	1.3%	0.5	1.0%	1.1	2.2%
Federal Government	11.4	0.1	0.0	0.0	0.0%	0.0	0.0%	0.0	0.0%
State and Local Education	91.7	0.2	0.1	0.6	2.7%	0.5	1.7%	0.6	2.0%
Other State and Local	52.7	0.0	0.0	0.0	0.0%	0.0	0.0%	0.5	2.9%
Household Statistics									
Labor Force	1592.9	-0.3	-1.5	-6.1	-1.5%	-11.7	-2.2%	5.9	1.1%
Household Employment	1540.9	0.5	0.3	-2.4	-0.6%	-6.7	-1.3%	10.4	2.1%
Unemployment Rate	3.3%	-0.05%	-0.11%	-0.22%		-0.29%		-0.30%	

Inland Empire MSA: Employment Charts and Summary

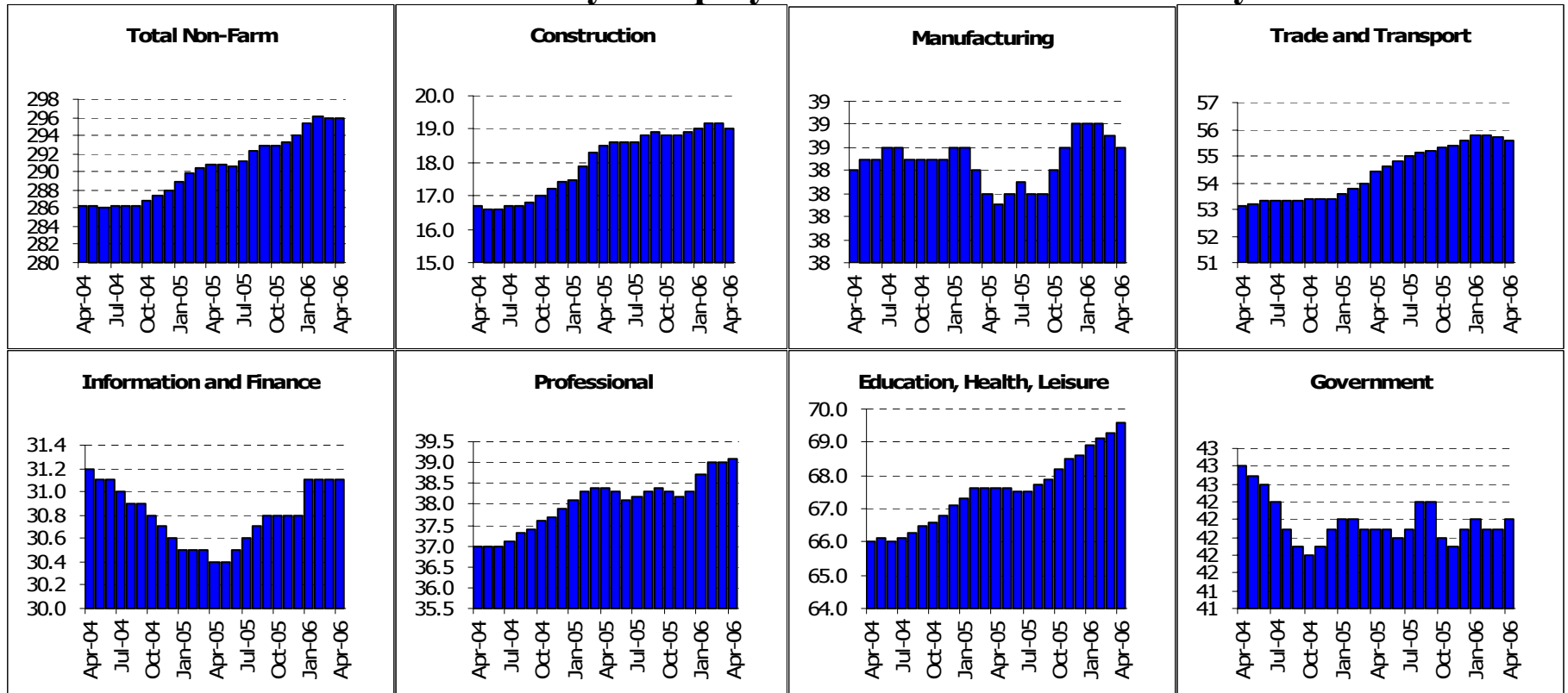


Inland Empire MSA: Employment Tables (thousands)

	Current	Monthly Change		Quarterly Change		Year-to-date 2006		Year-to-date 2005	
	Level	Mar-06	Feb-06	Abs.	%AR	Abs.	%AR	Abs.	%AR
Payroll Statistics	Apr-06	Apr-06	Mar-06	Abs.	%AR	Abs.	%AR	Abs.	%AR
Total Non-Farm	1235.9	-0.9	1.3	1.9	0.6%	3.2	0.8%	21.9	5.6%
Total Private	1013.5	-1.3	1.2	1.9	0.8%	3.5	1.0%	18.8	5.9%
Construction	124.9	-1.1	-0.1	-1.2	-3.8%	-1.4	-3.3%	4.6	12.4%
Durable Manufacturing	86.1	0.4	0.1	0.6	2.8%	0.6	2.1%	-0.4	-1.4%
Non-Durable Manufacturing	34.4	0.1	-0.1	0.0	0.0%	0.0	0.0%	0.5	4.4%
Wholesale Trade	50.7	0.0	0.0	0.1	0.8%	0.5	3.0%	0.6	3.8%
Retail Trade	168.5	0.2	0.6	1.6	3.9%	2.3	4.2%	2.2	4.1%
Transportation and Utilities	61.4	0.0	0.1	0.5	3.3%	0.9	4.5%	1.0	5.2%
Information	14.4	0.0	0.0	0.1	2.8%	0.1	2.1%	0.3	6.4%
Financial Activities	49.7	0.0	0.1	0.3	2.5%	0.4	2.5%	0.9	5.8%
Professional Services	35.2	0.1	0.1	0.2	2.3%	0.0	0.0%	1.4	13.6%
Management Companies	12.8	0.0	0.0	0.1	3.2%	0.2	4.8%	0.2	5.1%
Administrative Support	89.0	-0.2	-0.3	-0.5	-2.2%	0.4	1.4%	3.0	11.2%
Education and Healthcare	120.4	-0.1	0.1	0.1	0.3%	0.0	0.0%	1.1	2.8%
Leisure and Hospitality	123.4	0.3	0.4	0.9	3.0%	0.8	2.0%	2.1	5.3%
Other Services	41.6	0.1	0.1	0.1	1.0%	0.0	0.0%	1.1	8.5%
Total Government	222.4	0.4	0.2	0.0	0.0%	-0.3	-0.4%	3.0	4.2%
Federal Government	18.6	0.0	0.0	0.0	0.0%	-0.1	-1.6%	0.4	6.9%
State and Local Education	108.4	0.1	-0.3	-1.2	-4.3%	-1.7	-4.6%	-0.1	-0.3%
Other State and Local	95.4	0.4	0.5	1.3	5.6%	1.7	5.5%	2.6	8.9%
Household Statistics									
Labor Force	1710.6	2.4	-0.7	-5.3	-1.2%	-13.1	-2.3%	17.8	3.2%
Household Employment	1632.0	1.3	-0.2	-4.9	-1.2%	-10.7	-1.9%	21.6	4.1%
Unemployment Rate	4.6%	0.06%	-0.03%	-0.01%		-0.10%		-0.28%	

The Inland Empire is made up of Riverside and San Bernardino counties

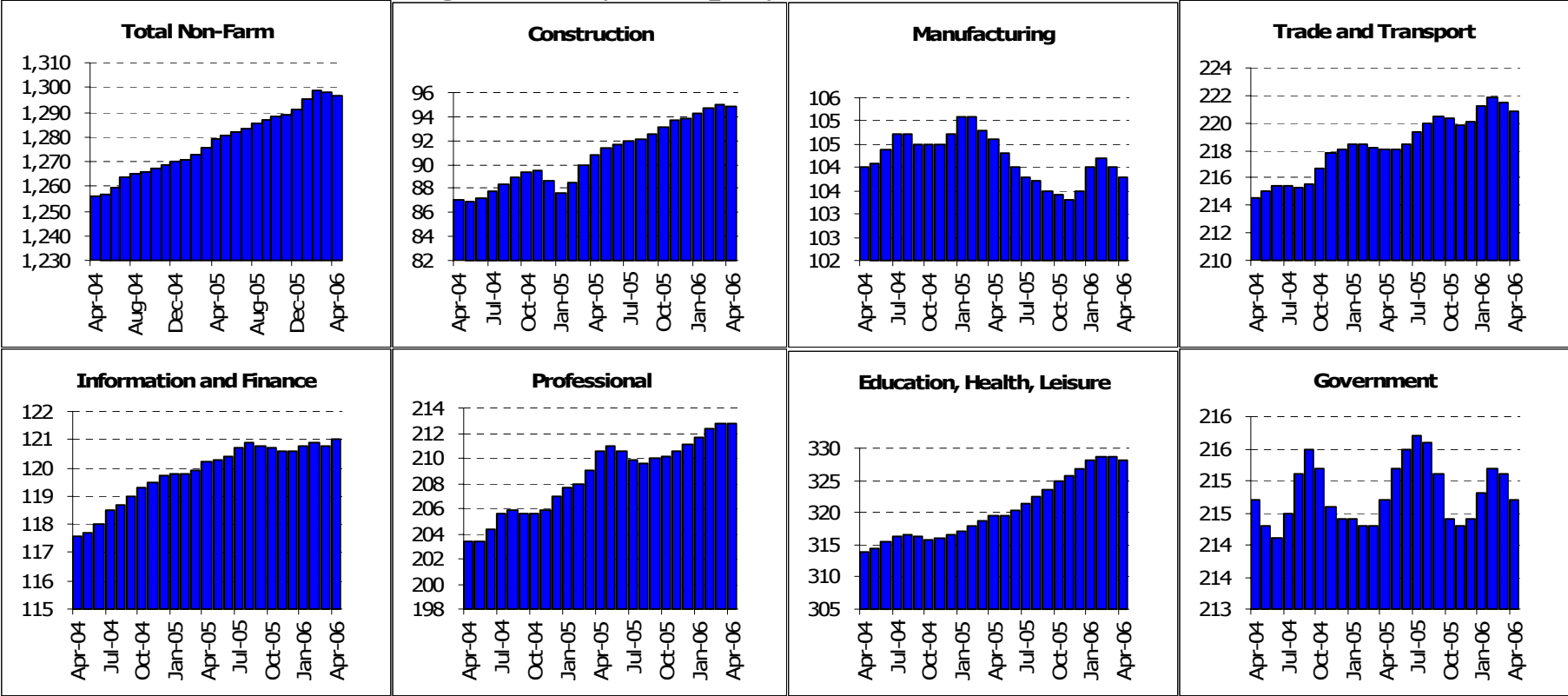
Ventura County: Employment Charts and Summary



Ventura County: Employment Tables (thousands)

	Current	Monthly Change		Quarterly Change		Year-to-date 2006		Year-to-date 2005	
	Level	Mar-06	Feb-06	Abs.	%AR	Abs.	%AR	Abs.	%AR
Payroll Statistics	Apr-06	Apr-06	Mar-06	Abs.	%AR	Abs.	%AR	Abs.	%AR
Total Non-Farm	295.9	-0.1	-0.1	0.5	0.7%	1.8	1.8%	2.9	3.1%
Total Private	253.7	-0.2	0.0	0.5	0.8%	1.7	2.0%	2.9	3.6%
Construction	19.0	-0.2	0.0	0.0	0.0%	0.1	1.6%	1.1	20.2%
Durable Manufacturing	24.3	0.0	-0.1	-0.2	-3.2%	-0.2	-2.4%	-0.1	-1.2%
Non-Durable Manufacturing	14.3	0.0	-0.1	0.0	0.0%	0.1	2.1%	-0.2	-4.2%
Wholesale Trade	12.7	0.0	0.0	0.0	0.0%	0.0	0.0%	-0.1	-2.4%
Retail Trade	37.1	0.1	0.0	0.2	2.2%	0.2	1.6%	0.9	7.8%
Transportation and Utilities	5.9	0.0	0.0	0.0	0.0%	0.0	0.0%	0.1	5.4%
Information	6.1	0.0	0.0	-0.1	-6.3%	0.0	0.0%	-0.1	-4.8%
Financial Activities	25.0	0.0	0.0	0.1	1.6%	0.3	3.7%	-0.1	-1.2%
Professional Services	15.4	0.0	-0.1	0.1	2.6%	0.4	8.2%	0.3	6.3%
Management Companies	3.6	0.0	0.0	0.0	0.0%	0.0	0.0%	-0.1	-8.1%
Administrative Support	20.0	0.1	0.0	0.2	4.1%	0.4	6.2%	0.3	4.6%
Education and Healthcare	29.3	0.0	0.0	0.1	1.4%	0.2	2.1%	0.5	5.5%
Leisure and Hospitality	29.9	0.3	0.2	0.6	8.4%	0.8	8.5%	-0.1	-1.0%
Other Services	10.4	0.0	0.0	0.0	0.0%	0.0	0.0%	0.1	2.9%
Total Government	42.2	0.1	0.0	0.0	0.0%	0.1	0.7%	0.0	0.0%
Federal Government	7.2	0.0	0.0	0.0	0.0%	-0.1	-4.1%	-0.1	-3.9%
State and Local Education	18.4	0.1	-0.1	-0.1	-2.1%	0.1	1.6%	-0.3	-4.7%
Other State and Local	16.6	0.1	0.1	0.2	5.0%	0.2	3.7%	-0.1	-1.8%
Household Statistics									
Labor Force	420.2	0.8	-0.1	-0.6	-0.6%	-2.1	-1.5%	2.8	2.0%
Household Employment	401.6	0.4	-0.1	-1.1	-1.1%	-2.5	-1.8%	3.5	2.7%
Unemployment Rate	4.4%	0.09%	0.00%	0.13%		0.12%		-0.20%	

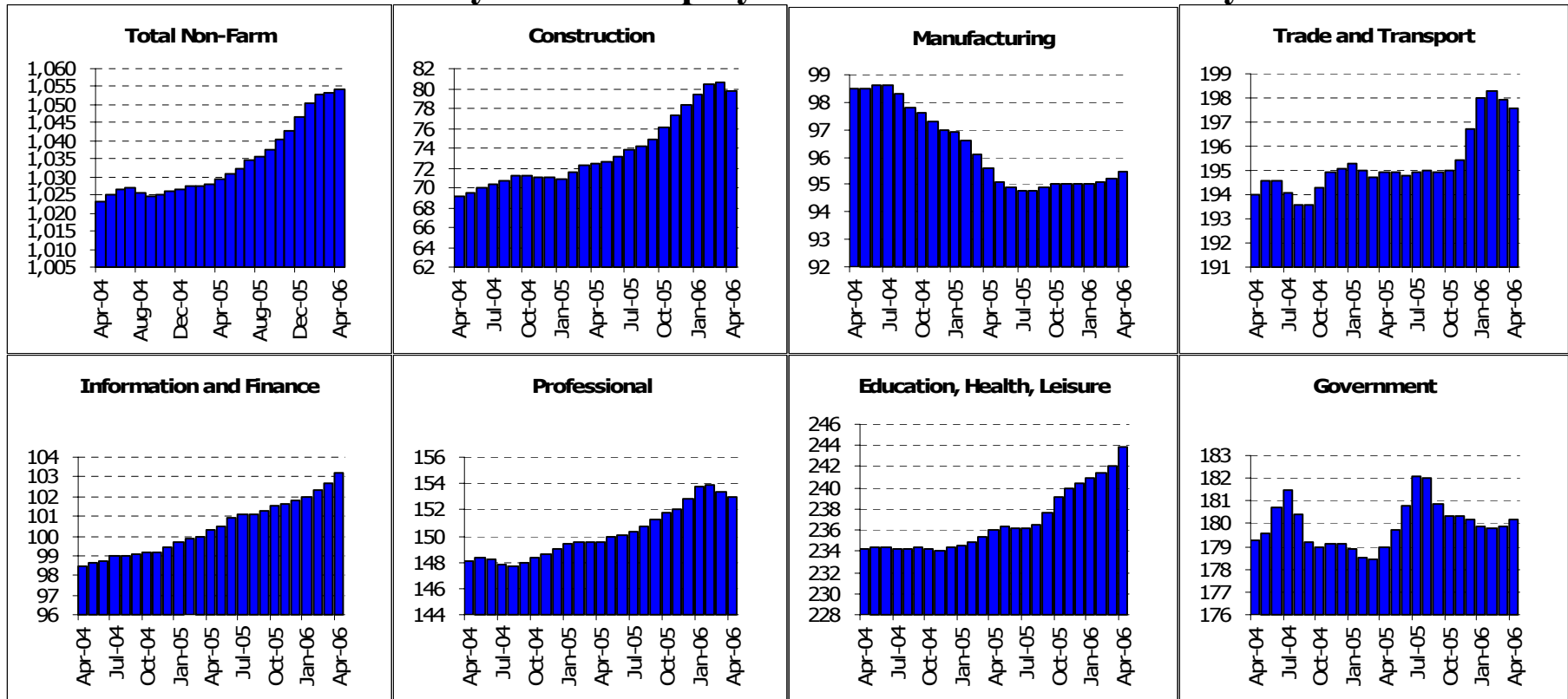
San Diego County: Employment Charts and Summary



San Diego County: Employment Tables (thousands)

	Current	Monthly Change		Quarterly Change		Year-to-date 2006		Year-to-date 2005	
	Level	Mar-06	Feb-06	Abs.	%AR	Abs.	%AR	Abs.	%AR
Payroll Statistics	Apr-06	Apr-06	Mar-06	Abs.	%AR	Abs.	%AR	Abs.	%AR
Total Non-Farm	1296.5	-1.9	-0.1	1.0	0.3%	5.3	1.2%	9.4	2.2%
Total Private	1081.8	-1.4	-0.1	1.1	0.4%	5.1	1.4%	9.1	2.6%
Construction	94.9	-0.1	0.3	0.7	3.0%	1.0	3.2%	2.1	7.3%
Durable Manufacturing	78.5	0.0	-0.2	0.0	0.0%	0.5	1.9%	0.1	0.4%
Non-Durable Manufacturing	25.3	-0.1	-0.2	-0.3	-4.6%	-0.2	-2.3%	-0.3	-3.5%
Wholesale Trade	45.3	0.0	0.1	0.2	1.8%	0.5	3.4%	0.6	4.3%
Retail Trade	147.0	-0.3	-0.1	0.3	0.8%	1.0	2.1%	0.1	0.2%
Transportation and Utilities	28.9	0.1	0.0	0.1	1.4%	0.2	2.1%	-0.7	-7.1%
Information	37.0	0.1	0.1	0.2	2.2%	0.2	1.6%	0.4	3.3%
Financial Activities	84.0	0.1	-0.2	0.0	0.0%	0.2	0.7%	0.1	0.4%
Professional Services	106.1	0.2	0.1	0.3	1.1%	0.4	1.1%	4.1	12.7%
Management Companies	18.0	0.1	0.1	0.3	7.0%	0.3	5.2%	-0.2	-3.4%
Administrative Support	88.3	-0.1	-0.3	-0.2	-0.9%	0.5	1.7%	-0.4	-1.4%
Education and Healthcare	124.8	-0.2	-0.3	-0.3	-1.0%	0.5	1.2%	0.5	1.2%
Leisure and Hospitality	154.3	-0.3	0.2	0.3	0.8%	0.7	1.4%	2.1	4.4%
Other Services	49.0	0.0	0.1	0.1	0.8%	0.2	1.2%	0.3	1.9%
Total Government	214.7	-0.4	-0.1	-0.1	-0.2%	0.3	0.4%	0.3	0.4%
Federal Government	39.0	0.0	-0.1	0.0	0.0%	0.0	0.0%	-0.2	-1.5%
State and Local Education	98.4	0.0	0.1	0.3	1.2%	0.3	0.9%	0.0	0.0%
Other State and Local	77.3	-0.3	-0.1	-0.3	-1.5%	0.1	0.4%	0.4	1.6%
Household Statistics									
Labor Force	1499.4	-1.1	-1.8	-6.9	-1.8%	-10.8	-2.1%	4.3	0.9%
Household Employment	1443.2	-0.6	0.4	-3.0	-0.8%	-5.6	-1.2%	7.5	1.6%
Unemployment Rate	3.7%	-0.03%	-0.14%	-0.24%		-0.32%		-0.23%	

East Bay MSA: Employment Charts and Summary

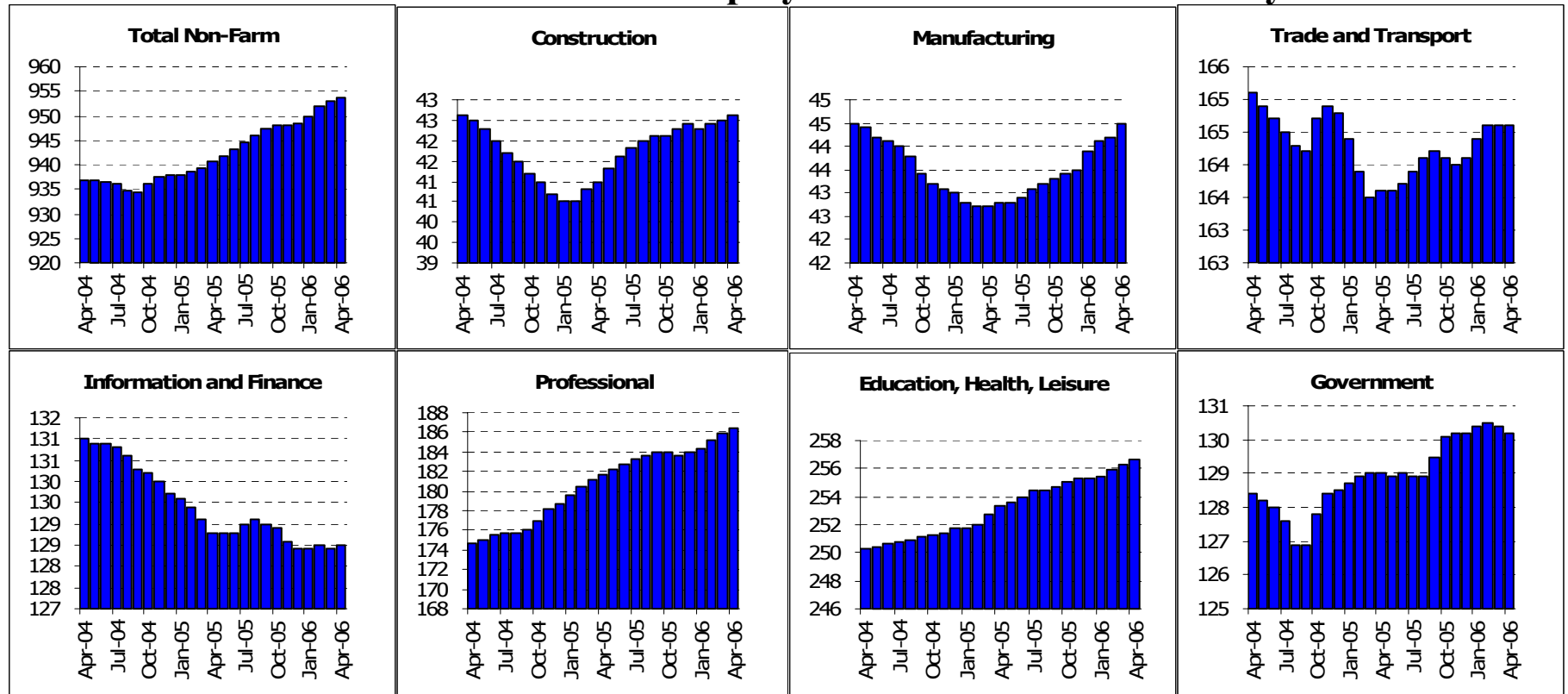


East Bay MSA: Employment Tables (thousands)

	Current	Monthly Change		Quarterly Change		Year-to-date 2006		Year-to-date 2005	
	Level	Mar-06	Feb-06	Abs.	%AR	Abs.	%AR	Abs.	%AR
Payroll Statistics	Apr-06	Apr-06	Mar-06	Abs.	%AR	Abs.	%AR	Abs.	%AR
Total Non-Farm	1054.2	0.9	0.5	3.6	1.4%	7.6	2.2%	2.8	0.8%
Total Private	874.0	0.6	0.5	3.4	1.6%	7.6	2.7%	2.8	1.0%
Construction	79.8	-0.8	0.1	0.4	2.0%	1.5	5.9%	1.4	6.0%
Durable Manufacturing	60.2	0.1	0.0	0.3	2.0%	0.5	2.5%	-0.7	-3.4%
Non-Durable Manufacturing	35.3	0.2	0.0	0.1	1.1%	0.1	0.9%	-0.9	-7.4%
Wholesale Trade	48.7	-0.1	0.0	0.1	0.8%	0.6	3.8%	-0.9	-5.4%
Retail Trade	114.8	0.1	0.0	0.3	1.1%	1.1	2.9%	0.7	1.9%
Transportation and Utilities	34.4	0.0	-0.1	-0.1	-1.2%	0.0	0.0%	-0.1	-0.9%
Information	30.0	0.2	0.1	0.3	4.1%	0.3	3.1%	0.0	0.0%
Financial Activities	73.2	0.3	0.3	0.9	5.1%	1.1	4.6%	0.9	4.0%
Professional Services	72.6	0.2	-0.2	-0.2	-1.1%	0.1	0.4%	0.9	3.9%
Management Companies	21.9	0.0	0.0	0.2	3.7%	0.7	10.2%	-0.4	-5.4%
Administrative Support	58.2	-0.4	-0.7	-1.3	-8.5%	-0.8	-4.0%	0.0	0.0%
Education and Healthcare	122.7	1.5	0.6	2.2	7.5%	2.4	6.1%	0.3	0.8%
Leisure and Hospitality	85.4	0.1	0.2	0.7	3.3%	1.2	4.3%	1.2	4.5%
Other Services	35.7	0.1	-0.1	-0.1	-1.1%	-0.2	-1.7%	0.1	0.8%
Total Government	180.2	0.3	0.1	0.3	0.7%	0.0	0.0%	-0.1	-0.2%
Federal Government	17.3	0.1	0.0	0.0	0.0%	-0.1	-1.7%	0.0	0.0%
State and Local Education	86.0	0.4	0.1	0.7	3.3%	0.7	2.5%	-0.2	-0.7%
Other State and Local	76.9	0.0	-0.1	-0.3	-1.5%	-0.4	-1.5%	0.2	0.8%
Household Statistics									
Labor Force	1259.4	3.4	-0.1	-1.9	-0.6%	-6.4	-1.5%	-4.5	-1.1%
Household Employment	1206.5	3.9	1.7	1.8	0.6%	-0.9	-0.2%	0.8	0.2%
Unemployment Rate	4.2%	-0.05%	-0.14%	-0.29%		-0.41%		-0.40%	

East Bay is also known as the Oakland MSA. It is made up of Alameda and Contra Costa counties.

San Francisco MSA: Employment Charts and Summary

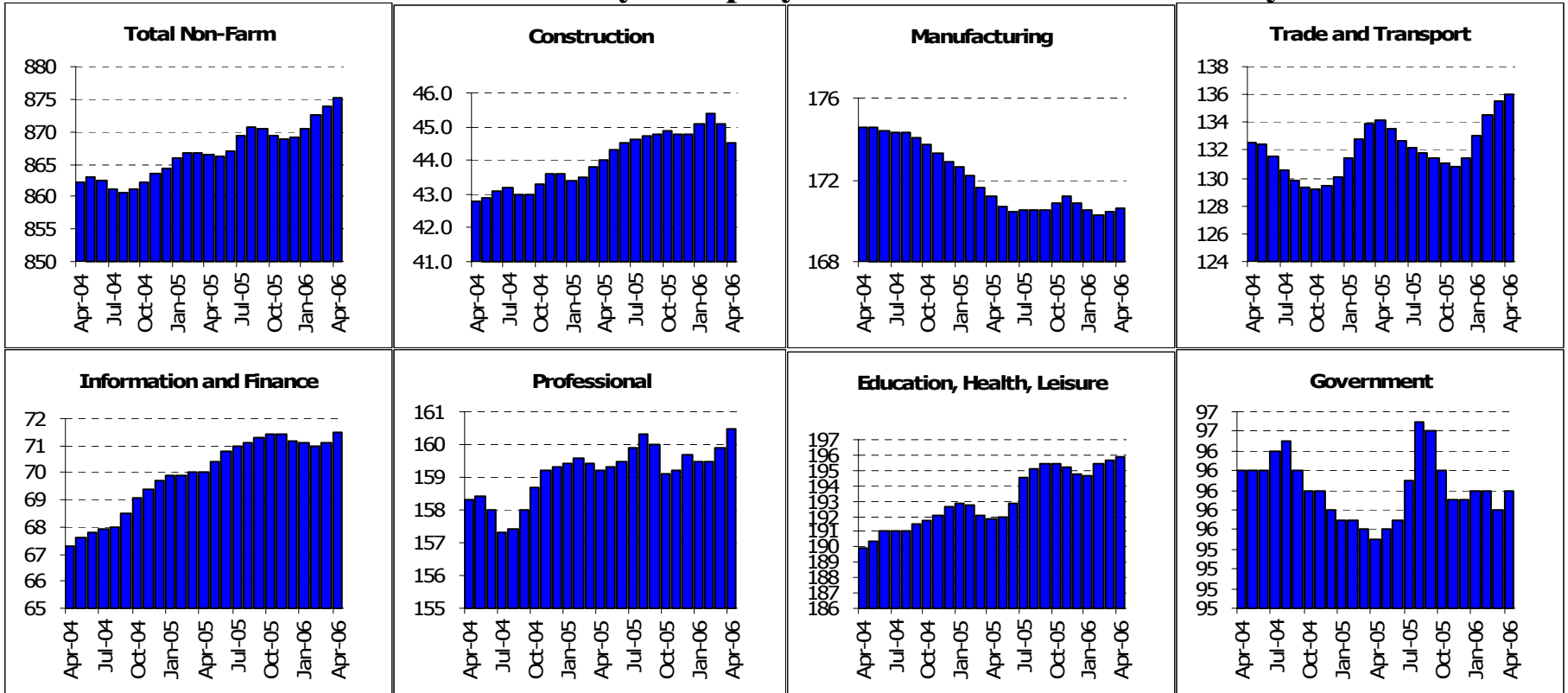


San Francisco MSA: Employment Tables (thousands)

	Current	Monthly Change		Quarterly Change		Year-to-date 2006		Year-to-date 2005	
	Level	Mar-06	Feb-06	Abs.	%AR	Abs.	%AR	Abs.	%AR
Payroll Statistics	Apr-06	Apr-06	Mar-06	Abs.	%AR	Abs.	%AR	Abs.	%AR
Total Non-Farm	953.7	0.8	1.1	3.9	1.7%	5.4	1.7%	2.8	0.9%
Total Private	823.5	1.0	1.3	4.1	2.0%	5.5	2.0%	2.4	0.9%
Construction	42.6	0.1	0.1	0.3	2.9%	0.2	1.4%	0.3	2.2%
Durable Manufacturing	21.5	0.2	0.0	0.3	5.8%	0.4	5.8%	-0.1	-1.4%
Non-Durable Manufacturing	23.0	0.1	0.0	0.3	5.4%	0.6	8.3%	-0.4	-5.4%
Wholesale Trade	26.8	0.1	0.0	0.2	3.0%	0.3	3.4%	-0.1	-1.1%
Retail Trade	95.2	0.2	0.2	0.7	3.0%	0.9	2.9%	-0.1	-0.3%
Transportation and Utilities	42.9	0.1	-0.1	0.0	0.0%	0.0	0.0%	-1.0	-6.6%
Information	39.9	0.0	-0.1	-0.2	-2.0%	-0.3	-2.2%	-1.2	-8.2%
Financial Activities	88.6	0.1	0.0	0.3	1.4%	0.4	1.4%	0.3	1.0%
Professional Services	109.0	0.3	0.2	0.8	3.0%	1.3	3.7%	2.1	6.2%
Management Companies	20.0	0.0	0.0	0.0	0.0%	0.0	0.0%	0.0	0.0%
Administrative Support	57.1	0.3	0.1	0.6	4.3%	0.9	4.9%	0.8	4.5%
Education and Healthcare	101.1	-0.1	-0.1	-0.3	-1.2%	-0.4	-1.2%	0.7	2.1%
Leisure and Hospitality	117.9	0.3	0.4	1.3	4.5%	1.5	3.9%	0.7	1.8%
Other Services	37.7	0.2	0.1	0.3	3.2%	0.3	2.4%	0.2	1.6%
Total Government	130.2	-0.2	-0.1	-0.2	-0.6%	0.0	0.0%	0.5	1.2%
Federal Government	20.1	-0.1	-0.1	-0.2	-3.9%	-0.3	-4.3%	-0.4	-5.7%
State and Local Education	49.3	0.0	-0.2	0.0	0.0%	0.1	0.6%	0.3	1.9%
Other State and Local	60.8	0.1	0.0	0.2	1.3%	0.2	1.0%	0.5	2.5%
Household Statistics									
Labor Force	908.1	1.4	0.1	-1.7	-0.7%	-5.8	-1.9%	-3.3	-1.1%
Household Employment	872.7	2.1	1.5	1.3	0.6%	-2.0	-0.7%	0.6	0.2%
Unemployment Rate	3.9%	-0.08%	-0.15%	-0.32%		-0.39%		-0.41%	

The San Francisco MSA includes Marin, San Francisco and San Mateo counties

Santa Clara County: Employment Charts and Summary

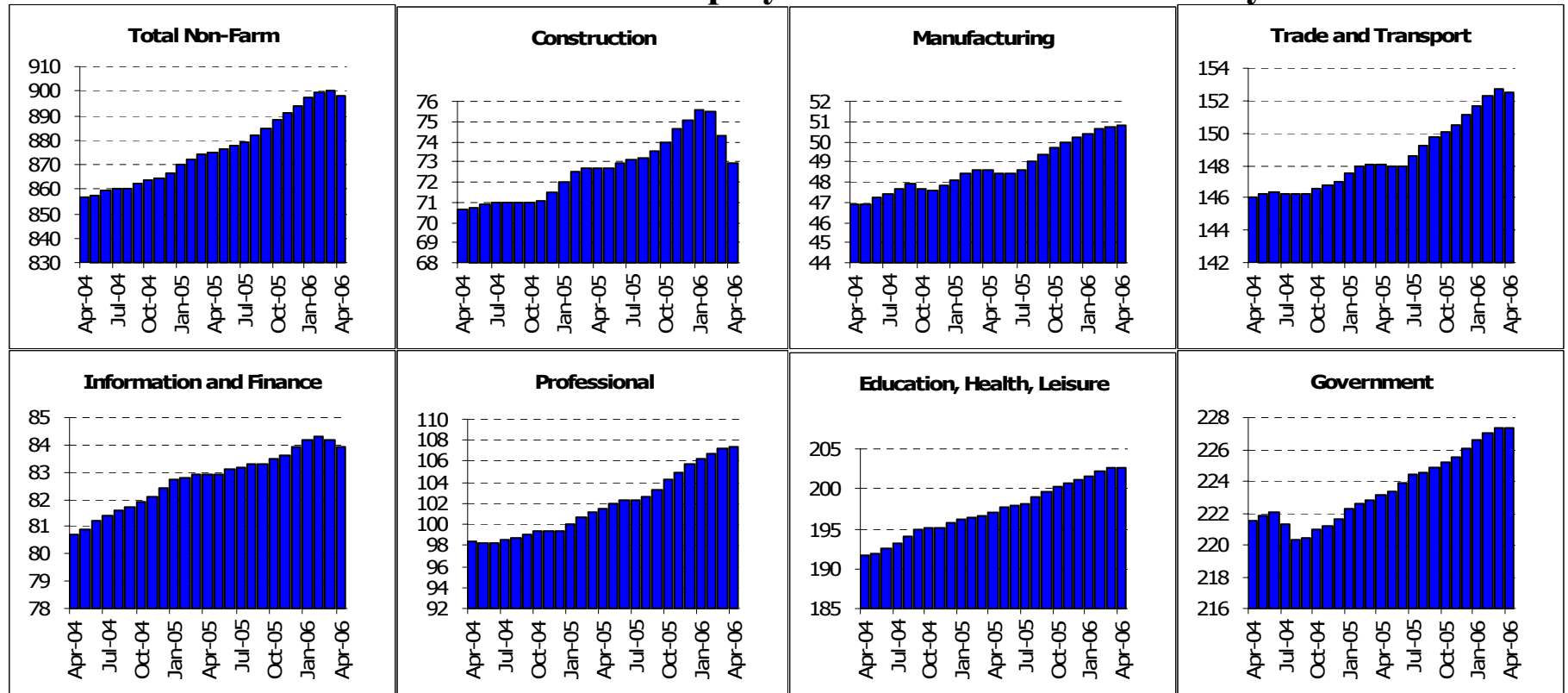


Santa Clara County: Employment Tables (thousands)

	Current	Monthly Change		Quarterly Change		Year-to-date 2006		Year-to-date 2005	
	Level	Mar-06	Feb-06	Abs.	%AR	Abs.	%AR	Abs.	%AR
Payroll Statistics	Apr-06	Apr-06	Mar-06	Abs.	%AR	Abs.	%AR	Abs.	%AR
Total Non-Farm	875.2	1.3	1.4	4.7	2.2%	6.0	2.1%	2.0	0.7%
Total Private	779.2	1.1	1.6	4.8	2.5%	6.0	2.3%	2.4	0.9%
Construction	44.5	-0.6	-0.3	-0.6	-5.2%	-0.3	-2.0%	0.4	2.8%
Durable Manufacturing	157.9	0.1	-0.2	-0.3	-0.8%	-0.4	-0.8%	-2.0	-3.7%
Non-Durable Manufacturing	12.6	0.1	0.1	0.2	6.6%	0.0	0.0%	0.1	2.6%
Wholesale Trade	39.6	0.4	1.1	3.1	38.6%	4.4	42.4%	3.7	36.6%
Retail Trade	83.6	0.3	0.1	0.5	2.4%	0.8	2.9%	0.4	1.5%
Transportation and Utilities	13.0	0.0	0.0	0.0	0.0%	-0.1	-2.3%	-0.2	-4.4%
Information	35.3	0.2	0.1	0.3	3.5%	0.3	2.6%	0.4	3.6%
Financial Activities	36.2	0.2	0.0	0.1	1.1%	0.0	0.0%	-0.1	-0.8%
Professional Services	101.1	0.5	0.4	1.2	4.9%	1.3	4.0%	0.6	1.8%
Management Companies	8.1	0.2	0.0	0.2	10.5%	0.1	3.8%	-0.3	-10.2%
Administrative Support	51.0	0.0	-0.4	-1.0	-7.5%	-0.9	-5.1%	-0.4	-2.3%
Education and Healthcare	97.5	0.3	0.2	0.8	3.4%	0.7	2.2%	-0.6	-1.9%
Leisure and Hospitality	73.9	0.3	0.3	1.0	5.6%	1.0	4.2%	0.0	0.0%
Other Services	24.5	-0.3	-0.3	-0.5	-7.8%	-0.5	-5.9%	-0.2	-2.4%
Total Government	96.0	0.2	-0.2	0.0	0.0%	0.1	0.3%	-0.3	-0.9%
Federal Government	11.0	0.0	0.0	-0.1	-3.6%	-0.1	-2.7%	-0.2	-5.1%
State and Local Education	46.2	0.1	0.0	0.0	0.0%	0.1	0.7%	0.0	0.0%
Other State and Local	38.8	0.1	0.0	0.2	2.1%	0.2	1.6%	-0.2	-1.5%
Household Statistics									
Labor Force	839.2	2.1	-0.1	-2.1	-1.0%	-7.1	-2.5%	-4.6	-1.6%
Household Employment	800.0	2.0	0.9	0.1	0.1%	-3.3	-1.2%	-0.8	-0.3%
Unemployment Rate	4.7%	0.00%	-0.12%	-0.25%		-0.41%		-0.42%	

The San Jose MSA is Santa Clara and San Benito counties.

Sacramento MSA: Employment Charts and Summary

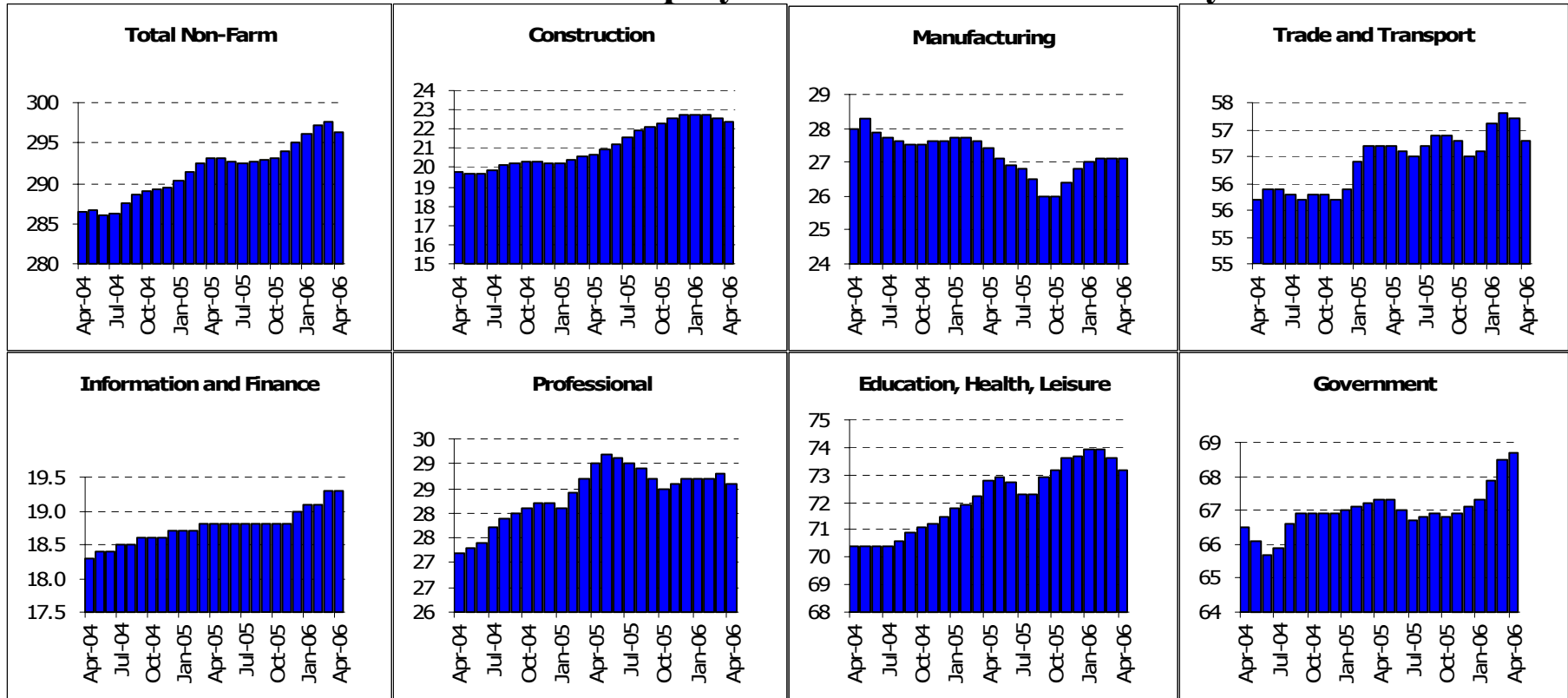


Sacramento MSA: Employment Tables (thousands)

	Current	Monthly Change		Quarterly Change		Year-to-date 2006		Year-to-date 2005	
	Level	Mar-06	Feb-06	Abs.	%AR	Abs.	%AR	Abs.	%AR
Payroll Statistics	Apr-06	Apr-06	Mar-06	Abs.	%AR	Abs.	%AR	Abs.	%AR
Total Non-Farm	898.2	-1.8	0.4	1.1	0.5%	4.0	1.3%	8.6	3.0%
Total Private	670.9	-1.8	0.2	0.4	0.2%	2.8	1.3%	7.0	3.3%
Construction	72.9	-1.4	-1.2	-2.7	-13.5%	-2.2	-8.5%	1.2	5.1%
Durable Manufacturing	36.9	0.0	0.1	0.3	3.3%	0.5	4.2%	0.7	6.2%
Non-Durable Manufacturing	13.9	0.1	0.0	0.1	2.9%	0.0	0.0%	0.0	0.0%
Wholesale Trade	27.4	0.1	0.0	0.2	3.0%	0.3	3.4%	0.1	1.1%
Retail Trade	101.4	-0.1	0.5	1.0	4.0%	1.5	4.6%	1.0	3.1%
Transportation and Utilities	24.0	0.1	0.1	0.3	5.2%	0.3	3.8%	0.1	1.3%
Information	19.4	-0.1	-0.1	-0.2	-4.0%	-0.2	-3.0%	-0.5	-7.1%
Financial Activities	64.5	-0.2	0.0	-0.1	-0.6%	0.2	0.9%	1.0	4.9%
Professional Services	46.5	0.2	0.1	0.4	3.5%	0.4	2.6%	0.8	5.6%
Management Companies	9.2	0.0	0.0	0.0	0.0%	0.0	0.0%	-0.1	-3.2%
Administrative Support	51.5	0.0	0.2	0.5	4.0%	1.1	6.7%	1.4	9.3%
Education and Healthcare	87.9	-0.2	0.1	0.0	0.0%	0.0	0.0%	1.2	4.2%
Leisure and Hospitality	86.1	0.4	0.6	1.5	7.3%	1.8	6.5%	0.0	0.0%
Other Services	28.7	-0.1	-0.2	-0.3	-4.1%	-0.3	-3.1%	0.2	2.1%
Total Government	227.3	0.0	0.3	0.7	1.2%	1.2	1.6%	1.5	2.0%
Federal Government	12.7	0.1	0.0	0.1	3.2%	0.0	0.0%	0.1	2.4%
State and Local Education	90.6	-0.1	-0.1	0.0	0.0%	0.2	0.7%	0.1	0.3%
Other State and Local	124.0	0.2	0.3	0.8	2.6%	1.1	2.7%	1.2	3.0%
Household Statistics									
Labor Force	1030.7	2.3	1.9	2.2	0.9%	-0.6	-0.2%	5.1	1.5%
Household Employment	981.9	-0.2	0.8	-1.8	-0.7%	-4.3	-1.3%	7.6	2.4%
Unemployment Rate	4.7%	0.23%	0.10%	0.38%		0.36%		-0.27%	

The Sacramento MSA is made up of El Dorado, Placer, Yolo & Sacramento counties

Fresno MSA: Employment Charts and Summary



Fresno MSA: Employment Tables (thousands)

	Current	Monthly Change		Quarterly Change		Year-to-date 2006		Year-to-date 2005	
	Level	Mar-06	Feb-06	Abs.	%AR	Abs.	%AR	Abs.	%AR
Payroll Statistics	Apr-06	Apr-06	Mar-06	Abs.	%AR	Abs.	%AR	Abs.	%AR
Total Non-Farm	296.3	-1.3	0.3	0.1	0.1%	1.2	1.2%	3.8	4.0%
Total Private	227.6	-1.4	-0.4	-1.3	-2.3%	-0.3	-0.4%	3.4	4.7%
Construction	22.4	-0.2	-0.1	-0.3	-5.2%	-0.3	-3.9%	0.5	7.6%
Durable Manufacturing	10.7	0.1	0.0	0.2	7.8%	0.3	8.9%	0.0	0.0%
Non-Durable Manufacturing	16.4	-0.1	0.0	-0.1	-2.4%	0.1	1.9%	-0.1	-1.7%
Wholesale Trade	12.8	-0.1	-0.1	-0.2	-6.0%	0.0	0.0%	0.1	2.5%
Retail Trade	34.5	-0.1	0.1	0.2	2.4%	0.4	3.6%	0.8	7.2%
Transportation and Utilities	9.6	0.0	-0.1	0.0	0.0%	0.1	3.2%	-0.2	-6.2%
Information	4.6	0.0	0.1	0.1	9.2%	0.2	14.3%	0.0	0.0%
Financial Activities	14.7	0.0	0.1	0.1	2.8%	0.1	2.1%	0.1	2.1%
Professional Services	10.4	0.0	-0.1	-0.1	-3.8%	-0.2	-5.6%	0.6	18.9%
Management Companies	2.9	0.0	0.0	0.0	0.0%	0.0	0.0%	-0.3	-24.2%
Administrative Support	15.3	0.0	0.0	0.0	0.0%	0.2	4.0%	0.5	10.6%
Education and Healthcare	36.6	-0.3	-0.2	-0.5	-5.3%	-0.2	-1.6%	0.3	2.5%
Leisure and Hospitality	26.0	0.0	0.0	0.0	0.0%	0.0	0.0%	0.8	10.0%
Other Services	10.6	-0.1	-0.1	-0.2	-7.2%	-0.3	-8.0%	0.2	5.8%
Total Government	68.7	0.2	0.6	1.4	8.6%	1.6	7.3%	0.4	1.8%
Federal Government	10.6	0.2	0.5	1.2	61.7%	1.3	48.1%	0.1	3.0%
State and Local Education	33.1	0.0	0.1	0.1	1.2%	0.2	1.8%	0.0	0.0%
Other State and Local	25.0	0.0	0.1	0.2	3.3%	0.2	2.4%	0.3	3.8%
Household Statistics									
Labor Force	406.1	1.0	1.9	1.4	1.4%	-2.8	-2.0%	3.2	2.4%
Household Employment	373.3	-0.8	0.8	-1.2	-1.3%	-4.0	-3.1%	5.8	4.8%
Unemployment Rate	8.1%	0.42%	0.24%	0.61%		0.35%		-0.71%	

The Fresno MSA is made up of Fresno County only now.