

UCLA ANDERSON FORECAST DATA RELEASE
SEASONALLY ADJUSTED REGIONAL JOB DATA FOR CALIFORNIA
May 2006 released June 16, 2006

Headline economic data announced for the U.S. economy are invariably published in seasonally adjusted form, and most of the statewide data are so adjusted as well. California is a very large economy, with many highly diverse regional economies. Unfortunately the regional data are not seasonally adjusted by state agencies. As a result, the local data are not amenable to analysis of recent short-run trends in the local economies, since in the absence of seasonal adjustment, analysts typically look at job levels and growth rates compared to those of a year earlier, in order to abstract from seasonal influences. This practice provides a relevant perspective on how regional economic growth has developed over the past year, but it says little or nothing about how regional growth has progressed in recent months.

To address these deficiencies in the local data, the UCLA Anderson Forecast will publish seasonally adjusted versions of employment data for the ten major metropolitan economies within California. On the 2nd Friday of each month, when the unadjusted regional data are released by EDD, our economists will compile seasonally adjusted versions of the major components of payroll employment, aggregate employment within both the household and payroll surveys, and unemployment rates. Soon after the EDD data release we will publish a summary table of our seasonally adjusted employment data for each of the covered metropolitan regions, along with summary charts.

The ten economic regions covered at this time will be Los Angeles County, Orange County, San Diego County, the Riverside-San Bernardino (Inland Empire) economic region, Ventura County, Santa Clara County (San Jose MSA), the San Francisco-San Mateo-Marín metro region (San Francisco MSA), the Alameda-Contra Costa (Oakland MSA) region, the Sacramento-Placer-El Dorado area (Sacramento MSA) and Fresno-Madera region (Fresno MSA).

Any or all of these summary tables can be obtained through the Media Relations Office at the UCLA Anderson School of Management (call Hilary Rehder, 310-206-7707). For our economists' commentary on the data, please refer to the following contact list. If you are unable to reach one of economists please contact Hilary Rehder. For general information about the UCLA Anderson Forecast please call 310-825-1623.

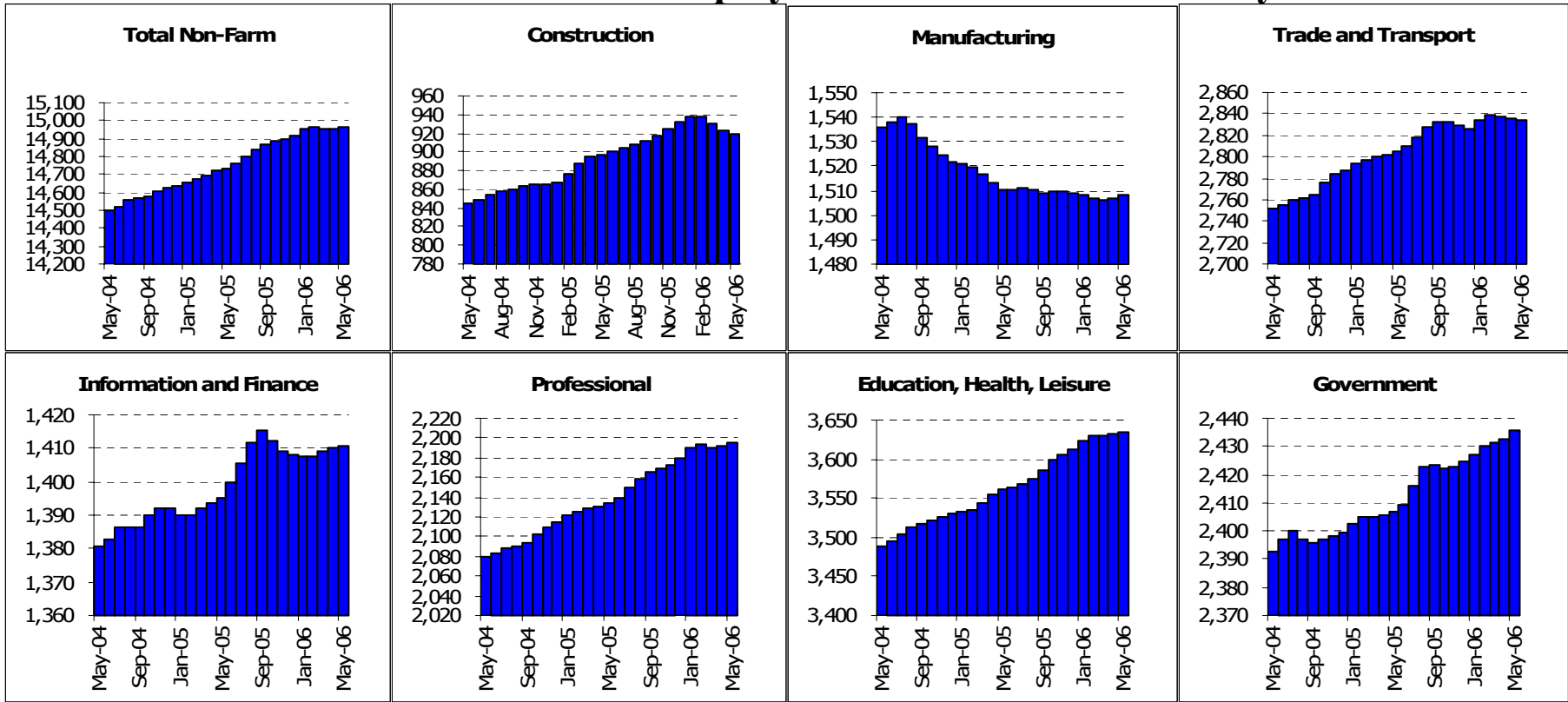
Economist	Contact	Economist	Contact
Christopher Thornberg	310-794-6382 UCLA	Ryan Ratcliff	310-206-4642 UCLA

California Overview

Payroll Employment

	Current	Monthly Change		Quarterly Change		Year-to-date 2006		Year-to-date 2005	
	Level	Apr-06	Mar-06	Quarterly Change		Year-to-date 2006		Year-to-date 2005	
	May-06	May-06	Apr-06	Abs.	%AR	Abs.	%AR	Abs.	%AR
California	14962.4	5.6	-0.2	-4.0	-0.1%	47.7	0.8%	95.5	1.6%
Los Angeles	4053.9	2.0	0.5	4.9	0.5%	15.7	0.9%	5.1	0.3%
Orange County	1505.5	-0.4	-0.5	0.7	0.2%	7.6	1.2%	18.7	3.1%
Riverside	1240.6	2.7	0.9	5.0	1.6%	7.9	1.5%	23.6	4.8%
San Diego	1298.4	0.4	-0.5	0.0	0.0%	7.0	1.3%	10.5	2.0%
Ventura	295.7	0.1	-0.3	-0.4	-0.5%	1.4	1.1%	2.6	2.2%
Santa Barbara	171.8	-0.3	-0.4	-0.8	-1.8%	-0.7	-1.0%	2.8	4.0%
Bakersfield	226.7	0.5	0.0	0.8	1.4%	2.5	2.7%	4.2	4.7%
East Bay	1055.2	1.7	0.6	2.5	1.0%	8.5	2.0%	3.6	0.8%
San Francisco	954.8	0.8	1.0	3.1	1.3%	6.4	1.6%	4.0	1.0%
San Jose	870.8	0.0	-0.3	-0.2	-0.1%	0.5	0.1%	-1.1	-0.3%
Sacramento	898.6	-0.3	-1.2	-1.0	-0.4%	4.2	1.1%	9.5	2.7%
Santa Rosa	186.4	-0.8	-1.5	-3.2	-6.6%	-2.0	-2.5%	1.2	1.6%
Fresno	294.5	-1.5	-1.3	-2.8	-3.7%	-0.6	-0.5%	3.6	3.0%

State of California: Employment Charts and Summary

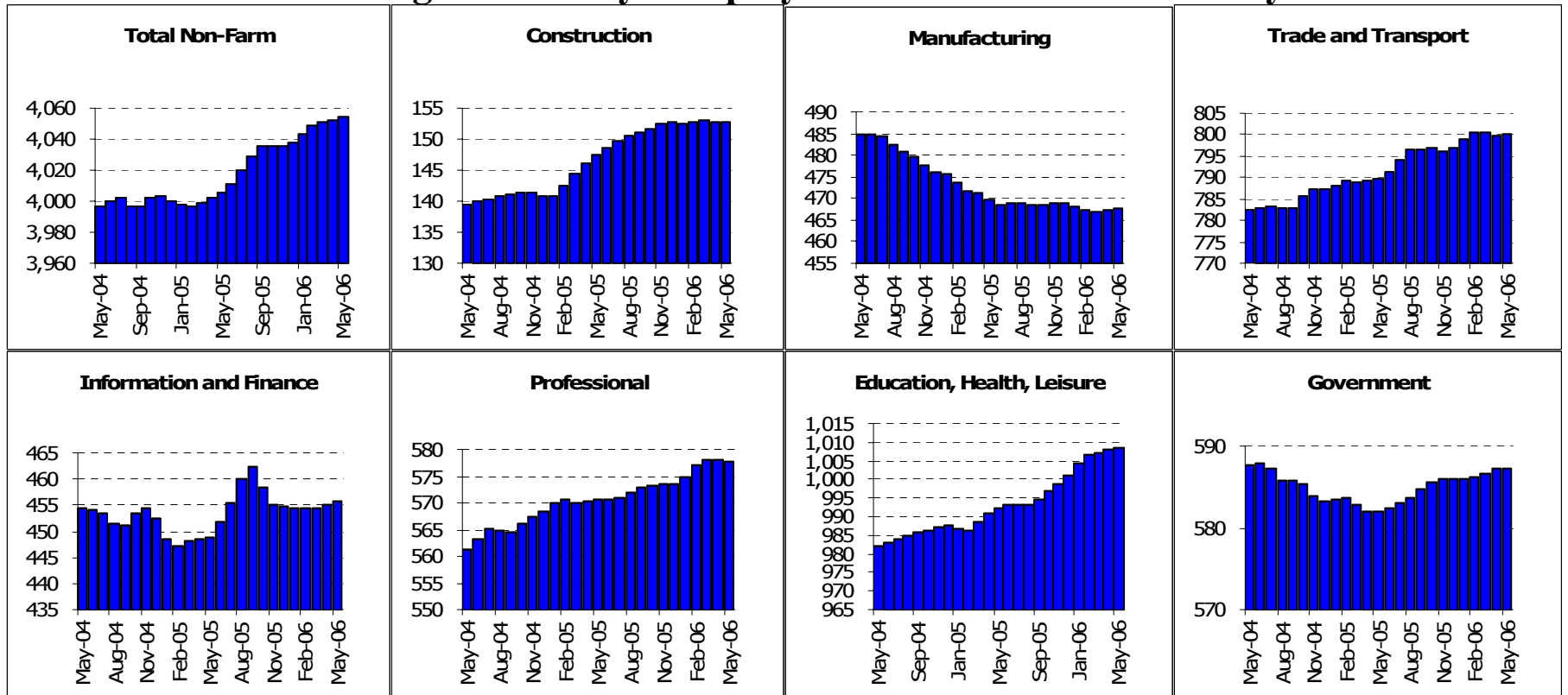


State of California: Employment Tables (thousands)

	Current	Monthly Change		Quarterly Change		Year-to-date 2006		Year-to-date 2005	
	Level	Apr-06	Mar-06	Abs.	%AR	Abs.	%AR	Abs.	%AR
Payroll Statistics	May-06	May-06	Apr-06	Abs.	%AR	Abs.	%AR	Abs.	%AR
Total Non-Farm	14962.4	5.6	-0.2	-4.0	-0.1%	47.7	0.8%	95.5	1.6%
Total Private	12527.0	2.8	-1.4	-9.5	-0.3%	37.2	0.7%	88.0	1.7%
Construction	919.4	-3.4	-6.8	-17.9	-7.4%	-11.9	-3.0%	31.8	9.0%
Durable Manufacturing	964.0	0.5	-0.3	-1.1	-0.5%	-0.6	-0.1%	-5.8	-1.4%
Non-Durable Manufacturing	544.3	1.1	1.1	2.3	1.7%	-0.1	0.0%	-5.6	-2.4%
Wholesale Trade	681.6	0.2	0.2	0.8	0.5%	2.8	1.0%	7.2	2.6%
Retail Trade	1660.3	-2.3	-2.1	-5.7	-1.4%	1.0	0.1%	11.1	1.6%
Transportation and Utilities	492.5	0.3	0.8	1.2	1.0%	3.8	1.9%	-1.5	-0.7%
Information	469.5	0.7	1.5	3.2	2.8%	-0.5	-0.3%	-7.1	-3.5%
Financial Activities	941.3	-0.3	-0.2	-0.2	-0.1%	3.4	0.9%	10.0	2.7%
Professional Services	979.3	2.2	1.1	3.7	1.5%	11.0	2.7%	20.0	5.2%
Management Companies	223.4	0.2	0.2	-0.1	-0.2%	2.2	2.4%	-4.1	-4.3%
Administrative Support	993.6	1.8	0.8	-0.5	-0.2%	3.6	0.9%	2.0	0.5%
Education and Healthcare	1608.7	2.3	1.9	4.8	1.2%	12.0	1.8%	11.4	1.8%
Leisure and Hospitality	1506.8	-0.4	-0.1	-0.6	-0.2%	8.5	1.4%	14.1	2.3%
Other Services	518.6	0.0	0.1	0.4	0.3%	2.3	1.1%	4.0	1.9%
Total Government	2435.4	2.9	1.2	5.5	0.9%	10.5	1.0%	7.5	0.8%
Federal Government	248.2	0.5	0.1	0.9	1.5%	0.7	0.7%	-0.7	-0.7%
State and Local Education	1157.1	0.6	-0.6	-0.5	-0.2%	1.7	0.4%	0.7	0.1%
Other State and Local	1030.1	2.0	1.6	5.2	2.0%	8.2	1.9%	7.4	1.8%
Household Statistics									
Labor Force	17796.5	63.3	41.8	121.1	2.8%	20.5	0.3%	108.6	1.5%
Household Employment	16912.4	45.6	31.2	104.1	2.5%	26.5	0.4%	175.9	2.6%
Unemployment Rate	5.0%	0.08%	0.05%	0.06%		-0.04%		-0.42%	

The California EDD also releases seasonally adjusted data for California. As the EDD uses a different algorithm for this process, their numbers may differ from ours on a month to month basis.

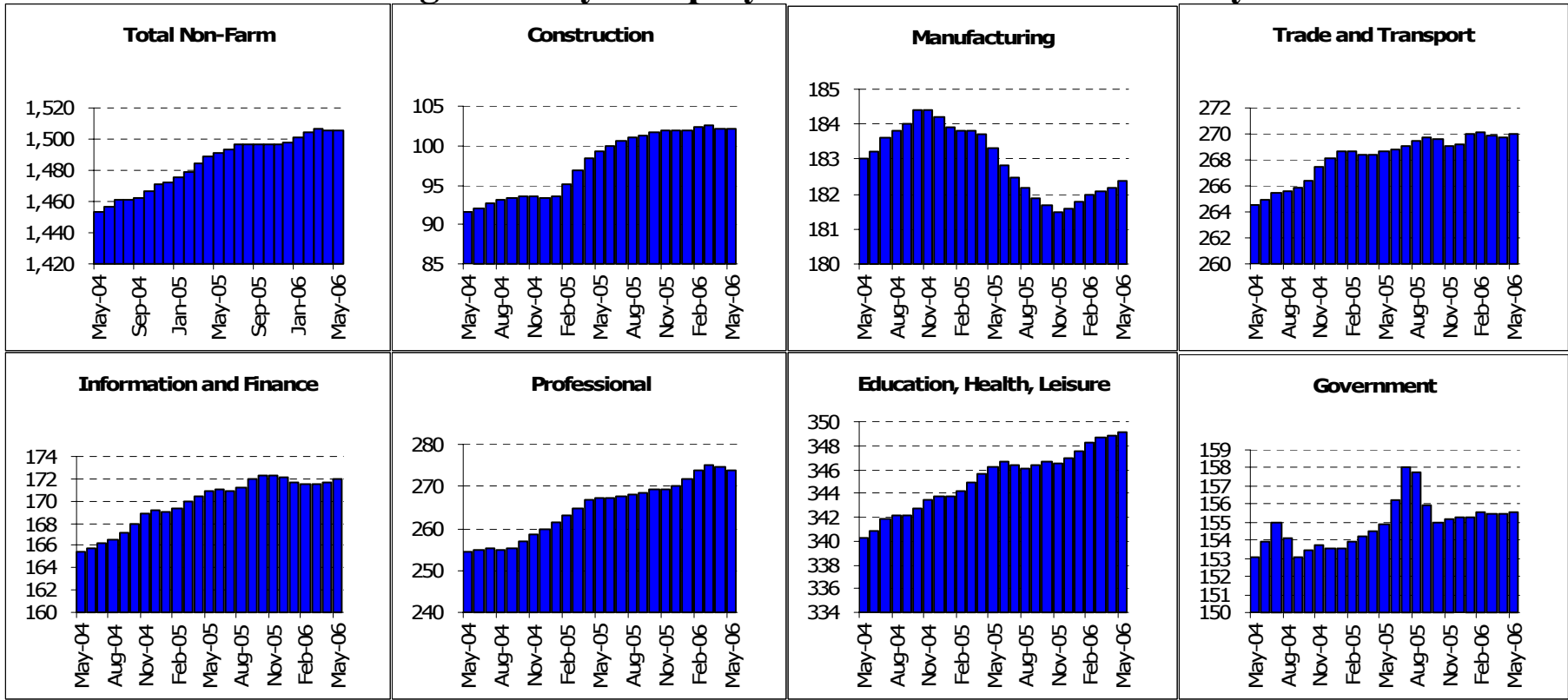
Los Angeles County: Employment Charts and Summary



Los Angeles County: Employment Tables (thousands)

	Current	Monthly Change		Quarterly Change		Year-to-date 2006		Year-to-date 2005	
	Level	Apr-06	Mar-06	Abs.	%AR	Abs.	%AR	Abs.	%AR
Payroll Statistics	May-06	May-06	Apr-06	Abs.	%AR	Abs.	%AR	Abs.	%AR
Total Non-Farm	4053.9	2.0	0.5	4.9	0.5%	15.7	0.9%	5.1	0.3%
Total Private	3466.7	2.0	0.0	3.9	0.5%	14.6	1.0%	6.3	0.4%
Construction	152.9	0.2	-0.3	0.0	0.0%	0.2	0.3%	6.8	12.0%
Durable Manufacturing	261.3	0.2	-0.1	-0.3	-0.5%	-0.1	-0.1%	-2.5	-2.2%
Non-Durable Manufacturing	206.3	0.1	0.1	-0.1	-0.2%	-1.0	-1.2%	-3.8	-4.3%
Wholesale Trade	220.7	0.4	0.3	1.0	1.8%	1.8	2.0%	2.1	2.3%
Retail Trade	414.7	-0.6	-0.7	-1.5	-1.4%	0.9	0.5%	1.9	1.1%
Transportation and Utilities	164.9	0.4	0.3	1.1	2.7%	2.7	4.0%	-1.3	-1.9%
Information	208.5	0.6	0.4	1.3	2.5%	-0.4	-0.5%	-5.2	-5.8%
Financial Activities	247.3	0.2	0.0	0.2	0.3%	1.3	1.3%	1.6	1.6%
Professional Services	253.6	0.4	0.1	0.8	1.3%	3.1	3.0%	4.1	4.1%
Management Companies	70.9	0.0	0.1	0.3	1.7%	1.0	3.5%	-0.2	-0.7%
Administrative Support	253.4	0.4	0.1	-0.3	-0.5%	-0.2	-0.2%	-2.4	-2.2%
Education and Healthcare	474.5	0.6	0.0	0.1	0.1%	1.9	1.0%	1.2	0.6%
Leisure and Hospitality	385.4	-0.1	0.4	1.6	1.7%	4.5	2.9%	2.6	1.7%
Other Services	148.7	0.2	0.2	0.4	1.1%	1.0	1.6%	0.8	1.3%
Total Government	587.2	0.0	0.5	1.0	0.7%	1.1	0.5%	-1.2	-0.5%
Federal Government	53.2	0.1	0.0	0.1	0.8%	0.1	0.5%	-0.1	-0.4%
State and Local Education	295.3	-0.2	-0.1	0.0	0.0%	-0.2	-0.2%	-2.3	-1.9%
Other State and Local	238.7	0.2	0.6	1.1	1.9%	1.4	1.4%	1.3	1.3%
Household Statistics									
Labor Force	4920.6	33.6	13.2	56.1	4.7%	61.7	3.1%	23.8	1.2%
Household Employment	4671.7	21.2	19.9	64.5	5.7%	67.0	3.5%	53.0	2.8%
Unemployment Rate	5.1%	0.22%	-0.15%	-0.23%		-0.17%		-0.64%	

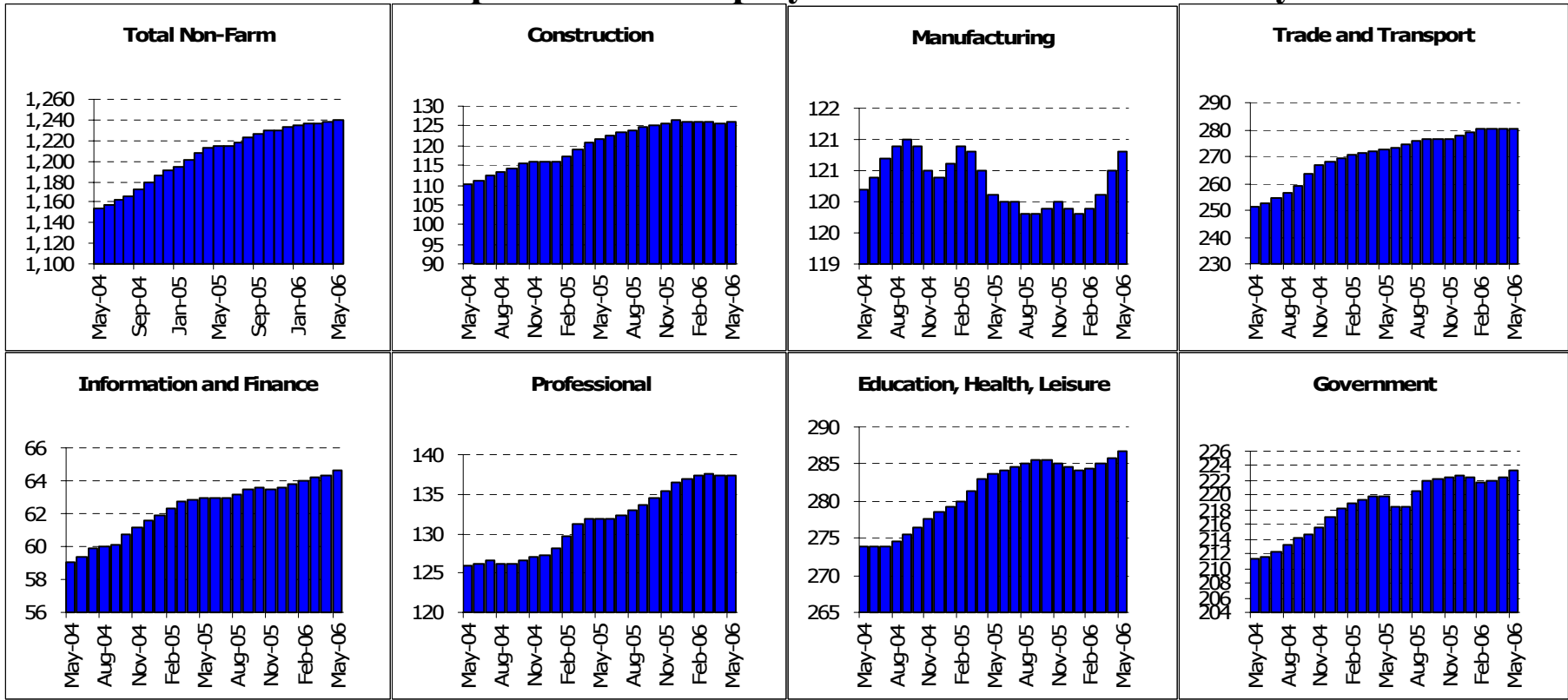
Orange County: Employment Charts and Summary



Orange County: Employment Tables (thousands)

	Current	Monthly Change		Quarterly Change		Year-to-date 2006		Year-to-date 2005	
	Level	Apr-06	Mar-06	Abs.	%AR	Abs.	%AR	Abs.	%AR
Payroll Statistics	May-06	May-06	Apr-06	Abs.	%AR	Abs.	%AR	Abs.	%AR
Total Non-Farm	1505.5	-0.4	-0.5	0.7	0.2%	7.6	1.2%	18.7	3.1%
Total Private	1349.9	-0.5	-0.4	0.7	0.2%	7.3	1.3%	17.3	3.2%
Construction	102.1	-0.1	-0.4	-0.3	-1.2%	0.2	0.5%	6.0	16.1%
Durable Manufacturing	128.6	0.2	0.2	0.4	1.3%	1.1	2.1%	0.3	0.6%
Non-Durable Manufacturing	53.8	-0.1	-0.1	-0.2	-1.5%	-0.1	-0.4%	-1.3	-5.5%
Wholesale Trade	82.8	0.1	0.0	0.1	0.5%	0.0	0.0%	0.2	0.6%
Retail Trade	158.1	0.1	0.0	0.1	0.3%	1.4	2.2%	0.7	1.1%
Transportation and Utilities	29.2	0.1	0.0	0.1	1.4%	0.3	2.5%	-0.4	-3.2%
Information	32.0	0.0	0.0	-0.2	-2.5%	-0.4	-2.9%	-0.6	-4.3%
Financial Activities	139.9	0.2	0.2	0.6	1.7%	0.2	0.3%	2.4	4.3%
Professional Services	105.0	0.1	0.3	0.7	2.7%	1.7	4.0%	2.3	5.6%
Management Companies	30.2	0.2	0.1	0.3	4.1%	0.1	0.8%	-0.3	-2.3%
Administrative Support	138.5	-0.8	-0.6	-1.3	-3.7%	1.9	3.4%	5.2	10.0%
Education and Healthcare	134.8	-0.1	0.0	-0.1	-0.3%	0.3	0.5%	1.3	2.4%
Leisure and Hospitality	165.7	0.2	0.2	0.9	2.2%	1.7	2.5%	0.6	0.9%
Other Services	48.6	0.1	0.0	0.1	0.8%	0.2	1.0%	0.6	3.1%
Total Government	155.6	0.1	0.0	0.0	0.0%	0.3	0.5%	1.4	2.2%
Federal Government	11.4	0.1	0.0	0.1	3.6%	0.0	0.0%	0.1	2.1%
State and Local Education	91.5	0.2	-0.1	0.1	0.4%	0.4	1.1%	1.0	2.7%
Other State and Local	52.7	0.0	0.0	0.0	0.0%	0.0	0.0%	0.4	1.9%
Household Statistics									
Labor Force	1604.5	7.4	3.1	9.8	2.5%	0.6	0.1%	13.8	2.1%
Household Employment	1548.3	4.9	2.5	8.2	2.1%	0.9	0.1%	17.1	2.7%
Unemployment Rate	3.5%	0.14%	0.03%	0.08%		-0.02%		-0.24%	

Inland Empire MSA: Employment Charts and Summary

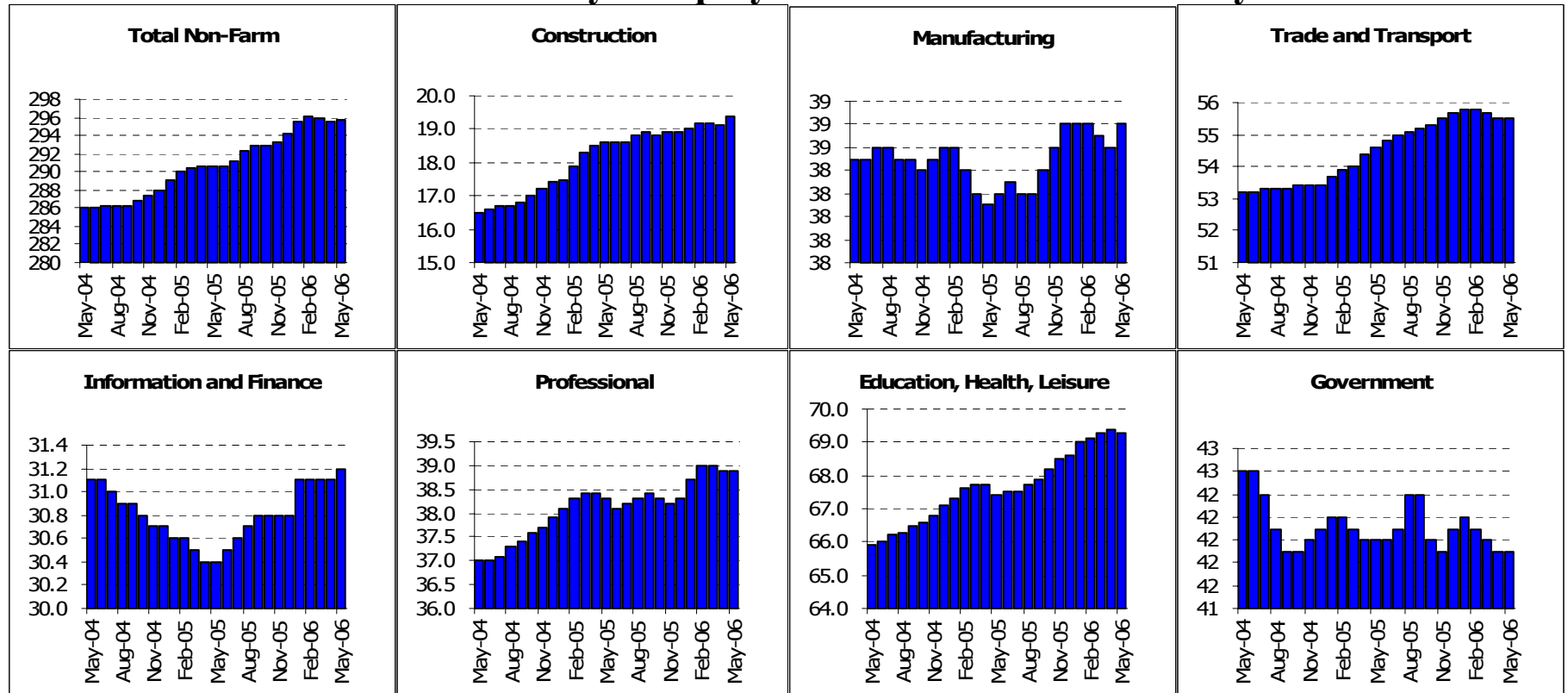


Inland Empire MSA: Employment Tables (thousands)

	Current	Monthly Change		Quarterly Change		Year-to-date 2006		Year-to-date 2005	
	Level	Apr-06	Mar-06	Abs.	%AR	Abs.	%AR	Abs.	%AR
Payroll Statistics	May-06	May-06	Apr-06	Abs.	%AR	Abs.	%AR	Abs.	%AR
Total Non-Farm	1240.6	2.7	0.9	5.0	1.6%	7.9	1.5%	23.6	4.8%
Total Private	1017.3	1.8	0.4	3.6	1.4%	7.3	1.7%	20.7	5.2%
Construction	126.0	0.5	-0.5	-0.2	-0.6%	-0.3	-0.6%	5.7	12.2%
Durable Manufacturing	86.3	0.2	0.3	0.7	3.3%	0.8	2.3%	-0.5	-1.4%
Non-Durable Manufacturing	34.5	0.1	0.0	0.1	1.2%	0.1	0.7%	0.2	1.4%
Wholesale Trade	50.8	0.0	0.0	0.1	0.8%	0.6	2.9%	0.7	3.5%
Retail Trade	168.4	0.2	0.1	0.7	1.7%	2.2	3.2%	2.7	4.1%
Transportation and Utilities	61.5	0.0	0.0	0.2	1.3%	1.0	4.0%	1.0	4.1%
Information	14.6	0.1	0.0	0.2	5.7%	0.3	5.1%	0.3	5.1%
Financial Activities	50.0	0.2	0.1	0.4	3.3%	0.7	3.4%	1.0	5.1%
Professional Services	35.8	0.4	0.3	0.8	9.5%	0.7	4.9%	1.7	13.1%
Management Companies	13.0	0.1	0.1	0.2	6.4%	0.4	7.8%	0.3	6.1%
Administrative Support	88.5	-0.4	-0.3	-1.0	-4.4%	-0.2	-0.5%	2.3	6.8%
Education and Healthcare	120.9	0.3	0.1	0.4	1.3%	0.5	1.0%	1.3	2.6%
Leisure and Hospitality	124.2	0.5	0.6	1.6	5.3%	1.6	3.2%	2.6	5.3%
Other Services	41.6	0.0	0.1	0.2	1.9%	0.0	0.0%	1.2	7.4%
Total Government	223.3	0.9	0.5	1.5	2.7%	0.6	0.6%	2.9	3.2%
Federal Government	18.7	0.1	0.0	0.1	2.2%	0.0	0.0%	0.6	8.3%
State and Local Education	108.8	0.4	0.2	0.2	0.7%	-1.3	-2.8%	-0.5	-1.1%
Other State and Local	95.8	0.5	0.3	1.3	5.6%	2.1	5.5%	2.7	7.4%
Household Statistics									
Labor Force	1721.4	7.9	4.5	12.4	2.9%	-2.3	-0.3%	22.4	3.2%
Household Employment	1641.0	6.3	3.5	10.2	2.5%	-1.8	-0.3%	26.6	4.1%
Unemployment Rate	4.7%	0.07%	0.05%	0.09%		-0.02%		-0.32%	

The Inland Empire is made up of Riverside and San Bernardino counties

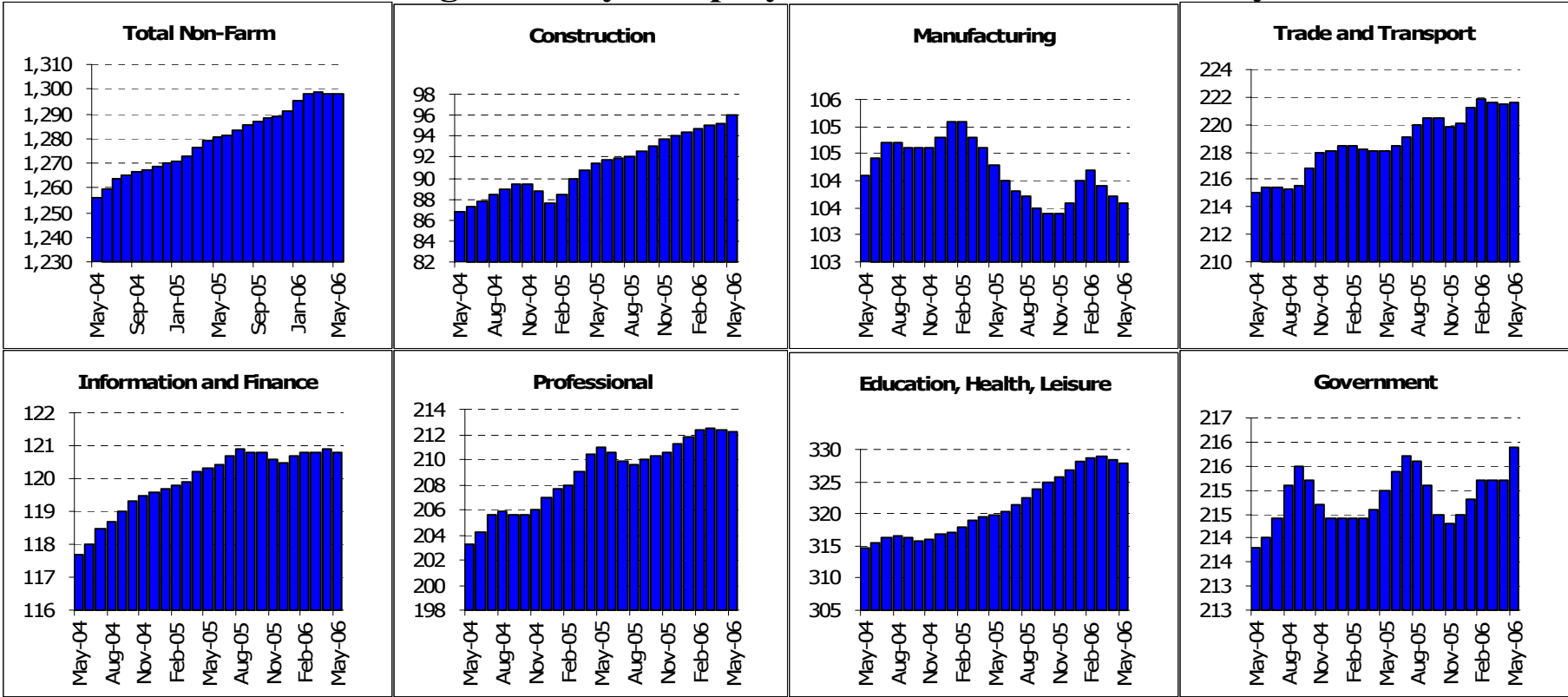
Ventura County: Employment Charts and Summary



Ventura County: Employment Tables (thousands)

	Current	Monthly Change		Quarterly Change		Year-to-date 2006		Year-to-date 2005	
	Level	Apr-06	Mar-06	Abs.	%AR	Abs.	%AR	Abs.	%AR
Payroll Statistics	May-06	May-06	Apr-06	Abs.	%AR	Abs.	%AR	Abs.	%AR
Total Non-Farm	295.7	0.1	-0.3	-0.4	-0.5%	1.4	1.1%	2.6	2.2%
Total Private	253.8	0.2	-0.2	-0.1	-0.2%	1.7	1.6%	2.8	2.8%
Construction	19.4	0.3	-0.1	0.2	4.2%	0.5	6.5%	1.2	17.4%
Durable Manufacturing	24.3	0.1	-0.1	-0.1	-1.6%	-0.2	-1.9%	-0.1	-1.0%
Non-Durable Manufacturing	14.5	0.1	0.0	0.1	2.8%	0.3	5.1%	-0.2	-3.4%
Wholesale Trade	12.7	0.0	0.0	0.0	0.0%	0.0	0.0%	0.0	0.0%
Retail Trade	36.9	-0.1	0.0	-0.1	-1.1%	0.0	0.0%	1.1	7.6%
Transportation and Utilities	5.9	0.0	0.0	0.0	0.0%	0.0	0.0%	0.1	4.3%
Information	6.2	0.1	0.0	0.1	6.7%	0.1	4.0%	-0.2	-7.5%
Financial Activities	25.0	0.0	0.0	0.0	0.0%	0.3	2.9%	-0.1	-1.0%
Professional Services	15.6	0.2	0.0	0.1	2.6%	0.6	9.9%	0.2	3.3%
Management Companies	3.6	0.0	0.0	0.0	0.0%	0.0	0.0%	-0.2	-12.8%
Administrative Support	19.7	0.0	-0.1	-0.2	-4.0%	0.1	1.2%	0.2	2.5%
Education and Healthcare	29.2	0.0	-0.1	-0.1	-1.4%	0.1	0.8%	0.5	4.4%
Leisure and Hospitality	29.7	-0.1	0.2	0.3	4.1%	0.6	5.0%	-0.2	-1.7%
Other Services	10.4	0.0	0.0	0.0	0.0%	0.0	0.0%	0.0	0.0%
Total Government	41.9	0.0	-0.1	-0.2	-1.9%	-0.2	-1.1%	-0.1	-0.6%
Federal Government	7.2	0.0	0.0	0.0	0.0%	-0.1	-3.3%	-0.1	-3.2%
State and Local Education	18.2	0.0	-0.1	-0.2	-4.3%	-0.1	-1.3%	-0.4	-5.0%
Other State and Local	16.5	0.0	0.0	0.1	2.5%	0.1	1.5%	-0.1	-1.5%
Household Statistics									
Labor Force	0.0	-314.9	-104.5	-419.5	####	-422.3	####	3.6	2.1%
Household Employment	0.0	-301.1	-100.1	-401.3	####	-404.1	####	4.2	2.6%
Unemployment Rate	#DIV/0!	#DIV/0!	0.04%	#DIV/0!		#DIV/0!		-0.19%	

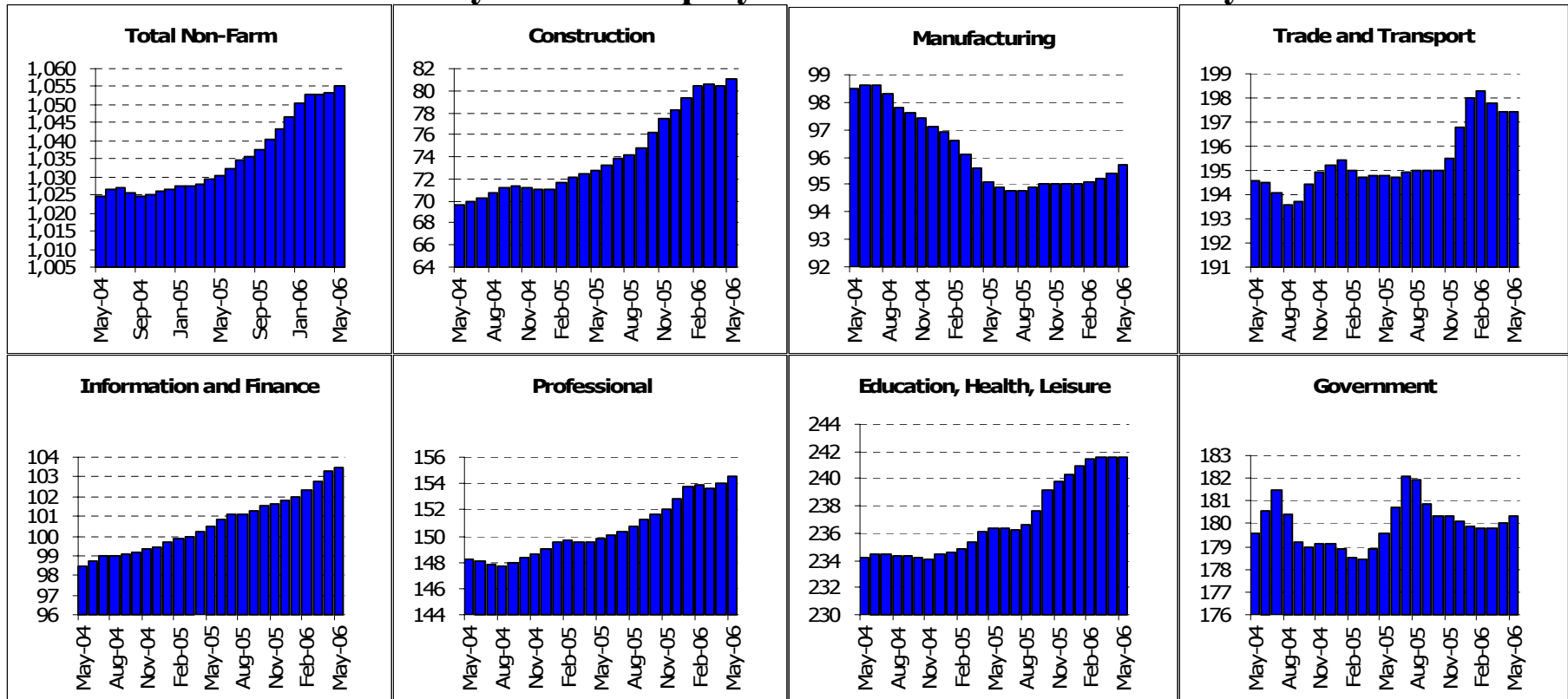
San Diego County: Employment Charts and Summary



San Diego County: Employment Tables (thousands)

	Current	Monthly Change		Quarterly Change		Year-to-date 2006		Year-to-date 2005	
	Level	Apr-06	Mar-06	Abs.	%AR	Abs.	%AR	Abs.	%AR
Payroll Statistics	May-06	May-06	Apr-06	Abs.	%AR	Abs.	%AR	Abs.	%AR
Total Non-Farm	1298.4	0.4	-0.5	0.0	0.0%	7.0	1.3%	10.5	2.0%
Total Private	1082.5	-0.2	-0.6	-0.7	-0.3%	5.6	1.3%	9.9	2.3%
Construction	96.0	0.8	0.2	1.3	5.6%	2.0	5.2%	2.7	7.5%
Durable Manufacturing	78.3	0.0	-0.2	-0.3	-1.5%	0.3	0.9%	-0.2	-0.6%
Non-Durable Manufacturing	25.3	0.0	-0.1	-0.3	-4.6%	-0.2	-1.9%	-0.3	-2.8%
Wholesale Trade	45.4	0.1	0.0	0.2	1.8%	0.6	3.2%	0.7	4.0%
Retail Trade	147.5	0.0	0.0	0.0	0.0%	1.5	2.5%	0.0	0.0%
Transportation and Utilities	28.8	0.1	0.0	0.1	1.4%	0.1	0.8%	-0.7	-5.7%
Information	37.1	0.1	0.1	0.3	3.3%	0.3	2.0%	0.4	2.6%
Financial Activities	83.7	-0.2	0.0	-0.3	-1.4%	0.0	0.0%	0.3	0.9%
Professional Services	106.3	0.2	0.2	0.5	1.9%	0.6	1.4%	4.6	11.2%
Management Companies	18.1	0.2	0.1	0.3	6.9%	0.4	5.5%	-0.2	-2.7%
Administrative Support	87.8	-0.1	-0.4	-0.9	-4.0%	0.0	0.0%	-0.6	-1.6%
Education and Healthcare	125.0	0.1	-0.2	-0.3	-1.0%	0.7	1.4%	0.4	0.8%
Leisure and Hospitality	153.9	-0.6	-0.2	-0.5	-1.3%	0.3	0.5%	2.5	4.2%
Other Services	49.0	0.0	0.0	0.1	0.8%	0.2	1.0%	0.2	1.0%
Total Government	215.9	0.7	0.0	0.7	1.3%	1.4	1.6%	0.6	0.7%
Federal Government	39.1	0.1	0.0	0.0	0.0%	0.1	0.6%	-0.2	-1.2%
State and Local Education	99.3	0.7	0.1	1.0	4.1%	1.2	3.0%	0.5	1.2%
Other State and Local	77.5	0.0	-0.1	-0.2	-1.0%	0.2	0.6%	0.2	0.6%
Household Statistics									
Labor Force	1507.0	4.1	1.2	4.3	1.1%	-3.0	-0.5%	8.5	1.4%
Household Employment	1448.6	3.3	1.1	4.9	1.4%	-0.1	0.0%	11.3	1.9%
Unemployment Rate	3.9%	0.04%	0.00%	-0.05%		-0.18%		-0.21%	

East Bay MSA: Employment Charts and Summary

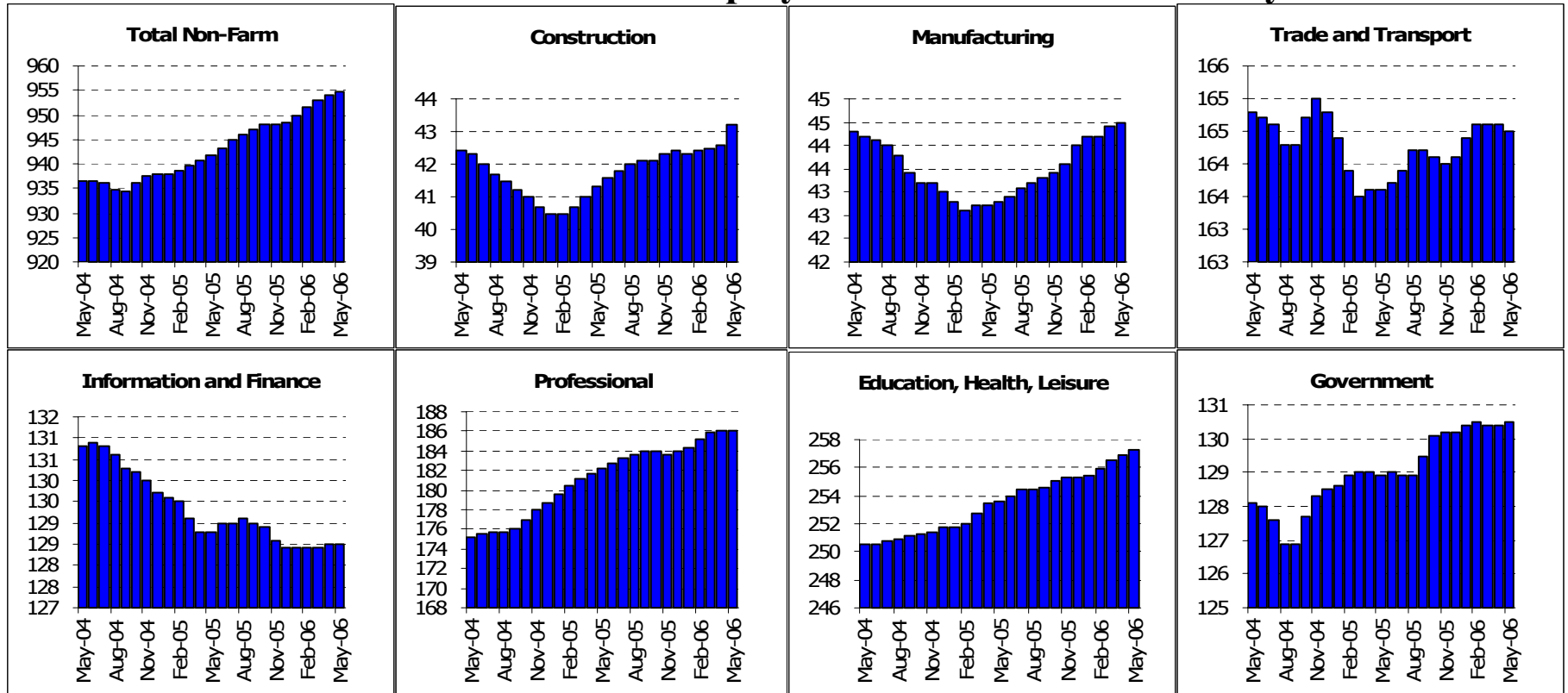


East Bay MSA: Employment Tables (thousands)

	Current	Monthly Change		Quarterly Change		Year-to-date 2006		Year-to-date 2005	
	Level	Apr-06	Mar-06	Abs.	%AR	Abs.	%AR	Abs.	%AR
Payroll Statistics	May-06	May-06	Apr-06	Abs.	%AR	Abs.	%AR	Abs.	%AR
Total Non-Farm	1055.2	1.7	0.6	2.5	1.0%	8.5	2.0%	3.6	0.8%
Total Private	874.9	1.4	0.4	2.1	1.0%	8.4	2.3%	3.1	0.9%
Construction	81.1	0.7	-0.2	0.7	3.5%	2.8	8.8%	1.7	5.8%
Durable Manufacturing	60.2	0.1	0.0	0.1	0.7%	0.5	2.0%	-0.9	-3.5%
Non-Durable Manufacturing	35.5	0.2	0.2	0.4	4.6%	0.3	2.1%	-1.1	-7.3%
Wholesale Trade	48.4	-0.1	-0.2	-0.4	-3.2%	0.2	1.0%	-0.9	-4.3%
Retail Trade	114.6	0.0	-0.1	-0.1	-0.3%	0.9	1.9%	0.6	1.3%
Transportation and Utilities	34.5	0.2	-0.1	0.0	0.0%	0.1	0.7%	-0.2	-1.4%
Information	29.9	0.0	0.1	0.2	2.7%	0.2	1.6%	-0.1	-0.8%
Financial Activities	73.6	0.2	0.4	1.0	5.6%	1.5	5.1%	1.2	4.2%
Professional Services	72.8	0.3	0.1	0.2	1.1%	0.3	1.0%	1.2	4.1%
Management Companies	22.0	0.0	0.0	0.1	1.8%	0.7	8.1%	-0.6	-6.4%
Administrative Support	59.7	0.5	0.3	0.4	2.7%	0.7	2.9%	0.1	0.4%
Education and Healthcare	121.0	0.1	0.2	0.4	1.3%	0.7	1.4%	0.4	0.8%
Leisure and Hospitality	85.2	0.0	-0.1	0.1	0.5%	1.1	3.2%	1.3	3.9%
Other Services	35.4	-0.1	-0.1	-0.3	-3.3%	-0.5	-3.3%	0.2	1.3%
Total Government	180.3	0.3	0.2	0.5	1.1%	0.2	0.3%	0.5	0.7%
Federal Government	17.3	0.1	0.0	0.1	2.3%	-0.1	-1.4%	0.1	1.4%
State and Local Education	86.1	0.2	0.2	0.6	2.8%	0.9	2.6%	0.3	0.9%
Other State and Local	76.9	0.1	-0.1	-0.1	-0.5%	-0.4	-1.2%	0.2	0.6%
Household Statistics									
Labor Force	1267.0	5.0	5.7	11.4	3.7%	1.3	0.2%	0.2	0.0%
Household Employment	1211.0	3.9	4.3	10.1	3.4%	3.8	0.8%	4.3	0.9%
Unemployment Rate	4.4%	0.07%	0.09%	0.06%		-0.20%		-0.33%	

East Bay is also known as the Oakland MSA. It is made up of Alameda and Contra Costa counties.

San Francisco MSA: Employment Charts and Summary

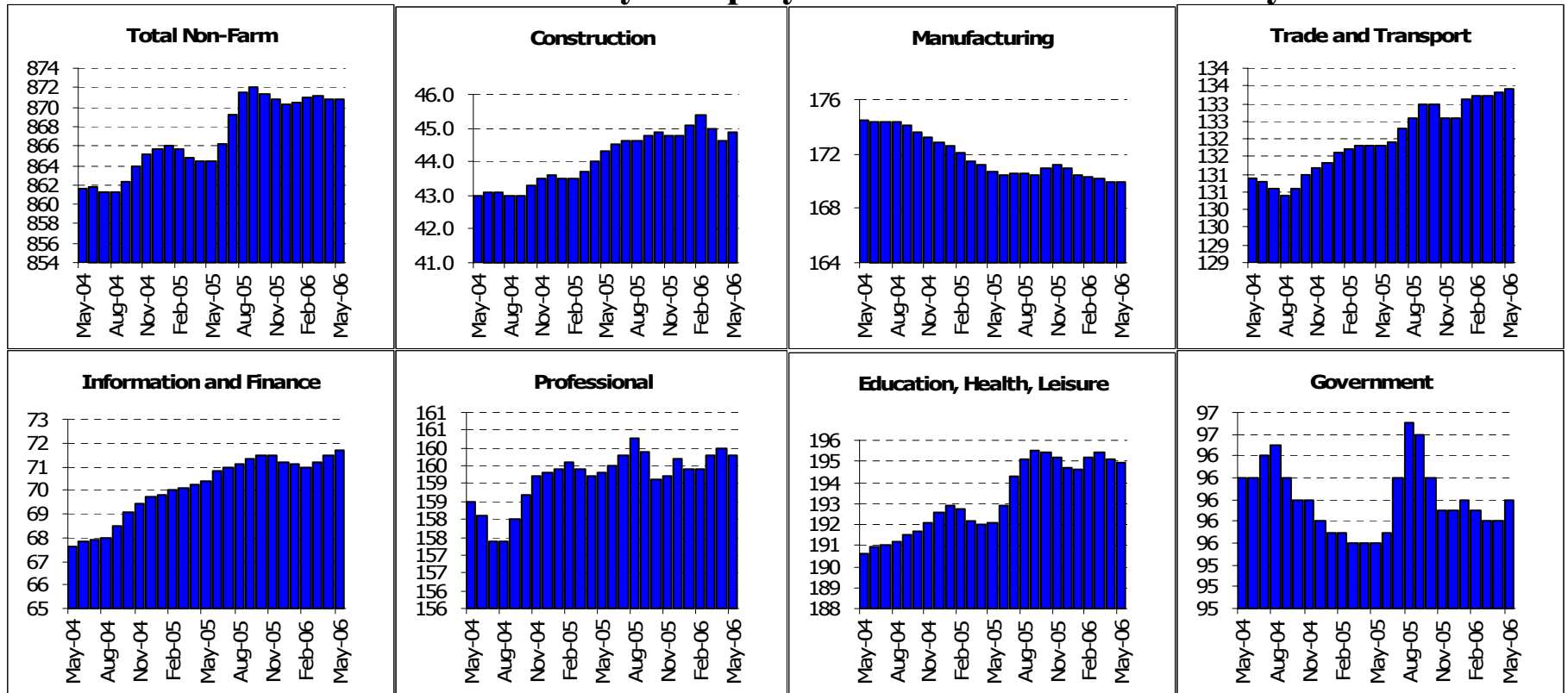


San Francisco MSA: Employment Tables (thousands)

	Current	Monthly Change		Quarterly Change		Year-to-date 2006		Year-to-date 2005	
	Level	Apr-06	Mar-06	Abs.	%AR	Abs.	%AR	Abs.	%AR
Payroll Statistics	May-06	May-06	Apr-06						
Total Non-Farm	954.8	0.8	1.0	3.1	1.3%	6.4	1.6%	4.0	1.0%
Total Private	824.3	0.7	1.0	3.1	1.5%	6.1	1.8%	3.5	1.0%
Construction	43.2	0.6	0.1	0.8	7.8%	0.8	4.6%	0.6	3.6%
Durable Manufacturing	21.4	0.1	0.0	0.1	1.9%	0.3	3.4%	-0.2	-2.2%
Non-Durable Manufacturing	23.1	0.1	0.1	0.2	3.5%	0.6	6.5%	-0.3	-3.3%
Wholesale Trade	26.7	0.0	0.0	0.0	0.0%	0.2	1.8%	-0.1	-0.9%
Retail Trade	94.9	0.0	0.0	0.2	0.8%	0.6	1.5%	-0.1	-0.3%
Transportation and Utilities	43.0	0.1	0.0	0.1	0.9%	0.1	0.6%	-1.1	-5.8%
Information	39.6	-0.2	-0.1	-0.4	-3.9%	-0.6	-3.5%	-1.5	-8.3%
Financial Activities	88.9	0.2	0.2	0.5	2.3%	0.7	1.9%	0.6	1.7%
Professional Services	109.4	0.4	0.3	0.9	3.4%	1.7	3.8%	2.4	5.6%
Management Companies	19.8	-0.1	-0.1	-0.2	-3.9%	-0.2	-2.4%	-0.2	-2.3%
Administrative Support	56.9	0.1	0.1	0.2	1.4%	0.7	3.0%	1.0	4.5%
Education and Healthcare	101.7	0.3	0.1	0.4	1.6%	0.2	0.5%	0.9	2.2%
Leisure and Hospitality	117.9	0.0	0.2	0.7	2.4%	1.5	3.1%	0.7	1.5%
Other Services	37.7	0.1	0.1	0.3	3.2%	0.3	1.9%	0.3	2.0%
Total Government	130.5	0.1	0.0	0.0	0.0%	0.3	0.6%	0.4	0.7%
Federal Government	20.2	0.0	0.0	-0.1	-2.0%	-0.2	-2.3%	-0.4	-4.6%
State and Local Education	49.4	0.0	0.0	0.0	0.0%	0.2	1.0%	0.2	1.0%
Other State and Local	60.9	0.1	0.1	0.2	1.3%	0.3	1.2%	0.7	2.8%
Household Statistics									
Labor Force	913.7	3.8	2.7	7.1	3.2%	-0.1	0.0%	-0.8	-0.2%
Household Employment	877.2	3.4	3.0	8.2	3.8%	2.6	0.7%	3.4	0.9%
Unemployment Rate	4.0%	0.03%	-0.04%	-0.15%		-0.30%		-0.46%	

The San Francisco MSA includes Marin, San Francisco and San Mateo counties

Santa Clara County: Employment Charts and Summary

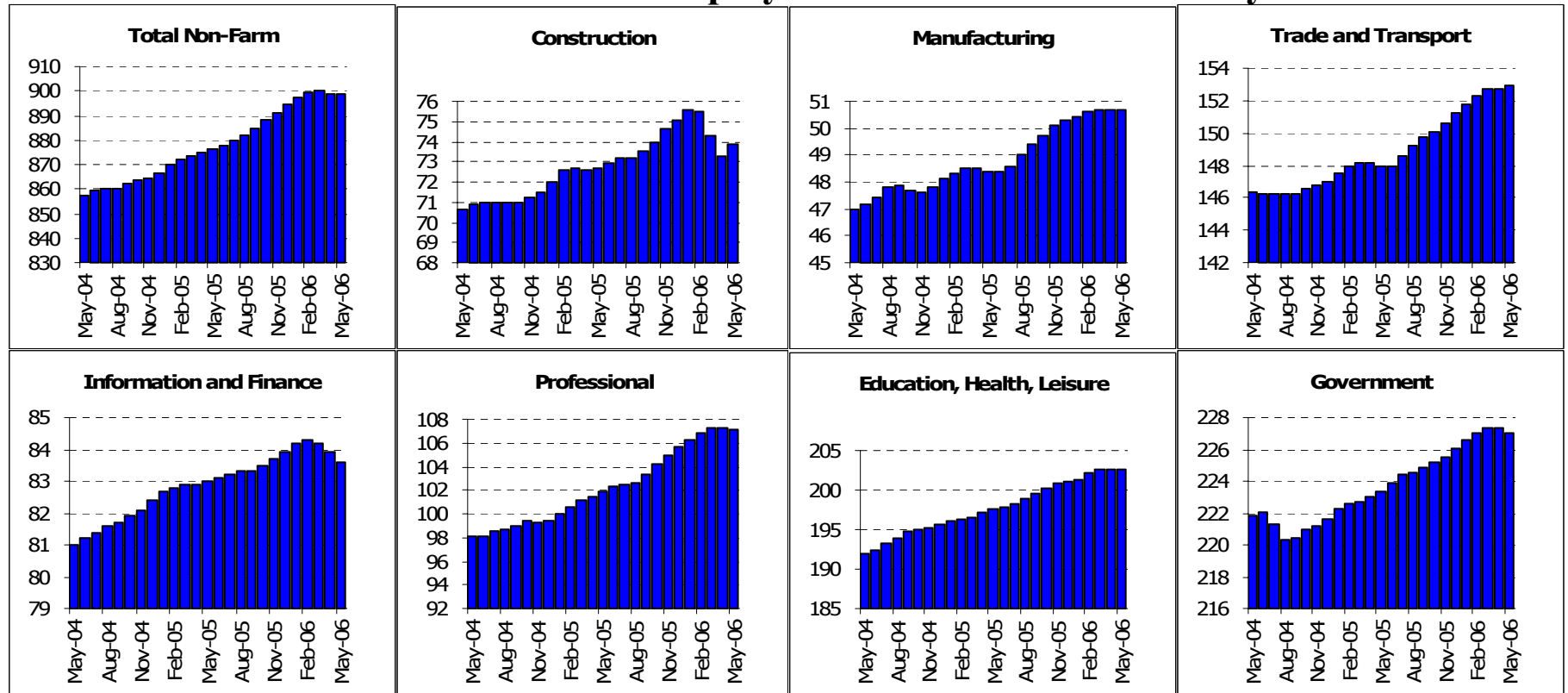


Santa Clara County: Employment Tables (thousands)

	Current	Monthly Change		Quarterly Change		Year-to-date 2006		Year-to-date 2005	
	Level	Apr-06	Mar-06	Abs.	%AR	Abs.	%AR	Abs.	%AR
Payroll Statistics	May-06	May-06	Apr-06	Abs.	%AR	Abs.	%AR	Abs.	%AR
Total Non-Farm	870.8	0.0	-0.3	-0.2	-0.1%	0.5	0.1%	-1.1	-0.3%
Total Private	774.8	-0.2	-0.3	-0.3	-0.2%	0.4	0.1%	-0.8	-0.2%
Construction	44.9	0.3	-0.4	-0.5	-4.3%	0.1	0.5%	0.7	3.9%
Durable Manufacturing	157.3	-0.2	-0.2	-0.7	-1.8%	-1.0	-1.5%	-2.4	-3.5%
Non-Durable Manufacturing	12.6	0.1	0.0	0.2	6.6%	0.0	0.0%	0.2	4.2%
Wholesale Trade	37.1	0.1	0.1	0.3	3.3%	0.7	4.7%	0.3	2.1%
Retail Trade	83.6	0.1	0.2	0.4	1.9%	0.8	2.3%	0.3	0.9%
Transportation and Utilities	12.7	-0.1	-0.1	-0.3	-8.9%	-0.4	-7.2%	-0.2	-3.6%
Information	35.5	0.2	0.2	0.5	5.8%	0.5	3.5%	0.8	5.8%
Financial Activities	36.2	0.0	0.1	0.2	2.2%	0.0	0.0%	-0.1	-0.7%
Professional Services	101.2	0.3	0.3	1.1	4.5%	1.4	3.4%	0.8	2.0%
Management Companies	8.1	0.1	0.1	0.2	10.5%	0.1	3.0%	-0.3	-8.3%
Administrative Support	50.5	-0.3	-0.2	-0.9	-6.8%	-1.4	-6.4%	-0.6	-2.7%
Education and Healthcare	96.6	-0.2	-0.2	-0.3	-1.2%	-0.2	-0.5%	-0.6	-1.5%
Leisure and Hospitality	73.7	0.0	0.1	0.5	2.8%	0.8	2.7%	0.3	1.0%
Other Services	24.6	0.0	-0.2	-0.5	-7.7%	-0.4	-3.8%	-0.2	-1.9%
Total Government	96.0	0.2	0.0	0.1	0.4%	0.1	0.3%	-0.2	-0.5%
Federal Government	11.0	0.0	0.0	0.0	0.0%	-0.1	-2.1%	-0.2	-4.1%
State and Local Education	46.1	0.2	-0.1	0.0	0.0%	0.1	0.5%	0.1	0.5%
Other State and Local	38.9	0.2	0.0	0.2	2.1%	0.3	1.9%	-0.1	-0.6%
Household Statistics									
Labor Force	840.3	0.9	1.8	3.0	1.4%	-5.8	-1.6%	-3.2	-0.9%
Household Employment	800.6	0.6	1.7	3.3	1.7%	-2.6	-0.8%	1.1	0.3%
Unemployment Rate	4.7%	0.03%	0.00%	-0.05%		-0.35%		-0.49%	

The San Jose MSA is Santa Clara and San Benito counties.

Sacramento MSA: Employment Charts and Summary

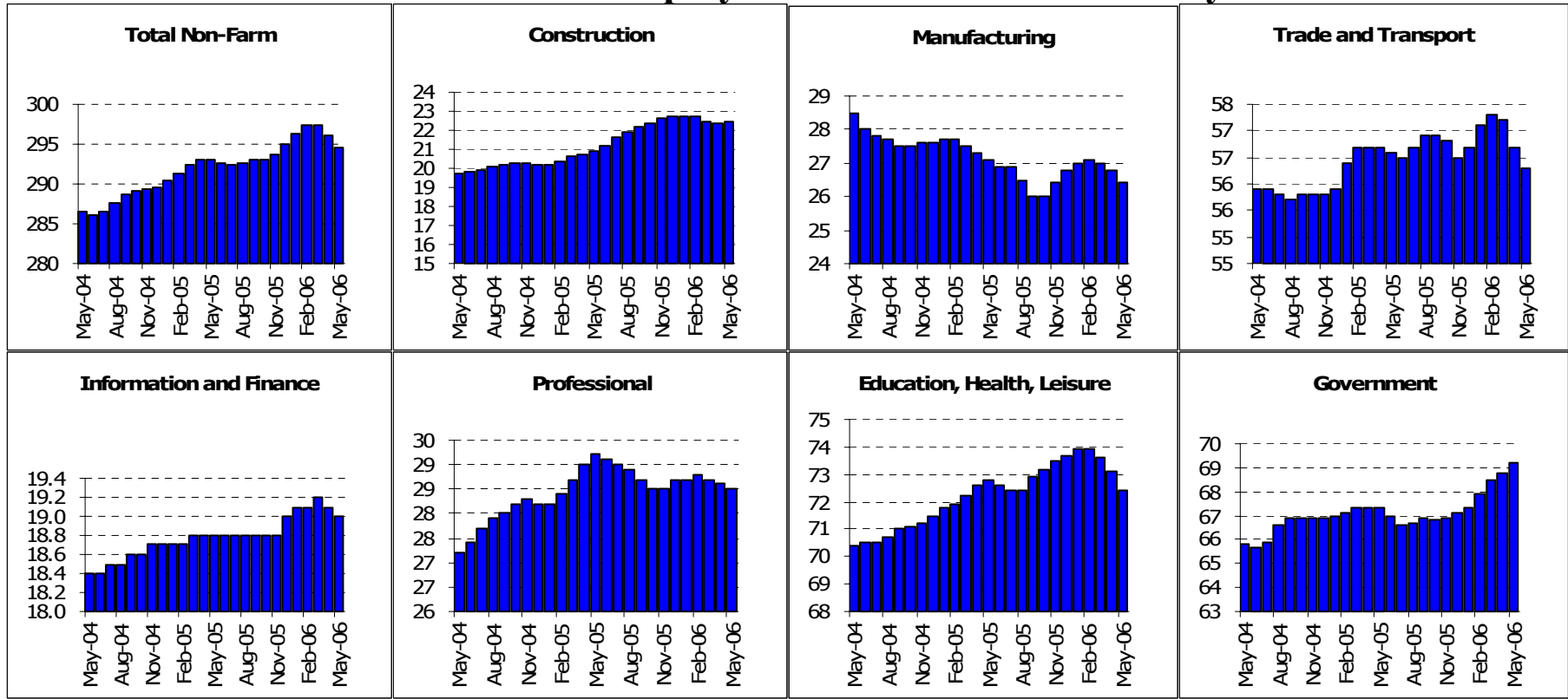


Sacramento MSA: Employment Tables (thousands)

	Current	Monthly Change		Quarterly Change		Year-to-date 2006		Year-to-date 2005	
	Level	Apr-06	Mar-06	Abs.	%AR	Abs.	%AR	Abs.	%AR
Payroll Statistics	May-06	May-06	Apr-06	Abs.	%AR	Abs.	%AR	Abs.	%AR
Total Non-Farm	898.6	-0.3	-1.2	-1.0	-0.4%	4.2	1.1%	9.5	2.7%
Total Private	671.6	0.0	-1.1	-1.0	-0.6%	3.4	1.2%	7.7	2.9%
Construction	73.9	0.6	-1.0	-1.6	-8.2%	-1.2	-3.8%	1.2	4.1%
Durable Manufacturing	36.8	-0.1	0.0	0.0	0.0%	0.4	2.7%	0.7	5.0%
Non-Durable Manufacturing	13.9	0.1	0.0	0.1	2.9%	0.0	0.0%	0.0	0.0%
Wholesale Trade	27.4	0.0	0.1	0.1	1.5%	0.3	2.7%	0.1	0.9%
Retail Trade	101.6	0.1	0.0	0.6	2.4%	1.7	4.1%	0.9	2.2%
Transportation and Utilities	23.9	0.1	0.0	0.2	3.4%	0.2	2.0%	0.1	1.0%
Information	19.3	-0.1	-0.1	-0.3	-6.0%	-0.3	-3.6%	-0.6	-6.8%
Financial Activities	64.3	-0.2	-0.2	-0.4	-2.5%	0.0	0.0%	1.2	4.7%
Professional Services	46.5	0.1	0.1	0.3	2.6%	0.4	2.1%	0.8	4.4%
Management Companies	9.1	0.0	-0.1	-0.1	-4.3%	-0.1	-2.6%	-0.1	-2.6%
Administrative Support	51.5	0.0	0.0	0.1	0.8%	1.1	5.3%	1.7	9.0%
Education and Healthcare	88.1	0.1	-0.1	0.1	0.5%	0.2	0.5%	1.4	3.9%
Leisure and Hospitality	86.0	-0.1	0.4	0.9	4.3%	1.8	5.2%	0.5	1.5%
Other Services	28.6	0.0	-0.2	-0.4	-5.4%	-0.4	-3.3%	0.0	0.0%
Total Government	227.0	-0.3	0.0	0.0	0.0%	0.9	1.0%	1.8	2.0%
Federal Government	12.7	0.1	0.0	0.1	3.2%	0.0	0.0%	0.2	3.9%
State and Local Education	90.3	-0.2	-0.1	-0.5	-2.2%	-0.2	-0.5%	0.3	0.8%
Other State and Local	124.0	-0.1	0.2	0.5	1.6%	1.2	2.4%	1.3	2.6%
Household Statistics									
Labor Force	1031.4	0.6	1.8	4.5	1.8%	0.1	0.0%	7.9	1.9%
Household Employment	984.0	0.7	0.5	2.3	0.9%	-2.2	-0.5%	10.3	2.6%
Unemployment Rate	4.6%	-0.01%	0.12%	0.19%		0.22%		-0.28%	

The Sacramento MSA is made up of El Dorado, Placer, Yolo & Sacramento counties

Fresno MSA: Employment Charts and Summary



Fresno MSA: Employment Tables (thousands)

	Current	Monthly Change		Quarterly Change		Year-to-date 2006		Year-to-date 2005	
	Level	Apr-06	Mar-06	Abs.	%AR	Abs.	%AR	Abs.	%AR
Payroll Statistics	May-06	May-06	Apr-06	Abs.	%AR	Abs.	%AR	Abs.	%AR
Total Non-Farm	294.5	-1.5	-1.3	-2.8	-3.7%	-0.6	-0.5%	3.6	3.0%
Total Private	225.3	-1.9	-1.6	-4.1	-7.0%	-2.6	-2.7%	3.2	3.5%
Construction	22.5	0.1	-0.1	-0.2	-3.5%	-0.2	-2.1%	0.7	8.5%
Durable Manufacturing	10.7	0.1	0.0	0.1	3.8%	0.3	7.1%	0.0	0.0%
Non-Durable Manufacturing	15.7	-0.4	-0.3	-0.8	-18.0%	-0.6	-8.6%	-0.5	-6.8%
Wholesale Trade	12.6	-0.2	-0.1	-0.4	-11.8%	-0.2	-3.7%	0.0	0.0%
Retail Trade	34.3	-0.2	-0.1	-0.3	-3.4%	0.2	1.4%	0.8	5.7%
Transportation and Utilities	9.4	-0.1	-0.1	-0.2	-8.1%	-0.1	-2.5%	-0.2	-5.0%
Information	4.5	0.0	-0.1	0.0	0.0%	0.1	5.5%	0.0	0.0%
Financial Activities	14.5	-0.1	0.0	-0.1	-2.7%	-0.1	-1.6%	0.1	1.7%
Professional Services	10.5	0.1	0.0	0.0	0.0%	-0.1	-2.2%	0.7	17.4%
Management Companies	2.9	0.0	0.0	0.0	0.0%	0.0	0.0%	-0.3	-19.9%
Administrative Support	15.1	-0.1	-0.1	-0.2	-5.1%	0.0	0.0%	0.6	10.1%
Education and Healthcare	36.8	0.0	-0.1	-0.3	-3.2%	0.0	0.0%	0.4	2.7%
Leisure and Hospitality	25.0	-0.7	-0.3	-1.0	-14.5%	-1.0	-9.0%	0.7	6.9%
Other Services	10.6	0.0	-0.1	-0.2	-7.2%	-0.3	-6.5%	0.2	4.6%
Total Government	69.2	0.4	0.3	1.3	7.9%	2.1	7.7%	0.4	1.4%
Federal Government	10.9	0.3	0.3	1.1	53.0%	1.5	42.7%	-0.1	-2.3%
State and Local Education	33.1	0.1	-0.1	0.1	1.2%	0.2	1.5%	0.1	0.7%
Other State and Local	25.2	0.1	0.1	0.3	4.9%	0.5	4.9%	0.3	3.1%
Household Statistics									
Labor Force	403.8	-1.7	0.5	0.7	0.7%	-5.1	-3.0%	2.6	1.5%
Household Employment	369.5	-3.1	-1.7	-3.9	-4.1%	-7.9	-5.0%	4.7	3.1%
Unemployment Rate	8.5%	0.38%	0.53%	1.13%		0.79%		-0.57%	

The Fresno MSA is made up of Fresno County only now.