

UCLA ANDERSON FORECAST DATA RELEASE
SEASONALLY ADJUSTED REGIONAL JOB DATA FOR CALIFORNIA
June 2006 released July 21, 2006

Headline economic data announced for the U.S. economy are invariably published in seasonally adjusted form, and most of the statewide data are so adjusted as well. California is a very large economy, with many highly diverse regional economies. Unfortunately the regional data are not seasonally adjusted by state agencies. As a result, the local data are not amenable to analysis of recent short-run trends in the local economies, since in the absence of seasonal adjustment, analysts typically look at job levels and growth rates compared to those of a year earlier, in order to abstract from seasonal influences. This practice provides a relevant perspective on how regional economic growth has developed over the past year, but it says little or nothing about how regional growth has progressed in recent months.

To address these deficiencies in the local data, the UCLA Anderson Forecast will publish seasonally adjusted versions of employment data for the ten major metropolitan economies within California. On the 3rd Friday of each month, when the unadjusted regional data are released by EDD, our economists will compile seasonally adjusted versions of the major components of payroll employment, aggregate employment within both the household and payroll surveys, and unemployment rates. Soon after the EDD data release we will publish a summary table of our seasonally adjusted employment data for each of the covered metropolitan regions, along with summary charts.

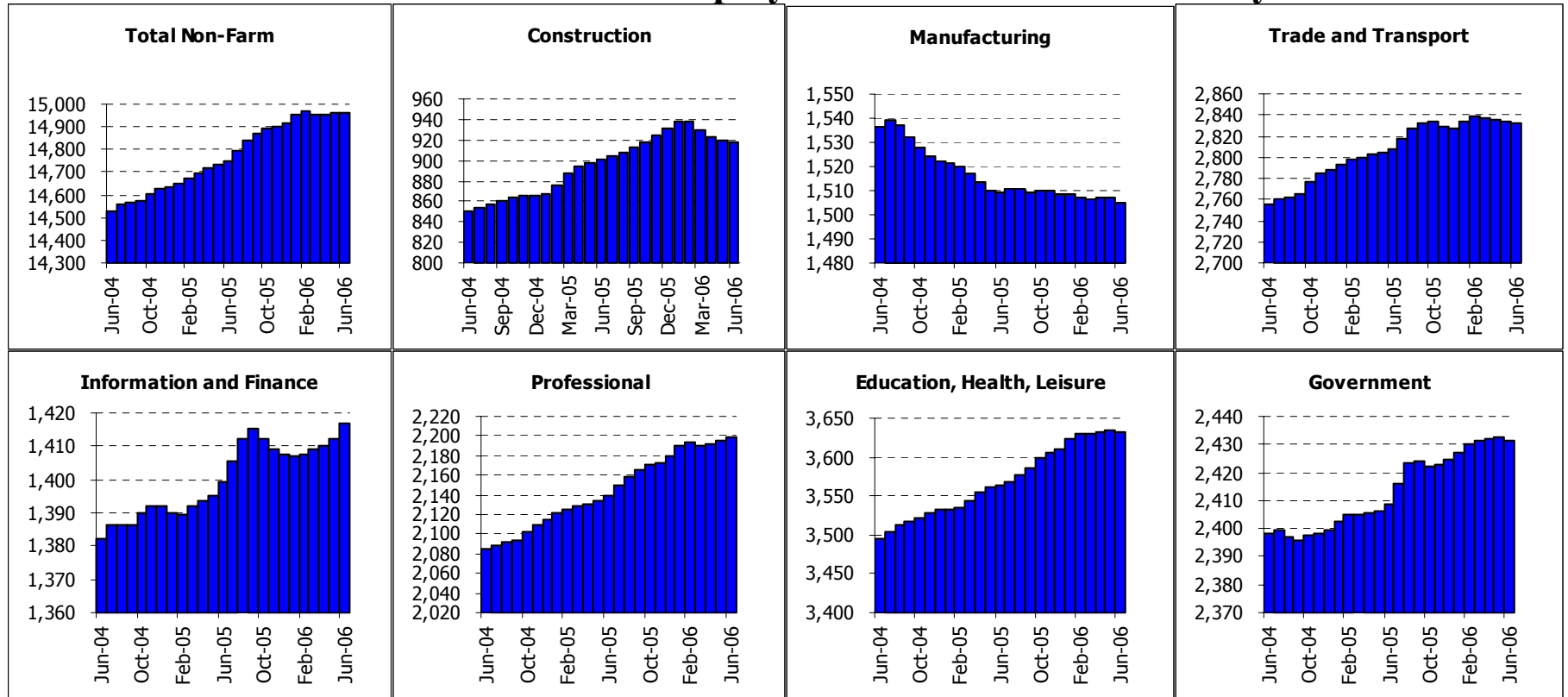
The ten economic regions covered at this time will be Los Angeles County, Orange County, San Diego County, the Riverside-San Bernardino (Inland Empire) economic region, Ventura County, Santa Clara County (San Jose MSA), the San Francisco-San Mateo-Marín metro region (San Francisco MSA), the Alameda-Contra Costa (Oakland MSA) region, the Sacramento-Placer-El Dorado area (Sacramento MSA) and Fresno-Madera region (Fresno MSA).

California Overview

Payroll Employment

	Current	Monthly Change							
	Level	May-06	Apr-06	Quarterly Change		Year-to-date 2006		Year-to-date 2005	
	Jun-06	Jun-06	May-06	Abs.	% AR	Abs.	% AR	Abs.	% AR
California	14959.4	-1.5	3.9	2.1	0.1%	45.6	0.6%	114.7	1.6%
Los Angeles	4064.5	8.9	3.9	13.3	1.3%	25.9	1.3%	9.9	0.5%
Orange County	1507.4	1.4	0.1	1.0	0.3%	9.4	1.3%	20.5	2.8%
Riverside	1242.8	2.2	2.2	5.6	1.8%	10.4	1.7%	24.9	4.2%
San Diego	1300.6	2.5	0.6	2.3	0.7%	8.9	1.4%	11.1	1.8%
Ventura	295.4	-0.2	0.0	-0.4	-0.5%	1.1	0.7%	2.5	1.7%
Santa Barbara	172.5	0.3	0.0	0.0	0.0%	0.0	0.0%	2.7	3.2%
Bakersfield	225.9	0.0	0.0	-0.1	-0.2%	1.7	1.5%	5.2	4.9%
East Bay	1056.1	1.3	1.5	3.3	1.3%	9.4	1.8%	5.2	1.0%
San Francisco	955.9	0.8	1.0	2.8	1.2%	7.3	1.5%	5.0	1.1%
San Jose	870.7	0.6	-0.3	-0.4	-0.2%	0.4	0.1%	0.6	0.1%
Sacramento	898.6	0.8	-0.6	-1.2	-0.5%	4.2	0.9%	10.9	2.5%
Santa Rosa	186.4	-0.1	-0.8	-2.3	-4.8%	-2.0	-2.1%	1.3	1.4%
Fresno	294.4	-0.3	-1.2	-2.8	-3.7%	-0.8	-0.5%	3.1	2.2%

State of California: Employment Charts and Summary



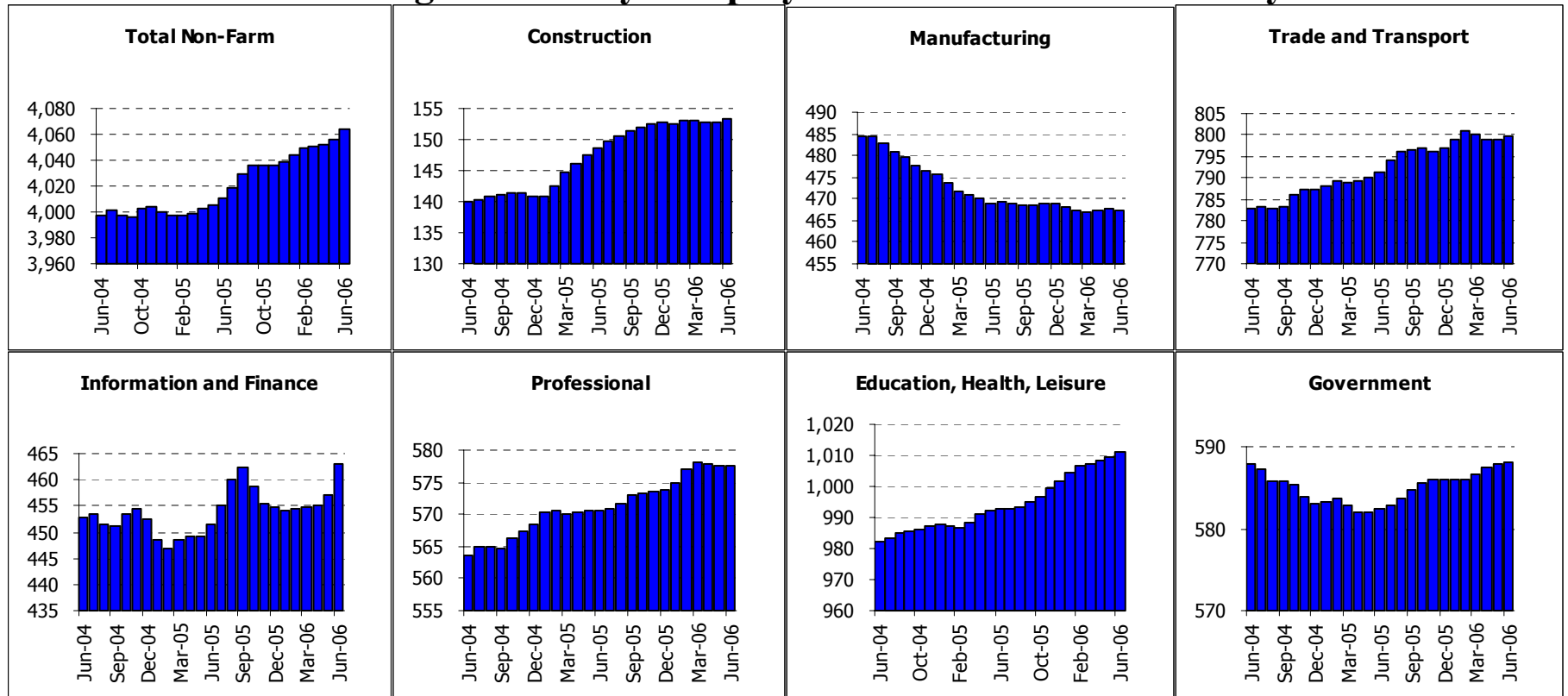
Summary:

State of California: Employment Tables (thousands)

	Current	Monthly Change		Quarterly Change		Year-to-date 2006		Year-to-date 2005	
	Level	May-06	Apr-06						
Payroll Statistics	Jun-06	Jun-06	May-06	Abs.	% AR	Abs.	% AR	Abs.	% AR
Total Non-Farm	14959.4	-1.5	3.9	2.1	0.1%	45.6	0.6%	114.7	1.6%
Total Private	12527.8	-0.4	3.2	1.9	0.1%	38.9	0.6%	105.3	1.7%
Construction	917.6	-2.6	-3.2	-12.3	-5.2%	-13.4	-2.9%	34.8	8.2%
Durable Manufacturing	961.5	-1.7	-0.4	-2.5	-1.0%	-3.0	-0.6%	-7.5	-1.5%
Non-Durable Manufacturing	543.6	-0.2	0.6	1.4	1.0%	-0.8	-0.3%	-5.4	-2.0%
Wholesale Trade	680.6	-0.4	-0.3	-0.7	-0.4%	1.7	0.5%	7.6	2.3%
Retail Trade	1659.3	-1.6	-1.8	-5.5	-1.3%	-0.1	0.0%	14.0	1.7%
Transportation and Utilities	492.3	-0.1	0.3	1.0	0.8%	3.6	1.5%	-1.8	-0.7%
Information	476.6	5.5	2.3	9.5	8.4%	6.7	2.9%	-5.6	-2.3%
Financial Activities	940.4	-0.8	-0.4	-1.4	-0.6%	2.6	0.6%	12.9	2.8%
Professional Services	980.3	2.1	1.5	4.4	1.8%	12.1	2.5%	23.5	5.1%
Management Companies	222.5	-0.5	-0.1	-0.5	-0.9%	1.3	1.2%	-4.1	-3.6%
Administrative Support	996.6	1.6	2.8	5.7	2.3%	6.9	1.4%	4.6	1.0%
Education and Healthcare	1607.3	-0.3	1.5	2.9	0.7%	10.7	1.3%	11.0	1.4%
Leisure and Hospitality	1507.1	-1.0	0.1	-0.4	-0.1%	8.9	1.2%	15.9	2.2%
Other Services	517.7	-0.6	-0.2	-0.7	-0.5%	1.4	0.5%	4.6	1.8%
Total Government	2431.6	-1.1	0.7	0.3	0.0%	6.8	0.6%	9.4	0.8%
Federal Government	248.3	0.4	0.3	0.8	1.3%	0.8	0.6%	-0.7	-0.6%
State and Local Education	1151.4	-2.7	-1.8	-5.8	-2.0%	-3.8	-0.7%	2.1	0.4%
Other State and Local	1031.9	1.4	2.1	5.4	2.1%	10.0	2.0%	8.0	1.6%
Household Statistics									
Labor Force	17796.0	18.9	45.0	105.6	2.4%	21.4	0.2%	138.4	1.6%
Household Employment	16921.3	23.5	31.2	85.9	2.1%	35.7	0.4%	210.6	2.6%
Unemployment Rate	4.9%	-0.03%	0.07%	0.08%		-0.09%		-0.45%	

The California EDD also releases seasonally adjusted data for California. As the EDD uses a different algorithm for this process, their numbers may differ from ours on a month to month basis.

Los Angeles County: Employment Charts and Summary

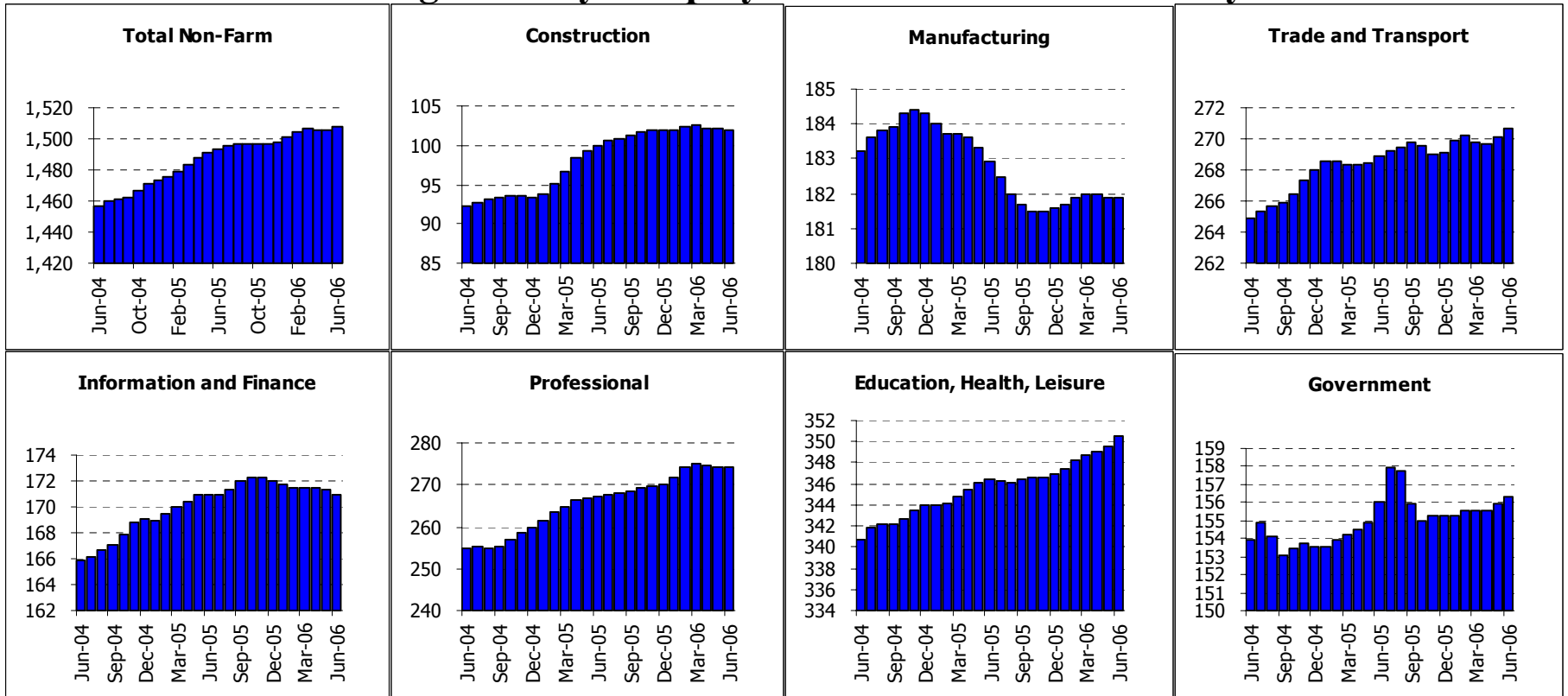


Summary:

Los Angeles County: Employment Tables (thousands)

	Current	Monthly Change		Quarterly Change		Year-to-date 2006		Year-to-date 2005	
	Level	May-06	Apr-06						
Payroll Statistics	Jun-06	Jun-06	May-06	Abs.	% AR	Abs.	% AR	Abs.	% AR
Total Non-Farm	4064.5	8.9	3.9	13.3	1.3%	25.9	1.3%	9.9	0.5%
Total Private	3476.3	8.7	3.3	11.8	1.4%	23.8	1.4%	10.6	0.6%
Construction	153.3	0.4	0.1	0.2	0.5%	0.6	0.8%	7.9	11.5%
Durable Manufacturing	261.5	0.0	0.3	0.3	0.5%	0.1	0.1%	-3.4	-2.5%
Non-Durable Manufacturing	204.6	-1.1	-0.4	-1.5	-2.9%	-2.7	-2.6%	-3.9	-3.7%
Wholesale Trade	220.2	0.1	0.1	0.3	0.5%	1.3	1.2%	2.0	1.9%
Retail Trade	414.0	-0.3	-0.8	-2.0	-1.9%	0.2	0.1%	3.2	1.6%
Transportation and Utilities	165.0	0.3	0.3	0.8	2.0%	2.8	3.5%	-1.2	-1.5%
Information	215.8	5.7	2.1	8.2	16.8%	7.0	6.8%	-3.1	-2.9%
Financial Activities	247.3	0.3	0.0	0.2	0.3%	1.3	1.1%	2.1	1.7%
Professional Services	254.9	1.1	0.6	1.7	2.7%	4.4	3.5%	5.0	4.1%
Management Companies	70.4	-0.3	-0.1	-0.3	-1.7%	0.5	1.4%	-0.2	-0.6%
Administrative Support	252.4	-0.4	0.0	-0.4	-0.6%	-1.2	-0.9%	-3.1	-2.4%
Education and Healthcare	475.7	1.0	0.7	1.7	1.4%	3.0	1.3%	0.8	0.3%
Leisure and Hospitality	386.8	0.8	0.4	1.8	1.9%	5.8	3.1%	2.8	1.5%
Other Services	148.8	0.1	0.2	0.5	1.4%	1.1	1.5%	1.0	1.4%
Total Government	588.2	0.3	0.5	1.5	1.0%	2.2	0.8%	-0.7	-0.2%
Federal Government	53.4	0.2	0.1	0.3	2.3%	0.3	1.1%	-0.1	-0.4%
State and Local Education	295.2	0.0	-0.3	-0.4	-0.5%	-0.3	-0.2%	-1.7	-1.2%
Other State and Local	239.6	0.3	0.6	1.7	2.9%	2.3	1.9%	1.1	0.9%
Household Statistics									
Labor Force	4889.9	-11.7	14.0	15.8	1.3%	31.5	1.3%	23.2	1.0%
Household Employment	4670.3	6.8	13.2	39.3	3.4%	65.4	2.9%	60.4	2.7%
Unemployment Rate	4.5%	-0.37%	0.00%	-0.50%		-0.73%		-0.80%	

Orange County: Employment Charts and Summary

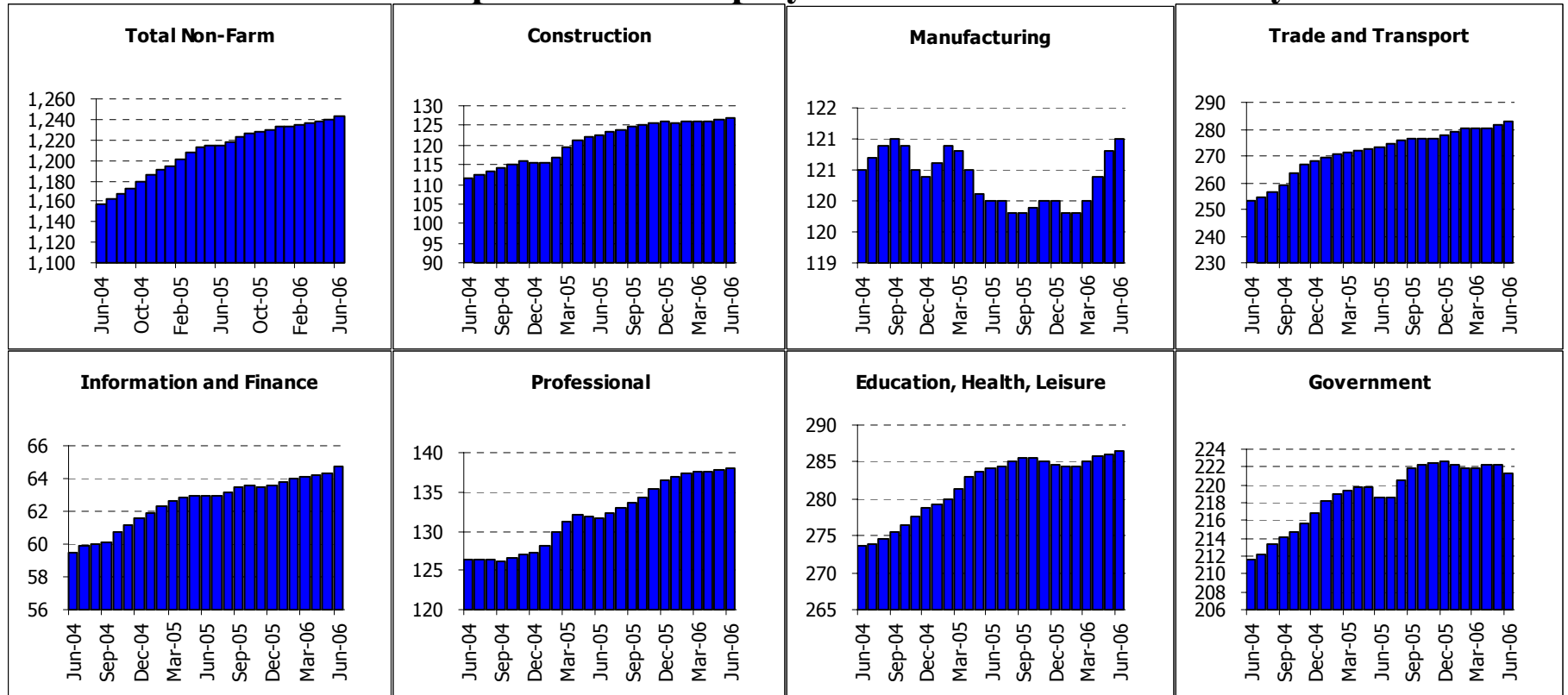


Summary:

Orange County: Employment Tables (thousands)

	Current	Monthly Change		Quarterly Change		Year-to-date 2006		Year-to-date 2005	
	Level	May-06	Apr-06						
Payroll Statistics	Jun-06	Jun-06	May-06	Abs.	% AR	Abs.	% AR	Abs.	% AR
Total Non-Farm	1507.4	1.4	0.1	1.0	0.3%	9.4	1.3%	20.5	2.8%
Total Private	1351.1	1.1	-0.2	0.4	0.1%	8.4	1.3%	18.0	2.7%
Construction	102.0	-0.1	-0.1	-0.6	-2.3%	0.0	0.0%	6.5	14.4%
Durable Manufacturing	127.9	-0.3	-0.1	-0.2	-0.6%	0.3	0.5%	0.0	0.0%
Non-Durable Manufacturing	53.5	-0.1	-0.2	-0.5	-3.7%	-0.4	-1.5%	-1.3	-4.6%
Wholesale Trade	82.7	0.0	0.0	0.0	0.0%	-0.1	-0.2%	0.2	0.5%
Retail Trade	158.6	0.4	0.2	0.6	1.5%	1.9	2.4%	1.2	1.5%
Transportation and Utilities	29.2	0.0	0.1	0.2	2.8%	0.3	2.1%	-0.6	-4.1%
Information	31.7	-0.1	-0.1	-0.3	-3.7%	-0.7	-4.3%	-0.8	-4.7%
Financial Activities	139.2	-0.3	-0.1	-0.3	-0.9%	-0.4	-0.6%	2.7	4.0%
Professional Services	106.0	0.6	0.4	1.4	5.5%	2.6	5.1%	2.7	5.5%
Management Companies	30.3	0.1	0.2	0.4	5.5%	0.3	2.0%	-0.5	-3.2%
Administrative Support	138.1	-0.4	-0.7	-1.8	-5.0%	1.4	2.1%	4.9	7.7%
Education and Healthcare	135.3	0.2	0.1	0.4	1.2%	0.8	1.2%	1.4	2.1%
Leisure and Hospitality	166.5	0.6	0.3	1.2	2.9%	2.5	3.1%	0.5	0.6%
Other Services	48.7	0.1	0.1	0.2	1.7%	0.3	1.2%	0.6	2.5%
Total Government	156.3	0.4	0.3	0.7	1.8%	1.0	1.3%	2.5	3.3%
Federal Government	11.4	0.0	0.1	0.1	3.6%	0.0	0.0%	0.1	1.7%
State and Local Education	92.4	0.5	0.3	0.9	4.0%	1.2	2.6%	2.0	4.5%
Other State and Local	52.5	0.0	-0.1	-0.2	-1.5%	-0.2	-0.8%	0.4	1.5%
Household Statistics									
Labor Force	1606.7	4.0	5.2	12.5	3.2%	2.8	0.3%	17.5	2.2%
Household Employment	1550.7	3.3	3.8	9.7	2.5%	3.4	0.4%	20.7	2.7%
Unemployment Rate	3.5%	0.03%	0.08%	0.15%		-0.04%		-0.24%	

Inland Empire MSA: Employment Charts and Summary



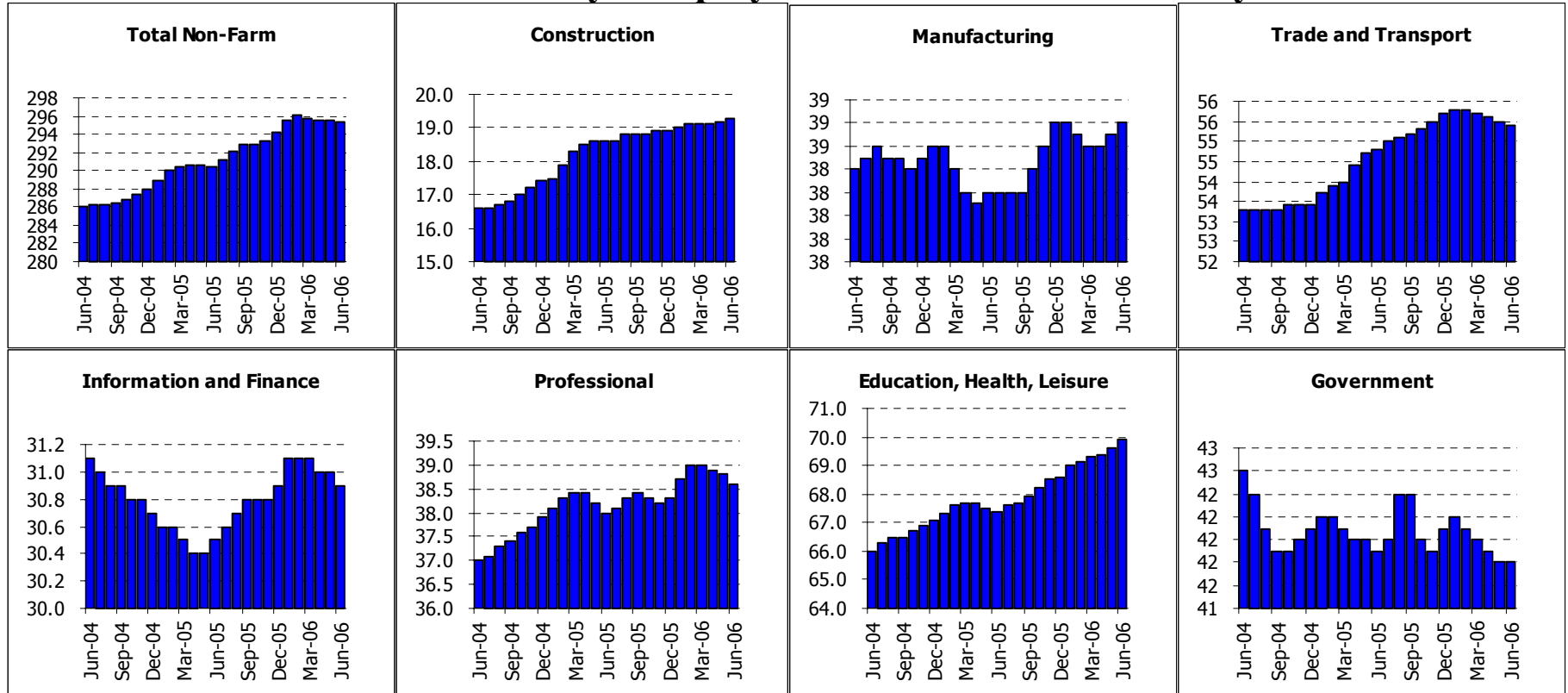
Summary:

Inland Empire MSA: Employment Tables (thousands)

	Current	Monthly Change		Quarterly Change		Year-to-date 2006		Year-to-date 2005	
	Level	May-06	Apr-06						
Payroll Statistics	Jun-06	Jun-06	May-06	Abs.	% AR	Abs.	% AR	Abs.	% AR
Total Non-Farm	1242.8	2.2	2.2	5.6	1.8%	10.4	1.7%	24.9	4.2%
Total Private	1021.6	3.3	2.2	6.3	2.5%	11.8	2.4%	23.1	4.8%
Construction	126.9	0.6	0.3	0.8	2.6%	0.8	1.3%	7.0	12.5%
Durable Manufacturing	86.2	0.1	0.1	0.5	2.4%	0.7	1.6%	-0.6	-1.4%
Non-Durable Manufacturing	34.5	0.0	0.1	0.1	1.2%	0.1	0.6%	0.2	1.2%
Wholesale Trade	51.3	0.3	0.2	0.5	4.0%	1.1	4.4%	0.8	3.3%
Retail Trade	169.6	0.9	0.4	1.5	3.6%	3.4	4.1%	3.4	4.3%
Transportation and Utilities	62.1	0.3	0.2	0.6	4.0%	1.6	5.4%	1.0	3.4%
Information	14.6	0.2	0.0	0.2	5.7%	0.3	4.2%	0.2	2.8%
Financial Activities	50.1	0.2	0.1	0.4	3.3%	0.8	3.3%	1.1	4.7%
Professional Services	36.1	0.3	0.4	1.0	11.9%	1.0	5.8%	2.2	14.1%
Management Companies	13.1	0.1	0.1	0.3	9.7%	0.5	8.1%	0.4	6.8%
Administrative Support	88.9	0.0	-0.2	-0.4	-1.8%	0.3	0.7%	1.8	4.4%
Education and Healthcare	120.2	-0.2	-0.1	-0.4	-1.3%	-0.2	-0.3%	1.4	2.4%
Leisure and Hospitality	124.2	0.3	0.3	1.1	3.6%	1.6	2.6%	2.9	4.9%
Other Services	42.0	0.3	0.1	0.5	4.9%	0.4	1.9%	1.2	6.1%
Total Government	221.2	-1.0	-0.1	-0.7	-1.3%	-1.4	-1.3%	1.7	1.6%
Federal Government	18.6	0.0	0.0	0.0	0.0%	-0.1	-1.1%	0.8	9.2%
State and Local Education	107.1	-0.9	-0.2	-1.1	-4.0%	-2.9	-5.2%	-2.2	-4.0%
Other State and Local	95.5	0.0	0.2	0.5	2.1%	1.8	3.9%	3.0	6.8%
Household Statistics									
Labor Force	1725.9	5.5	6.8	17.1	4.1%	2.4	0.3%	26.2	3.1%
Household Employment	1644.7	4.6	5.3	13.6	3.4%	2.1	0.3%	31.8	4.0%
Unemployment Rate	4.7%	0.04%	0.07%	0.16%		0.01%		-0.41%	

The Inland Empire is made up of Riverside and San Bernardino counties

Ventura County: Employment Charts and Summary

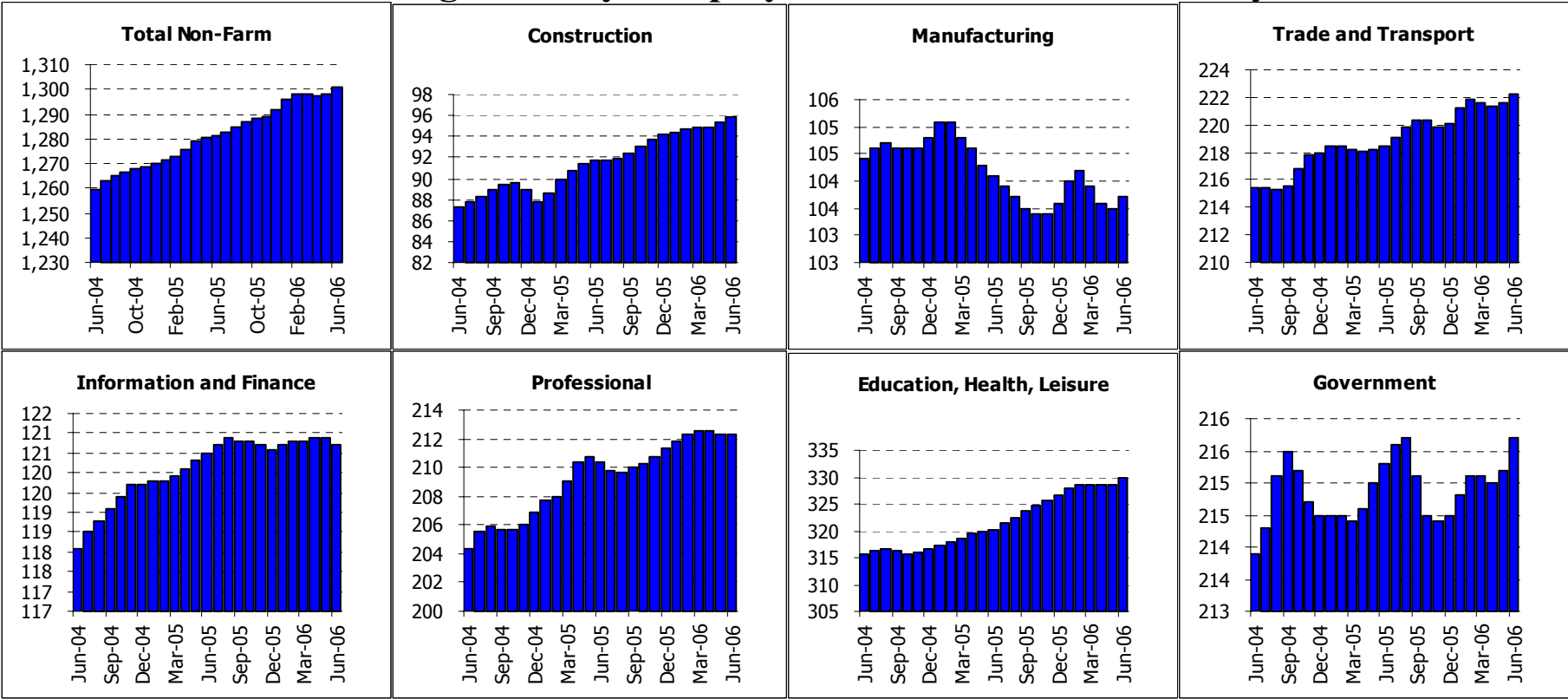


Summary:

Ventura County: Employment Tables (thousands)

	Current	Monthly Change		Quarterly Change		Year-to-date 2006		Year-to-date 2005	
	Level	May-06	Apr-06						
Payroll Statistics	Jun-06	Jun-06	May-06	Abs.	% AR	Abs.	% AR	Abs.	% AR
Total Non-Farm	295.4	-0.2	0.0	-0.4	-0.5%	1.1	0.7%	2.5	1.7%
Total Private	253.6	-0.1	0.1	-0.2	-0.3%	1.4	1.1%	2.7	2.2%
Construction	19.3	0.1	0.1	0.2	4.3%	0.4	4.3%	1.2	14.3%
Durable Manufacturing	24.1	0.0	-0.1	-0.2	-3.3%	-0.4	-3.2%	0.0	0.0%
Non-Durable Manufacturing	14.6	0.1	0.1	0.2	5.7%	0.4	5.7%	-0.2	-2.8%
Wholesale Trade	12.8	0.1	0.0	0.1	3.2%	0.1	1.6%	0.0	0.0%
Retail Trade	36.7	-0.1	-0.2	-0.3	-3.2%	-0.2	-1.1%	1.3	7.5%
Transportation and Utilities	5.9	0.0	0.0	0.0	0.0%	0.0	0.0%	0.1	3.5%
Information	6.1	0.0	0.0	0.0	0.0%	0.0	0.0%	-0.2	-6.2%
Financial Activities	24.8	-0.1	0.0	-0.2	-3.2%	0.0	0.0%	0.0	0.0%
Professional Services	15.4	-0.1	0.1	0.0	0.0%	0.4	5.4%	0.2	2.8%
Management Companies	3.6	0.0	0.0	0.0	0.0%	0.0	0.0%	-0.2	-10.8%
Administrative Support	19.6	-0.1	-0.1	-0.2	-4.0%	0.0	0.0%	0.1	1.0%
Education and Healthcare	29.2	0.0	0.0	-0.1	-1.4%	0.1	0.7%	0.6	4.4%
Leisure and Hospitality	30.1	0.2	0.1	0.5	6.9%	1.0	7.0%	-0.3	-2.1%
Other Services	10.6	0.1	0.1	0.2	7.9%	0.2	3.9%	0.0	0.0%
Total Government	41.8	0.0	-0.1	-0.2	-1.9%	-0.3	-1.4%	-0.2	-0.9%
Federal Government	7.2	0.0	0.0	0.0	0.0%	-0.1	-2.7%	-0.1	-2.6%
State and Local Education	18.1	-0.1	0.0	-0.2	-4.3%	-0.2	-2.2%	-0.6	-6.2%
Other State and Local	16.5	0.1	0.0	0.0	0.0%	0.1	1.2%	0.0	0.0%
Household Statistics									
Labor Force	420.9	-0.3	0.5	1.1	1.1%	-1.3	-0.6%	3.5	1.7%
Household Employment	402.0	-0.4	0.3	0.7	0.7%	-2.1	-1.0%	4.6	2.3%
Unemployment Rate	4.5%	0.03%	0.04%	0.08%		0.20%		-0.30%	

San Diego County: Employment Charts and Summary

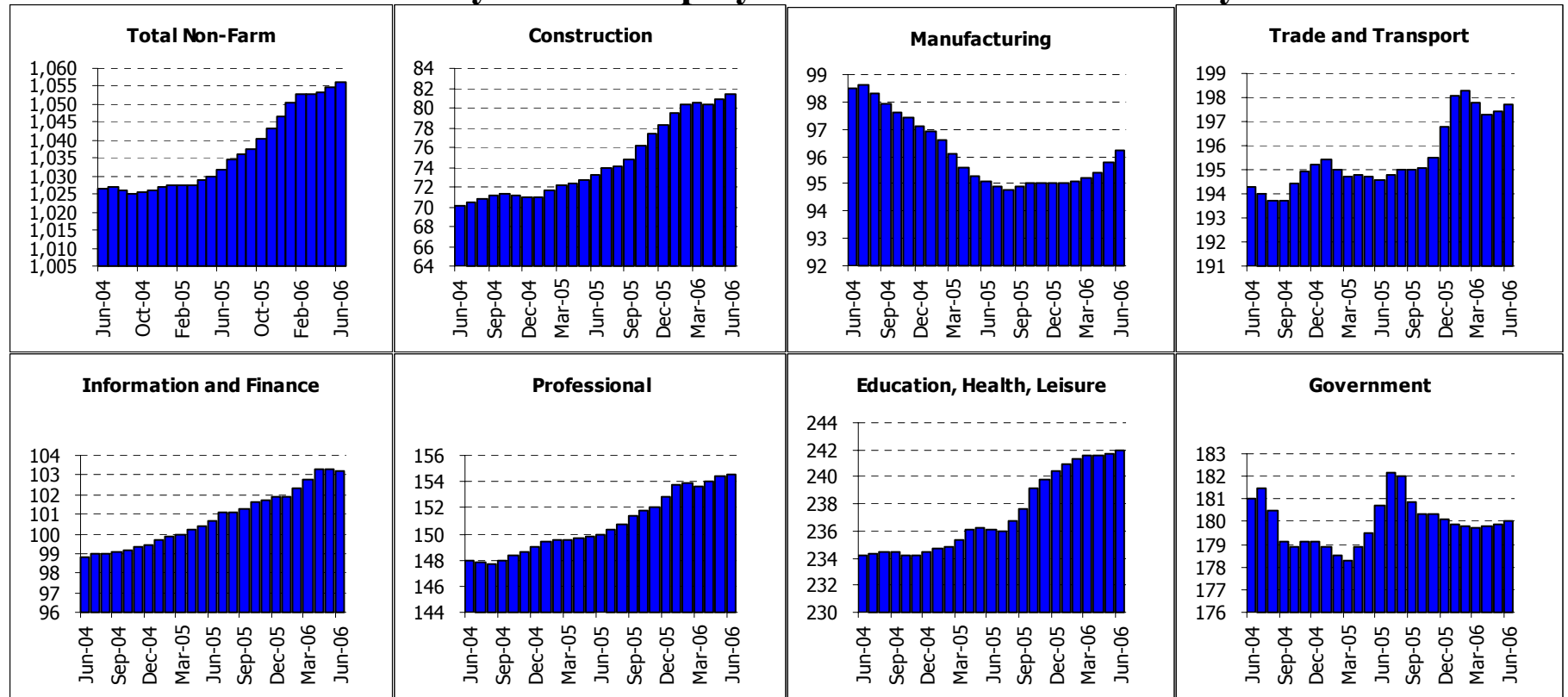


Summary:

San Diego County: Employment Tables (thousands)

	Current	Monthly Change		Quarterly Change		Year-to-date 2006		Year-to-date 2005	
	Level	May-06	Apr-06						
Payroll Statistics	Jun-06	Jun-06	May-06	Abs.	% AR	Abs.	% AR	Abs.	% AR
Total Non-Farm	1300.6	2.5	0.6	2.3	0.7%	8.9	1.4%	11.1	1.8%
Total Private	1084.9	2.0	0.4	1.8	0.7%	7.8	1.5%	10.2	1.9%
Construction	95.9	0.6	0.4	1.0	4.3%	1.7	3.6%	2.8	6.4%
Durable Manufacturing	78.5	0.2	0.0	0.0	0.0%	0.4	1.0%	-0.5	-1.3%
Non-Durable Manufacturing	24.9	-0.2	-0.2	-0.5	-7.6%	-0.6	-4.7%	-0.2	-1.6%
Wholesale Trade	45.3	0.0	0.0	0.0	0.0%	0.5	2.2%	1.0	4.8%
Retail Trade	147.9	0.3	0.1	0.4	1.1%	1.9	2.6%	0.0	0.0%
Transportation and Utilities	28.8	0.1	0.0	0.1	1.4%	0.1	0.7%	-0.7	-4.8%
Information	36.9	-0.1	0.0	0.0	0.0%	0.0	0.0%	0.3	1.6%
Financial Activities	83.8	-0.1	0.0	-0.1	-0.5%	0.1	0.2%	0.5	1.2%
Professional Services	106.6	0.3	0.2	0.7	2.7%	0.9	1.7%	4.6	9.3%
Management Companies	18.0	0.0	0.1	0.2	4.6%	0.3	3.4%	-0.2	-2.3%
Administrative Support	87.7	-0.2	-0.1	-0.6	-2.7%	-0.1	-0.2%	-1.1	-2.5%
Education and Healthcare	125.4	0.3	0.2	0.4	1.3%	1.1	1.8%	0.5	0.8%
Leisure and Hospitality	155.6	0.8	0.2	1.0	2.6%	2.0	2.6%	2.9	4.0%
Other Services	48.7	-0.1	-0.2	-0.3	-2.4%	-0.1	-0.4%	0.0	0.0%
Total Government	215.7	0.5	0.2	0.6	1.1%	1.2	1.1%	0.8	0.7%
Federal Government	39.2	0.1	0.1	0.2	2.1%	0.2	1.0%	-0.2	-1.0%
State and Local Education	98.4	0.1	0.0	0.0	0.0%	0.3	0.6%	1.0	2.1%
Other State and Local	78.1	0.4	0.2	0.5	2.6%	0.8	2.1%	0.0	0.0%
Household Statistics									
Labor Force	1512.5	5.1	4.4	10.9	2.9%	2.8	0.4%	11.9	1.6%
Household Employment	1452.8	4.3	3.1	8.6	2.4%	4.2	0.6%	14.6	2.1%
Unemployment Rate	3.9%	0.04%	0.08%	0.12%		-0.10%		-0.21%	

East Bay MSA: Employment Charts and Summary



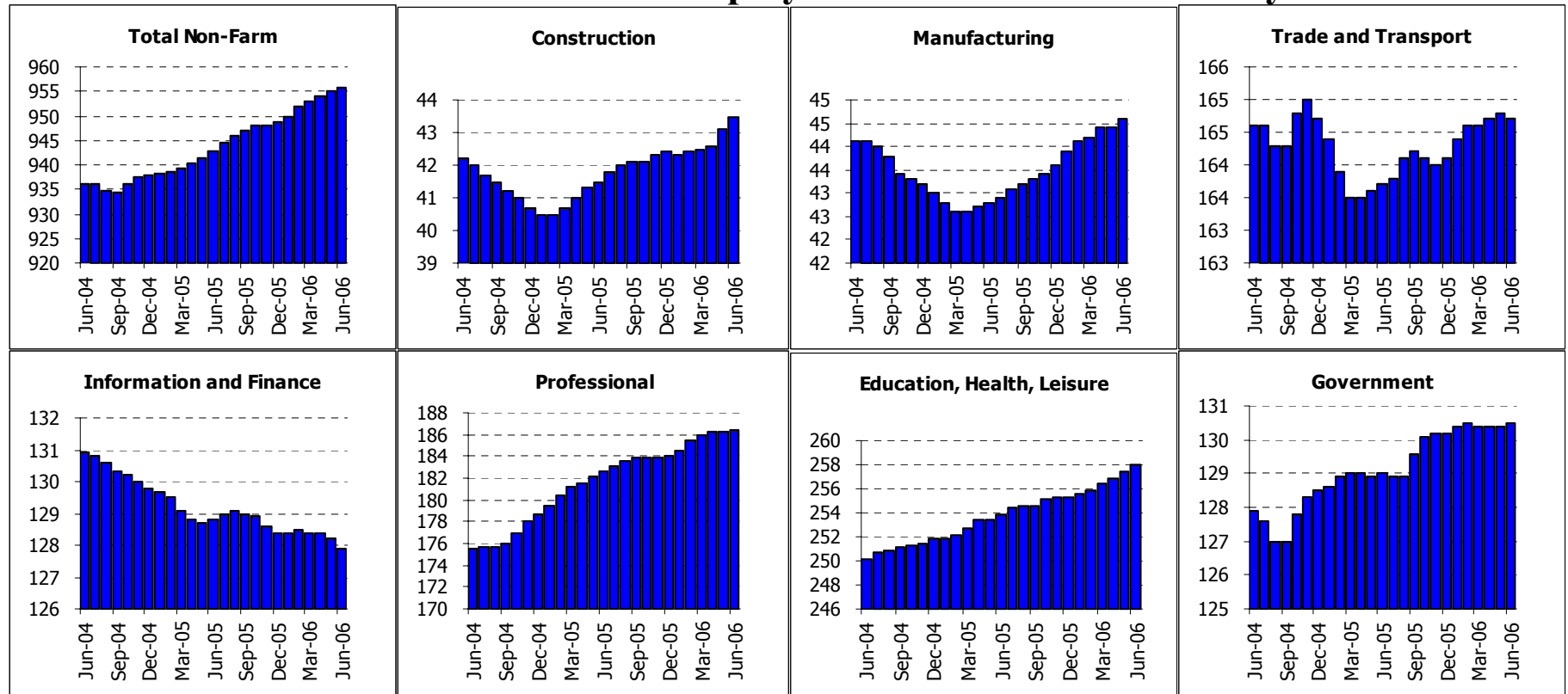
Summary:

East Bay MSA: Employment Tables (thousands)

	Current	Monthly Change		Quarterly Change		Year-to-date 2006		Year-to-date 2005	
	Level	May-06	Apr-06						
Payroll Statistics	Jun-06	Jun-06	May-06	Abs.	% AR	Abs.	% AR	Abs.	% AR
Total Non-Farm	1056.1	1.3	1.5	3.3	1.3%	9.4	1.8%	5.2	1.0%
Total Private	876.1	1.3	1.4	3.1	1.4%	9.6	2.2%	3.7	0.9%
Construction	81.4	0.5	0.5	0.8	4.0%	3.1	8.1%	2.3	6.6%
Durable Manufacturing	60.2	0.1	0.1	0.1	0.7%	0.5	1.7%	-1.1	-3.6%
Non-Durable Manufacturing	35.7	0.2	0.2	0.6	7.0%	0.5	2.9%	-1.0	-5.5%
Wholesale Trade	48.3	-0.1	-0.1	-0.4	-3.2%	0.1	0.4%	-1.0	-4.0%
Retail Trade	114.8	0.2	0.0	0.2	0.7%	1.1	1.9%	0.6	1.1%
Transportation and Utilities	34.5	0.1	0.1	0.1	1.2%	0.1	0.6%	-0.2	-1.2%
Information	29.7	-0.1	-0.1	-0.1	-1.3%	-0.1	-0.7%	-0.3	-1.9%
Financial Activities	73.5	0.0	0.1	0.5	2.8%	1.4	3.9%	1.6	4.7%
Professional Services	72.9	0.2	0.2	0.5	2.8%	0.4	1.1%	1.2	3.4%
Management Companies	22.0	0.0	0.0	0.0	0.0%	0.7	6.7%	-0.6	-5.4%
Administrative Support	59.7	0.2	0.4	0.8	5.5%	0.7	2.4%	0.3	1.1%
Education and Healthcare	121.4	0.3	0.2	0.6	2.0%	1.1	1.8%	0.5	0.9%
Leisure and Hospitality	85.0	-0.1	-0.1	-0.2	-0.9%	0.8	1.9%	1.0	2.5%
Other Services	35.5	0.0	0.0	-0.1	-1.1%	-0.4	-2.2%	0.1	0.6%
Total Government	180.0	0.1	0.1	0.3	0.7%	-0.1	-0.1%	1.6	1.8%
Federal Government	17.4	0.1	0.1	0.2	4.7%	0.0	0.0%	0.1	1.2%
State and Local Education	85.7	0.0	0.0	0.1	0.5%	0.5	1.2%	1.4	3.3%
Other State and Local	76.9	0.0	0.1	0.0	0.0%	-0.4	-1.0%	0.2	0.5%
Household Statistics									
Labor Force	1267.5	1.4	4.1	11.1	3.6%	1.8	0.3%	3.0	0.5%
Household Employment	1212.5	2.0	3.2	9.7	3.3%	5.1	0.8%	7.6	1.3%
Unemployment Rate	4.3%	-0.05%	0.06%	0.07%		-0.27%		-0.38%	

East Bay is also known as the Oakland MSA. It is made up of Alameda and Contra Costa counties.

San Francisco MSA: Employment Charts and Summary



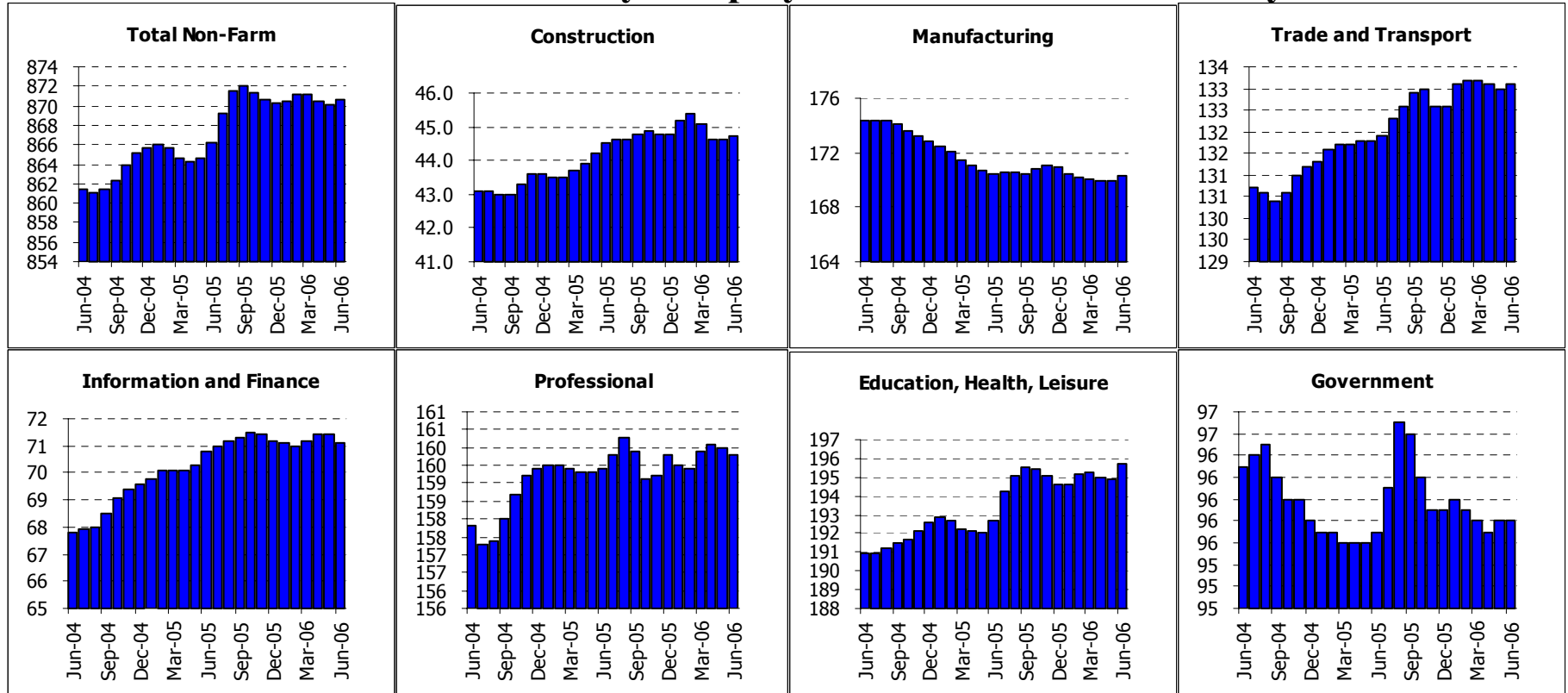
Summary:

San Francisco MSA: Employment Tables (thousands)

	Current	Monthly Change		Quarterly Change		Year-to-date 2006		Year-to-date 2005	
	Level	May-06	Apr-06						
Payroll Statistics	Jun-06	Jun-06	May-06	Abs.	% AR	Abs.	% AR	Abs.	% AR
Total Non-Farm	955.9	0.8	1.0	2.8	1.2%	7.3	1.5%	5.0	1.1%
Total Private	825.4	0.8	0.9	2.8	1.4%	7.1	1.7%	4.4	1.1%
Construction	43.5	0.4	0.5	1.0	9.7%	1.1	5.3%	0.8	4.0%
Durable Manufacturing	21.4	0.0	0.1	0.1	1.9%	0.3	2.9%	-0.2	-1.9%
Non-Durable Manufacturing	23.1	0.1	0.0	0.2	3.5%	0.7	6.3%	-0.2	-1.8%
Wholesale Trade	26.7	0.0	0.0	0.0	0.0%	0.2	1.5%	0.0	0.0%
Retail Trade	95.3	0.2	0.1	0.4	1.7%	1.0	2.1%	0.0	0.0%
Transportation and Utilities	42.6	-0.4	0.0	-0.3	-2.8%	-0.3	-1.4%	-1.1	-4.9%
Information	39.4	-0.2	-0.2	-0.5	-4.9%	-0.8	-3.9%	-1.7	-7.8%
Financial Activities	88.5	-0.1	0.0	0.0	0.0%	0.3	0.7%	0.7	1.6%
Professional Services	109.5	0.2	0.3	0.7	2.6%	1.8	3.4%	2.8	5.5%
Management Companies	19.8	0.0	-0.1	-0.2	-3.9%	-0.2	-2.0%	-0.3	-2.9%
Administrative Support	57.2	0.2	0.1	0.4	2.8%	1.0	3.6%	1.2	4.5%
Education and Healthcare	102.0	0.4	0.3	0.7	2.8%	0.5	1.0%	0.9	1.8%
Leisure and Hospitality	118.3	0.1	0.2	0.7	2.4%	1.9	3.3%	0.8	1.4%
Other Services	37.7	0.1	0.0	0.2	2.2%	0.3	1.6%	0.4	2.2%
Total Government	130.5	0.1	0.0	0.1	0.3%	0.3	0.5%	0.5	0.8%
Federal Government	20.2	0.0	0.0	0.0	0.0%	-0.2	-2.0%	-0.4	-3.8%
State and Local Education	49.2	-0.1	0.0	-0.2	-1.6%	0.0	0.0%	0.3	1.3%
Other State and Local	61.1	0.2	0.1	0.4	2.7%	0.5	1.7%	0.6	2.0%
Household Statistics									
Labor Force	914.6	1.6	2.9	7.4	3.3%	1.0	0.2%	1.5	0.3%
Household Employment	878.2	1.7	2.6	7.4	3.4%	3.7	0.8%	5.7	1.3%
Unemployment Rate	4.0%	-0.02%	0.02%	-0.03%		-0.30%		-0.47%	

The San Francisco MSA includes Marin, San Francisco and San Mateo counties

Santa Clara County: Employment Charts and Summary



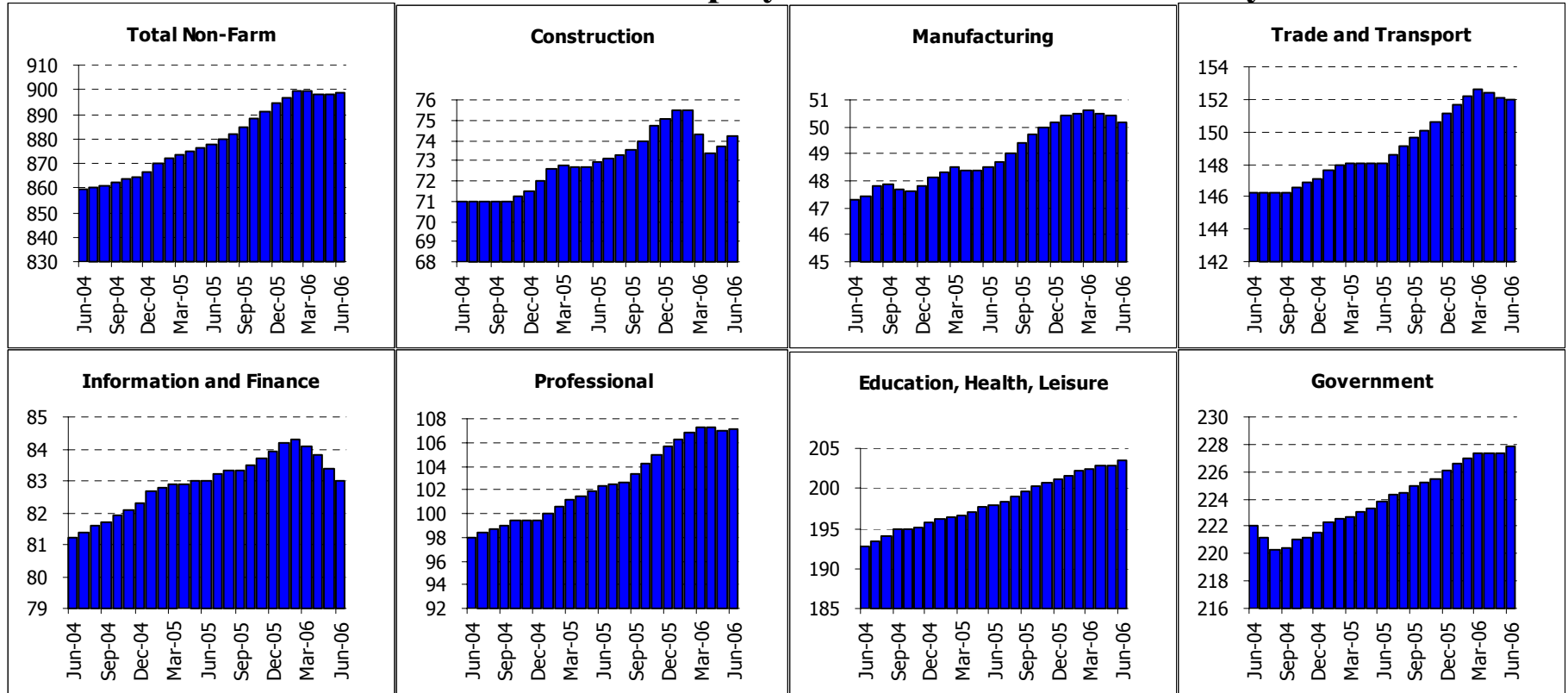
Summary:

Santa Clara County: Employment Tables (thousands)

	Current	Monthly Change		Quarterly Change		Year-to-date 2006		Year-to-date 2005	
	Level	May-06	Apr-06						
Payroll Statistics	Jun-06	Jun-06	May-06	Abs.	% AR	Abs.	% AR	Abs.	% AR
Total Non-Farm	870.7	0.6	-0.3	-0.4	-0.2%	0.4	0.1%	0.6	0.1%
Total Private	774.9	0.7	-0.5	-0.4	-0.2%	0.5	0.1%	0.6	0.2%
Construction	44.7	0.1	0.0	-0.4	-3.5%	-0.1	-0.4%	0.9	4.2%
Durable Manufacturing	157.3	0.0	-0.2	-0.4	-1.0%	-0.9	-1.1%	-2.7	-3.3%
Non-Durable Manufacturing	12.5	0.1	0.0	0.0	0.0%	-0.1	-1.6%	0.3	5.2%
Wholesale Trade	36.9	0.1	-0.1	0.0	0.0%	0.5	2.8%	0.3	1.7%
Retail Trade	83.5	0.1	0.0	0.2	1.0%	0.7	1.7%	0.4	1.0%
Transportation and Utilities	12.6	-0.1	-0.1	-0.3	-9.0%	-0.5	-7.5%	-0.2	-3.0%
Information	34.9	-0.3	0.0	-0.2	-2.3%	-0.1	-0.6%	1.1	6.6%
Financial Activities	36.2	0.0	0.0	0.1	1.1%	0.0	0.0%	0.1	0.6%
Professional Services	101.2	0.1	0.2	0.6	2.4%	1.4	2.8%	1.1	2.3%
Management Companies	8.1	0.0	0.1	0.2	10.5%	0.1	2.5%	-0.3	-6.9%
Administrative Support	50.5	-0.2	-0.2	-0.5	-3.9%	-1.4	-5.3%	-0.9	-3.4%
Education and Healthcare	96.7	0.2	-0.2	-0.3	-1.2%	-0.1	-0.2%	-0.1	-0.2%
Leisure and Hospitality	74.3	0.5	0.1	0.8	4.4%	1.5	4.2%	0.4	1.1%
Other Services	24.7	0.1	0.0	-0.1	-1.6%	-0.3	-2.4%	-0.2	-1.6%
Total Government	95.8	0.0	0.1	0.0	0.0%	-0.1	-0.2%	-0.1	-0.2%
Federal Government	11.0	0.0	0.0	0.0	0.0%	-0.1	-1.8%	-0.2	-3.4%
State and Local Education	45.9	0.0	0.0	-0.1	-0.9%	-0.1	-0.4%	0.1	0.4%
Other State and Local	38.9	0.1	0.1	0.2	2.1%	0.3	1.6%	0.0	0.0%
Household Statistics									
Labor Force	839.6	-0.5	0.7	1.9	0.9%	-6.4	-1.5%	-1.7	-0.4%
Household Employment	800.4	-0.1	0.5	2.1	1.1%	-2.6	-0.6%	3.5	0.9%
Unemployment Rate	4.7%	-0.04%	0.02%	-0.03%		-0.41%		-0.60%	

The San Jose MSA is Santa Clara and San Benito counties.

Sacramento MSA: Employment Charts and Summary



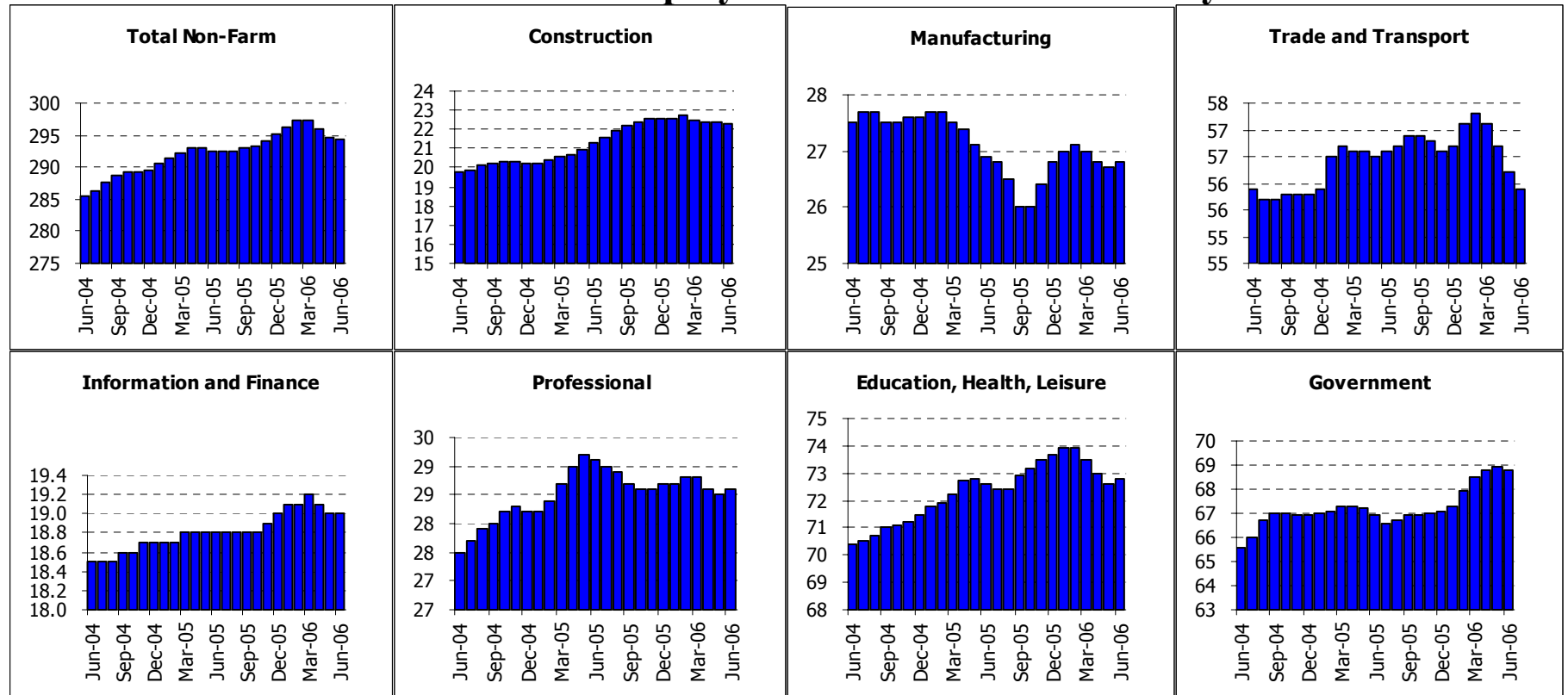
Summary:

Sacramento MSA: Employment Tables (thousands)

	Current	Monthly Change		Quarterly Change		Year-to-date 2006		Year-to-date 2005	
	Level	May-06	Apr-06						
Payroll Statistics	Jun-06	Jun-06	May-06	Abs.	% AR	Abs.	% AR	Abs.	% AR
Total Non-Farm	898.6	0.8	-0.6	-1.2	-0.5%	4.2	0.9%	10.9	2.5%
Total Private	670.8	0.3	-0.6	-1.7	-1.0%	2.6	0.8%	8.7	2.7%
Construction	74.2	0.5	0.3	-0.1	-0.5%	-0.9	-2.4%	1.4	4.0%
Durable Manufacturing	36.4	-0.2	-0.1	-0.4	-4.3%	0.1	0.6%	0.7	4.1%
Non-Durable Manufacturing	13.7	-0.1	0.0	0.0	0.0%	-0.2	-2.9%	0.0	0.0%
Wholesale Trade	27.5	0.1	0.0	0.2	3.0%	0.4	3.0%	0.1	0.8%
Retail Trade	100.8	-0.3	-0.3	-0.6	-2.3%	0.9	1.8%	0.8	1.7%
Transportation and Utilities	23.6	0.0	-0.1	-0.1	-1.7%	-0.1	-0.8%	0.2	1.7%
Information	19.0	-0.2	-0.2	-0.5	-9.9%	-0.6	-6.0%	-0.7	-6.7%
Financial Activities	64.0	-0.2	-0.2	-0.6	-3.7%	-0.3	-0.9%	1.4	4.6%
Professional Services	46.7	0.2	0.1	0.4	3.5%	0.6	2.6%	1.1	5.1%
Management Companies	9.2	0.1	0.0	0.0	0.0%	0.0	0.0%	-0.1	-2.1%
Administrative Support	51.2	-0.1	-0.1	-0.3	-2.3%	0.8	3.2%	1.8	7.9%
Education and Healthcare	88.3	0.3	0.0	0.2	0.9%	0.4	0.9%	1.4	3.3%
Leisure and Hospitality	86.8	0.4	0.2	1.1	5.2%	2.6	6.3%	0.9	2.2%
Other Services	28.4	-0.1	-0.1	-0.3	-4.1%	-0.6	-4.1%	-0.1	-0.7%
Total Government	227.8	0.5	0.0	0.5	0.9%	1.7	1.5%	2.2	2.0%
Federal Government	12.7	0.1	0.0	0.1	3.2%	0.0	0.0%	0.2	3.2%
State and Local Education	90.9	0.5	0.0	0.3	1.3%	0.4	0.9%	0.7	1.6%
Other State and Local	124.2	0.0	0.1	0.3	1.0%	1.3	2.1%	1.3	2.2%
Household Statistics									
Labor Force	1032.0	0.6	0.6	3.1	1.2%	0.7	0.1%	10.3	2.1%
Household Employment	985.3	1.3	0.6	2.5	1.0%	-0.8	-0.2%	13.3	2.8%
Unemployment Rate	4.5%	-0.07%	0.00%	0.04%		0.14%		-0.35%	

The Sacramento MSA is made up of El Dorado, Placer, Yolo & Sacramento counties

Fresno MSA: Employment Charts and Summary



Summary:

Fresno MSA: Employment Tables (thousands)

	Current	Monthly Change		Quarterly Change		Year-to-date 2006		Year-to-date 2005	
	Level	May-06	Apr-06						
Payroll Statistics	Jun-06	Jun-06	May-06	Abs.	% AR	Abs.	% AR	Abs.	% AR
Total Non-Farm	294.4	-0.3	-1.2	-2.8	-3.7%	-0.8	-0.5%	3.1	2.2%
Total Private	225.6	-0.2	-1.3	-3.1	-5.3%	-2.4	-2.1%	3.1	2.8%
Construction	22.3	-0.1	0.0	-0.2	-3.5%	-0.3	-2.6%	1.1	11.2%
Durable Manufacturing	10.6	0.0	0.0	0.0	0.0%	0.2	3.9%	0.0	0.0%
Non-Durable Manufacturing	16.1	0.1	-0.2	-0.3	-7.1%	-0.2	-2.4%	-0.7	-8.0%
Wholesale Trade	12.5	-0.1	-0.2	-0.4	-11.8%	-0.3	-4.6%	0.0	0.0%
Retail Trade	34.1	-0.1	-0.2	-0.5	-5.7%	0.0	0.0%	0.7	4.1%
Transportation and Utilities	9.3	-0.1	-0.1	-0.3	-11.9%	-0.2	-4.2%	-0.1	-2.1%
Information	4.5	0.0	0.0	-0.1	-8.4%	0.1	4.6%	0.0	0.0%
Financial Activities	14.5	0.0	-0.1	-0.1	-2.7%	-0.1	-1.4%	0.1	1.4%
Professional Services	10.7	0.2	0.1	0.3	12.0%	0.1	1.9%	0.7	14.3%
Management Companies	2.9	0.0	0.0	0.0	0.0%	0.0	0.0%	-0.4	-22.1%
Administrative Support	15.0	-0.1	-0.1	-0.3	-7.6%	-0.1	-1.3%	0.5	7.0%
Education and Healthcare	36.9	0.2	0.0	0.1	1.1%	0.1	0.5%	0.4	2.2%
Leisure and Hospitality	25.3	0.0	-0.4	-0.7	-10.3%	-0.7	-5.3%	0.5	4.1%
Other Services	10.6	0.0	0.0	-0.1	-3.7%	-0.3	-5.4%	0.2	3.8%
Total Government	68.8	-0.1	0.1	0.3	1.8%	1.7	5.1%	0.0	0.0%
Federal Government	10.8	0.1	0.1	0.5	20.9%	1.4	32.0%	-0.4	-7.7%
State and Local Education	33.3	0.2	0.0	0.2	2.4%	0.4	2.4%	0.0	0.0%
Other State and Local	24.7	-0.3	-0.1	-0.3	-4.7%	0.0	0.0%	0.4	3.4%
Household Statistics									
Labor Force	403.9	-0.4	-1.1	-1.1	-1.1%	-4.9	-2.4%	2.6	1.3%
Household Employment	369.9	-0.4	-2.3	-4.4	-4.6%	-7.5	-3.9%	4.7	2.6%
Unemployment Rate	8.4%	0.01%	0.32%	0.84%		0.74%		-0.57%	

The Fresno MSA is made up of Fresno County only now.