

**UCLA ANDERSON FORECAST DATA RELEASE**  
**SEASONALLY ADJUSTED REGIONAL JOB DATA FOR CALIFORNIA**  
**August 2006 Released September 15, 2006**

Headline economic data announced for the U.S. economy are invariably published in seasonally adjusted form, and most of the statewide data are so adjusted as well. California is a very large economy, with many highly diverse regional economies. Unfortunately the regional data are not seasonally adjusted by state agencies. As a result, the local data are not amenable to analysis of recent short-run trends in the local economies, since in the absence of seasonal adjustment, analysts typically look at job levels and growth rates compared to those of a year earlier, in order to abstract from seasonal influences. This practice provides a relevant perspective on how regional economic growth has developed over the past year, but it says little or nothing about how regional growth has progressed in recent months.

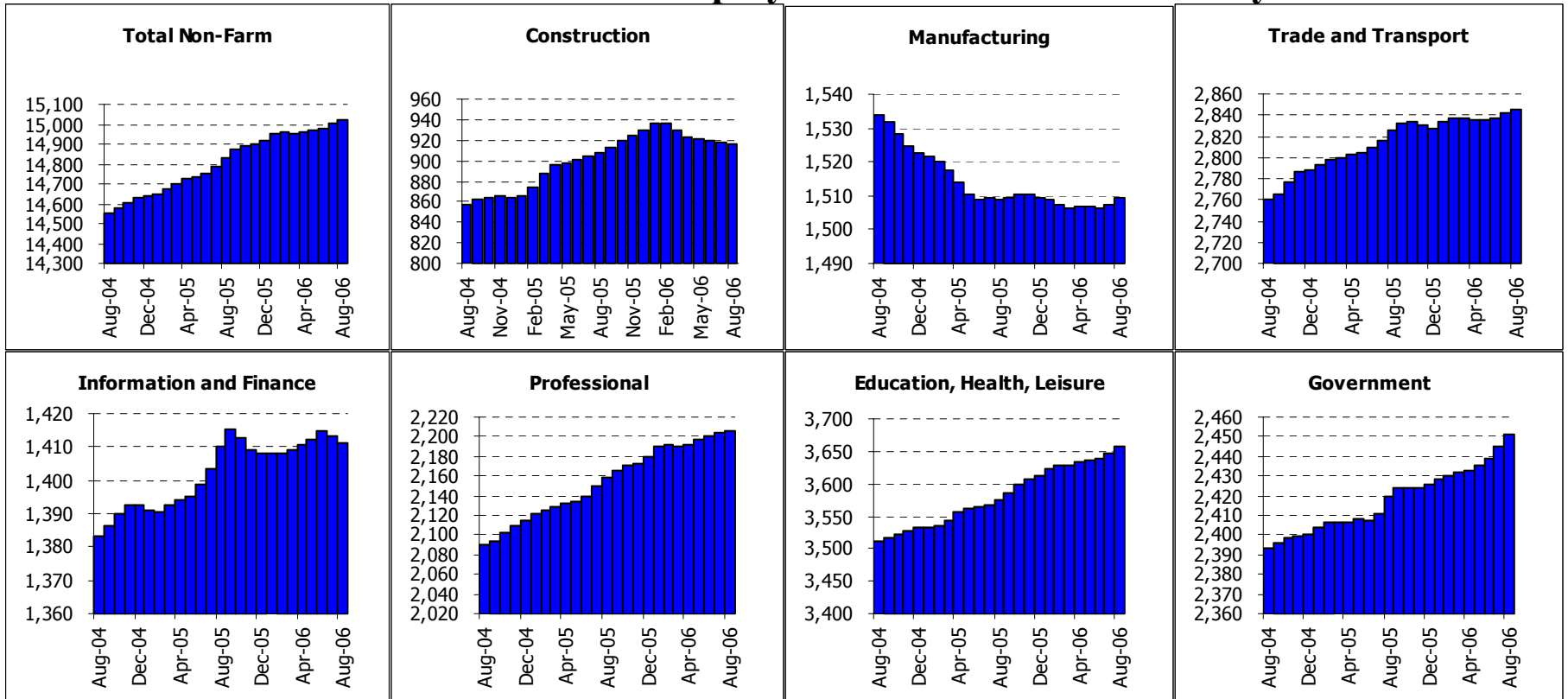
To address these deficiencies in the local data, the UCLA Anderson Forecast will publish seasonally adjusted versions of employment data for the ten major metropolitan economies within California. On the 3rd Friday of each month, when the unadjusted regional data are released by EDD, our economists will compile seasonally adjusted versions of the major components of payroll employment, aggregate employment within both the household and payroll surveys, and unemployment rates. Soon after the EDD data release we will publish a summary table of our seasonally adjusted employment data for each of the covered metropolitan regions, along with summary charts.

The ten economic regions covered at this time will be Los Angeles County, Orange County, San Diego County, the Riverside-San Bernardino (Inland Empire) economic region, Ventura County, Santa Clara County (San Jose MSA), the San Francisco-San Mateo-Marín metro region (San Francisco MSA), the Alameda-Contra Costa (Oakland MSA) region, the Sacramento-Placer-El Dorado area (Sacramento MSA) and Fresno-Madera region (Fresno MSA).

## California Overview Payroll Employment

	Current	Monthly Change		Quarterly Change		Year-to-date 2006		Year-to-date 2005	
	Level	Jul-06	Jun-06	Quarterly Change		Year-to-date 2006		Year-to-date 2005	
	Aug-06	Aug-06	Jul-06	Abs.	% AR	Abs.	% AR	Abs.	% AR
California	15023.8	20.2	22.0	56.5	1.5%	108.5	1.1%	190.0	2.0%
Los Angeles	4066.2	1.1	2.8	10.2	1.0%	27.1	1.0%	25.6	1.0%
Orange County	1512.2	3.6	1.9	6.3	1.7%	13.9	1.4%	23.2	2.4%
Riverside	1260.2	6.2	5.3	17.4	5.7%	27.5	3.4%	32.0	4.1%
San Diego	1302.1	0.9	1.3	3.9	1.2%	10.3	1.2%	14.0	1.7%
Ventura	297.3	0.7	0.5	1.6	2.2%	3.0	1.5%	4.1	2.1%
Santa Barbara	173.4	0.2	0.5	1.2	2.8%	0.8	0.7%	2.8	2.5%
Bakersfield	227.9	0.7	0.5	1.6	2.9%	3.5	2.3%	6.9	4.8%
East Bay	1057.6	-0.5	1.6	2.9	1.1%	10.8	1.6%	8.9	1.3%
San Francisco	958.9	1.6	1.4	3.8	1.6%	10.2	1.6%	7.9	1.3%
San Jose	876.5	3.3	2.3	6.4	3.0%	6.2	1.1%	5.3	0.9%
Sacramento	900.0	0.8	0.9	2.3	1.0%	5.9	1.0%	15.5	2.7%
Santa Rosa	186.8	1.1	-0.2	0.2	0.4%	-1.7	-1.3%	3.0	2.4%
Fresno	293.1	0.1	-0.4	-1.2	-1.6%	-1.9	-1.0%	3.1	1.6%

# State of California: Employment Charts and Summary



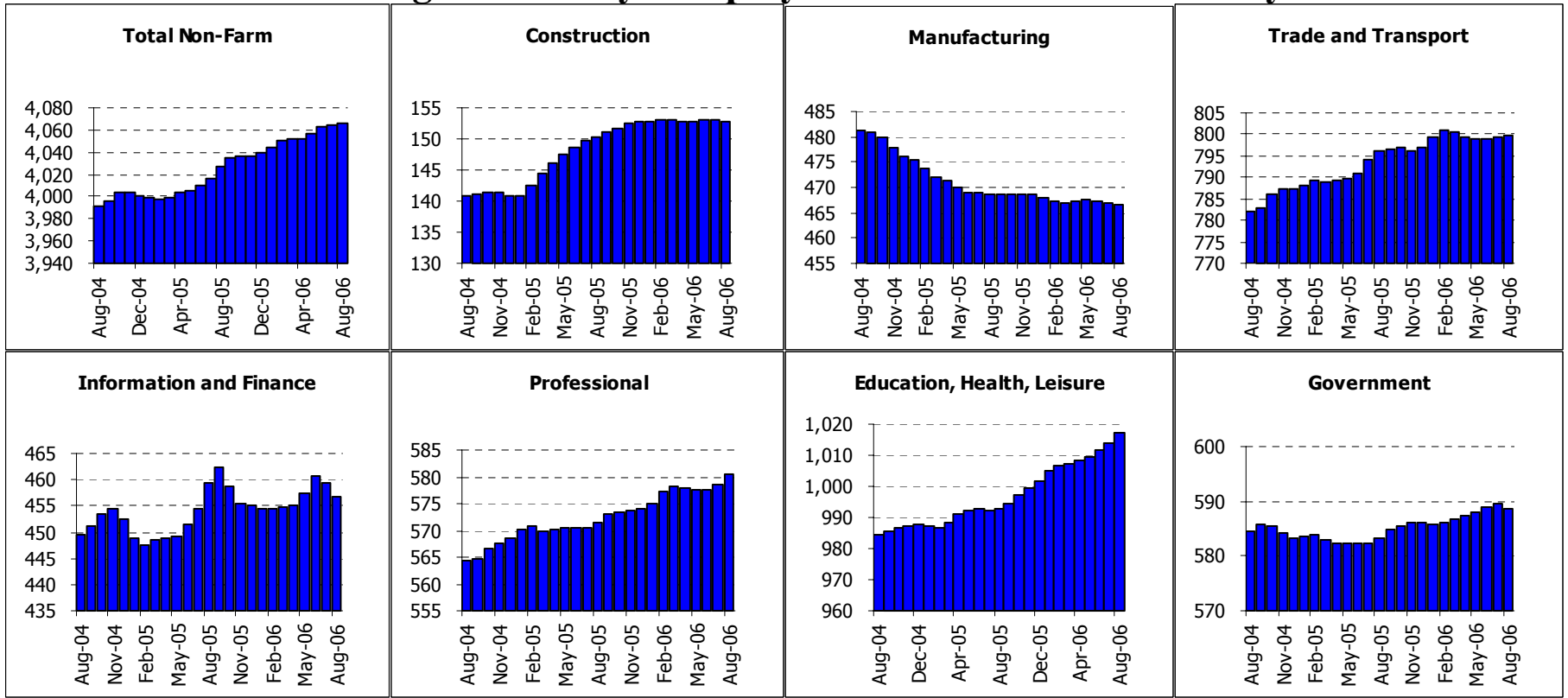
Summary:

## State of California: Employment Tables (thousands)

	Current	Monthly Change		Quarterly Change		Year-to-date 2006		Year-to-date 2005	
	Level	Jul-06	Jun-06	Abs.	% AR	Abs.	% AR	Abs.	% AR
<b>Payroll Statistics</b>	Aug-06	Aug-06	Jul-06	Abs.	% AR	Abs.	% AR	Abs.	% AR
Total Non-Farm	15023.8	20.2	22.0	56.5	1.5%	108.5	1.1%	190.0	2.0%
Total Private	12572.2	13.9	16.0	40.1	1.3%	82.7	1.0%	170.8	2.1%
Construction	916.2	-2.2	-1.4	-5.0	-2.2%	-14.0	-2.2%	43.5	7.6%
Durable Manufacturing	960.2	-0.9	-0.8	-2.9	-1.2%	-4.6	-0.7%	-7.3	-1.1%
Non-Durable Manufacturing	549.0	2.9	1.8	5.2	3.9%	4.5	1.2%	-6.0	-1.6%
Wholesale Trade	683.9	1.2	1.0	2.7	1.6%	5.0	1.1%	11.0	2.5%
Retail Trade	1667.8	1.4	3.4	6.2	1.5%	8.1	0.7%	27.0	2.5%
Transportation and Utilities	493.3	0.1	0.4	0.8	0.7%	4.5	1.4%	-1.5	-0.5%
Information	469.2	-2.4	-1.6	-1.7	-1.4%	-1.1	-0.4%	-0.3	-0.1%
Financial Activities	942.2	0.3	0.3	0.6	0.3%	4.2	0.7%	18.1	3.0%
Professional Services	985.0	2.1	2.2	6.5	2.7%	16.8	2.6%	31.0	5.0%
Management Companies	222.9	-0.1	0.1	-0.2	-0.4%	1.6	1.1%	-3.9	-2.6%
Administrative Support	998.7	1.2	1.3	3.8	1.5%	9.3	1.4%	15.6	2.5%
Education and Healthcare	1619.1	4.9	4.1	11.2	2.8%	22.2	2.1%	13.0	1.2%
Leisure and Hospitality	1516.8	4.2	3.4	8.3	2.2%	18.6	1.9%	21.6	2.2%
Other Services	522.4	1.4	1.3	3.5	2.7%	6.1	1.8%	7.1	2.1%
Total Government	2451.6	6.3	6.0	16.4	2.7%	25.8	1.6%	19.3	1.2%
Federal Government	249.0	0.1	0.3	1.0	1.6%	1.4	0.8%	-0.8	-0.5%
State and Local Education	1165.6	5.4	3.5	9.7	3.4%	9.6	1.2%	9.7	1.3%
Other State and Local	1037.0	1.0	2.1	5.9	2.3%	14.9	2.2%	10.4	1.6%
<b>Household Statistics</b>									
Labor Force	17709.7	-80.5	-11.6	-68.6	-1.5%	-71.7	-0.6%	197.6	1.7%
Household Employment	16830.9	-94.6	-4.9	-65.0	-1.5%	-62.2	-0.6%	284.4	2.6%
Unemployment Rate	5.0%	0.10%	-0.03%	0.00%		-0.03%		-0.55%	

The California EDD also releases seasonally adjusted data for California. As the EDD uses a different algorithm for this process, their numbers may differ from ours on a month to month basis.

# Los Angeles County: Employment Charts and Summary

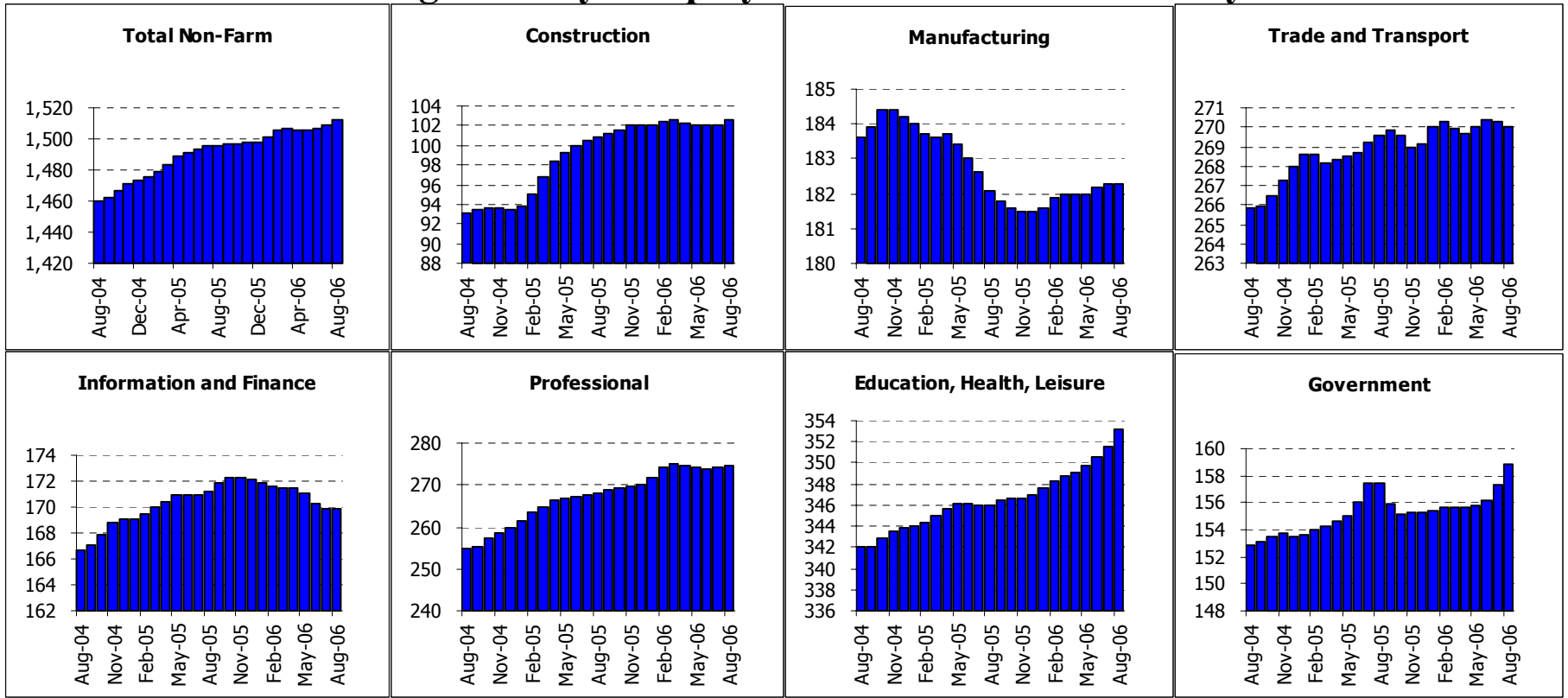


Summary:

## Los Angeles County: Employment Tables (thousands)

	Current	Monthly Change		Quarterly Change		Year-to-date 2006		Year-to-date 2005	
	Level	Jul-06	Jun-06	Abs.	% AR	Abs.	% AR	Abs.	% AR
<b>Payroll Statistics</b>	Aug-06	Aug-06	Jul-06	Abs.	% AR	Abs.	% AR	Abs.	% AR
Total Non-Farm	4066.2	1.1	2.8	10.2	1.0%	27.1	1.0%	25.6	1.0%
Total Private	3477.6	2.3	1.8	9.6	1.1%	24.6	1.1%	25.7	1.1%
Construction	152.9	-0.2	0.0	0.0	0.0%	0.0	0.0%	9.5	10.3%
Durable Manufacturing	259.5	-1.1	-0.8	-2.0	-3.0%	-1.9	-1.1%	-4.5	-2.5%
Non-Durable Manufacturing	206.8	0.6	0.8	1.1	2.2%	-0.6	-0.4%	-2.9	-2.1%
Wholesale Trade	220.6	0.3	0.1	0.5	0.9%	1.6	1.1%	2.3	1.6%
Retail Trade	415.8	0.7	0.6	1.3	1.3%	2.0	0.7%	6.6	2.4%
Transportation and Utilities	165.1	-0.1	0.3	0.5	1.2%	2.9	2.7%	-0.6	-0.6%
Information	209.4	-2.4	-1.5	-0.9	-1.7%	0.4	0.3%	3.6	2.6%
Financial Activities	247.5	0.0	0.2	0.4	0.6%	1.4	0.9%	3.3	2.1%
Professional Services	257.6	0.8	1.3	3.5	5.6%	7.1	4.3%	6.2	3.8%
Management Companies	70.2	0.0	-0.2	-0.5	-2.8%	0.3	0.6%	-0.3	-0.6%
Administrative Support	252.8	0.6	-0.1	0.0	0.0%	-0.7	-0.4%	-3.2	-1.9%
Education and Healthcare	480.3	1.9	1.9	5.3	4.5%	7.5	2.4%	-0.6	-0.2%
Leisure and Hospitality	387.3	0.9	0.2	1.4	1.5%	6.2	2.5%	3.6	1.4%
Other Services	149.5	0.3	0.3	0.8	2.2%	1.8	1.8%	1.8	1.9%
Total Government	588.6	-1.1	0.9	0.6	0.4%	2.5	0.6%	0.0	0.0%
Federal Government	53.5	0.0	0.1	0.3	2.3%	0.4	1.1%	-0.2	-0.6%
State and Local Education	296.2	-0.8	1.1	0.8	1.1%	0.7	0.4%	-1.2	-0.6%
Other State and Local	238.9	-0.3	-0.1	-0.3	-0.5%	1.6	1.0%	1.4	0.9%
<b>Household Statistics</b>									
Labor Force	4817.6	-41.3	-31.1	-84.6	-6.7%	-41.0	-1.3%	32.9	1.0%
Household Employment	4582.1	-53.6	-28.8	-82.6	-6.9%	-24.7	-0.8%	80.1	2.7%
Unemployment Rate	4.9%	0.29%	-0.02%	0.04%		-0.29%		-1.02%	

# Orange County: Employment Charts and Summary



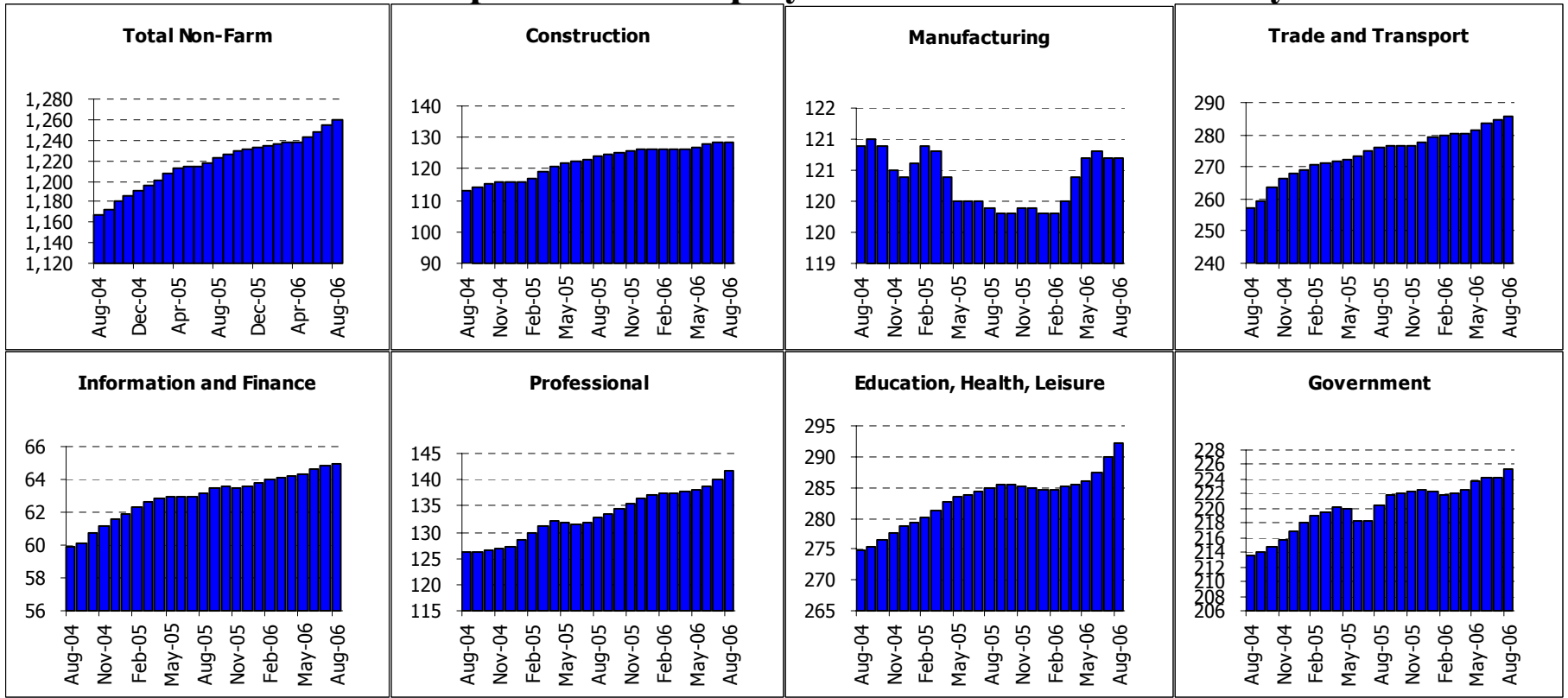
Summary:

## Orange County: Employment Tables (thousands)

	Current	Monthly Change		Quarterly Change		Year-to-date 2006		Year-to-date 2005	
	Level	Jul-06	Jun-06	Abs.	% AR	Abs.	% AR	Abs.	% AR
<b>Payroll Statistics</b>	Aug-06	Aug-06	Jul-06	Abs.	% AR	Abs.	% AR	Abs.	% AR
Total Non-Farm	1512.2	3.6	1.9	6.3	1.7%	13.9	1.4%	23.2	2.4%
Total Private	1353.3	2.1	0.7	3.2	1.0%	10.4	1.2%	19.3	2.2%
Construction	102.6	0.5	0.1	0.5	2.0%	0.5	0.7%	7.3	11.9%
Durable Manufacturing	128.6	0.1	0.1	0.3	0.9%	1.1	1.3%	-0.3	-0.4%
Non-Durable Manufacturing	53.6	0.0	0.0	0.0	0.0%	-0.3	-0.8%	-1.7	-4.5%
Wholesale Trade	83.1	0.2	0.1	0.4	1.9%	0.3	0.5%	-0.1	-0.2%
Retail Trade	158.6	-0.2	0.2	0.3	0.8%	1.9	1.8%	2.3	2.2%
Transportation and Utilities	28.9	0.0	-0.1	-0.2	-2.7%	0.0	0.0%	-0.8	-4.1%
Information	31.8	0.1	0.0	0.0	0.0%	-0.6	-2.8%	-0.8	-3.6%
Financial Activities	138.0	-0.1	-0.5	-1.3	-3.7%	-1.7	-1.8%	2.9	3.2%
Professional Services	106.3	0.1	0.3	0.9	3.5%	2.9	4.2%	3.4	5.1%
Management Companies	30.4	0.0	0.1	0.3	4.0%	0.3	1.5%	-0.8	-3.9%
Administrative Support	138.2	0.1	0.0	-0.3	-0.9%	1.6	1.8%	5.5	6.5%
Education and Healthcare	135.8	0.4	0.2	0.7	2.1%	1.3	1.5%	1.9	2.2%
Leisure and Hospitality	168.2	0.9	0.6	2.2	5.4%	4.1	3.8%	-0.6	-0.5%
Other Services	49.1	0.3	0.1	0.5	4.2%	0.7	2.2%	0.8	2.5%
Total Government	158.9	1.6	1.1	3.1	8.2%	3.6	3.5%	3.9	3.8%
Federal Government	11.6	0.1	0.0	0.2	7.2%	0.2	2.6%	0.1	1.3%
State and Local Education	94.3	1.4	0.9	2.6	11.8%	3.1	5.1%	3.1	5.2%
Other State and Local	53.0	0.2	0.2	0.4	3.1%	0.3	0.9%	0.7	2.0%
<b>Household Statistics</b>									
Labor Force	1604.4	-2.8	0.8	1.7	0.4%	-0.8	-0.1%	21.0	2.0%
Household Employment	1548.9	-2.8	0.9	1.5	0.4%	0.6	0.1%	24.7	2.4%
Unemployment Rate	3.5%	0.01%	-0.01%	0.01%		-0.09%		-0.28%	



# Inland Empire MSA: Employment Charts and Summary



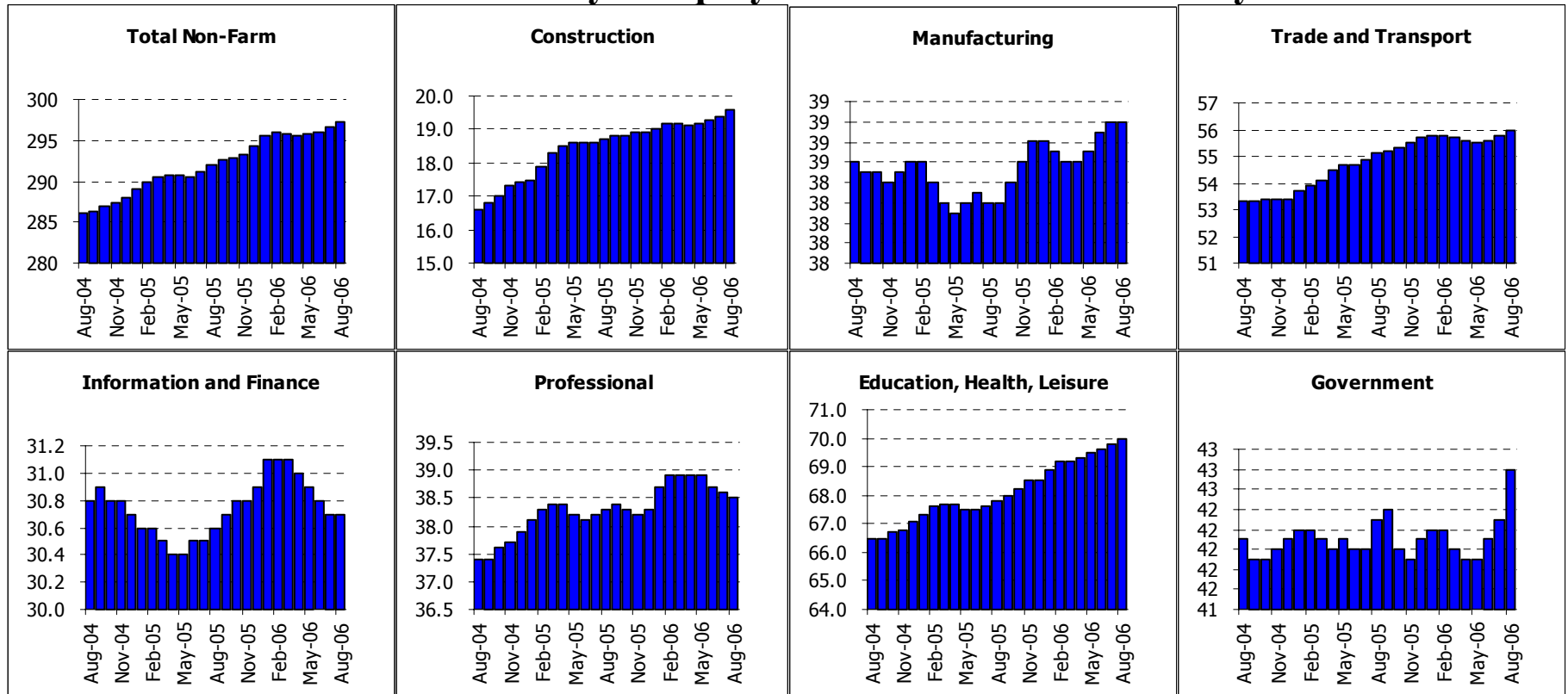
Summary:

## Inland Empire MSA: Employment Tables (thousands)

	Current	Monthly Change		Quarterly Change		Year-to-date 2006		Year-to-date 2005	
	Level	Jul-06	Jun-06	Abs.	% AR	Abs.	% AR	Abs.	% AR
<b>Payroll Statistics</b>	Aug-06	Aug-06	Jul-06	Abs.	% AR	Abs.	% AR	Abs.	% AR
Total Non-Farm	1260.2	6.2	5.3	17.4	5.7%	27.5	3.4%	32.0	4.1%
Total Private	1034.9	5.0	5.4	15.8	6.3%	24.9	3.7%	28.6	4.4%
Construction	128.3	0.1	0.5	1.6	5.1%	2.1	2.5%	7.9	10.4%
Durable Manufacturing	86.2	0.0	0.0	0.0	0.0%	0.7	1.2%	-0.6	-1.0%
Non-Durable Manufacturing	34.4	0.0	0.0	-0.1	-1.2%	0.0	0.0%	0.2	0.9%
Wholesale Trade	51.1	0.1	-0.1	0.1	0.8%	1.0	3.0%	1.0	3.1%
Retail Trade	171.5	0.7	1.0	2.7	6.6%	5.2	4.7%	5.3	5.0%
Transportation and Utilities	64.0	0.5	0.8	2.0	13.5%	3.5	8.8%	1.4	3.6%
Information	14.7	0.1	0.1	0.3	8.6%	0.4	4.2%	0.0	0.0%
Financial Activities	50.3	0.1	0.1	0.4	3.2%	1.0	3.1%	1.6	5.1%
Professional Services	36.7	0.3	0.2	0.9	10.4%	1.5	6.5%	2.4	11.4%
Management Companies	13.1	0.1	0.0	0.1	3.1%	0.5	6.0%	0.7	8.9%
Administrative Support	91.8	1.0	1.0	2.7	12.7%	3.2	5.5%	2.2	4.0%
Education and Healthcare	122.7	0.9	1.0	2.3	7.9%	2.2	2.8%	1.4	1.8%
Leisure and Hospitality	126.8	1.1	1.1	2.9	9.7%	4.1	5.1%	3.6	4.5%
Other Services	42.6	0.2	0.3	0.9	8.9%	1.0	3.6%	1.2	4.5%
Total Government	225.3	1.2	-0.1	1.6	2.9%	2.7	1.8%	3.4	2.4%
Federal Government	18.6	0.0	0.0	0.0	0.0%	-0.1	-0.8%	1.0	8.5%
State and Local Education	110.0	1.2	-0.5	0.9	3.3%	0.0	0.0%	-1.5	-2.1%
Other State and Local	96.7	0.2	0.2	0.9	3.8%	2.9	4.7%	4.1	6.9%
<b>Household Statistics</b>									
Labor Force	1740.4	-0.6	10.5	20.2	4.8%	16.4	1.4%	38.3	3.4%
Household Employment	1660.4	-0.6	11.0	20.3	5.0%	16.8	1.5%	44.0	4.2%
Unemployment Rate	4.6%	0.00%	-0.06%	-0.06%		-0.07%		-0.45%	

The Inland Empire is made up of Riverside and San Bernardino counties

# Ventura County: Employment Charts and Summary

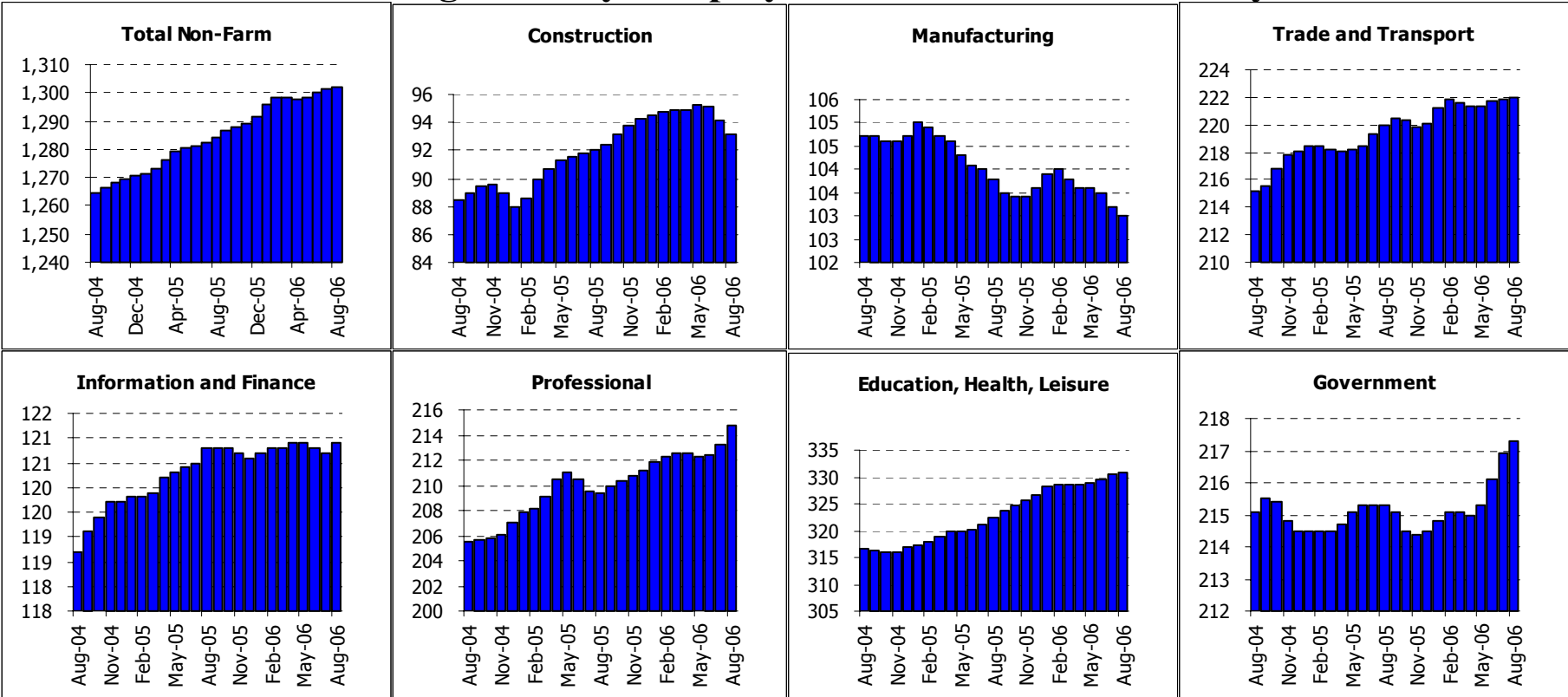


Summary:

## Ventura County: Employment Tables (thousands)

	Current	Monthly Change		Quarterly Change		Year-to-date 2006		Year-to-date 2005	
	Level	Jul-06	Jun-06	Abs.	% AR	Abs.	% AR	Abs.	% AR
<b>Payroll Statistics</b>	Aug-06	Aug-06	Jul-06	Abs.	% AR	Abs.	% AR	Abs.	% AR
Total Non-Farm	297.3	0.7	0.5	1.6	2.2%	3.0	1.5%	4.1	2.1%
Total Private	254.5	0.3	0.2	0.7	1.1%	2.4	1.4%	3.8	2.3%
Construction	19.6	0.2	0.1	0.4	8.6%	0.7	5.6%	1.3	11.4%
Durable Manufacturing	24.2	0.0	0.0	0.0	0.0%	-0.3	-1.8%	0.1	0.6%
Non-Durable Manufacturing	14.8	0.1	0.1	0.3	8.5%	0.6	6.4%	-0.3	-3.2%
Wholesale Trade	12.9	0.1	0.0	0.2	6.4%	0.2	2.4%	0.0	0.0%
Retail Trade	37.2	0.2	0.1	0.3	3.3%	0.3	1.2%	1.4	6.0%
Transportation and Utilities	6.0	0.1	0.0	0.1	7.0%	0.1	2.6%	0.1	2.6%
Information	6.1	0.0	0.0	0.0	0.0%	0.0	0.0%	-0.2	-4.7%
Financial Activities	24.6	0.0	-0.1	-0.2	-3.2%	-0.2	-1.2%	0.1	0.6%
Professional Services	15.5	0.0	0.0	0.0	0.0%	0.5	5.0%	0.5	5.2%
Management Companies	3.6	0.0	0.0	0.0	0.0%	0.0	0.0%	-0.1	-4.1%
Administrative Support	19.4	-0.1	-0.1	-0.3	-6.0%	-0.2	-1.5%	0.0	0.0%
Education and Healthcare	29.5	0.2	0.1	0.4	5.6%	0.4	2.1%	0.8	4.3%
Leisure and Hospitality	29.9	0.0	0.0	0.0	0.0%	0.9	4.7%	-0.2	-1.0%
Other Services	10.6	0.0	0.1	0.1	3.9%	0.2	2.9%	0.1	1.4%
Total Government	42.8	0.5	0.2	0.9	8.9%	0.7	2.5%	0.2	0.7%
Federal Government	7.3	0.0	0.1	0.1	5.7%	0.0	0.0%	-0.1	-2.0%
State and Local Education	18.4	0.1	0.1	0.2	4.5%	0.1	0.8%	-0.5	-3.9%
Other State and Local	17.1	0.4	0.2	0.6	15.4%	0.6	5.5%	0.3	2.8%
<b>Household Statistics</b>									
Labor Force	422.4	0.0	0.5	1.0	1.0%	0.1	0.0%	6.3	2.3%
Household Employment	404.2	0.1	0.8	1.5	1.5%	0.0	0.0%	7.8	3.0%
Unemployment Rate	4.3%	-0.02%	-0.08%	-0.13%		0.02%		-0.43%	

# San Diego County: Employment Charts and Summary

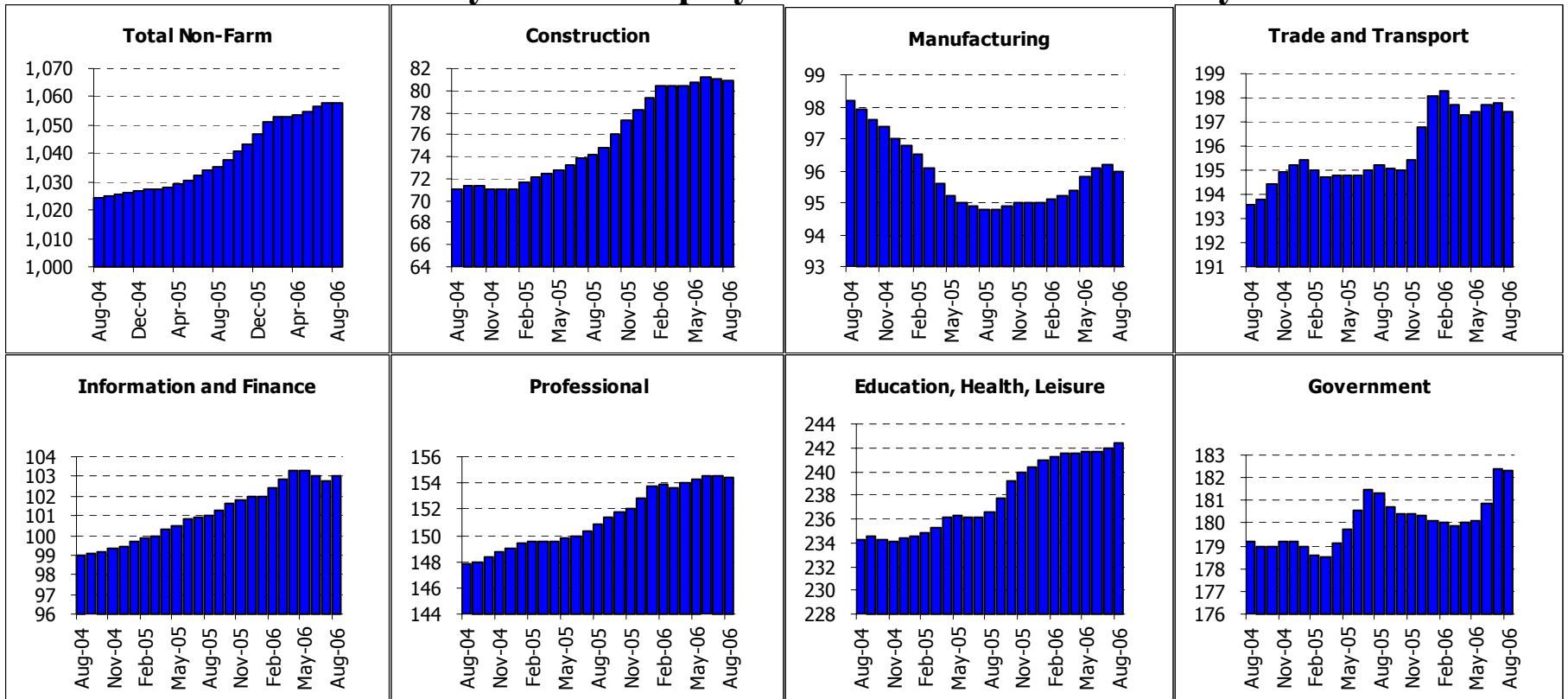


Summary:

## San Diego County: Employment Tables (thousands)

	Current	Monthly Change		Quarterly Change		Year-to-date 2006		Year-to-date 2005	
	Level	Jul-06	Jun-06	Abs.	% AR	Abs.	% AR	Abs.	% AR
<b>Payroll Statistics</b>	Aug-06	Aug-06	Jul-06	Abs.	% AR	Abs.	% AR	Abs.	% AR
Total Non-Farm	1302.1	0.9	1.3	3.9	1.2%	10.3	1.2%	14.0	1.7%
Total Private	1084.8	0.5	0.6	2.0	0.7%	7.5	1.0%	13.3	1.9%
Construction	93.1	-1.1	-0.9	-2.1	-8.5%	-1.2	-1.9%	3.0	5.1%
Durable Manufacturing	77.8	-0.3	-0.2	-0.5	-2.5%	-0.3	-0.6%	-0.8	-1.5%
Non-Durable Manufacturing	25.1	0.1	0.0	0.0	0.0%	-0.4	-2.3%	-0.1	-0.6%
Wholesale Trade	45.4	0.1	0.0	0.1	0.9%	0.6	2.0%	1.6	5.7%
Retail Trade	148.0	0.0	0.3	0.5	1.4%	1.9	2.0%	0.5	0.5%
Transportation and Utilities	29.1	0.2	0.1	0.4	5.7%	0.5	2.6%	-0.4	-2.1%
Information	37.0	0.0	-0.1	-0.1	-1.1%	0.1	0.4%	0.1	0.4%
Financial Activities	83.9	0.2	0.0	0.1	0.5%	0.2	0.4%	1.0	1.8%
Professional Services	107.5	0.5	0.5	1.3	5.0%	1.8	2.6%	4.2	6.3%
Management Companies	18.0	0.1	0.0	0.1	2.3%	0.3	2.6%	-0.1	-0.9%
Administrative Support	89.3	0.6	0.5	1.2	5.6%	1.5	2.6%	-1.7	-2.9%
Education and Healthcare	126.3	0.3	0.5	1.2	3.9%	2.0	2.4%	1.5	1.9%
Leisure and Hospitality	155.1	0.0	0.2	0.4	1.0%	1.5	1.5%	4.4	4.5%
Other Services	49.3	0.0	0.1	0.3	2.5%	0.5	1.5%	-0.2	-0.6%
Total Government	217.3	0.4	0.8	2.0	3.8%	2.8	2.0%	0.8	0.6%
Federal Government	39.3	0.1	0.0	0.2	2.1%	0.3	1.2%	-0.3	-1.1%
State and Local Education	99.5	0.4	0.4	1.1	4.5%	1.4	2.1%	1.1	1.7%
Other State and Local	78.5	0.1	0.3	0.8	4.2%	1.2	2.3%	-0.2	-0.4%
<b>Household Statistics</b>									
Labor Force	1507.2	-5.6	0.7	-0.1	0.0%	-3.1	-0.3%	16.9	1.7%
Household Employment	1447.3	-5.7	0.4	-1.2	-0.3%	-1.8	-0.2%	19.9	2.1%
Unemployment Rate	4.0%	0.02%	0.02%	0.07%		-0.08%		-0.25%	

# East Bay MSA: Employment Charts and Summary



Summary:

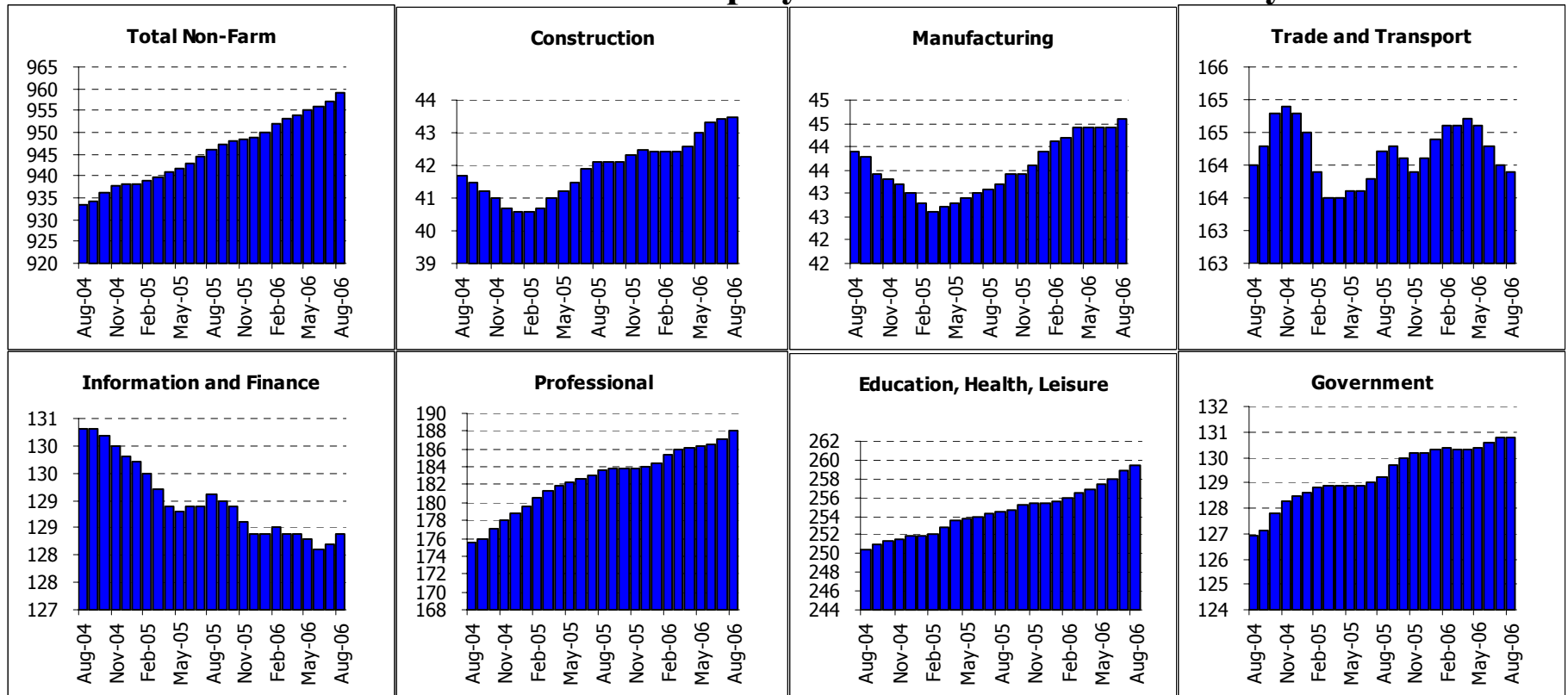
## East Bay MSA: Employment Tables (thousands)

	Current	Monthly Change		Quarterly Change		Year-to-date 2006		Year-to-date 2005	
	Level	Jul-06	Jun-06	Abs.	% AR	Abs.	% AR	Abs.	% AR
<b>Payroll Statistics</b>	Aug-06	Aug-06	Jul-06	Abs.	% AR	Abs.	% AR	Abs.	% AR
Total Non-Farm	1057.6	-0.5	1.6	2.9	1.1%	10.8	1.6%	8.9	1.3%
Total Private	875.3	-0.4	0.1	0.7	0.3%	8.8	1.5%	6.7	1.2%
Construction	80.9	-0.2	-0.1	0.1	0.5%	2.6	5.0%	3.2	6.8%
Durable Manufacturing	60.1	-0.2	0.0	0.0	0.0%	0.4	1.0%	-1.4	-3.4%
Non-Durable Manufacturing	35.8	0.1	0.0	0.3	3.4%	0.6	2.6%	-0.9	-3.8%
Wholesale Trade	48.4	0.0	0.0	0.0	0.0%	0.2	0.6%	-1.3	-3.9%
Retail Trade	115.0	-0.1	0.2	0.3	1.1%	1.3	1.7%	1.1	1.5%
Transportation and Utilities	34.5	-0.1	0.1	0.1	1.2%	0.1	0.4%	-0.2	-0.9%
Information	29.5	0.0	-0.1	-0.3	-4.0%	-0.3	-1.5%	-0.5	-2.4%
Financial Activities	73.5	0.2	-0.1	0.0	0.0%	1.3	2.7%	2.1	4.6%
Professional Services	72.9	0.1	0.0	0.2	1.1%	0.4	0.8%	1.0	2.1%
Management Companies	22.1	0.0	0.0	0.1	1.8%	0.9	6.4%	-0.7	-4.7%
Administrative Support	59.4	-0.3	0.0	-0.1	-0.7%	0.4	1.0%	1.4	3.8%
Education and Healthcare	122.3	0.3	0.5	1.1	3.7%	2.0	2.5%	1.4	1.8%
Leisure and Hospitality	84.6	0.1	-0.2	-0.4	-1.9%	0.5	0.9%	0.8	1.5%
Other Services	35.5	0.0	0.0	0.0	0.0%	-0.4	-1.7%	0.0	0.0%
Total Government	182.3	-0.1	1.5	2.2	5.0%	2.0	1.7%	2.1	1.8%
Federal Government	17.4	0.0	0.1	0.1	2.3%	0.0	0.0%	0.2	1.7%
State and Local Education	87.4	-0.1	1.1	1.6	7.7%	2.0	3.5%	2.0	3.6%
Other State and Local	77.5	0.1	0.3	0.6	3.2%	0.2	0.4%	0.0	0.0%
<b>Household Statistics</b>									
Labor Force	1264.7	-5.4	1.0	-1.7	-0.5%	-1.8	-0.2%	7.3	0.9%
Household Employment	1209.6	-5.5	1.3	-1.0	-0.3%	1.8	0.2%	12.6	1.6%
Unemployment Rate	4.4%	0.03%	-0.03%	-0.05%		-0.28%		-0.45%	

East Bay is also known as the Oakland MSA. It is made up of Alameda and Contra Costa counties.



# San Francisco MSA: Employment Charts and Summary



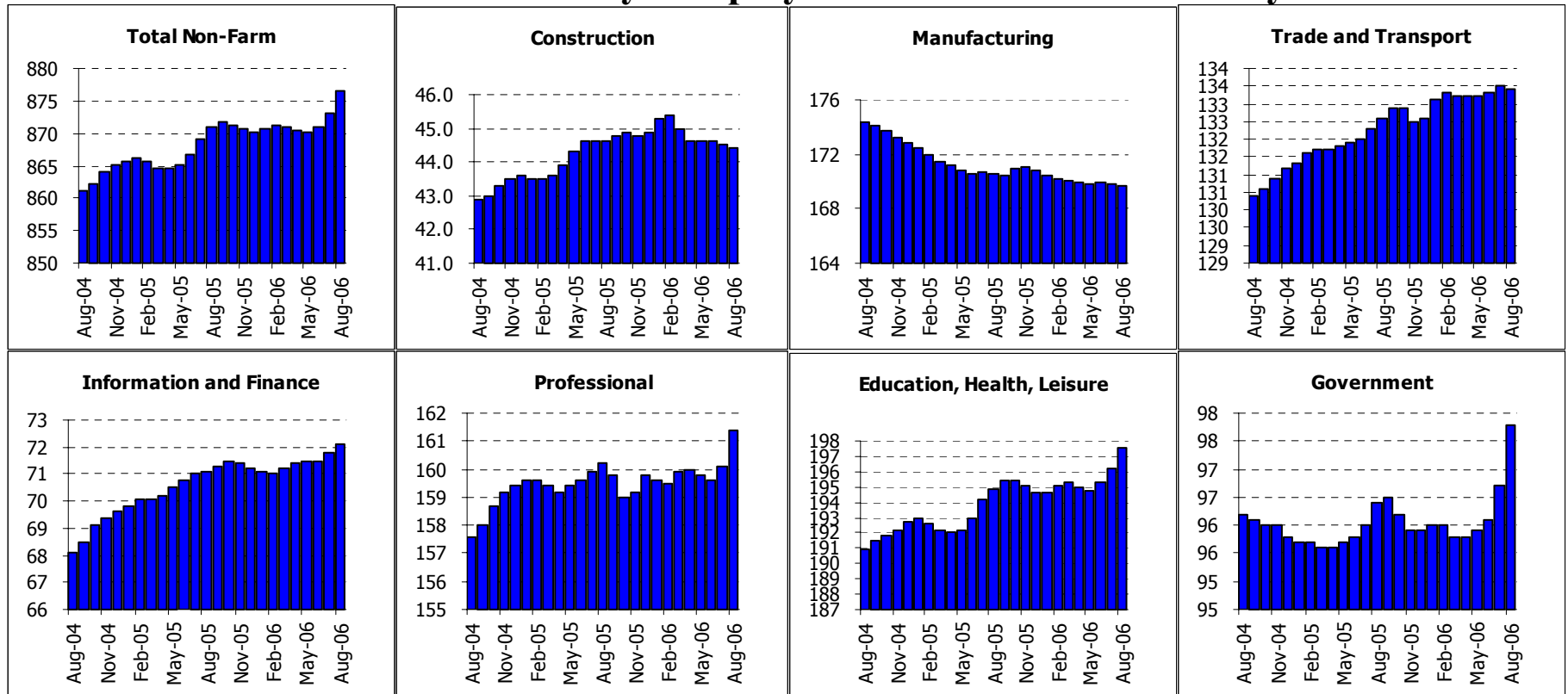
Summary:

## San Francisco MSA: Employment Tables (thousands)

	Current	Monthly Change		Quarterly Change		Year-to-date 2006		Year-to-date 2005	
	Level	Jul-06	Jun-06	Abs.	% AR	Abs.	% AR	Abs.	% AR
<b>Payroll Statistics</b>	Aug-06	Aug-06	Jul-06	Abs.	% AR	Abs.	% AR	Abs.	% AR
Total Non-Farm	958.9	1.6	1.4	3.8	1.6%	10.2	1.6%	7.9	1.3%
Total Private	828.1	1.7	1.1	3.5	1.7%	9.7	1.8%	7.1	1.3%
Construction	43.5	0.1	0.1	0.5	4.7%	1.0	3.6%	1.4	5.2%
Durable Manufacturing	21.3	0.0	0.0	-0.1	-1.9%	0.2	1.4%	-0.3	-2.1%
Non-Durable Manufacturing	23.3	0.2	0.1	0.3	5.3%	0.9	6.1%	0.2	1.4%
Wholesale Trade	26.5	0.0	-0.1	-0.2	-3.0%	0.0	0.0%	0.0	0.0%
Retail Trade	95.3	-0.1	0.1	0.2	0.8%	1.0	1.6%	0.5	0.8%
Transportation and Utilities	42.5	0.2	-0.2	-0.4	-3.7%	-0.4	-1.4%	-1.3	-4.3%
Information	39.3	0.1	-0.1	-0.3	-3.0%	-0.9	-3.3%	-1.7	-5.9%
Financial Activities	89.1	0.1	0.2	0.4	1.8%	0.9	1.5%	1.0	1.7%
Professional Services	110.5	0.4	0.4	1.1	4.1%	2.8	3.9%	3.6	5.2%
Management Companies	19.8	0.0	0.1	0.0	0.0%	-0.2	-1.5%	-0.6	-4.3%
Administrative Support	57.9	0.3	0.3	0.8	5.7%	1.7	4.6%	1.8	5.1%
Education and Healthcare	102.8	0.2	0.6	1.2	4.8%	1.3	1.9%	1.1	1.7%
Leisure and Hospitality	118.4	0.3	0.0	0.3	1.0%	1.9	2.5%	1.0	1.3%
Other Services	38.2	0.1	0.2	0.5	5.4%	0.8	3.2%	0.4	1.6%
Total Government	130.8	0.0	0.2	0.4	1.2%	0.6	0.7%	0.7	0.8%
Federal Government	20.5	0.1	0.1	0.3	6.1%	0.1	0.7%	-0.4	-2.9%
State and Local Education	48.5	-0.2	-0.2	-0.6	-4.8%	-0.6	-1.8%	0.3	0.9%
Other State and Local	61.8	0.3	0.2	0.8	5.4%	1.2	3.0%	0.8	2.0%
<b>Household Statistics</b>									
Labor Force	912.9	-3.2	1.0	0.1	0.0%	-1.2	-0.2%	4.3	0.7%
Household Employment	876.8	-3.0	1.1	0.4	0.2%	2.0	0.3%	8.8	1.5%
Unemployment Rate	4.0%	-0.01%	-0.02%	-0.03%		-0.34%		-0.51%	

The San Francisco MSA includes Marin, San Francisco and San Mateo counties

# Santa Clara County: Employment Charts and Summary



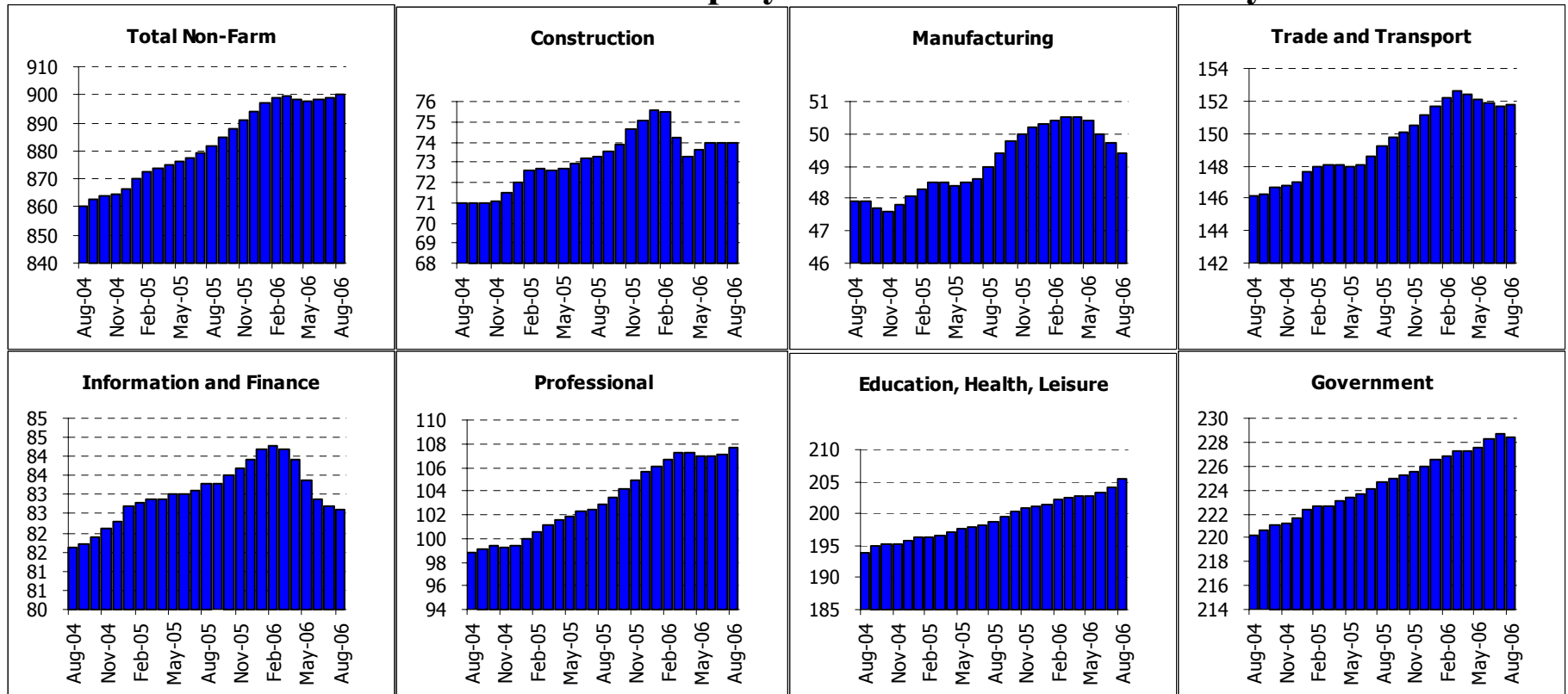
Summary:

## Santa Clara County: Employment Tables (thousands)

	Current	Monthly Change		Quarterly Change		Year-to-date 2006		Year-to-date 2005	
	Level	Jul-06	Jun-06	Abs.	% AR	Abs.	% AR	Abs.	% AR
<b>Payroll Statistics</b>	Aug-06	Aug-06	Jul-06	Abs.	% AR	Abs.	% AR	Abs.	% AR
Total Non-Farm	876.5	3.3	2.3	6.4	3.0%	6.2	1.1%	5.3	0.9%
Total Private	778.7	2.2	1.8	4.6	2.4%	4.3	0.8%	4.7	0.9%
Construction	44.4	-0.1	-0.1	-0.2	-1.8%	-0.5	-1.7%	1.0	3.5%
Durable Manufacturing	157.5	-0.1	0.2	0.2	0.5%	-0.7	-0.7%	-2.7	-2.5%
Non-Durable Manufacturing	12.1	0.0	-0.2	-0.3	-9.3%	-0.5	-5.9%	0.5	6.5%
Wholesale Trade	37.3	0.2	0.1	0.4	4.4%	0.9	3.7%	0.6	2.6%
Retail Trade	83.8	-0.1	0.1	0.2	1.0%	1.0	1.8%	0.6	1.1%
Transportation and Utilities	12.6	0.0	0.0	-0.1	-3.1%	-0.5	-5.7%	-0.1	-1.1%
Information	35.9	0.3	0.3	0.6	7.0%	0.9	3.9%	1.3	5.8%
Financial Activities	36.2	0.0	0.0	0.0	0.0%	0.0	0.0%	0.2	0.8%
Professional Services	101.8	0.4	0.3	0.8	3.2%	1.9	2.9%	1.6	2.5%
Management Companies	8.2	0.1	0.0	0.1	5.0%	0.2	3.8%	-0.2	-3.5%
Administrative Support	51.4	0.7	0.2	0.8	6.5%	-0.5	-1.4%	-0.7	-2.0%
Education and Healthcare	97.9	0.7	0.5	1.4	5.9%	1.1	1.7%	1.2	1.9%
Leisure and Hospitality	74.4	0.4	0.3	0.8	4.4%	1.6	3.3%	0.9	1.9%
Other Services	25.2	0.2	0.1	0.5	8.3%	0.2	1.2%	0.1	0.6%
Total Government	97.8	1.1	0.6	1.9	8.2%	1.9	3.0%	0.6	0.9%
Federal Government	11.0	0.0	0.0	0.0	0.0%	-0.1	-1.3%	-0.2	-2.6%
State and Local Education	47.8	1.1	0.6	1.7	15.6%	1.8	5.9%	0.9	3.0%
Other State and Local	39.0	0.1	0.0	0.2	2.1%	0.4	1.6%	0.0	0.0%
<b>Household Statistics</b>									
Labor Force	842.6	0.0	1.6	2.5	1.2%	-4.1	-0.7%	3.4	0.6%
Household Employment	802.7	-0.4	1.4	2.1	1.1%	-0.8	-0.1%	8.8	1.7%
Unemployment Rate	4.7%	0.05%	0.01%	0.03%		-0.37%		-0.66%	

The San Jose MSA is Santa Clara and San Benito counties.

# Sacramento MSA: Employment Charts and Summary



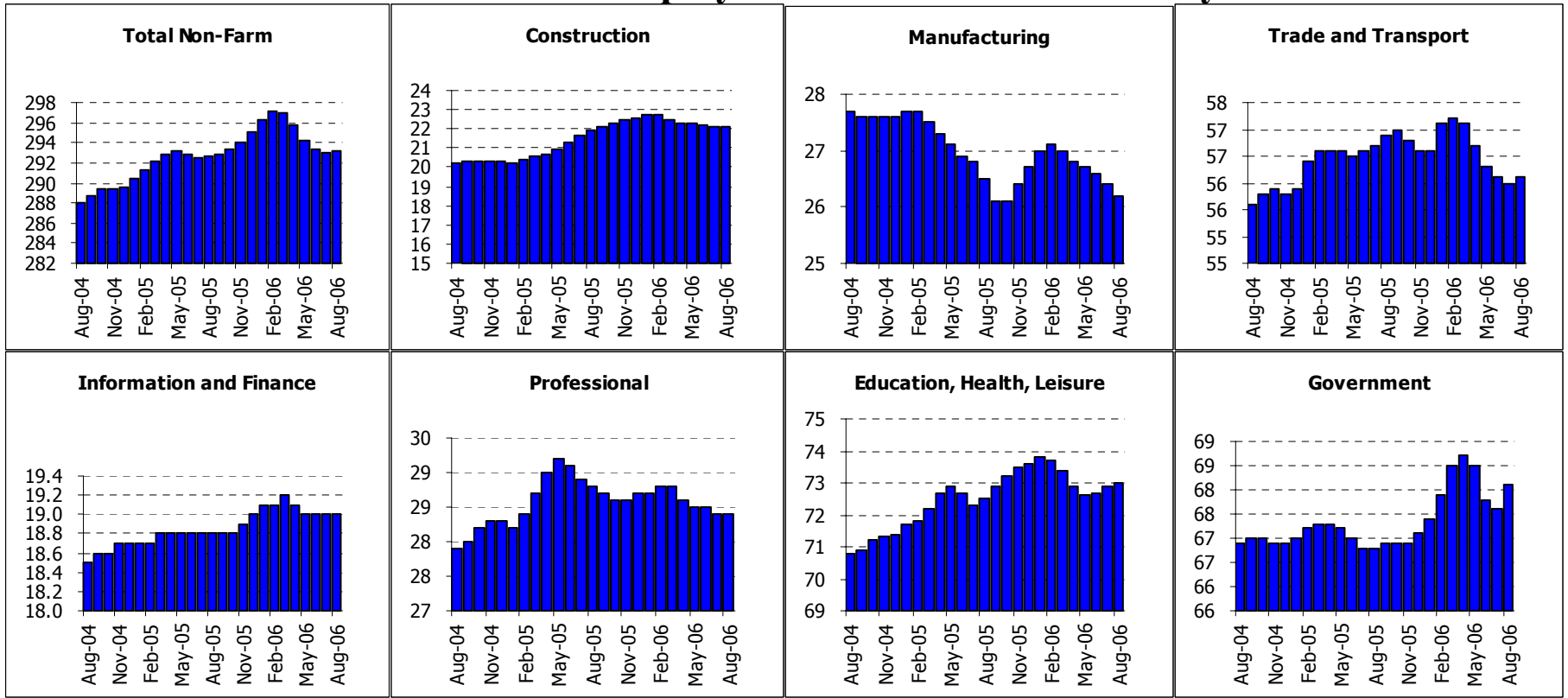
Summary:

## Sacramento MSA: Employment Tables (thousands)

	Current	Monthly Change		Quarterly Change		Year-to-date 2006		Year-to-date 2005	
	Level	Jul-06	Jun-06	Abs.	% AR	Abs.	% AR	Abs.	% AR
<b>Payroll Statistics</b>	Aug-06	Aug-06	Jul-06	Abs.	% AR	Abs.	% AR	Abs.	% AR
Total Non-Farm	900.0	0.8	0.9	2.3	1.0%	5.9	1.0%	15.5	2.7%
Total Private	671.6	1.2	0.4	1.4	0.8%	3.6	0.8%	12.4	2.9%
Construction	74.0	0.0	0.0	0.4	2.2%	-1.1	-2.2%	1.8	3.8%
Durable Manufacturing	36.1	0.0	-0.2	-0.4	-4.3%	-0.2	-0.8%	1.1	4.8%
Non-Durable Manufacturing	13.3	-0.2	-0.1	-0.5	-13.7%	-0.6	-6.4%	0.2	2.3%
Wholesale Trade	27.4	0.0	0.0	0.0	0.0%	0.3	1.7%	0.3	1.7%
Retail Trade	101.0	0.1	0.0	-0.1	-0.4%	1.0	1.5%	1.6	2.5%
Transportation and Utilities	23.7	0.1	0.0	0.1	1.7%	0.0	0.0%	0.2	1.3%
Information	19.2	0.1	0.1	0.0	0.0%	-0.4	-3.0%	-0.8	-5.8%
Financial Activities	63.4	-0.2	-0.3	-0.8	-4.9%	-0.9	-2.1%	1.8	4.4%
Professional Services	47.1	0.2	0.2	0.6	5.3%	1.0	3.3%	1.8	6.2%
Management Companies	9.3	0.0	0.1	0.2	9.1%	0.1	1.6%	-0.2	-3.2%
Administrative Support	51.3	0.2	0.1	0.1	0.8%	1.0	3.0%	1.8	5.9%
Education and Healthcare	89.2	0.6	0.3	1.2	5.6%	1.2	2.1%	1.5	2.6%
Leisure and Hospitality	87.5	0.5	0.4	1.2	5.7%	3.3	5.9%	1.6	3.0%
Other Services	28.7	0.1	0.1	0.2	2.8%	-0.3	-1.5%	-0.1	-0.5%
Total Government	228.4	-0.3	0.4	0.9	1.6%	2.4	1.6%	3.0	2.0%
Federal Government	12.8	0.1	0.0	0.2	6.5%	0.1	1.2%	0.3	3.6%
State and Local Education	90.4	-0.7	0.1	-0.1	-0.4%	0.0	0.0%	1.0	1.7%
Other State and Local	125.2	0.3	0.4	0.9	2.9%	2.3	2.8%	1.7	2.1%
<b>Household Statistics</b>									
Labor Force	1029.8	-3.7	0.6	-1.7	-0.7%	-1.9	-0.3%	16.3	2.4%
Household Employment	983.8	-3.5	1.0	-0.4	-0.2%	-2.5	-0.4%	19.8	3.1%
Unemployment Rate	4.5%	0.00%	-0.04%	-0.12%		0.07%		-0.42%	

The Sacramento MSA is made up of El Dorado, Placer, Yolo & Sacramento counties

# Fresno MSA: Employment Charts and Summary



Summary:

## Fresno MSA: Employment Tables (thousands)

	Current	Monthly Change		Quarterly Change		Year-to-date 2006		Year-to-date 2005	
	Level	Jul-06	Jun-06	Abs.	% AR	Abs.	% AR	Abs.	% AR
<b>Payroll Statistics</b>	Aug-06	Aug-06	Jul-06	Abs.	% AR	Abs.	% AR	Abs.	% AR
Total Non-Farm	293.1	0.1	-0.4	-1.2	-1.6%	-1.9	-1.0%	3.1	1.6%
Total Private	225.0	-0.3	-0.3	-0.8	-1.4%	-2.8	-1.8%	3.1	2.1%
Construction	22.1	0.0	-0.1	-0.2	-3.5%	-0.5	-3.3%	1.6	12.1%
Durable Manufacturing	10.6	0.0	0.0	0.0	0.0%	0.2	2.9%	0.0	0.0%
Non-Durable Manufacturing	15.6	-0.1	-0.2	-0.4	-9.6%	-0.7	-6.4%	-1.1	-9.4%
Wholesale Trade	12.6	0.1	0.0	0.0	0.0%	-0.2	-2.3%	0.3	3.7%
Retail Trade	34.2	0.0	0.0	-0.1	-1.2%	0.1	0.4%	0.9	4.0%
Transportation and Utilities	9.4	0.1	0.0	0.0	0.0%	-0.1	-1.6%	-0.1	-1.6%
Information	4.5	0.0	0.0	0.0	0.0%	0.1	3.4%	0.0	0.0%
Financial Activities	14.5	0.0	0.0	0.0	0.0%	-0.1	-1.0%	0.1	1.1%
Professional Services	10.6	0.0	0.0	0.1	3.9%	0.0	0.0%	0.7	10.6%
Management Companies	2.9	0.0	0.0	0.0	0.0%	0.0	0.0%	-0.5	-21.2%
Administrative Support	14.9	0.0	-0.1	-0.2	-5.2%	-0.3	-2.9%	0.4	4.1%
Education and Healthcare	37.0	0.1	0.1	0.3	3.3%	0.2	0.8%	0.5	2.1%
Leisure and Hospitality	25.3	0.0	0.1	0.0	0.0%	-0.6	-3.5%	0.4	2.4%
Other Services	10.7	0.0	0.0	0.1	3.8%	-0.2	-2.7%	0.2	2.9%
Total Government	68.1	0.5	-0.2	-0.4	-2.3%	1.0	2.2%	-0.1	-0.2%
Federal Government	9.9	0.1	-0.4	-0.7	-23.9%	0.5	8.1%	-0.6	-8.7%
State and Local Education	33.1	0.4	0.1	0.3	3.7%	0.2	0.9%	0.0	0.0%
Other State and Local	25.1	0.2	0.0	0.1	1.6%	0.4	2.4%	0.6	3.8%
<b>Household Statistics</b>									
Labor Force	398.9	-4.1	-1.0	-5.4	-5.2%	-10.1	-3.7%	2.5	0.9%
Household Employment	365.7	-3.4	-0.7	-4.5	-4.8%	-11.6	-4.6%	3.0	1.2%
Unemployment Rate	8.3%	-0.09%	-0.05%	-0.11%		0.57%		-0.18%	

The Fresno MSA is made up of Fresno County only now.