

UCLA ANDERSON FORECAST DATA RELEASE
SEASONALLY ADJUSTED REGIONAL JOB DATA FOR CALIFORNIA
September 2006 Released October 20, 2006

Headline economic data announced for the U.S. economy are invariably published in seasonally adjusted form, and most of the statewide data are so adjusted as well. California is a very large economy, with many highly diverse regional economies. Unfortunately the regional data are not seasonally adjusted by state agencies. As a result, the local data are not amenable to analysis of recent short-run trends in the local economies, since in the absence of seasonal adjustment, analysts typically look at job levels and growth rates compared to those of a year earlier, in order to abstract from seasonal influences. This practice provides a relevant perspective on how regional economic growth has developed over the past year, but it says little or nothing about how regional growth has progressed in recent months.

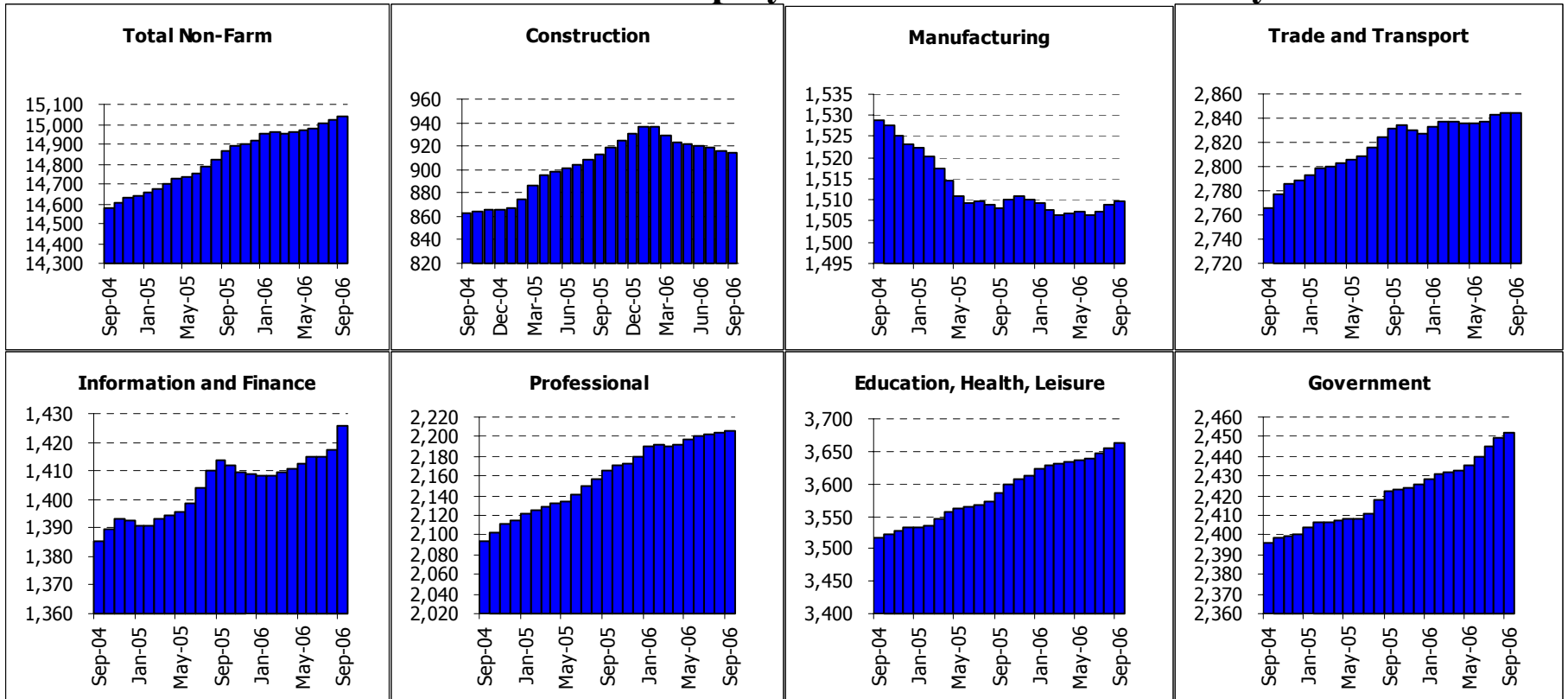
To address these deficiencies in the local data, the UCLA Anderson Forecast will publish seasonally adjusted versions of employment data for the ten major metropolitan economies within California. On the 3rd Friday of each month, when the unadjusted regional data are released by EDD, our economists will compile seasonally adjusted versions of the major components of payroll employment, aggregate employment within both the household and payroll surveys, and unemployment rates. Soon after the EDD data release we will publish a summary table of our seasonally adjusted employment data for each of the covered metropolitan regions, along with summary charts.

The ten economic regions covered at this time will be Los Angeles County, Orange County, San Diego County, the Riverside-San Bernardino (Inland Empire) economic region, Ventura County, Santa Clara County (San Jose MSA), the San Francisco-San Mateo-Marín metro region (San Francisco MSA), the Alameda-Contra Costa (Oakland MSA) region, the Sacramento-Placer-El Dorado area (Sacramento MSA) and Fresno-Madera region (Fresno MSA).

California Overview Payroll Employment

	Current	Monthly Change		Quarterly Change		Year-to-date 2006		Year-to-date 2005	
	Level	Aug-06	Jul-06	Quarterly Change		Year-to-date 2006		Year-to-date 2005	
	Sep-06	Sep-06	Aug-06	Abs.	% AR	Abs.	% AR	Abs.	% AR
California	15039.0	16.2	19.3	57.1	1.5%	121.6	1.1%	221.6	2.0%
Los Angeles	4076.6	7.0	3.4	14.1	1.4%	37.5	1.2%	32.8	1.1%
Orange County	1513.9	3.3	2.6	7.3	2.0%	15.6	1.4%	23.6	2.1%
Riverside	1255.9	0.6	2.4	7.3	2.4%	23.3	2.5%	36.4	4.1%
San Diego	1305.2	2.4	1.2	5.1	1.6%	13.6	1.4%	16.2	1.7%
Ventura	297.7	0.5	0.5	1.5	2.0%	3.5	1.6%	4.7	2.2%
Santa Barbara	173.7	0.2	0.3	1.0	2.3%	1.1	0.9%	3.0	2.4%
Bakersfield	229.6	1.3	0.9	2.9	5.2%	5.2	3.1%	7.8	4.9%
East Bay	1060.5	0.9	0.8	3.7	1.4%	13.7	1.7%	10.6	1.4%
San Francisco	962.9	2.2	2.6	6.6	2.8%	14.3	2.0%	8.7	1.2%
San Jose	880.1	3.9	3.1	9.3	4.3%	9.7	1.5%	5.7	0.9%
Sacramento	901.7	1.4	0.9	3.2	1.4%	7.4	1.1%	18.5	2.9%
Santa Rosa	185.3	-0.8	0.3	-0.6	-1.3%	-3.3	-2.3%	2.5	1.8%
Fresno	292.9	-0.4	0.2	-0.4	-0.5%	-2.1	-0.9%	3.3	1.5%

State of California: Employment Charts and Summary



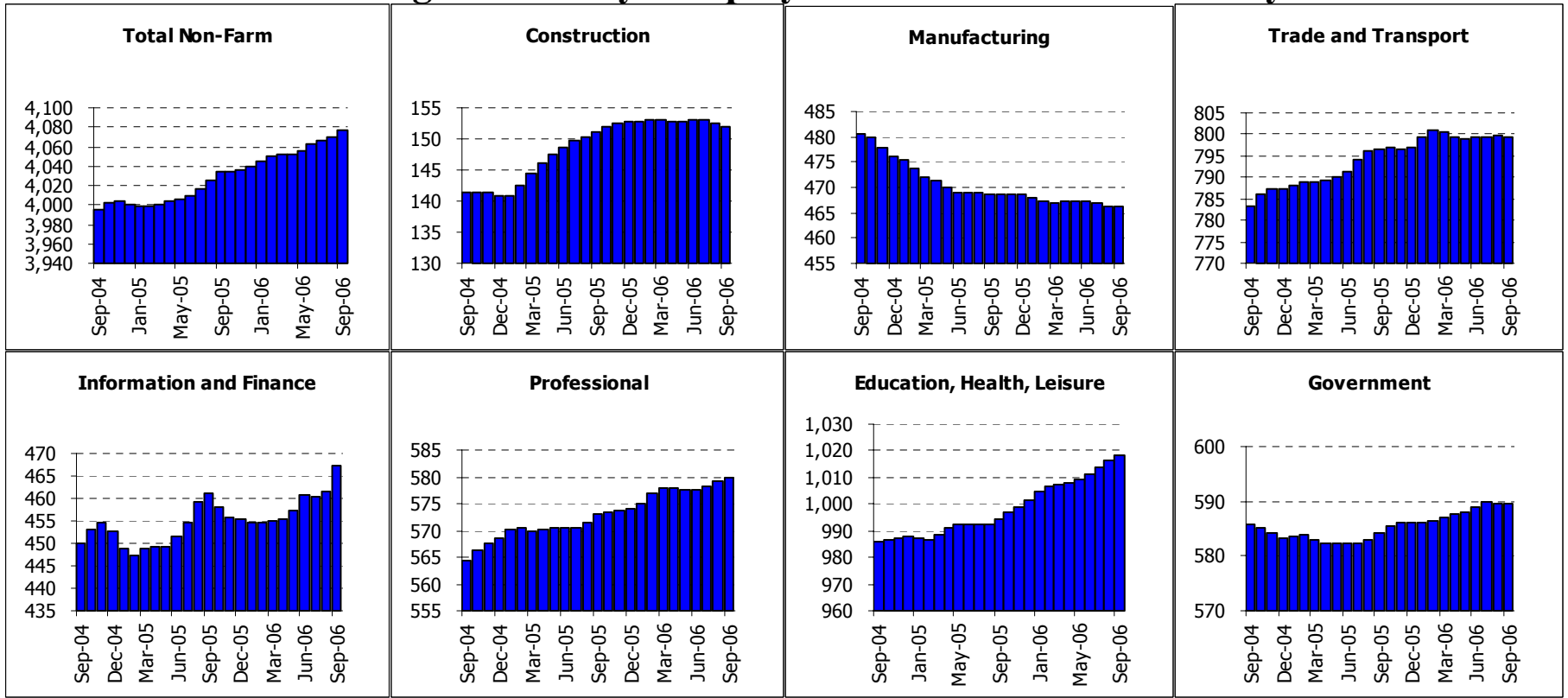
Summary:

State of California: Employment Tables (thousands)

	Current	Monthly Change		Quarterly Change		Year-to-date 2006		Year-to-date 2005	
	Level	Aug-06	Jul-06	Abs.	% AR	Abs.	% AR	Abs.	% AR
Payroll Statistics	Sep-06	Sep-06	Aug-06	Abs.	% AR	Abs.	% AR	Abs.	% AR
Total Non-Farm	15039.0	16.2	19.3	57.1	1.5%	121.6	1.1%	221.6	2.0%
Total Private	12586.6	13.3	15.0	44.5	1.4%	95.2	1.0%	199.6	2.2%
Construction	914.7	-1.6	-1.9	-5.0	-2.2%	-15.9	-2.3%	47.8	7.4%
Durable Manufacturing	959.2	-0.8	-1.0	-2.7	-1.1%	-6.1	-0.8%	-8.3	-1.1%
Non-Durable Manufacturing	550.6	2.0	2.4	6.1	4.6%	6.0	1.5%	-6.6	-1.6%
Wholesale Trade	685.1	1.1	1.2	3.4	2.0%	6.1	1.2%	12.1	2.4%
Retail Trade	1666.5	-0.9	1.2	3.7	0.9%	6.8	0.5%	31.7	2.6%
Transportation and Utilities	492.5	-0.8	0.0	-0.2	-0.2%	3.7	1.0%	-1.3	-0.4%
Information	480.6	6.5	1.4	7.4	6.4%	10.1	2.9%	0.3	0.1%
Financial Activities	944.9	1.7	1.0	3.2	1.4%	6.8	1.0%	20.4	3.0%
Professional Services	986.0	1.7	1.6	5.3	2.2%	17.6	2.4%	33.8	4.9%
Management Companies	222.2	-0.5	-0.3	-0.7	-1.3%	0.9	0.5%	-3.5	-2.1%
Administrative Support	996.9	-0.5	0.2	0.7	0.3%	7.5	1.0%	19.0	2.7%
Education and Healthcare	1620.1	2.3	4.0	10.2	2.6%	23.1	1.9%	18.3	1.6%
Leisure and Hospitality	1520.3	3.8	4.0	11.1	3.0%	22.0	2.0%	26.1	2.4%
Other Services	521.5	-0.3	0.8	1.8	1.4%	5.2	1.3%	8.2	2.2%
Total Government	2452.4	2.9	4.4	12.6	2.1%	26.4	1.5%	22.0	1.2%
Federal Government	248.5	0.0	-0.2	-0.1	-0.2%	0.9	0.5%	-0.9	-0.5%
State and Local Education	1163.8	0.8	2.8	6.5	2.3%	7.6	0.9%	11.6	1.4%
Other State and Local	1040.1	2.1	1.8	6.2	2.4%	18.0	2.4%	11.3	1.5%
Household Statistics									
Labor Force	17802.5	39.5	-26.5	0.7	0.0%	19.8	0.1%	214.6	1.6%
Household Employment	16927.8	36.0	-33.7	-3.0	-0.1%	32.7	0.3%	305.4	2.5%
Unemployment Rate	4.9%	0.01%	0.05%	0.02%		-0.08%		-0.58%	

The California EDD also releases seasonally adjusted data for California. As the EDD uses a different algorithm for this process, their numbers may differ from ours on a month to month basis.

Los Angeles County: Employment Charts and Summary

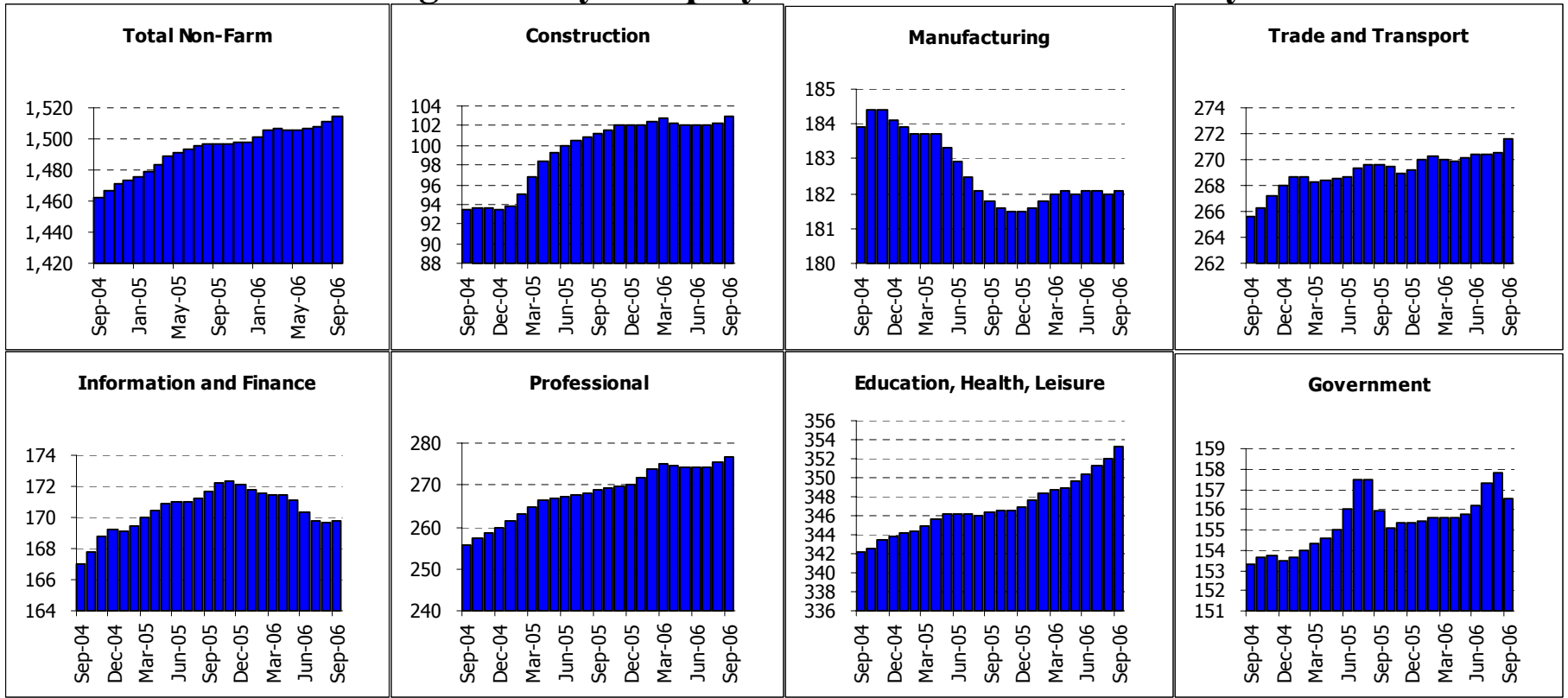


Summary:

Los Angeles County: Employment Tables (thousands)

	Current	Monthly Change		Quarterly Change		Year-to-date 2006		Year-to-date 2005	
	Level	Aug-06	Jul-06	Abs.	% AR	Abs.	% AR	Abs.	% AR
Payroll Statistics	Sep-06	Sep-06	Aug-06	Abs.	% AR	Abs.	% AR	Abs.	% AR
Total Non-Farm	4076.6	7.0	3.4	14.1	1.4%	37.5	1.2%	32.8	1.1%
Total Private	3487.1	7.2	3.6	13.5	1.6%	34.2	1.3%	32.0	1.3%
Construction	151.9	-0.6	-0.6	-1.2	-3.1%	-0.9	-0.8%	10.3	9.9%
Durable Manufacturing	258.2	-1.1	-1.1	-3.1	-4.7%	-3.2	-1.6%	-4.9	-2.5%
Non-Durable Manufacturing	206.7	0.1	0.4	1.3	2.6%	-0.7	-0.4%	-2.6	-1.6%
Wholesale Trade	219.6	-0.4	-0.2	-0.6	-1.1%	0.6	0.4%	2.4	1.5%
Retail Trade	417.1	0.9	0.9	2.5	2.4%	3.2	1.0%	7.4	2.4%
Transportation and Utilities	164.4	-0.5	-0.2	-0.5	-1.2%	2.2	1.8%	-0.6	-0.5%
Information	219.6	5.6	1.0	6.2	12.1%	10.5	6.8%	4.6	2.9%
Financial Activities	247.7	0.1	0.1	0.4	0.6%	1.6	0.9%	3.7	2.0%
Professional Services	258.1	0.6	0.8	2.6	4.1%	7.5	4.0%	6.8	3.7%
Management Companies	70.2	0.0	0.0	-0.2	-1.1%	0.3	0.6%	-0.2	-0.4%
Administrative Support	251.3	-0.6	-0.1	-1.0	-1.6%	-2.2	-1.2%	-2.7	-1.4%
Education and Healthcare	480.9	1.1	1.5	4.4	3.7%	8.2	2.3%	0.8	0.2%
Leisure and Hospitality	388.4	1.0	0.9	2.3	2.4%	7.3	2.6%	4.0	1.4%
Other Services	149.1	-0.2	0.1	0.2	0.5%	1.4	1.3%	1.9	1.8%
Total Government	589.5	-0.1	-0.3	0.6	0.4%	3.3	0.8%	0.8	0.2%
Federal Government	53.2	-0.1	-0.1	-0.2	-1.5%	0.1	0.3%	-0.2	-0.5%
State and Local Education	296.6	-0.3	-0.1	0.6	0.8%	1.0	0.5%	-0.4	-0.2%
Other State and Local	239.7	0.3	0.0	0.3	0.5%	2.3	1.3%	1.5	0.9%
Household Statistics									
Labor Force	4845.9	9.6	-22.2	-43.9	-3.5%	-13.4	-0.4%	40.5	1.1%
Household Employment	4609.2	5.0	-30.9	-55.2	-4.7%	2.1	0.1%	89.4	2.7%
Unemployment Rate	4.9%	0.09%	0.20%	0.27%		-0.31%		-1.06%	

Orange County: Employment Charts and Summary

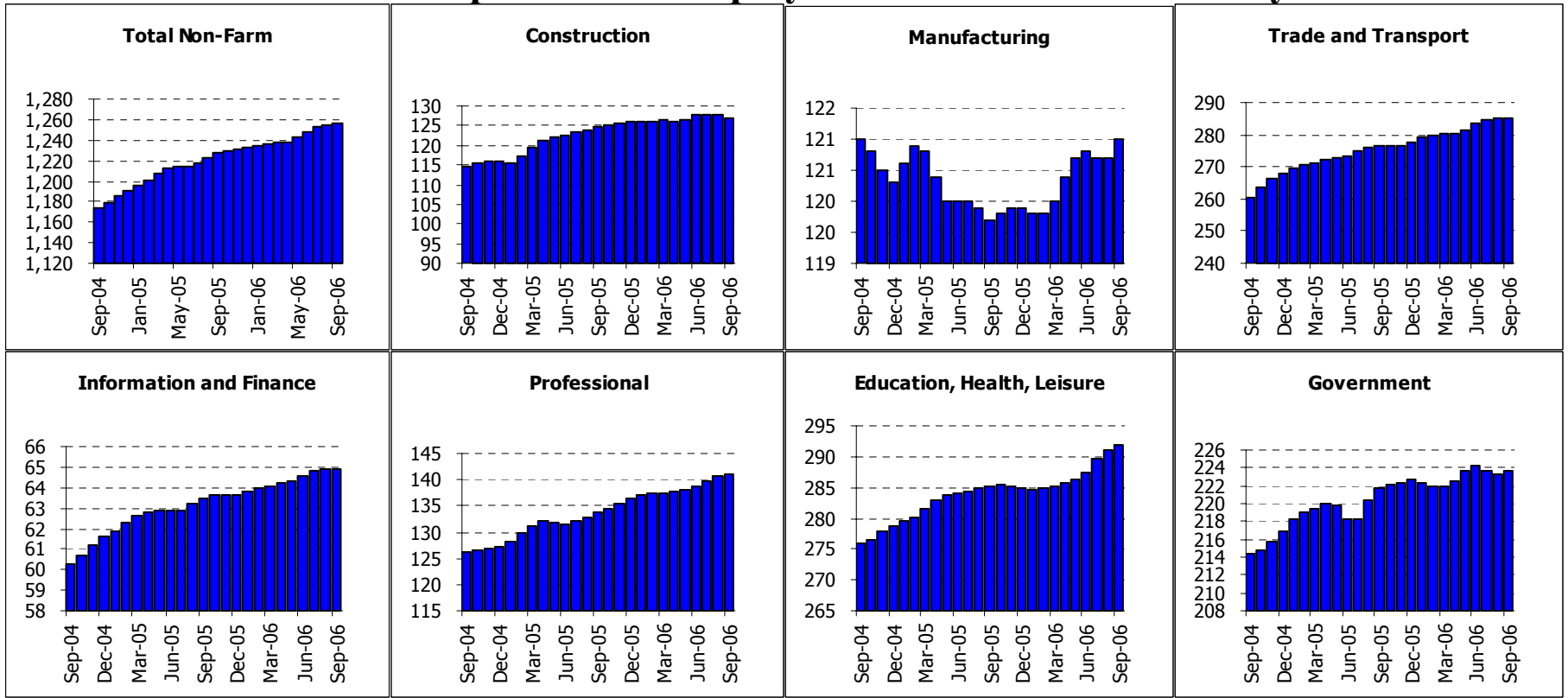


Summary:

Orange County: Employment Tables (thousands)

	Current	Monthly Change		Quarterly Change		Year-to-date 2006		Year-to-date 2005	
	Level	Aug-06	Jul-06	Abs.	% AR	Abs.	% AR	Abs.	% AR
Payroll Statistics	Sep-06	Sep-06	Aug-06	Abs.	% AR	Abs.	% AR	Abs.	% AR
Total Non-Farm	1513.9	3.3	2.6	7.3	2.0%	15.6	1.4%	23.6	2.1%
Total Private	1357.4	4.6	2.1	7.0	2.1%	14.5	1.4%	21.2	2.1%
Construction	103.0	0.7	0.3	1.0	4.0%	0.9	1.2%	7.7	11.1%
Durable Manufacturing	128.5	0.1	0.0	0.1	0.3%	0.9	0.9%	-0.4	-0.4%
Non-Durable Manufacturing	53.1	-0.2	-0.2	-0.5	-3.7%	-0.9	-2.2%	-1.9	-4.5%
Wholesale Trade	83.4	0.3	0.2	0.6	2.9%	0.6	1.0%	-0.4	-0.6%
Retail Trade	159.6	0.6	0.1	0.9	2.3%	2.8	2.4%	2.5	2.1%
Transportation and Utilities	29.1	0.2	0.0	0.1	1.4%	0.2	0.9%	-0.7	-3.2%
Information	31.9	0.1	0.1	0.2	2.5%	-0.5	-2.1%	-0.8	-3.2%
Financial Activities	137.9	0.0	-0.2	-0.7	-2.0%	-1.8	-1.7%	3.3	3.3%
Professional Services	106.3	0.2	0.1	0.4	1.5%	2.9	3.8%	3.5	4.7%
Management Companies	30.3	0.0	-0.1	0.0	0.0%	0.3	1.3%	-0.9	-3.9%
Administrative Support	140.1	1.1	0.7	2.0	5.9%	3.5	3.4%	6.2	6.5%
Education and Healthcare	135.9	0.2	0.3	0.7	2.1%	1.3	1.3%	2.2	2.2%
Leisure and Hospitality	168.4	0.9	0.4	1.8	4.4%	4.4	3.6%	-0.5	-0.4%
Other Services	49.0	0.2	0.1	0.4	3.3%	0.6	1.7%	0.8	2.2%
Total Government	156.5	-1.3	0.5	0.3	0.8%	1.2	1.0%	2.4	2.1%
Federal Government	11.5	0.0	0.0	0.0	0.0%	0.1	1.2%	0.1	1.2%
State and Local Education	92.2	-1.3	0.6	0.3	1.3%	1.0	1.5%	1.8	2.7%
Other State and Local	52.8	0.0	0.0	0.2	1.5%	0.1	0.3%	0.6	1.5%
Household Statistics									
Labor Force	1611.2	3.8	0.1	4.7	1.2%	5.9	0.5%	20.7	1.7%
Household Employment	1556.3	4.2	0.4	5.5	1.4%	7.9	0.7%	24.8	2.2%
Unemployment Rate	3.4%	-0.03%	-0.02%	-0.06%		-0.14%		-0.31%	

Inland Empire MSA: Employment Charts and Summary



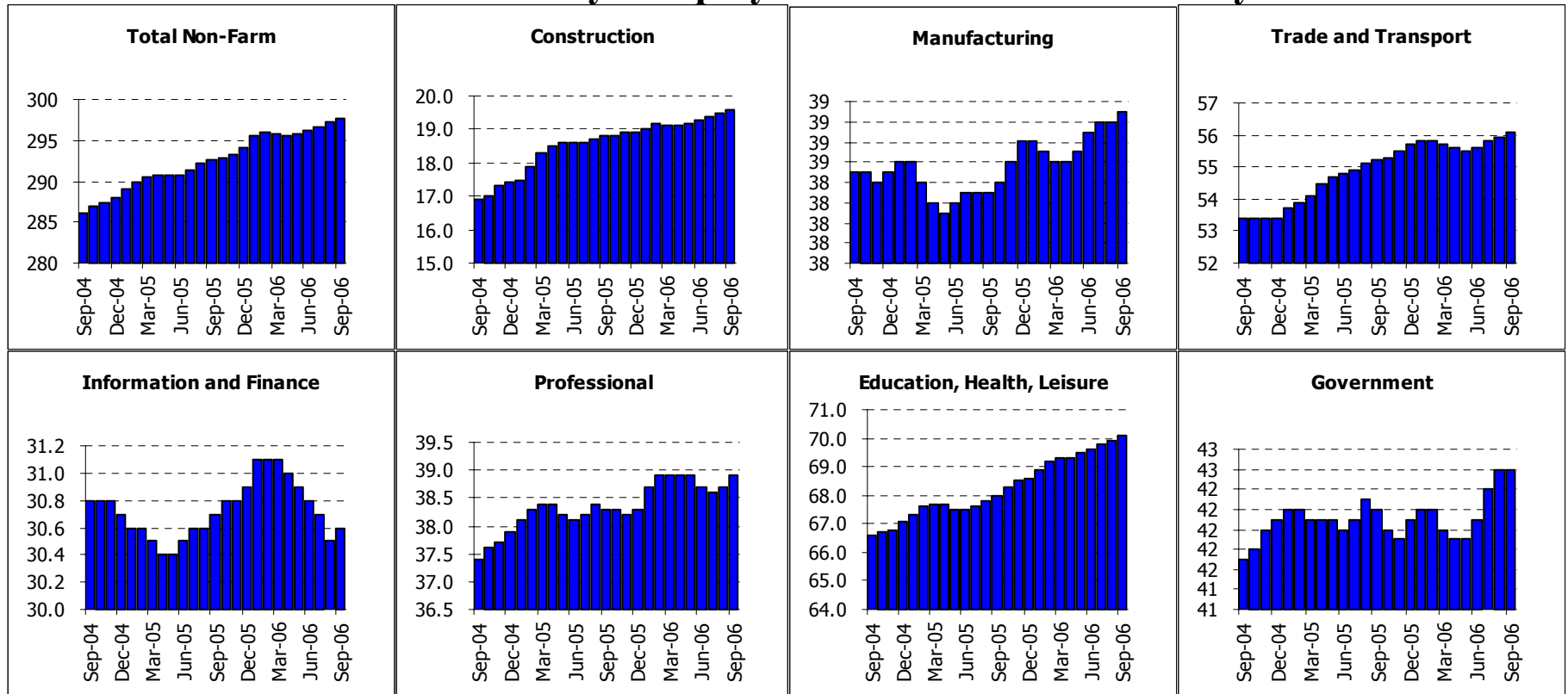
Summary:

Inland Empire MSA: Employment Tables (thousands)

	Current	Monthly Change		Quarterly Change		Year-to-date 2006		Year-to-date 2005	
	Level	Aug-06	Jul-06	Abs.	% AR	Abs.	% AR	Abs.	% AR
Payroll Statistics	Sep-06	Sep-06	Aug-06	Abs.	% AR	Abs.	% AR	Abs.	% AR
Total Non-Farm	1255.9	0.6	2.4	7.3	2.4%	23.3	2.5%	36.4	4.1%
Total Private	1032.2	0.2	2.8	7.9	3.1%	22.3	3.0%	31.6	4.4%
Construction	126.9	-0.8	-0.3	-0.8	-2.5%	0.8	0.8%	8.8	10.3%
Durable Manufacturing	86.3	0.1	0.0	0.1	0.5%	0.7	1.1%	-0.7	-1.1%
Non-Durable Manufacturing	34.4	0.0	0.0	0.0	0.0%	0.0	0.0%	0.1	0.4%
Wholesale Trade	51.2	0.2	0.0	0.1	0.8%	1.0	2.7%	1.2	3.3%
Retail Trade	170.5	-0.4	0.2	0.7	1.7%	4.3	3.5%	5.6	4.7%
Transportation and Utilities	64.0	0.2	0.4	1.3	8.6%	3.5	7.8%	1.4	3.2%
Information	14.6	0.0	0.0	0.1	2.8%	0.3	2.8%	0.0	0.0%
Financial Activities	50.3	0.0	0.1	0.2	1.6%	1.0	2.7%	1.9	5.4%
Professional Services	36.3	0.1	0.0	0.2	2.2%	1.1	4.2%	2.6	10.9%
Management Companies	12.9	0.0	-0.1	-0.1	-3.0%	0.3	3.2%	0.8	9.0%
Administrative Support	91.8	0.3	0.7	2.0	9.2%	3.2	4.8%	3.2	5.2%
Education and Healthcare	122.9	0.5	0.7	2.1	7.1%	2.4	2.7%	1.5	1.7%
Leisure and Hospitality	126.7	0.3	0.8	2.1	6.9%	4.0	4.4%	3.6	4.0%
Other Services	42.3	-0.1	0.0	0.2	1.9%	0.7	2.2%	1.4	4.7%
Total Government	223.7	0.4	-0.3	-0.5	-0.9%	1.0	0.6%	4.8	3.0%
Federal Government	18.7	0.0	0.1	0.1	2.2%	0.0	0.0%	1.0	7.6%
State and Local Education	107.8	0.2	-0.6	-1.4	-5.0%	-2.2	-2.7%	-0.2	-0.2%
Other State and Local	97.2	0.3	0.3	0.9	3.8%	3.4	4.9%	4.1	6.1%
Household Statistics									
Labor Force	1743.1	0.3	2.1	12.7	3.0%	19.2	1.5%	41.6	3.3%
Household Employment	1662.7	-0.2	2.2	12.8	3.1%	19.0	1.5%	47.1	4.0%
Unemployment Rate	4.6%	0.03%	-0.01%	-0.04%		-0.04%		-0.45%	

The Inland Empire is made up of Riverside and San Bernardino counties

Ventura County: Employment Charts and Summary

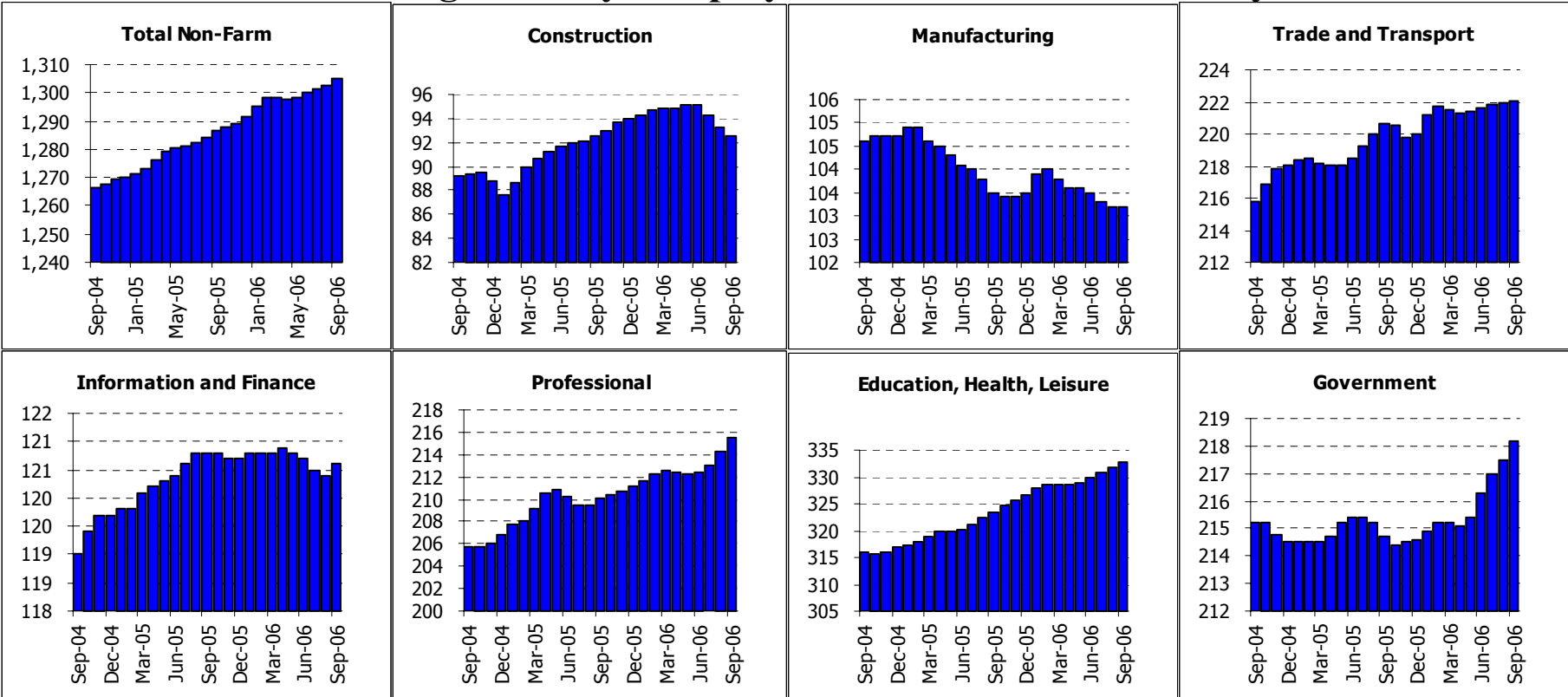


Summary:

Ventura County: Employment Tables (thousands)

	Current	Monthly Change		Quarterly Change		Year-to-date 2006		Year-to-date 2005	
	Level	Aug-06	Jul-06	Abs.	% AR	Abs.	% AR	Abs.	% AR
Payroll Statistics	Sep-06	Sep-06	Aug-06	Abs.	% AR	Abs.	% AR	Abs.	% AR
Total Non-Farm	297.7	0.5	0.5	1.5	2.0%	3.5	1.6%	4.7	2.2%
Total Private	255.1	0.5	0.3	1.1	1.7%	3.0	1.6%	4.6	2.5%
Construction	19.6	0.1	0.1	0.3	6.4%	0.7	5.0%	1.4	10.9%
Durable Manufacturing	24.3	0.1	0.0	0.1	1.7%	-0.2	-1.1%	0.1	0.5%
Non-Durable Manufacturing	14.7	0.0	0.0	0.1	2.8%	0.5	4.7%	-0.2	-1.9%
Wholesale Trade	13.0	0.1	0.1	0.2	6.4%	0.3	3.2%	0.1	1.1%
Retail Trade	37.2	0.1	0.1	0.3	3.3%	0.3	1.1%	1.5	5.7%
Transportation and Utilities	6.0	0.0	0.1	0.1	7.0%	0.1	2.3%	0.1	2.3%
Information	6.1	0.1	-0.1	0.0	0.0%	0.0	0.0%	-0.2	-4.2%
Financial Activities	24.5	0.0	-0.1	-0.2	-3.2%	-0.3	-1.6%	0.2	1.1%
Professional Services	15.7	0.1	0.1	0.2	5.3%	0.7	6.3%	0.5	4.6%
Management Companies	3.6	0.0	0.0	0.0	0.0%	0.0	0.0%	0.0	0.0%
Administrative Support	19.6	0.1	0.0	0.0	0.0%	0.0	0.0%	-0.1	-0.7%
Education and Healthcare	29.5	0.1	0.1	0.3	4.2%	0.4	1.8%	0.9	4.3%
Leisure and Hospitality	29.9	0.0	0.0	0.0	0.0%	0.8	3.7%	-0.1	-0.5%
Other Services	10.7	0.1	0.0	0.2	7.8%	0.3	3.9%	0.1	1.3%
Total Government	42.6	0.0	0.2	0.5	4.8%	0.5	1.6%	0.1	0.3%
Federal Government	7.2	0.0	-0.1	0.0	0.0%	-0.1	-1.8%	-0.2	-3.5%
State and Local Education	18.8	0.3	0.1	0.6	13.9%	0.5	3.7%	-0.5	-3.5%
Other State and Local	16.6	-0.1	0.1	0.1	2.4%	0.2	1.6%	0.3	2.5%
Household Statistics									
Labor Force	424.1	1.1	0.4	2.0	1.9%	1.7	0.5%	6.0	1.9%
Household Employment	406.6	1.5	0.7	3.0	3.0%	2.3	0.8%	7.7	2.6%
Unemployment Rate	4.1%	-0.11%	-0.07%	-0.26%		-0.16%		-0.47%	

San Diego County: Employment Charts and Summary

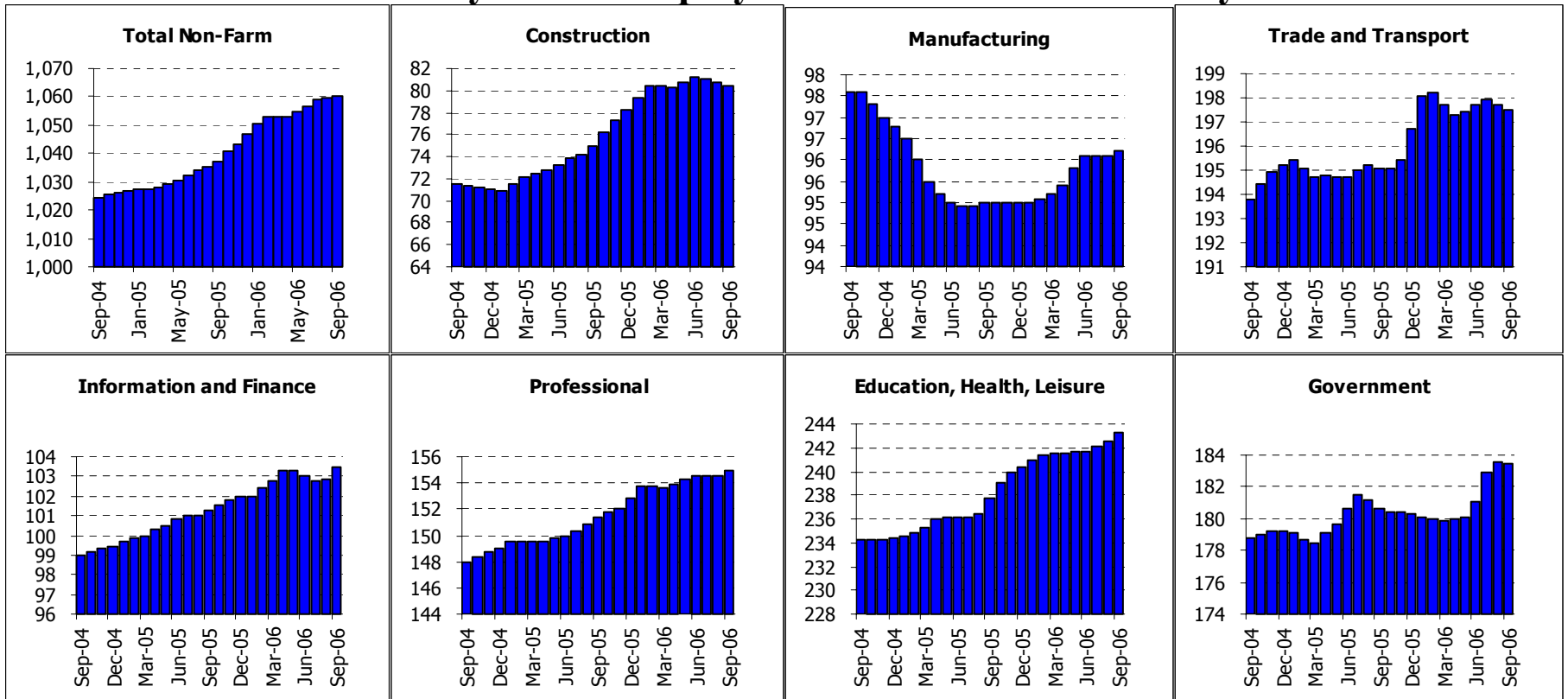


Summary:

San Diego County: Employment Tables (thousands)

	Current	Monthly Change		Quarterly Change		Year-to-date 2006		Year-to-date 2005	
	Level	Aug-06	Jul-06	Abs.	% AR	Abs.	% AR	Abs.	% AR
Payroll Statistics	Sep-06	Sep-06	Aug-06	Abs.	% AR	Abs.	% AR	Abs.	% AR
Total Non-Farm	1305.2	2.4	1.2	5.1	1.6%	13.6	1.4%	16.2	1.7%
Total Private	1087.0	1.7	0.8	3.2	1.2%	10.1	1.3%	16.0	2.0%
Construction	92.5	-0.7	-1.1	-2.7	-10.9%	-1.5	-2.1%	3.7	5.6%
Durable Manufacturing	77.8	-0.2	-0.2	-0.5	-2.5%	-0.3	-0.5%	-1.0	-1.7%
Non-Durable Manufacturing	25.1	0.0	0.1	0.1	1.6%	-0.4	-2.1%	-0.2	-1.0%
Wholesale Trade	45.6	0.2	0.1	0.3	2.7%	0.8	2.4%	1.8	5.7%
Retail Trade	147.9	0.0	0.0	0.3	0.8%	1.9	1.7%	0.9	0.8%
Transportation and Utilities	29.0	0.0	0.1	0.2	2.8%	0.4	1.9%	-0.3	-1.4%
Information	37.0	0.1	0.0	0.0	0.0%	0.1	0.4%	0.0	0.0%
Financial Activities	83.6	0.1	-0.1	-0.1	-0.5%	-0.2	-0.3%	1.1	1.8%
Professional Services	107.8	0.4	0.4	1.3	5.0%	2.1	2.7%	4.2	5.6%
Management Companies	17.9	0.0	0.0	0.0	0.0%	0.2	1.5%	0.0	0.0%
Administrative Support	89.7	0.6	0.5	1.5	7.0%	1.9	2.9%	-1.2	-1.8%
Education and Healthcare	126.5	0.1	0.4	1.0	3.2%	2.2	2.4%	1.7	1.9%
Leisure and Hospitality	156.1	0.5	0.3	1.1	2.9%	2.5	2.2%	5.3	4.9%
Other Services	50.1	0.4	0.2	0.8	6.7%	1.3	3.6%	-0.3	-0.8%
Total Government	218.2	0.7	0.5	1.9	3.6%	3.6	2.2%	0.2	0.1%
Federal Government	39.5	0.2	0.0	0.3	3.1%	0.5	1.7%	-0.3	-1.0%
State and Local Education	100.1	0.5	0.2	1.3	5.4%	1.9	2.6%	0.8	1.1%
Other State and Local	78.6	0.2	0.1	0.5	2.6%	1.3	2.2%	-0.4	-0.7%
Household Statistics									
Labor Force	1516.9	5.1	-1.3	4.4	1.2%	6.4	0.6%	17.4	1.6%
Household Employment	1456.8	3.0	-0.2	4.1	1.1%	7.7	0.7%	21.4	2.0%
Unemployment Rate	4.0%	0.13%	-0.07%	0.01%		-0.10%		-0.32%	

East Bay MSA: Employment Charts and Summary



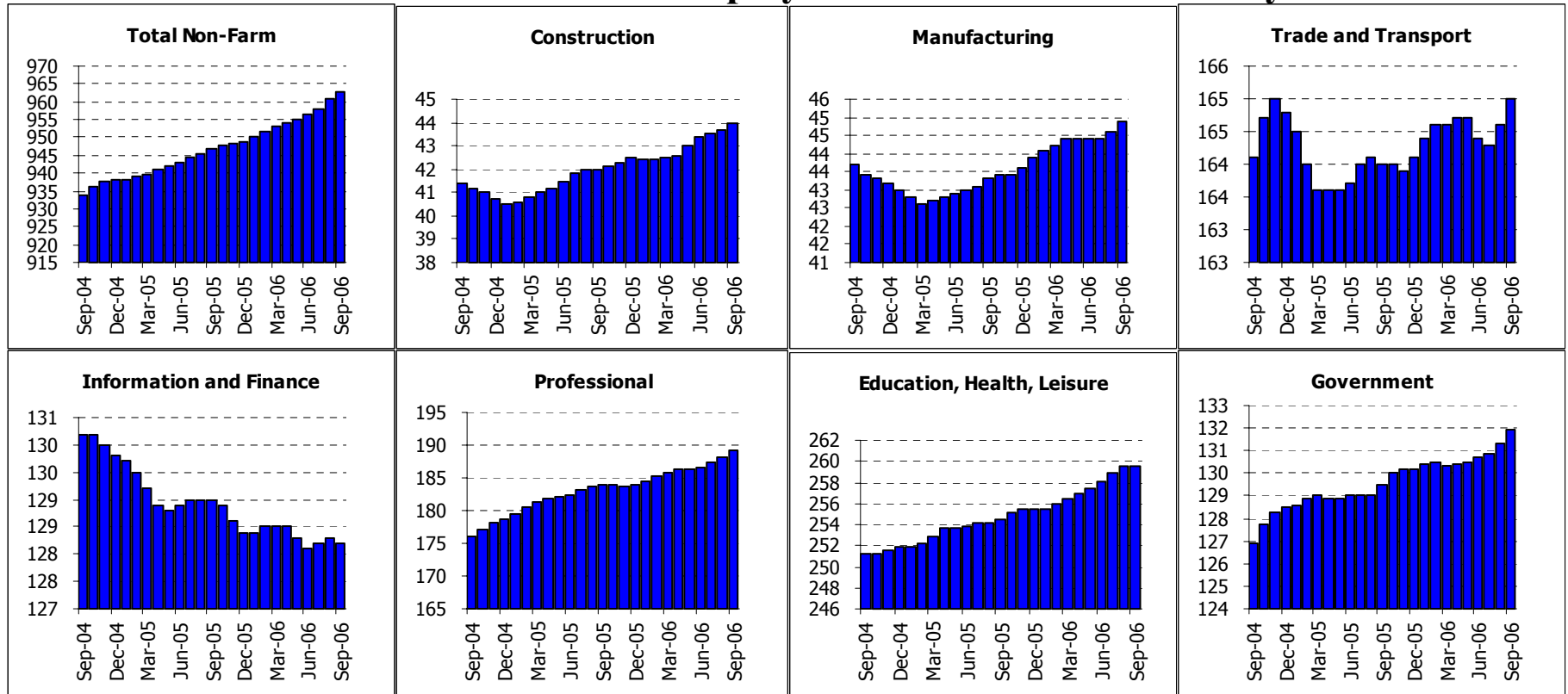
Summary:

East Bay MSA: Employment Tables (thousands)

	Current	Monthly Change		Quarterly Change		Year-to-date 2006		Year-to-date 2005	
	Level	Aug-06	Jul-06	Abs.	% AR	Abs.	% AR	Abs.	% AR
Payroll Statistics	Sep-06	Sep-06	Aug-06	Abs.	% AR	Abs.	% AR	Abs.	% AR
Total Non-Farm	1060.5	0.9	0.8	3.7	1.4%	13.7	1.7%	10.6	1.4%
Total Private	877.0	1.0	0.1	1.3	0.6%	10.5	1.6%	9.2	1.5%
Construction	80.4	-0.3	-0.4	-0.8	-3.9%	2.1	3.6%	3.9	7.4%
Durable Manufacturing	60.0	-0.1	-0.1	-0.3	-2.0%	0.2	0.4%	-1.4	-3.0%
Non-Durable Manufacturing	36.0	0.1	0.1	0.3	3.4%	0.8	3.0%	-0.7	-2.6%
Wholesale Trade	48.4	0.0	0.0	0.0	0.0%	0.3	0.8%	-1.3	-3.5%
Retail Trade	115.0	0.0	-0.1	0.1	0.3%	1.3	1.5%	1.4	1.7%
Transportation and Utilities	34.5	0.0	-0.1	0.0	0.0%	0.1	0.4%	-0.2	-0.8%
Information	29.6	0.1	0.0	0.0	0.0%	-0.2	-0.9%	-0.6	-2.6%
Financial Activities	73.9	0.5	0.1	0.5	2.8%	1.7	3.2%	2.5	4.9%
Professional Services	73.3	0.2	0.2	0.5	2.8%	0.8	1.5%	1.2	2.3%
Management Companies	22.1	0.0	0.0	0.0	0.0%	0.8	5.0%	-0.7	-4.2%
Administrative Support	59.4	0.0	-0.3	-0.3	-2.0%	0.4	0.9%	1.8	4.3%
Education and Healthcare	122.5	0.2	0.3	1.0	3.3%	2.2	2.4%	1.9	2.2%
Leisure and Hospitality	85.4	0.6	0.2	0.7	3.3%	1.2	1.9%	1.4	2.3%
Other Services	35.4	0.0	-0.1	-0.1	-1.1%	-0.5	-1.9%	0.0	0.0%
Total Government	183.5	-0.1	0.7	2.4	5.4%	3.2	2.4%	1.4	1.0%
Federal Government	17.4	0.0	0.0	0.1	2.3%	0.0	0.0%	0.2	1.6%
State and Local Education	88.4	0.0	0.5	1.9	9.1%	3.0	4.7%	1.4	2.2%
Other State and Local	77.7	0.0	0.2	0.6	3.1%	0.4	0.7%	-0.2	-0.3%
Household Statistics									
Labor Force	1273.0	3.9	-1.0	3.8	1.2%	6.4	0.7%	8.9	0.9%
Household Employment	1218.1	4.0	-0.9	4.4	1.5%	10.2	1.1%	14.1	1.6%
Unemployment Rate	4.3%	-0.02%	0.00%	-0.06%		-0.32%		-0.45%	

East Bay is also known as the Oakland MSA. It is made up of Alameda and Contra Costa counties.

San Francisco MSA: Employment Charts and Summary



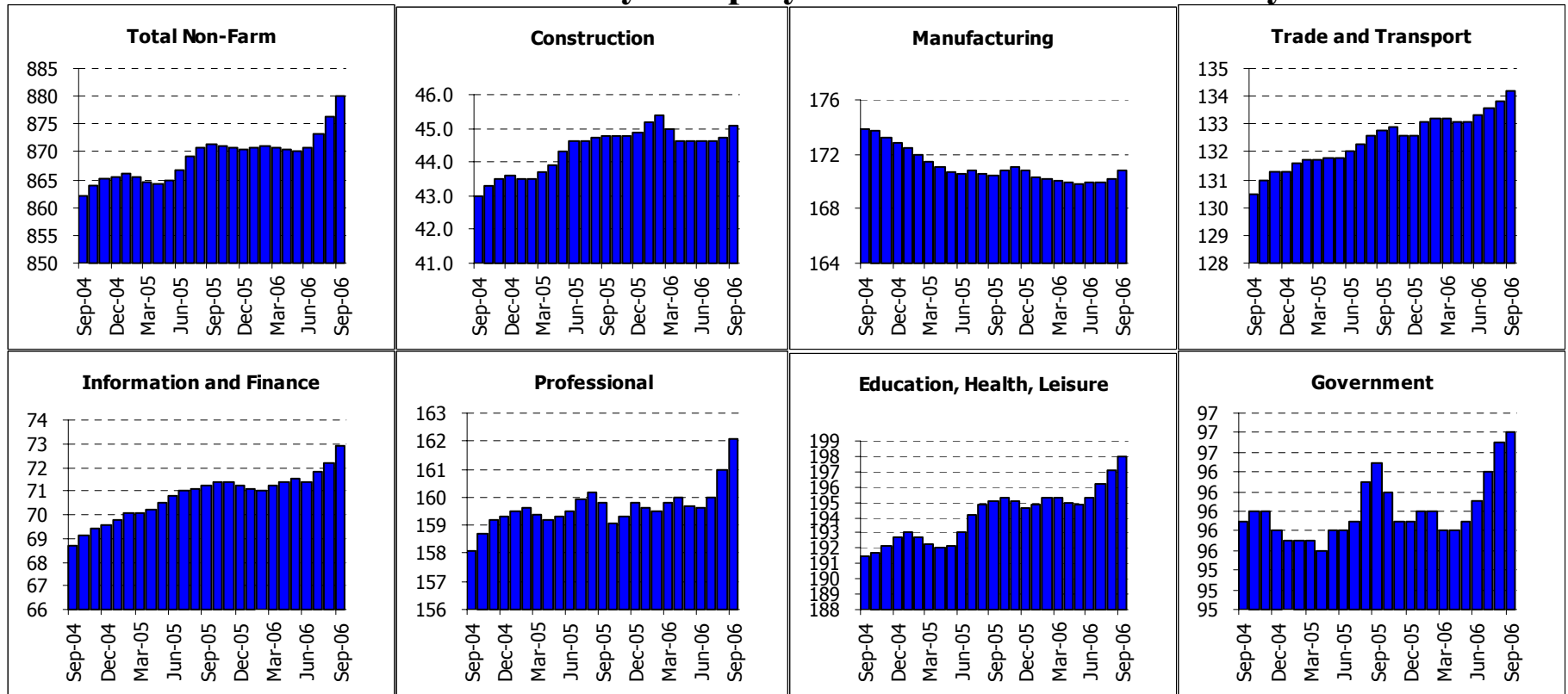
Summary:

San Francisco MSA: Employment Tables (thousands)

	Current	Monthly Change		Quarterly Change		Year-to-date 2006		Year-to-date 2005	
	Level	Aug-06	Jul-06	Abs.	% AR	Abs.	% AR	Abs.	% AR
Payroll Statistics	Sep-06	Sep-06	Aug-06	Abs.	% AR	Abs.	% AR	Abs.	% AR
Total Non-Farm	962.9	2.2	2.6	6.6	2.8%	14.3	2.0%	8.7	1.2%
Total Private	831.0	1.6	2.3	5.4	2.6%	12.6	2.1%	7.6	1.3%
Construction	44.0	0.3	0.2	0.6	5.6%	1.5	4.7%	1.3	4.3%
Durable Manufacturing	21.3	0.0	0.0	0.0	0.0%	0.2	1.3%	-0.3	-1.9%
Non-Durable Manufacturing	23.5	0.2	0.2	0.5	9.0%	1.1	6.6%	0.4	2.4%
Wholesale Trade	26.8	0.1	0.1	0.2	3.0%	0.3	1.5%	0.1	0.5%
Retail Trade	96.1	0.3	0.2	0.8	3.4%	1.8	2.6%	0.6	0.9%
Transportation and Utilities	42.4	0.0	0.1	-0.2	-1.9%	-0.5	-1.6%	-1.5	-4.4%
Information	39.0	-0.1	-0.1	-0.3	-3.0%	-1.2	-4.0%	-1.8	-5.6%
Financial Activities	89.2	0.0	0.2	0.4	1.8%	1.0	1.5%	1.0	1.5%
Professional Services	111.1	0.5	0.5	1.3	4.8%	3.3	4.1%	3.7	4.8%
Management Companies	19.8	0.0	0.0	0.1	2.0%	-0.2	-1.3%	-0.7	-4.4%
Administrative Support	58.1	0.2	0.3	0.8	5.7%	1.9	4.5%	2.0	5.0%
Education and Healthcare	102.9	0.0	0.3	0.9	3.6%	1.4	1.8%	1.3	1.7%
Leisure and Hospitality	118.6	0.1	0.2	0.4	1.4%	2.1	2.4%	1.0	1.2%
Other Services	38.1	0.0	0.1	0.2	2.1%	0.7	2.5%	0.3	1.1%
Total Government	131.9	0.6	0.4	1.2	3.7%	1.7	1.7%	1.0	1.0%
Federal Government	20.3	0.0	0.0	0.1	2.0%	-0.1	-0.7%	-0.5	-3.2%
State and Local Education	49.9	0.6	0.3	0.9	7.6%	0.7	1.9%	0.7	1.9%
Other State and Local	61.7	0.2	0.0	0.4	2.6%	1.1	2.4%	0.9	2.0%
Household Statistics									
Labor Force	919.8	3.9	0.0	4.6	2.0%	5.6	0.8%	4.4	0.6%
Household Employment	884.3	4.5	0.2	5.6	2.6%	9.3	1.4%	9.1	1.4%
Unemployment Rate	3.9%	-0.08%	-0.02%	-0.13%		-0.43%		-0.54%	

The San Francisco MSA includes Marin, San Francisco and San Mateo counties

Santa Clara County: Employment Charts and Summary



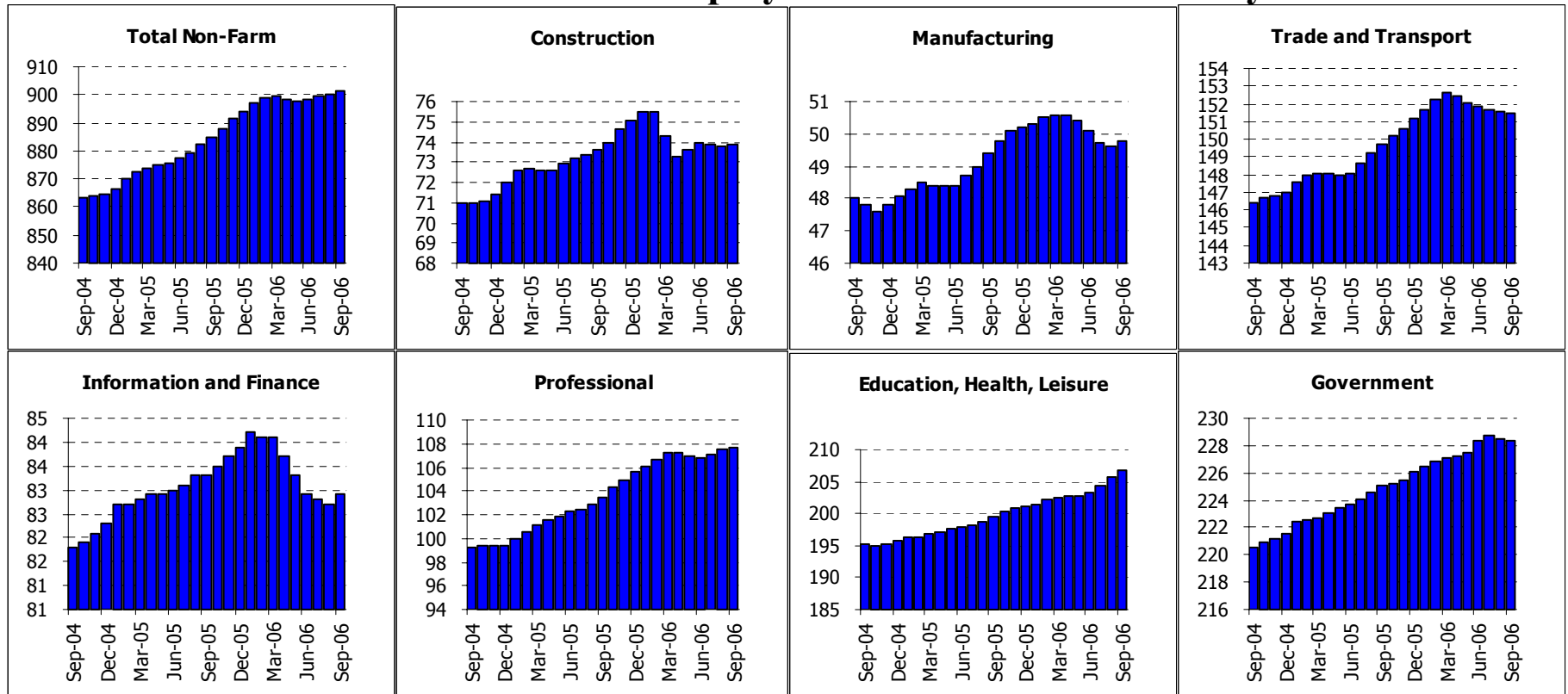
Summary:

Santa Clara County: Employment Tables (thousands)

	Current	Monthly Change		Quarterly Change		Year-to-date 2006		Year-to-date 2005	
	Level	Aug-06	Jul-06	Abs.	% AR	Abs.	% AR	Abs.	% AR
Payroll Statistics	Sep-06	Sep-06	Aug-06	Abs.	% AR	Abs.	% AR	Abs.	% AR
Total Non-Farm	880.1	3.9	3.1	9.3	4.3%	9.7	1.5%	5.7	0.9%
Total Private	783.3	3.8	2.9	8.6	4.5%	8.9	1.5%	5.1	0.9%
Construction	45.1	0.4	0.1	0.5	4.6%	0.2	0.6%	1.2	3.7%
Durable Manufacturing	158.6	0.5	0.4	1.2	3.1%	0.4	0.3%	-2.8	-2.3%
Non-Durable Manufacturing	11.8	-0.1	-0.2	-0.5	-15.3%	-0.8	-8.4%	0.5	5.7%
Wholesale Trade	37.5	0.2	0.2	0.5	5.5%	1.1	4.0%	0.8	3.1%
Retail Trade	84.4	0.2	0.2	0.6	2.9%	1.6	2.6%	0.7	1.1%
Transportation and Utilities	12.6	0.0	0.0	0.0	0.0%	-0.5	-5.1%	-0.1	-1.0%
Information	36.1	0.3	0.2	0.8	9.4%	1.1	4.2%	1.3	5.2%
Financial Activities	36.8	0.4	0.2	0.7	8.0%	0.6	2.2%	0.3	1.1%
Professional Services	101.8	0.3	0.2	0.7	2.8%	1.9	2.5%	1.8	2.5%
Management Companies	8.2	0.1	0.0	0.1	5.0%	0.2	3.3%	-0.2	-3.1%
Administrative Support	52.0	0.6	0.6	1.5	12.4%	0.1	0.3%	-1.3	-3.3%
Education and Healthcare	97.9	0.2	0.4	1.2	5.1%	1.1	1.5%	1.2	1.7%
Leisure and Hospitality	74.8	0.6	0.3	1.1	6.1%	2.0	3.7%	1.0	1.9%
Other Services	25.3	0.1	0.2	0.4	6.6%	0.3	1.6%	0.2	1.1%
Total Government	96.8	0.1	0.3	0.7	2.9%	0.9	1.3%	0.7	1.0%
Federal Government	11.0	0.0	0.0	0.0	0.0%	-0.1	-1.2%	-0.2	-2.3%
State and Local Education	46.5	0.0	0.1	0.4	3.5%	0.4	1.2%	0.9	2.6%
Other State and Local	39.3	0.2	0.2	0.4	4.2%	0.7	2.4%	0.0	0.0%
Household Statistics									
Labor Force	848.1	3.3	1.9	7.0	3.4%	1.6	0.3%	2.9	0.5%
Household Employment	808.6	3.4	1.9	7.0	3.5%	5.2	0.9%	8.9	1.5%
Unemployment Rate	4.7%	-0.03%	-0.01%	-0.04%		-0.43%		-0.72%	

The San Jose MSA is Santa Clara and San Benito counties.

Sacramento MSA: Employment Charts and Summary



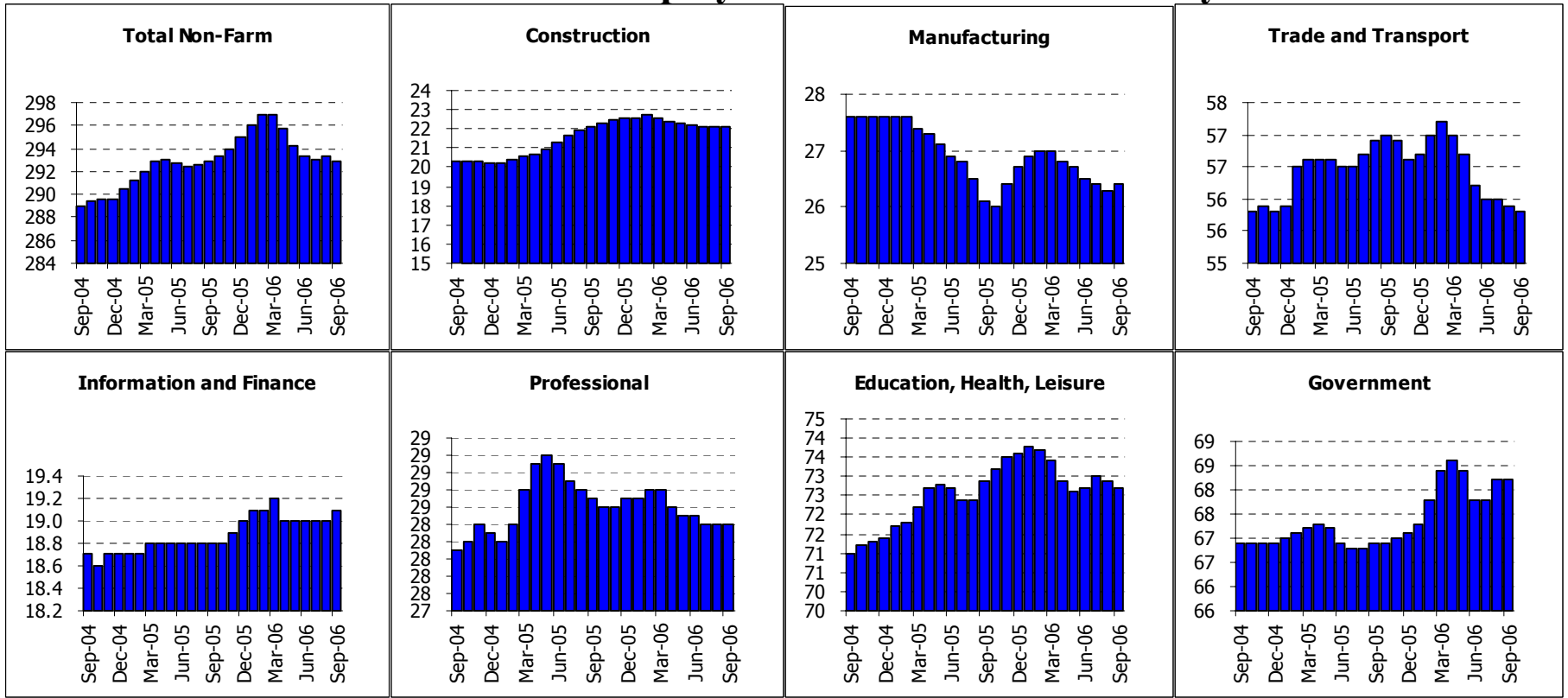
Summary:

Sacramento MSA: Employment Tables (thousands)

	Current	Monthly Change		Quarterly Change		Year-to-date 2006		Year-to-date 2005	
	Level	Aug-06	Jul-06	Abs.	% AR	Abs.	% AR	Abs.	% AR
Payroll Statistics	Sep-06	Sep-06	Aug-06	Abs.	% AR	Abs.	% AR	Abs.	% AR
Total Non-Farm	901.7	1.4	0.9	3.2	1.4%	7.4	1.1%	18.5	2.9%
Total Private	673.3	1.5	1.2	3.1	1.9%	5.2	1.0%	15.1	3.1%
Construction	73.9	0.1	-0.1	-0.1	-0.5%	-1.2	-2.1%	2.2	4.1%
Durable Manufacturing	36.1	0.0	0.0	-0.2	-2.2%	-0.2	-0.7%	1.3	5.1%
Non-Durable Manufacturing	13.6	0.1	0.0	-0.1	-2.9%	-0.3	-2.9%	0.4	4.0%
Wholesale Trade	27.3	0.0	-0.1	-0.1	-1.5%	0.2	1.0%	0.4	2.0%
Retail Trade	100.9	0.0	0.0	0.0	0.0%	0.9	1.2%	2.1	2.9%
Transportation and Utilities	23.6	0.0	0.0	0.0	0.0%	-0.1	-0.6%	0.2	1.2%
Information	19.3	0.1	0.1	0.3	6.5%	-0.3	-2.0%	-0.9	-5.8%
Financial Activities	63.6	0.1	-0.2	-0.3	-1.9%	-0.7	-1.4%	1.9	4.1%
Professional Services	47.2	0.2	0.1	0.5	4.4%	1.1	3.2%	2.1	6.4%
Management Companies	9.3	0.0	0.0	0.1	4.4%	0.1	1.5%	-0.2	-2.9%
Administrative Support	51.1	-0.1	0.1	0.1	0.8%	0.8	2.1%	2.2	6.4%
Education and Healthcare	89.6	0.4	0.5	1.3	6.0%	1.6	2.4%	1.6	2.5%
Leisure and Hospitality	88.2	0.6	0.5	1.6	7.6%	4.0	6.4%	2.0	3.3%
Other Services	29.0	0.2	0.2	0.5	7.2%	0.0	0.0%	0.0	0.0%
Total Government	228.4	-0.1	-0.2	0.1	0.2%	2.3	1.4%	3.5	2.1%
Federal Government	12.7	0.0	0.0	0.0	0.0%	0.0	0.0%	0.3	3.2%
State and Local Education	90.2	-0.2	-0.5	-0.7	-3.0%	-0.2	-0.3%	1.1	1.7%
Other State and Local	125.5	0.2	0.3	0.9	2.9%	2.6	2.8%	2.1	2.3%
Household Statistics									
Labor Force	1033.8	1.4	-1.2	0.9	0.3%	2.0	0.3%	18.2	2.4%
Household Employment	988.1	1.6	-0.9	1.7	0.7%	1.7	0.2%	21.7	3.0%
Unemployment Rate	4.4%	-0.03%	-0.02%	-0.08%		0.02%		-0.43%	

The Sacramento MSA is made up of El Dorado, Placer, Yolo & Sacramento counties

Fresno MSA: Employment Charts and Summary



Summary:

Fresno MSA: Employment Tables (thousands)

	Current	Monthly Change		Quarterly Change		Year-to-date 2006		Year-to-date 2005	
	Level	Aug-06	Jul-06	Abs.	% AR	Abs.	% AR	Abs.	% AR
Payroll Statistics	Sep-06	Sep-06	Aug-06	Abs.	% AR	Abs.	% AR	Abs.	% AR
Total Non-Farm	292.9	-0.4	0.2	-0.4	-0.5%	-2.1	-0.9%	3.3	1.5%
Total Private	224.7	-0.3	-0.3	-0.7	-1.2%	-3.1	-1.8%	3.2	1.9%
Construction	22.1	0.0	0.0	-0.1	-1.8%	-0.5	-2.9%	1.9	12.7%
Durable Manufacturing	10.6	0.0	0.0	0.0	0.0%	0.2	2.6%	0.0	0.0%
Non-Durable Manufacturing	15.7	0.0	-0.1	-0.2	-4.9%	-0.6	-4.9%	-1.5	-11.5%
Wholesale Trade	12.6	0.0	0.1	0.1	3.2%	-0.2	-2.1%	0.2	2.2%
Retail Trade	34.0	-0.1	-0.1	-0.2	-2.3%	-0.1	-0.4%	0.8	3.1%
Transportation and Utilities	9.3	0.0	0.0	0.0	0.0%	-0.2	-2.8%	-0.1	-1.4%
Information	4.5	0.0	0.0	0.0	0.0%	0.1	3.0%	-0.1	-3.0%
Financial Activities	14.6	0.1	0.0	0.1	2.8%	0.0	0.0%	0.2	1.9%
Professional Services	10.6	0.0	0.0	0.0	0.0%	0.0	0.0%	0.7	9.3%
Management Companies	2.9	0.0	0.0	0.0	0.0%	0.0	0.0%	-0.5	-19.1%
Administrative Support	14.9	0.0	0.0	-0.1	-2.6%	-0.3	-2.6%	0.3	2.7%
Education and Healthcare	36.8	-0.1	0.0	0.0	0.0%	0.0	0.0%	0.6	2.2%
Leisure and Hospitality	25.4	0.0	0.0	0.1	1.6%	-0.5	-2.6%	0.7	3.8%
Other Services	10.5	-0.1	-0.1	-0.1	-3.7%	-0.4	-4.9%	0.2	2.6%
Total Government	68.2	0.0	0.4	0.4	2.4%	1.1	2.2%	0.0	0.0%
Federal Government	9.6	0.0	-0.2	-0.6	-21.5%	0.2	2.8%	-0.7	-9.0%
State and Local Education	33.3	-0.1	0.5	0.7	8.9%	0.4	1.6%	0.0	0.0%
Other State and Local	25.3	0.2	0.1	0.4	6.6%	0.6	3.3%	0.7	4.0%
Household Statistics									
Labor Force	400.0	-0.8	-2.1	-3.8	-3.7%	-8.9	-2.9%	2.4	0.8%
Household Employment	363.5	-2.3	-2.8	-5.9	-6.2%	-13.5	-4.7%	3.2	1.2%
Unemployment Rate	9.1%	0.39%	0.22%	0.61%		1.32%		-0.25%	

The Fresno MSA is made up of Fresno County only now.